

Golf Cart Sand Bottle

We are striving to build a reliable brand of golf carts parts and accessories.

Hope this manual can assist you to easier install.

For more technical support, please reach us via

Website : www.10101.com

Email : sale_service@10101.com

Facebook : zhong zaiyang

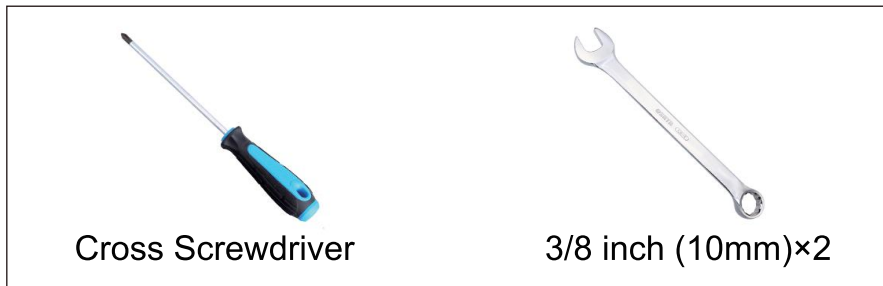
Youtube : 10L0L

Contents	Qty	Installation Tools	Qty
Sand Bottle.....	1	Cross Screwdriver.....	1
U-bracket.....	2	10 mm Hex Wrench.....	2
Long Screw.....	2		
Short Screw.....	2		
Iron Plate.....	2		
Nut.....	2		
Gasket.....	4		

See Figure 1



Installation Tools



Cross Screwdriver

3/8 inch (10mm)×2

Installation Steps

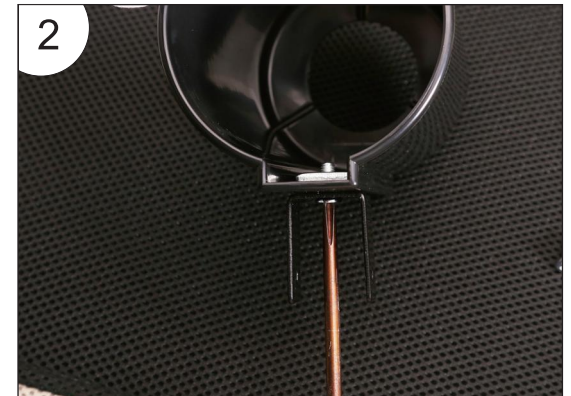
1. Take out the short screw, iron sheet and U-bracket.

See figure 1



2. Tighten with a cross screwdriver.

See figure 2



3. As shown in the figure.

See figure 3



4. Select an appropriate position.

See figure 4



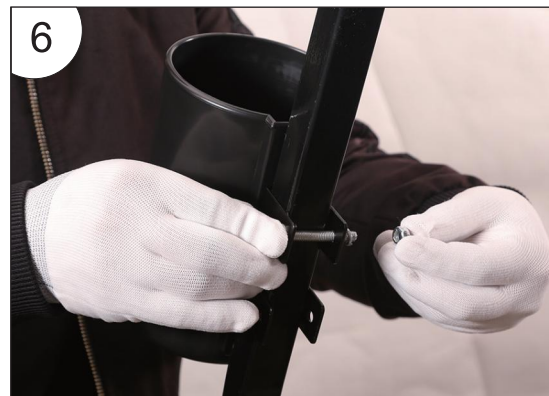
5. Take out the long screw, shim and nut.

See figure 5



6. Assemble the long screw through the U-bracket holes and fasten with a shim and nut.

See figure 6



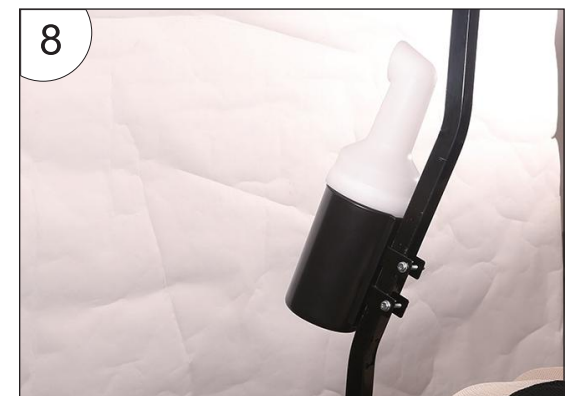
7. Tighten the screws with two 10mm wrenches.

See figure 7



8. Installation complete. As shown in the figure.

See figure 8



9. No drilling required, easy to install and multi installation position options.

See figure 9

