

# Golf Cart Horn&Wire Harness Installation Diagram

We are striving to build a reliable brand of golf carts parts and accessories.

Hope this manual can assist you to easier install.

For more technical support, please reach us via

Website : [www.10101.com](http://www.10101.com)

Email : [sale\\_service@10101.com](mailto:sale_service@10101.com)

Facebook : zhong zaiyang

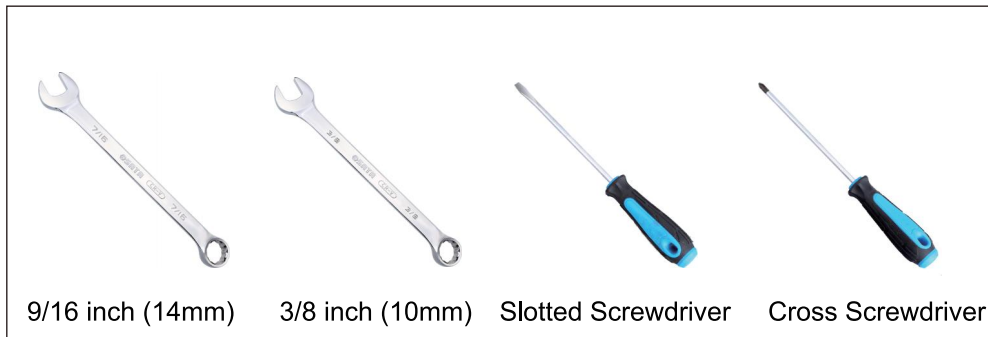
Youtube : 10L0L

Contents	Qty	Installation Tools	Qty
Horn.....	1	Cross Screwdriver.....	1
Horn Button&Wire Harness.....	1	Slotted Screwdriver.....	1
Screw.....	1	9/16 inch (14mm) Wrench.....	1
Plastic Sleeve.....	2	3/8 inch (10mm) Wrench.....	1
Iron sheets.....	2		
Metal Nuts.....	2		

See Figure 1



### Installation Tools



9/16 inch (14mm)    3/8 inch (10mm)    Slotted Screwdriver    Cross Screwdriver

### Installation Steps

1. Unscrew the screws on both sides of the center console with a cross screwdriver.

See figure 1



2. Lift the center console up gently.

See figure 2



3. Descend the wires of the horn and battery cable connector down through the center console.

See figure 3



4. Let the wires and connector go through the front of the cart.

See figure 4



5. Stack two iron plates into the position of the horn's screw.

See figure 5



6. Tighten the screws with a 10mm wrench.

See figure 6



7. Plug in the connection port of the horn.

See figure 7



8. Find the holes at the front of the cart which are for screwing.

See figure 8



9. Pass the long screw through the hole of the iron plates.

See figure 9



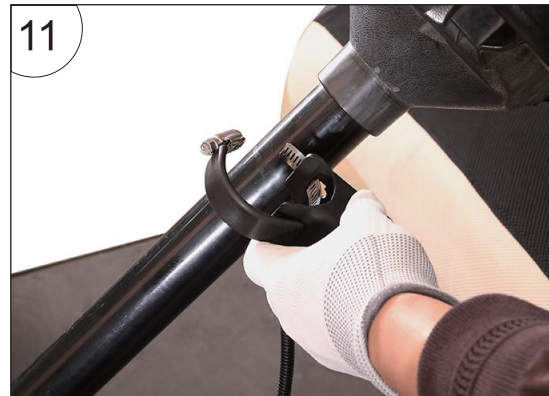


10. Tighten with a 10mm wrench.



See figure 10

11. Release the catch of the horn with a cross screwdriver.



See figure 11

12. Adjust the position and tighten it.



See figure 12

13. Cover the exposed cables with the plastic strip.



See figure 13

14. As shown in the figure.



See figure 14

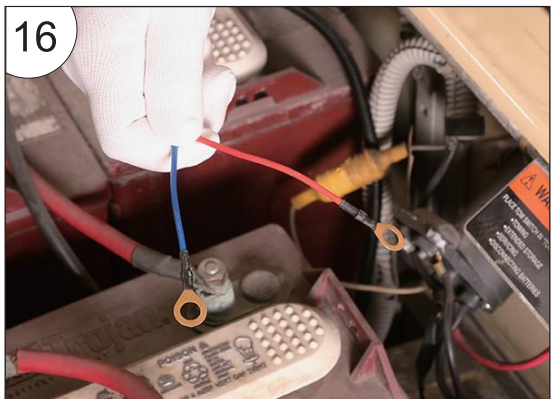
15. Connect the battery cable (can be placed under the cart), as shown in the figure.



See figure 15

16. Tighten the battery connectors with a 14mm wrench, as shown in the figure.

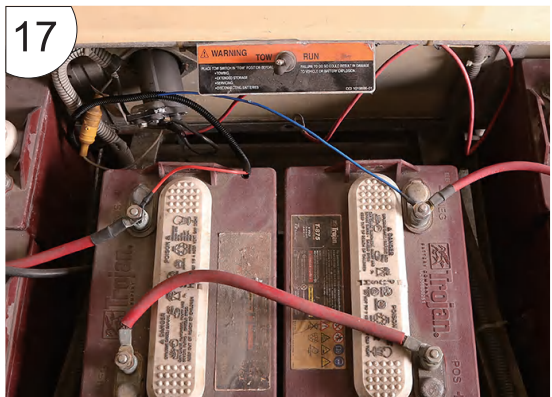
See figure 16



17. The red wire connects to the positive terminal and the blue wire connects to the negative terminal.

Note: the total voltage of the two batteries that connect the positive and negative terminal must not exceed 12V.

See figure 17



18. Install the center console and complete the installation.

See figure 18

