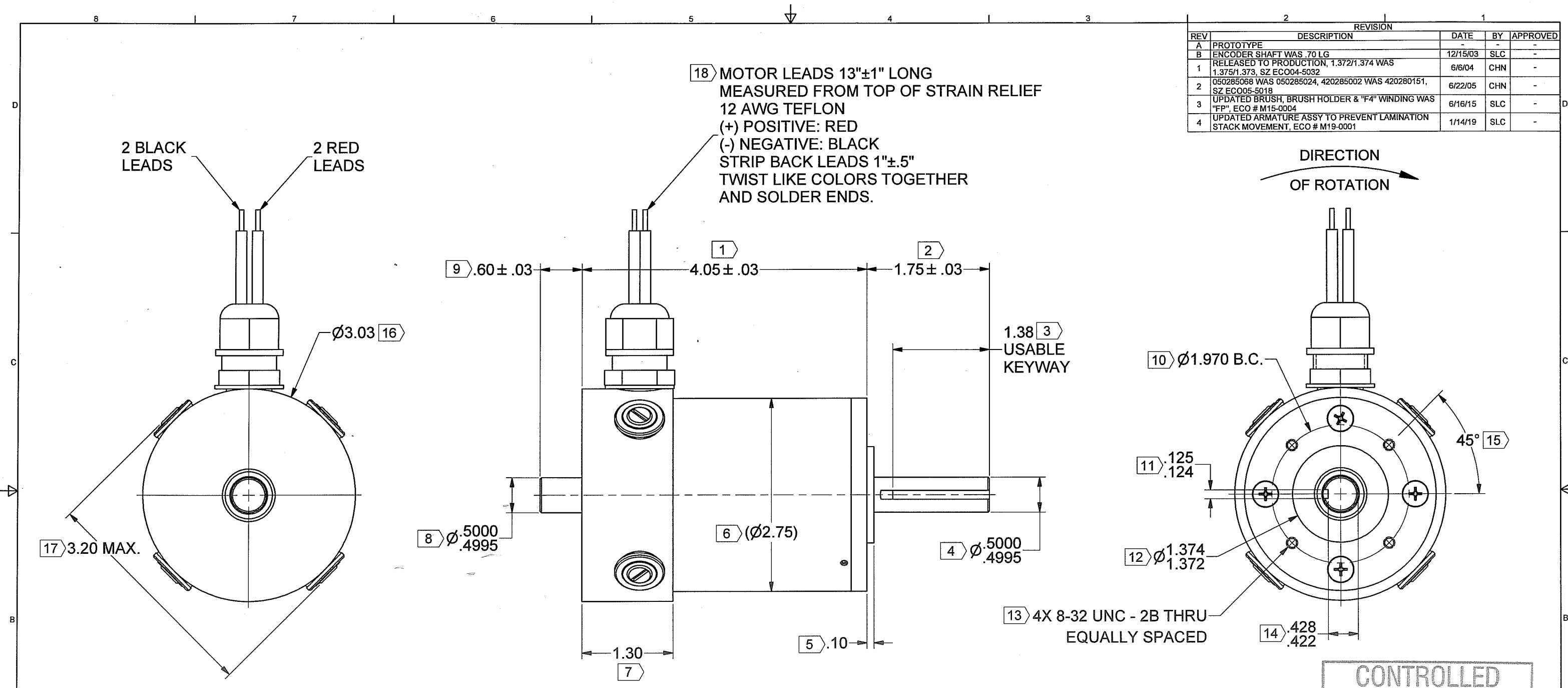


REV	DESCRIPTION	DATE	BY	APPROVED
A	PROTOTYPE	-	-	-
B	ENCODER SHAFT WAS .70 LG	12/15/03	SLC	-
1	RELEASED TO PRODUCTION, 1.372/1.374 WAS 1.375/1.373, SZ ECO04-5032	6/6/04	CHN	-
2	050285068 WAS 050285024, 420285002 WAS 420280151, SZ ECO05-5018	6/22/05	CHN	-
3	UPDATED BRUSH, BRUSH HOLDER & "F4" WINDING WAS "FP". ECO # M15-0004	6/16/15	SLC	-
4	UPDATED ARMATURE ASSY TO PREVENT LAMINATION STACK MOVEMENT, ECO # M19-0001	1/14/19	SLC	-



MOTOR SPECIFICATIONS:

TORQUE CONSTANT (Kt) = 5.41 ± 10% OZ-IN/AMP
 VOLTAGE CONSTANT (Ke) = 4.00 ± 10% VOLTS/KRPM

NOTES:

- MOTOR ROTATION IS CLOCKWISE WHEN VIEWED FROM OUTPUT SHAFT WITH POSITIVE VOLTAGE APPLIED TO RED LEAD.
- RUNNING MOTOR WITH ONLY ONE BLACK AND ONE RED LEAD WILL DAMAGE MOTOR.
- X IDENTIFIES INSPECTION DIMENSIONS.

CONTROLLED
 FEB 6 2019
DOCUMENT

UNLESS OTHERWISE SPECIFIED DIMENSIONS ARE IN INCHES & [mm]		THIRD ANGLE PROJECTION DO NOT SCALE DRAWING		THE INFORMATION CONTAINED IN THIS DRAWING IS THE SOLE PROPERTY OF MAGMOTOR TECHNOLOGIES. ANY REPRODUCTION OR DISCLOSURE OF THE INFORMATION CONTAINED THEREIN IN PART OR AS A WHOLE WITHOUT THE WRITTEN PERMISSION FROM MAGMOTOR TECHNOLOGIES IS PROHIBITED.		Magnmotor	
TOLERANCES ON: ANGLES = ± 1/2° X.XX [X.X] = ± .01 [0.25] X.XXX [X.XX] = ± .005 [0.12]		SIGNATURES		DATE		TITLE	
-		DRAWN RAL		12/5/2003		MOTOR ASSEMBLY, S28-F4-150X	
SPEC		CHECKED <i>SLC</i>		2/6/19		SIZE NUMBER	
FINISH NONE		ENG APPR. <i>EDR</i>		2/6/19		D 500280259	
SPEC		MFG APPR. <i>BT</i>		2/6/19		REV 4	
Q.A.		UNLESS OTHERWISE SPECIFIED REMOVE ALL BURRS & SHARP EDGES, COUNTERSINK TAPPED HOLES TO BODY SIZE FILLETS: .03 MAX. / EXTERNAL CORNERS: .015 MAX.		SCALE: -		WEIGHT: - LB. SHEET 1 OF 3	

Model	S28-F4-150X
Part Number	500280259
Nominal Voltage	24
Ke (V/Krpm)	4
Kt (oz-in/amp)	5.4
Resisitance (Ohms)	0.007
No Load Amps	4
RPM @ 24 Vdc	6100
Peak HP	3.5
Stall Torque (oz-in)	2000
Efficiency	88
Capacitors	Yes
Magnet Type	Neodymium
Weight (pounds)	3.5