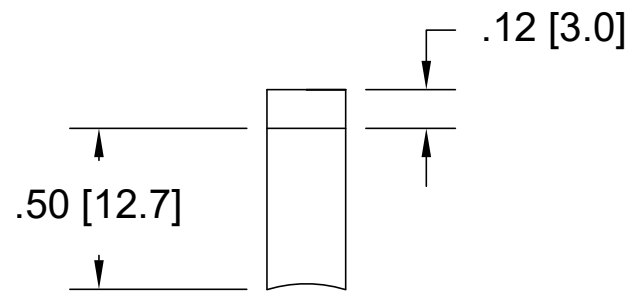
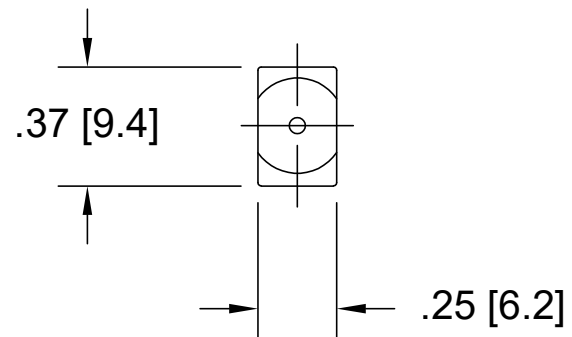
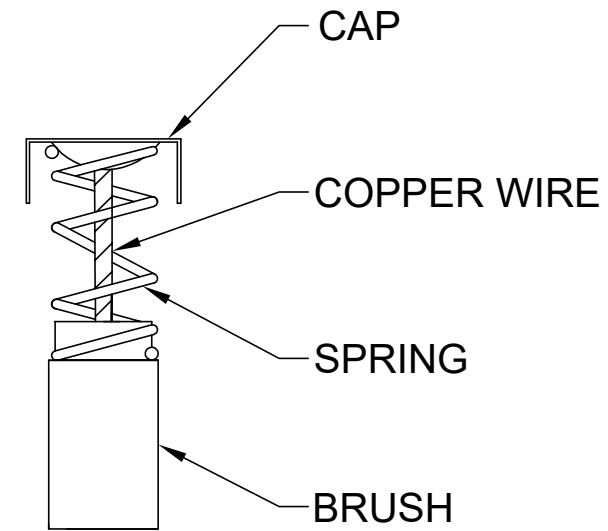
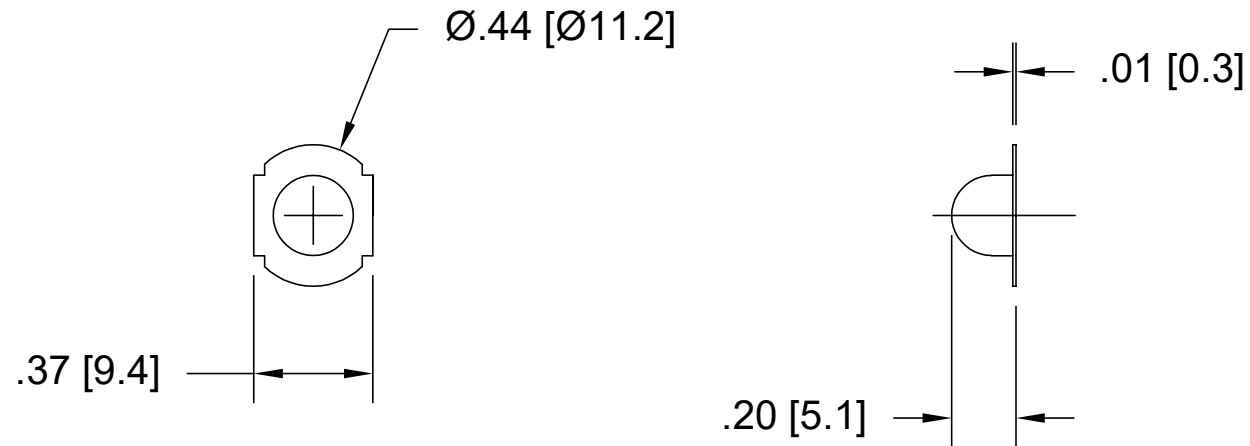


REVISION		DATE	BY	APPROVED
REV	DESCRIPTION	-	-	-
B	-	-	-	-

### BRUSH DIMENSION



### BRUSH ASSEMBLY



#### NOTES:

- BRUSH MATERIAL: F173
- CAP MATERIAL: Cu

UNLESS OTHERWISE SPECIFIED DIMENSIONS ARE IN INCHES & [mm]		THIRD ANGLE PROJECTION DO NOT SCALE DRAWING		THE INFORMATION CONTAINED IN THIS DRAWING IS THE SOLE PROPERTY OF MAGMOTOR TECHNOLOGIES. ANY REPRODUCTION OR DISCLOSURE OF THE INFORMATION CONTAINED THEREIN IN PART OR AS A WHOLE WITHOUT THE WRITTEN PERMISSION FROM MAGMOTOR TECHNOLOGIES IS PROHIBITED.		MAGMOTOR™	
TOLERANCES ON: ANGLES = ± 1/2° X.XX [X.X] = ± .01 [0.25] X.XXX [X.XX] = ± .005 [0.12]		125 ✓		SIGNATURES		DATE	
MATERIAL		DRAWN SLC		5/16/2024		TITLE	
SPEC		CHECKED				BRUSH, C32 & C40, .25" x .37" x .50" LG, MATERIAL: F173	
FINISH		ENG APPR.				SIZE	
SPEC		MFG APPR.				NUMBER	
UNLESS OTHERWISE SPECIFIED REMOVE ALL BURRS & SHARP EDGES. COUNTERSINK TAPPED HOLES TO BODY SIZE FILLETS: .03 MAX. / EXTERNAL CORNERS: .015 MAX.		Q.A.				D 120405009	
		SCALE: NONE		WEIGHT: -		REV B	
		SHEET 1 OF 1					