



Hands Free Latched door Opener Installation Instructions

* Patent Pending

NOTE: Unit comes fully Assembled. No Tools Needed! NO DRILLING HOLES!

Before you begin:

Thank you for buying a Door Buddy. For your benefit, read these instructions carefully before installation. If you have any questions, please send us a message at mydoorbuddy.com

Door Opener Options - 2 to choose from



Lever Actuation requires the use of the Grommets. There are 2 Grommets supplied; 1 for narrow handles; and one for larger handles. Choose the appropriate Grommet. The Lever Option is the easiest to activate.



Barrel Actuation requires the use of the Strap with double back tape. The strap is wrapped around the Barrel next to the Knob or Lever.

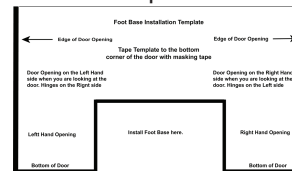
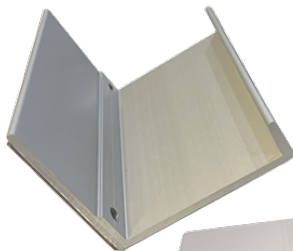
Components & Material of Construction

Extruded Aluminum Foot Base

Anodize Coating

Template

Lever Grommet ASM
(Industrial Cabinet Grommets)
Large & Small



Extruded Aluminum Pedal

Stainless Steel Bolt

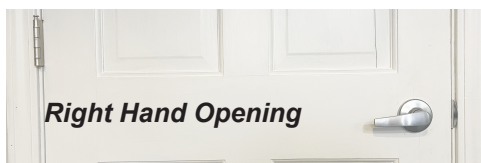
Barrel Strap ASM - High Strength Webbing



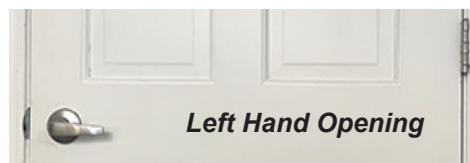
We use industrial Grade Extruded Aluminum that has a Clear Coat Anodize finish -no paint to chip, nothing to rust. Attractive sleek design. No drilling for mounting. Attaches with 3M double back Industrial Tape. Mounts in less than 15 minutes.

FIRST STEP what is my Door Opening Orientation

LEFT or RIGHT Orientation: When you are standing in front of your door, are the hinges on the left side of the door and the door Knob on the right side; we call this a Right Hand Opening. My Door Buddy comes set for a Right Hand orientation. If you have the opposite configuration (Left Hand Opening), then you will need to take a Phillips Screwdriver and remove the screw and switch the Pedal to face the opposite direction.



Right Hand Opening



Left Hand Opening



Installation Instructions cont'd

Which way do you want to Actuate the Door Opening?

Door Lever Handle Option using Grommets for the Cord attachment. Best Option



Door Buddy will not work on a Door Knob without a wide Barrel



Door Knob Barrel Option using the webbing strap to wrap around the barrel of the Door Knob



Door Lever Handle Option Installation with Grommet

1) Determine the of size Grommet for the Handle/Lever. Two Grommet sizes are provided - small & large. Push and stretch the Grommet onto the Lever 1/2" up the handle.



The unit comes with the cord installed on the Large Grommet. if you need the small Grommet, remove the cord and reinstall on the Small Grommet

Door Knob Barrel Option Installation with Strap

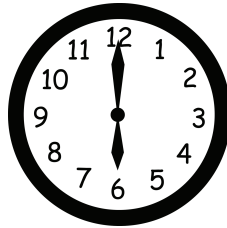
Determine the direction of travel of the Barrel prior to installation. If the hinges are to the right of the knob, the Strap should be hanging down on the hinge side of the knob. This would be a LH opening door as shown below. A RH would be the exact opposite.



Door Knob Barrel Option Installation cont'd

1) **Surface Preparations:** Use above 50°F. Surfaces must be clean, dry, and free of foreign materials. Clean surface with rubbing Alcohol or acetone.

2) Remove protective cover off the tape on the back side of the Strap. **Note: The position of the Strap can no longer be Corrected after mounting.** Carefully wrap the Strap in the direction indicated above and press the Tape firmly against the door barrel. Apply pressure evenly across the Strap and rub the Strap in the direction of the wrap. Final strength of the bond is reached after 24 Hours. Do not use the Door Buddy in the first 24 hours of attaching the Foot Base & Strap.



Foot Base Installation on Door

1) Tape The Foot Base Template to the bottom of the Door underneath the Door Lever as indicated for the correct orientation of LH or RH.

2) **Surface Preparations:** Use above 50°F. Surfaces must be clean, dry, and free of foreign materials. Clean surface with rubbing Alcohol or acetone.

3) Remove protective cover off the tape on the back side of the Foot Base. **Note: The position of the Base can no longer be corrected after mounting.** Carefully position the Foot Base in the opening indicated and press the Foot Base against the door. Apply Pressure evenly across the plate. Hold tight for 1-2 minutes allowing the base to seat to the door surface. Final strength of the bond is reached after 24 hours. Do not use the Door Buddy in the first 24 hours of attaching the Foot Base.

3M Double Back Industrial Tape



4) Attach the "S" Hook to the Pedal. My Door Buddy is now ready to use.

mydoorbuddy.com

The Door Buddy Story

Bob & Ron are Grillin Buddies who fancy Martini's. Bob called me one day for he knows I am an Inventor of many products. He said "Ron I am tired of spilling my Martini's when I go out the door to the Patio, can you invent a "hands free door opener for a latched door"? Well I was having the same problem! I said, "Let me think about it for a few days". The next week I spilled 2 glasses of wine when I headed to the Patio. Well I guess it is time to go to my shop and make what is in my head. Door Buddy is the result. ***A Hands Free Door Opener for a Latched Door.*** We sure enjoy using our Door Buddies, whether we have our hands full of drinks, or a plate of food heading to the BBQ. Safe easy travel with no spills. We sure hope you enjoy using the product as much as we have.

Bob & Ron, Grillin Buddies

Tips

1. Door must open freely without using force.
2. Latch Bolt & Spindle need to turn freely.
3. Anywhere we use double back tape, make sure you prepare the surface in order to have a secure bond.
4. You only have one chance to secure the Base for the adhesive will not let you pull it off and retry positioning so make sure you are careful in your first try.
5. Depress Pedal and pull door backwards to open. On the push side make sure your pedal is over far enough to clear the opening.
6. Grommets need to be tight on the handle. We provide a Large & Small Grommet. If the small is still big, contact us for a replacement with an even smaller grommet.
7. You can mount a Door Buddy on each side of the door to activate the door in two directions.
8. After several Martini's it is possible you will still spill your drink when activating the door.

Trouble Shooting

Issue	Problem	Correction
Door won't open	Is the door handle engaged all the way	Stiff handle or string is stretched
Pedal fully engaged, door won't open	Will the door open freely	Door fit is too tight, correct fit
String is stretched, pedal not engaging	String needs to be replaced	Contact us for a replacement
Grommet keeps sliding off	Wrong size grommet on handle	Replace with smaller grommet
Foot Base came off	Foot Base needs to set for 24 hours. Was door cleaned with alcohol prior to install	Contact us for a replacement replacement Tape
Door opened fine, but spilled my Martini	How many Martini's have you had	Switch to water for a while

mydoorbuddy.com

brought to you by Grillin Buddies LLC
Fort Wayne Indiana