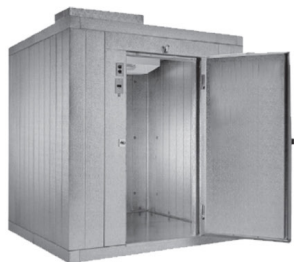


2022



# REFRIGERATION CATALOG

THE LEADERS IN WALK-IN REFRIGERATION



**(877) 907-8384**

[www.bushrefrigeration.com](http://www.bushrefrigeration.com)

BUILT TO ORDER DISPLAY  
STORAGE / WALK-INS  
SELF-CONTAINED COOLERS  
SOLID DOOR COOLERS  
WALK-INS FLORAL COOLERS

# Why Buy From BUSH?

## WHY BUY FROM BUSH REFRIGERATION

Founded in 1979, Bush Refrigeration which is family owned, has grown from a local startup business to an established company selling commercial refrigeration products nationwide.

During the past four decades, we've experienced extraordinary growth here at Bush Refrigeration, thanks largely to our continued commitment to teamwork, technology focused strategies and our unwavering dedication to you, our customer.

Our goal is to make your purchase a pleasant experience from start to finish. Our sales personnel have been trained in all aspects of refrigeration and can help you determine what would be best for your application. Our individual attention, combined with exceptional customer service is the reason our customers are loyal to Bush Refrigeration. Enjoy browsing through our catalog of commercial refrigeration equipment. In the event you don't find what you are looking for in our catalog, we encourage you to also visit our website at [www.bushrefrigeration.com](http://www.bushrefrigeration.com), where you will certainly find what you are looking for. We are eager to earn your business so please give us a call today at (877) 907-8384 and experience the difference!

Thank You,  
Bush Refrigeration

## FINANCE YOUR COMMERCIAL REFRIGERATION

Once you have decided on the refrigeration equipment that is best suited for your business, the next step is deciding how you will pay for that equipment. Equipment financing allows you to free up critical cash for other important expenditures. Whether the cost of the equipment is small or large, managing your business cash flow is an important consideration for business owners. Equipment financing allows you to make predetermined fixed monthly payments and helps establish or enhance your credit profile. Financing allows your refrigeration equipment to "earn its keep" by making manageable payments as your equipment helps drive revenue for your business.

- Equivalent to 100% financing
- Fixed monthly payments over the lease term (typically 12-60 months)
- Maximize your working capital
- Increased cash flow gives your business more flexibility
- Own the equipment upon completion of the lease term
- Tax advantages\*

After reading these benefits, if financing your equipment sounds attractive, we invite you to apply. We will have our equipment finance partner review the information submitted and based on your credit profile, will typically have an approval within 24 hours.

\*Always consult your tax advisor as to any tax advantage that may be available with leasing.

# Floral Coolers

Full line of floral refrigerators available



Sizes Available:

**28<sup>1</sup>/<sub>4</sub>" x 32" x 78"** 1 door

**52" x 32" x 74<sup>1</sup>/<sub>2</sub>"** 2 door

**77" x 32" x 74<sup>1</sup>/<sub>2</sub>"** 3 door

Wide Door Model

**70" x 32" x 74<sup>1</sup>/<sub>2</sub>"** 2 door

## Longdoor Display/Reach In



Available in 2 or 3 door models

Call today for Pricing!

877-907-8384

## Display Storage Walk-Ins



### Longdoor Walk-In III

#### Standard With Bush:

- Full length doors with heated frames
- Low velocity / high humidity refrigeration

#### Choice Of Colors:

- Interior and exterior: Black, white, galvanized

#### Your Options:

- End glass windows
- Storage shelving
- Custom sizes

#### Warranty:

- 1 Years on parts
- 5 Years on compressor

**8'7" x 7' x 7'6"** Call for Price

Additional sizes available

Top Mount Condensing Units Available

Visit us at [bushrefrigeration.com](http://bushrefrigeration.com)



# Self-Contained Coolers



## Self-Contained Coolers

- Hinged or sliding glass doors available
- Equipped with double paned glass
- Low e film protection to reduce condensation on some models
- High efficiency cabinet insulation
- 3 or 4 adjustable heavy duty shelves per door
- LED lighting for energy savings
- White or black exteriors are available on most models
- No drain required
- Many sizes and configurations available, call us now!
- Available in top + bottom mount condensing units

**Please call 877-907-8384 for sizes and pricing!**

# Self-Contained Freezers

## Self-Contained Freezers

- Heated glass doors
- Some models hold -10° for ice cream
- 4 adjustable heavy duty shelves per door
- Electric evaporator on most models
- Electronic controls
- High efficiency cabinet insulation
- LED lighting for energy savings
- White or black exteriors are available on most models
- Many sizes and configurations available, call us NOW!
- Available in top + bottom mount condensing units



Please call 877-907-8384 for sizes and pricing!

Visit us at [bushrefrigeration.com](http://bushrefrigeration.com)



# Storage Coolers & Freezers



## Storage Coolers and Freezers

- Stainless steel door and front available
- Adjustable heavy duty shelves
- Bottom or top mount compressors available
- Condensate evaporator, no drain required
- Casters and locks included on most models
- Power cord included
- Interior lights
- UL approved

### Cooler -

Holds 36°-40°F for packaged goods

### Freezer -

0 to -10°F for ice cream

5 to -5°F for frozen foods

**Please call 877-907-8384 for sizes and pricing!**

# Grocery and Convenience



Open cases can be replaced with Walk-In or Reach-In Coolers for better efficiency. These coolers keep the cool in while offering an attractive and organized display option. Grocery and Convenience Store Walk-Ins or Reach-Ins are made to order so they can fit your business' exact needs and requirements. Employees can easily stock shelves from behind without obstructing customers' view and access to inventory.

## Endless Coolers and Freezers



### Features:

- Unique product with endless possibilities, great design and warranty
- 5 shelves per door
- Door frames in black standard
- Designed for remote refrigeration
- Available sizes: 2, 3, 4, or 5 doors, endless design for continuous lineups

Visit us at [bushrefrigeration.com](http://bushrefrigeration.com)



# Open Dairy/Meat/Produce



- Ovation dairy open merchandisers
- Self-contained refrigeration
- Removable ends for continuous line-up (drain required)
- Available in 60" high (2) shelves or 72" high (3) shelves
- \*Produce includes (1) shelf
- Electronic control system
- Electronic control system
- Available in black or white
- Available in dairy, meat, and produce

Available in solid, glass and curved glass ends.



Available in Self-Contained & remote

- Cases can be joined together to make "lineups."
- Self-contained & remote models available
- Night curtains available on all models
- Electronic control system standard
- Available in dairy, meat and produce

Self-contained and remote:

**38" x 30" x 72"**

**50" x 30" x 72"**

**74" x 30" x 72"**

**98" x 30" x 72"**

Remotes only sizes:

**122" x 30" x 72"**

**146" x 30" x 72"**



# Display Cases

## Open Coolers

- Ovation produce open merchandiser
- Available in black, white and stainless steel
- Shelving with product stop
- Removable ends for continuous line-up
- Electronic control system with automatic air defrost
- New high efficiency air screen technology
- Self-contained and remote units available
- Available in dairy, meat or produce



## Grab N Go Endless Merchandisers

- Open impulse merchandisers
- Multipurpose, endless design
- Self-contained refrigeration, remote units available
- Removable step shelf
- Available in white or black interior and exterior
- Choice of curved or straight plexi end panels
- Electronic control system



# Service Glass Displays

## Curved Glass

Great for deli, meat, fish, Salads, and specialty products

Available in 4', 6', 8', 10' and 12' lengths

- Stainless top
- Available in white, black or stainless steel exterior
- LED lighting
- White aluminum interior, chrome trim
- Condensate evaporator (Self-contained models only)



**Self-Contained shown, remote models available**



**Deli shown**

- Available in self-contained and remote
- White, black or stainless steel exterior
- Sizes are 4', 6', 8', 10' and 12' lengths
- Removable ends allow for custom length in any combination
- Single duty, no bottom storage
- Sizes available to fit through narrow doors

# Deli Meat and Fish Cases



Self-Contained shown, remote models available

## Traditional Cases

- Bottom double duty storage
- Mezzanine shelf included on deli model only
- Stainless top
- White front and sides
- LED lighting
- White aluminum interior, chrome trim
- Automatic condensate pan (Self-Contained models only)

## Available Sizes:

**50" x 37½" x 52"**  
**71" x 35½" x 52"**  
**95" x 35½" x 52"**  
**119" x 35½" x 52"**  
**143" x 35½" x 52"**



## Fish and Poultry

- Available in white, black or stainless steel exterior
- White interior and white aluminum floor
- Double pane removable rear doors
- Bottom storage with removable rear bottom doors
- Thermal insulated front glass 28" high
- Heavy gauge steel super structure
- GFI protected outlet mounted rear
- Drain included for cleaning

# Bakery Display

- Stainless steel door and front available
- Available in black, white and stainless
- Includes 2 stainless steel shelves and 3 levels of display
- Double panoramic curved front glass
- Gravity cooling
- Smart temperature control
- Maintenance free condenser
- LED lighting



- Available refrigerated or dry
- Designer white or glossy black aluminum exterior
- 2 Rows of glass shelving
- 2" Gray bumpers
- Heavy duty stainless steel top
- Extra wide double bend curved glass
- Temperature and defrost electronically controlled (excludes dry)



**Please call 877-907-8384 for sizes and pricing!**

# Pizza Prep Table

For the perfect pizza every time. Extra wide 19.5" full length Removable work surface. Labor Saving design. Available in combinations of door and drawers

**Features:**

- Self-contained refrigeration
- Stainless steel front, top, and sides
- 115v AC with power cord



# Compact Sandwich

Our Compact Sandwich Units are perfect for the preparation of sandwiches and other fast foods. Oversized, Self-Contained refrigeration, 115v AC with power cord.

Many sizes and combinations of doors & Drawers



**Available in megatops**

# Under Counter & Worktop Units

**Features:**

- Available in coolers and freezers
- Castors come standard on most units
- Also available with drawers
- Worktop units provided include splash top



Visit us at [bushrefrigeration.com](http://bushrefrigeration.com)



# Ice Cream

## Ice Cream Dipping Cabinet

- Locked-in temperature equal from top to bottom
- LED lighting for interior canopy
- Attractive contemporary design available with curved glass front
- Sturdy, clean stainless steel deck
- Manual defrost system
- Standard plastic night covers for case opening included on some models
- Maintains -10°F ~ 8°F for the best in frozen Ice cream!



## Roll Top Freezers

- Curved or flat lid displays available
- White zinc-coated baked-on enamel steel exterior
- Painted white powder-coated steel interior
- Heavy-duty casters, two locking
- Bottom drain with plug
- External analog thermometer display
- Lid lock and keys
- Low energy consumption



# Milk Coolers

## Milk and Dairy Coolers

- Energy efficient 2" non-CFC foamed-in-place polyurethane
- Powder-coat or stainless steel exterior finish
- Self-contained, ready to plug in with 8' cord
- Removable plastic, easy clean bottom pans
- 2" Dial thermometer
- Bottom drain
- Stainless steel heavy gauge top and lids



# Glass Door Merchandisers

- Digital temperature control
- High-tech monitor
- Efficient refrigeration system
- LED interior display system
- Triple pane heated glass doors
- Automatic evaporator fan motor delays
- High-density polyurethane insulation
- Freezer holds 10°F - 15°F for the best in bagged ice storage!



# Indoor & Outdoor Merchandisers

Features:

- R134a Refrigeration Systems
- Total Steel Cabinet construction
- 1 & 2 door models available



Indoor unit



Outdoor unit

# Ice Machines

Features:

- Many sizes available For both cubed & flaked ice
- Self-contained or Remote condensers
- Durable stainless steel
- Water or air cooled models
- Filter included



Undercounter model



Cuber with bin

Visit us at [bushrefrigeration.com](http://bushrefrigeration.com)



# Reconditioned Supermarket Equipment

## Now available

A complete line of reconditioned supermarket equipment at great prices! Name brands like Hussmann, Tyler, Kysor-Warren and Hill Phoenix, all rebuilt. New refrigeration is also available call today!

### Meat Cases

Meat Cases, like the one shown here, come in 8' and 12' sections with removable ends. The endless design allows for a continuous line up of any combination of 8' and 12' cases. The shelves are adjustable. The refrigeration coils are extra heavy duty for more efficient operation.



### Produce Cases

Produce cases, like the one shown here, come in 8' and 12' sections with removable ends. The endless design allows for a continuous line up of any combination of 8' and 12' cases. The shelves are adjustable and there are options available including pegboard, extra shelves and product stops.



### Island Cases

Island cases, like the case shown here, are available as coolers or freezers. They also come in different lengths and widths. These cases are also available in a narrow depth which can fit through most doors.



**Also available: dairy cases and multi-use open cases. If you don't see what you are looking for call (877) 907-8384 and ask.**



# Build-It-Yourself

## Glass Doors

The glass doors sold by Bush Refrigeration are the finest doors in the industry. Cooler doors are dual-pane insulated glass with heated frames. Freezer doors are triple-pane insulated glass. They are available in black or silver finishes with flat wire shelving and energy efficient LED lighting included with every door. Bush offers a wide variety of size in widths ranging from 23"-30" and heights from 67"-79". Glass access doors are also available!

Call us today.

**(877) 907-8384**



## Walk-In Doors Built To Order

Every walk-in needs a door, even older boxes that simply need a replacement door. We carry walk-in doors of any size. Doors are available with windows and pre-hung frames and in various finishes. We also carry any size manual and electrically-operated sliding doors.



## Condensing Units & Evaporators

Our trained staff of technicians can help you design a refrigeration system tailored to meet your needs. We carry a complete selection of condensing units and coils. Why pay high prices when you can buy equipment directly from a major supplier? If you need assistance, feel free to call us. We will be happy to assist you with your refrigeration components.



**Condensing unit**

**Drop in Refrigeration**

Visit us at [bushrefrigeration.com](http://bushrefrigeration.com)



# Walk-In Liquor and Beer Caves



Our Walk-In Liquor and Beer Cave Coolers can be custom built to fit your business' exact needs. They accommodate single bottles as well as six packs and large cases. Ensure that your customers get the best quality products by providing colder beer, champagne, wine, and other specialty beverages at the correct temperature levels. In addition, you can easily increase sales by offering convenient beverages for on-the-go shoppers. Display your products in an organized, attractive way with our Liquor and Beer Walk-In and Reach-In Coolers.



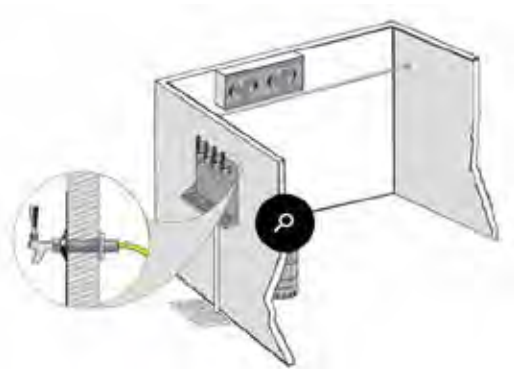
# Brewery

As craft beers become more and more popular, many breweries are taking advantage of the public interest in the brewery process. Brewery walk-in coolers with custom displays are the perfect option for showcasing the creation and storage of your craft beers. These custom Walk-ins are equipped with taps and are great to place behind a bar so that customers feel like they are really surrounded by the different aspects of a craft beer brewery.



A brewery walk-in cooler stores both kegs and the beer lines for delivery of products to shanks mounted direct through the cooler wall. Beer is dispensed at the same temperature as it is stored in the walk-in.

Straightforward dispensing! Shanks and dispensers are mounted directly into the walk-in. Direct draw system offers the benefit of hidden lines, making service and access easier.



# Walk-In Coolers And Freezers

## Standard Walk-Ins

At Bush Refrigeration we have always been known for selling the highest quality refrigerated equipment at the lowest possible prices to the end user. Call today for Information on how Bush can serve your refrigeration needs.

### Available Features of Standard Walk-Ins

- Indoor or outdoor
- Various finishes available
- Coolers or freezers
- Custom sizes available
- Quickships available - call for sizes
- Top mount drop in and remote refrigeration available



**Shown with optional floor**

## Reach-In Coolers and Freezers



Bush now offers walk-in panel construction for endless reach-ins. Featuring taller doors for the same low price as conventional reach-ins. Walk-in panel construction allows for easy assembly.

# Combo Storage

Combination units are great for businesses that have limited space or minimal storage needs. Freezer access doors can be located externally or inside of the refrigerator section of the unit. Multi temperature units offer a convenient storage option for those businesses that may stock small amount of many different products. These combination units are customizable in size as well as finish.



**Nobody beats our prices on combo Cooler Freezers**

# Outdoor Walk-Ins



If you are like most businesses, it seems that you never have enough refrigerated storage space and your current building is filled to capacity.

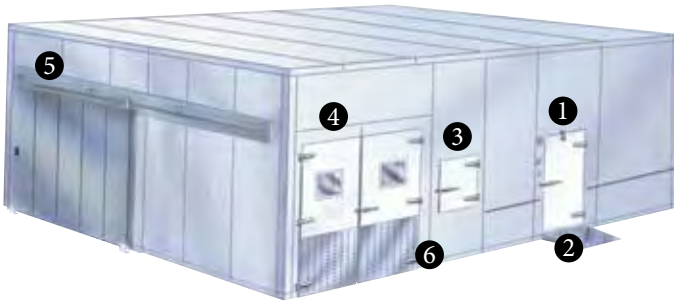
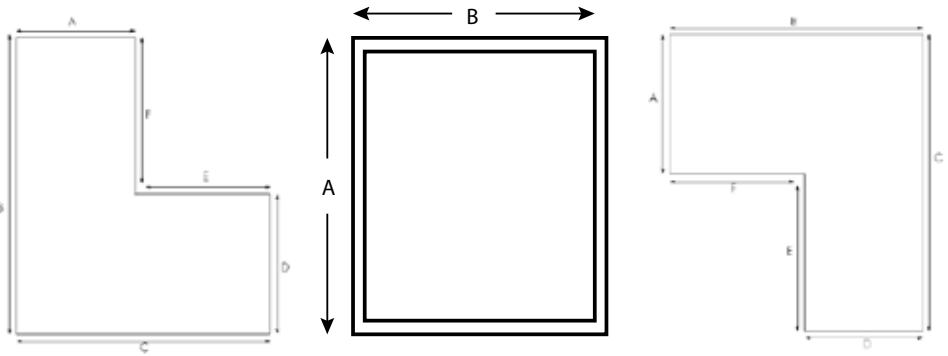
At Bush Refrigeration, we specialize in outdoor walk-in coolers and freezers. They can be independent from your existing building or we can design them so they are flashed to your building and entry is obtained from inside the store. We are experts on weatherproof roof systems which are flat or sloped to accommodate snow loads as well. Please call us for more information.

Visit us at [bushrefrigeration.com](http://bushrefrigeration.com)



# Walk In Fax Form

Please Fill In And Fax To: 856-963-0770



## Available Options

This box shows examples of many available options:

1. Personnel Access Door (various sizes available)
2. Exterior roll-in ramp (interior ramps available)
3. Reach-in/Pass thru Door (any size, glass or solid)
4. Bi-Parting Doors (two 36" doors shown)
5. Manual Sliding Door (also available electrically operated)
6. Diamond Plate Steel - heavy duty Diamond plate steel is available to reinforce floors for pallet jack use or to reinforce doors or walls.

Length: \_\_\_\_\_

Depth: \_\_\_\_\_

Height: \_\_\_\_\_

Note: Standard height is 7'6" or 8'

- |                                       |          |         |       |
|---------------------------------------|----------|---------|-------|
| 1. Location of Walk-In                | Indoor   | Outdoor |       |
| 2. Location of refrigeration          | Indoor   | Outdoor |       |
| 3. Do you want glass display doors    | Yes      | No      |       |
| 4. Type of floor in building          | Concrete | Wood    |       |
| 5. Type of product to be refrigerated | Beer     | Wine    | Other |

Has anyone in your company spoken to Bush Refrigeration before?

Yes

No

Contact \_\_\_\_\_

Business Name \_\_\_\_\_

City, State, Zip \_\_\_\_\_

Phone \_\_\_\_\_

# Refrigeration Equipment Financing

Once you have decided on the refrigeration equipment that is best suited for your business, the next step is deciding how you will pay for that equipment. Equipment financing allows you to free up critical cash for other important expenditures. Whether the cost of the equipment is small or large, managing your business cash flow is an important consideration for business owners. Equipment financing allows you to make predetermined fixed monthly payments and helps establish or enhance your credit profile. Financing allows your refrigeration equipment to “earn its keep” by making manageable payments as your equipment helps drive revenue for your business.

- Equivalent to 100% financing
- Fixed monthly payments over the lease term (typically 12-60 months)
- Maximize your working capital
- Increased cash flow gives your business more flexibility
- Own the equipment upon completion of the lease term
- Tax advantages\*
- \*Always consult your tax advisor as to any tax advantage that may be available with leasing.

After reading these benefits, if financing your equipment sounds attractive, please give us a call. We will have our equipment finance partner review the information submitted and based on your credit profile, will typically have an approval within 24 hours.

## GIVE US A CALL AT 1-877-907-8384 TO GET STARTED!

### Frequently Asked Questions When Financing Refrigeration Equipment

Q: What is the interest rate in this finance agreement?

A: Equipment financing companies offer fixed rate financing for payments that remain the same throughout the term of the lease regardless of interest rate fluctuations.

Q: How long does it take to get approved?

A: Our equipment finance partner will typically have an approval within 24 hours from the time that the application is submitted.

Q: What should I do if I have problems with the equipment that I finance?

A: Most of the refrigeration equipment sold by Bush Refrigeration carry a warranty. Please give Bush Refrigeration a call with any issues you experience with your equipment.

Q: What are the tax benefits associated with financing?

A: As the lessee, you may be able to deduct the monthly finance payment as a business expense on your tax returns. You should seek specific advice from your accountant.

22/90

PRSRT STD  
U.S. Postage  
PAID  
Bellmawr, NJ  
PERMIT # 1151



BBB Rating A+



We have a full line of equipment to fit any need.  
Call toll free for an instant quote

**877-907-8384**

fax 856-963-0770

[www.bushrefrigeration.com](http://www.bushrefrigeration.com)



Walk In



Variety of Prep Tables



Dry and Refrigerated Bakery Case



Draft Beer Cooler

Specifications subject to change without notice