

Data needed for 2 basins

Data needed for 1 basin

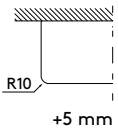
CODE	L	Tap (Y/N)		X1	Y1
		Yes	No		

IMPORTANT: Choose one of the two options to complete the slab.

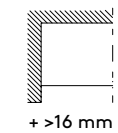
**NAILA BASIN**

Choose the finish for the left side

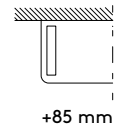
STANDARD



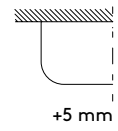
TO THE WALL\*



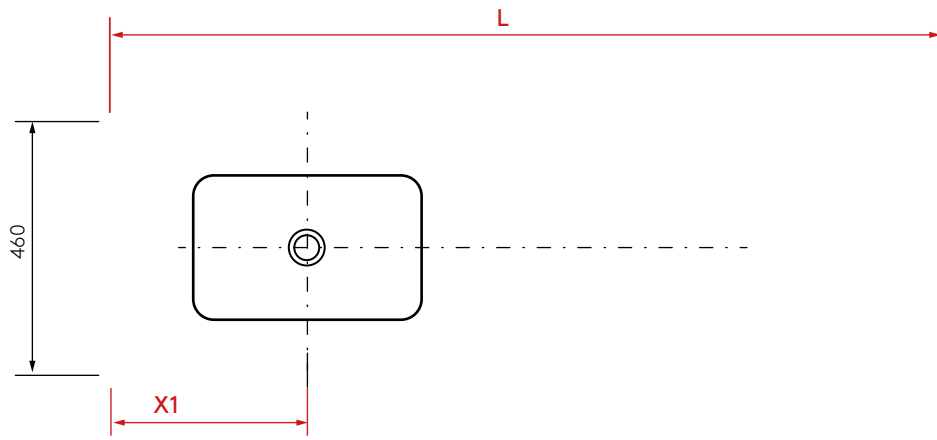
WITH TOWEL BAR



CURVE

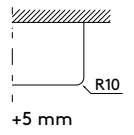


M = Size of the vanity  
 L = M + Left finish + Right finish  
 L (Up to 2400)  
 X1 and Y1 (if two basins are wanted) must be a minimum of 300 mm

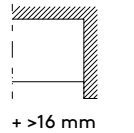


Choose the finish for the right side

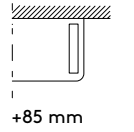
STANDARD



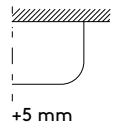
TO THE WALL\*



WITH TOWEL BAR



CURVE



\*Installing with a power strip is recommended.