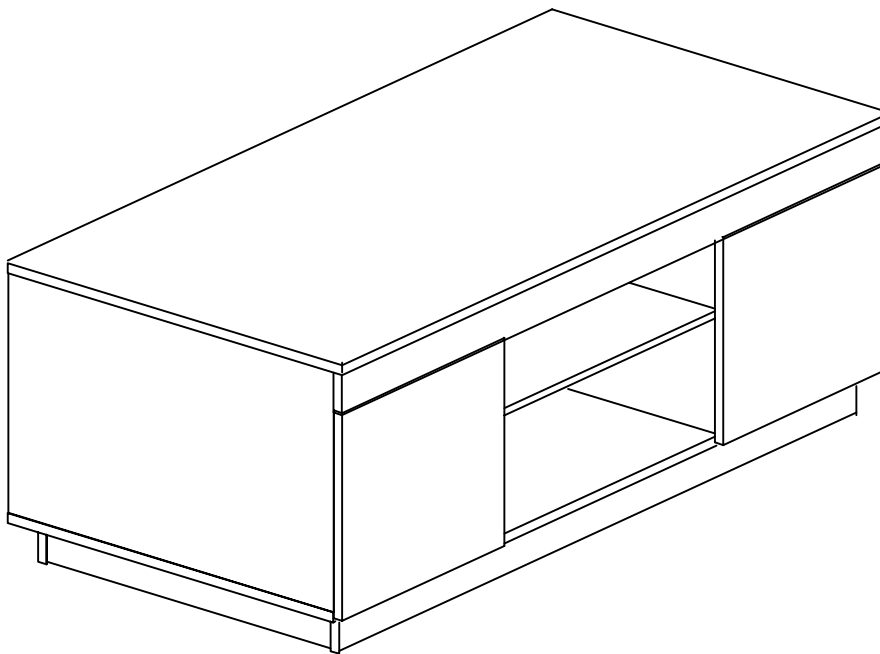


# Assemble Instructions

## Cuppa Series



# Lifely\*

Product Code

CPA-CT1250-WOK

Cuppa Coffee Table

Dimensions(W x D x H)

1200\*600\*450mm

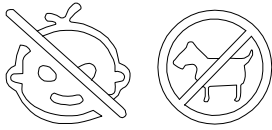
---

### Important

Please read through instructions carefully  
Before assembly and keep for future reference.

For our full catalogue of assembly instructions,  
Visit:[lifely.com.au/assembly](http://lifely.com.au/assembly).

## Important Tips and Maintenance



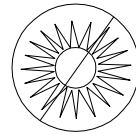
1. Keep children and animals away from working area as smaller parts may cause choking if swallowed



2. Never place liquids or anything damp upon furniture as it will mark, Ensure a coaster or running is beneath.



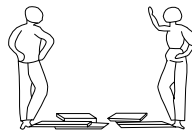
3. New use ammonia based cleaning products as it will damage the finish.



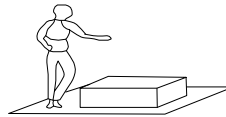
4. To avoid fading, keep furniture out of direct sunlight.



5. Use a soft or damp cloth (dry cloth) when wiping or cleaning surface.



6. Two person are required



7. Lay a soft matt down to protect the furniture pieces before and during assembly.

So your relationship is strong. But is it flat-pack furniture strong? Unless you're an aerospace engineer, assembling furniture can be slightly stressful. We recommend meditating quietly, pouring yourself a herbal tea (or slightly less herbal wine) and tackling things one step at a time. If you feel a passive aggressive remark coming on, try a compliment instead .E.g. "You're so good looking".

This 24-Step assembly should take around 60 minutes with an Allen Key-or 40 minutes with an electric drill.  
Godspeed.

Designed for everyday

# Components Hardware

Please check you have all the fittings part or tools are listed in below.

No.A  
Quantity:28Pcs  
Dowel 8\*40mm



No.B  
Quantity:32Pcs  
Cam Bolt



No.B  
Quantity:32Pcs  
Cam Nut



No.C  
Quantity:24Pcs  
Screw M3.5\*14mm



No.D  
Quantity:4Pcs  
Hinges



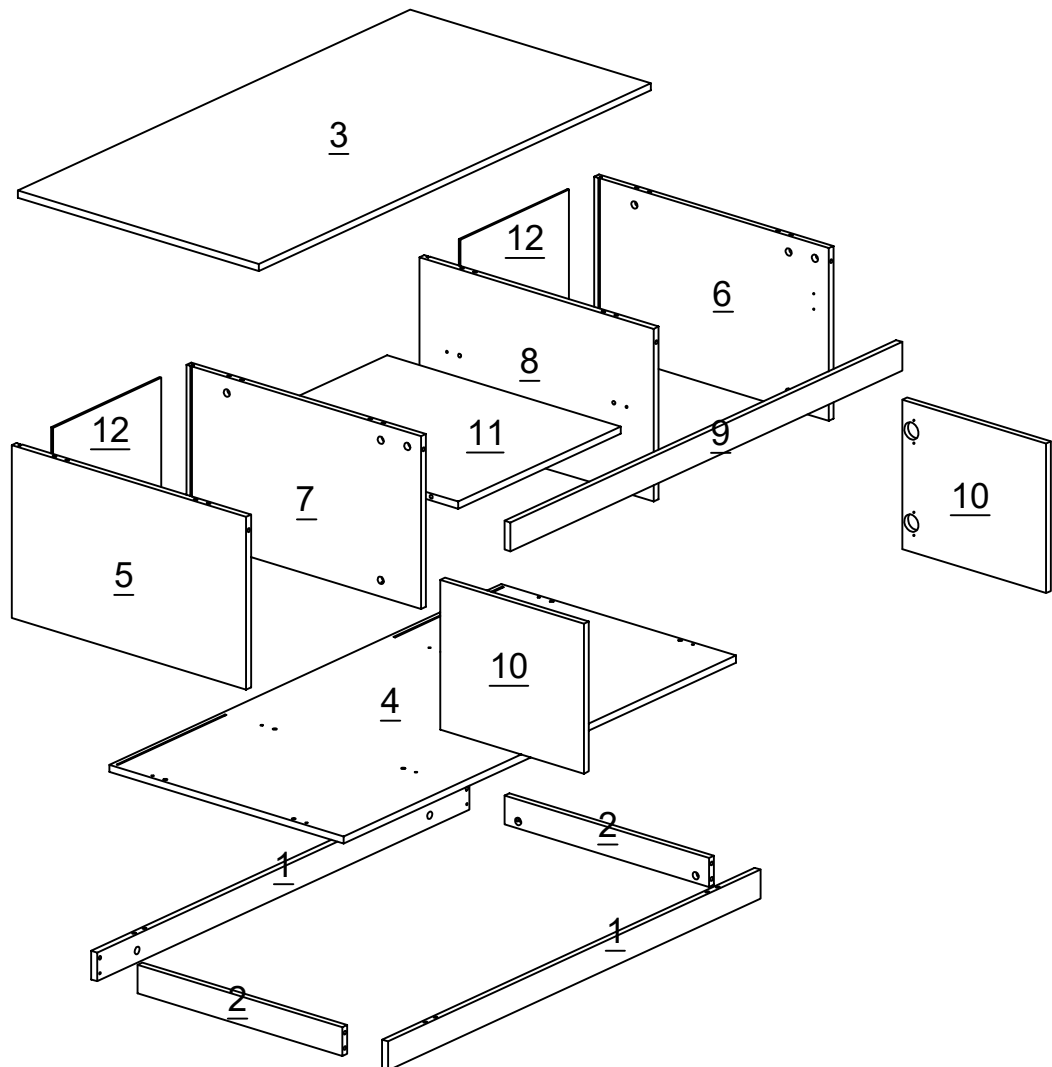
No.E  
Quantity:8Pcs  
Ground Nail



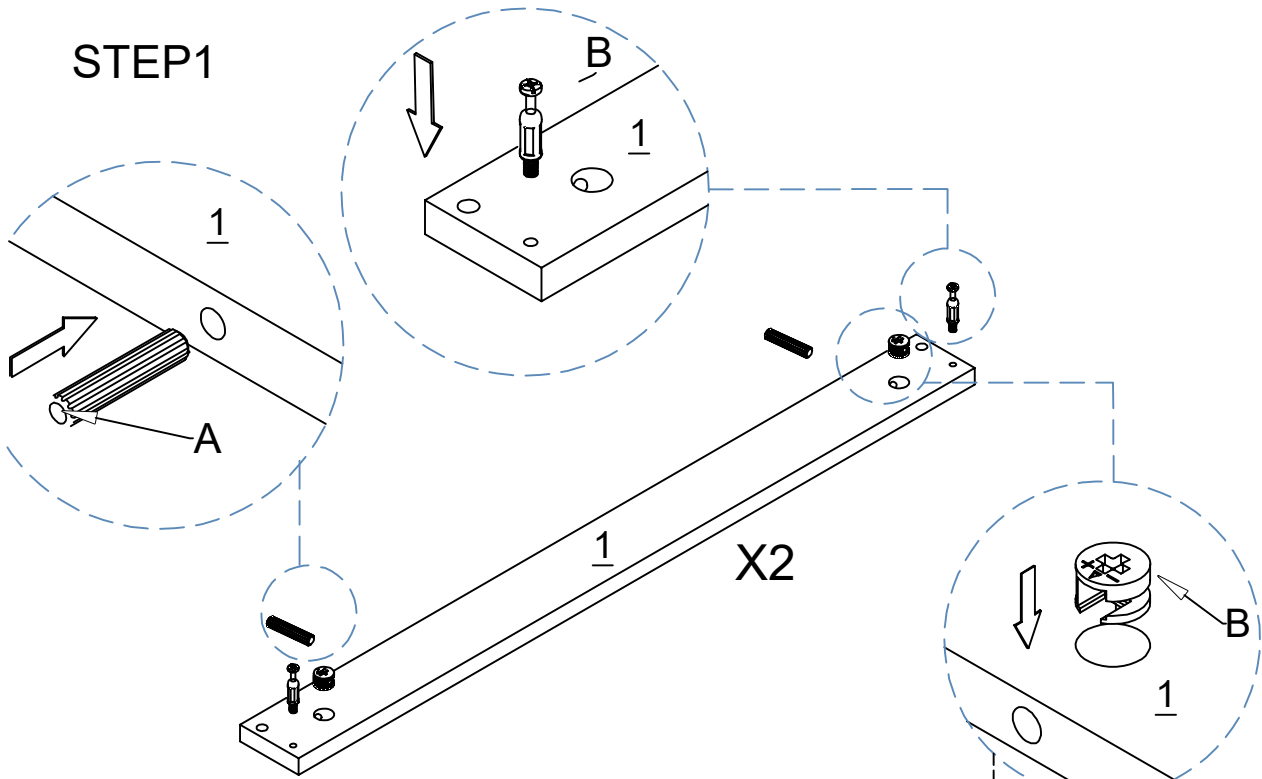
## Components Panels & Part List

Please check you have all the panels  
are listed below.

- |                         |                          |
|-------------------------|--------------------------|
| 1. Base -----x2         | 7. Centre panel_l-----x1 |
| 2. Base side -----x2    | 8. Centre panel_r-----x1 |
| 3. Top panel-----x1     | 9. Skirt panel -----x1   |
| 4. Bottom panel -----x1 | 10. Door -----x2         |
| 5. Side panel_l-----x1  | 11. Middle panel -----x1 |
| 6. Side panel_r-----x1  | 12. Back panel -----x2   |



## STEP 1



No.A  
Quantity:4Pcs  
Dowel



No.B  
Quantity:4Pcs  
Cam Bolt

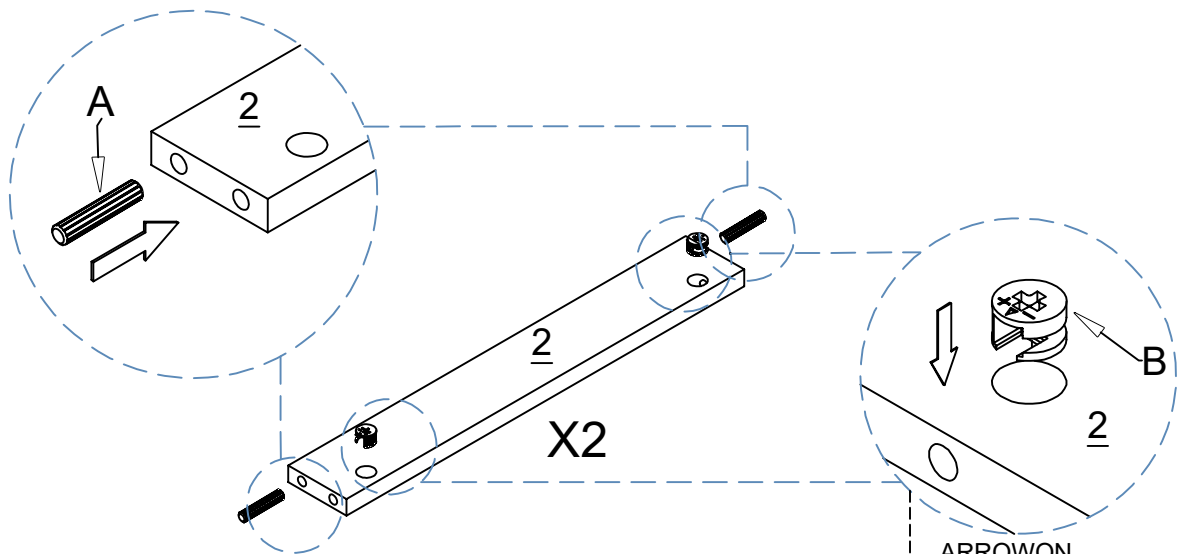


No.B  
Quantity:4Pcs  
Cam Nut



ARROW ON  
LOCKING  
NUT MUST POINT  
TOWARDS HOLE IN  
EDGE OF PANEL

## STEP 2



No.A  
Quantity:4Pcs  
Dowel

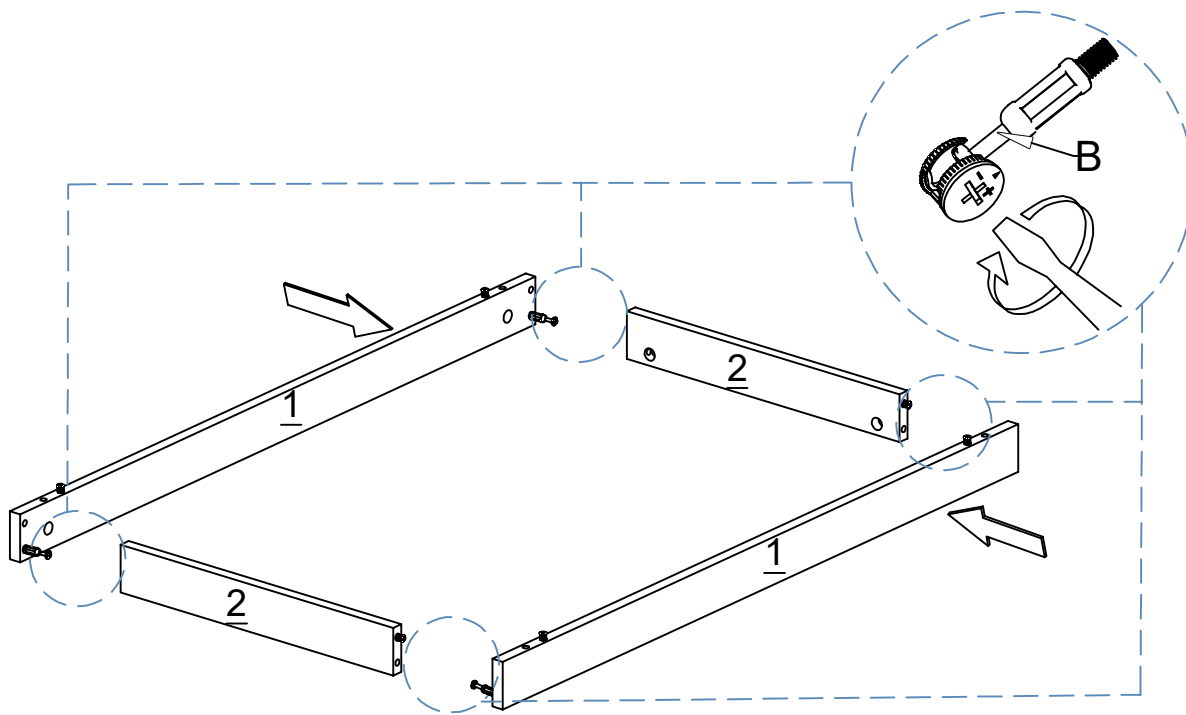


No.B  
Quantity:4Pcs  
Cam Nut

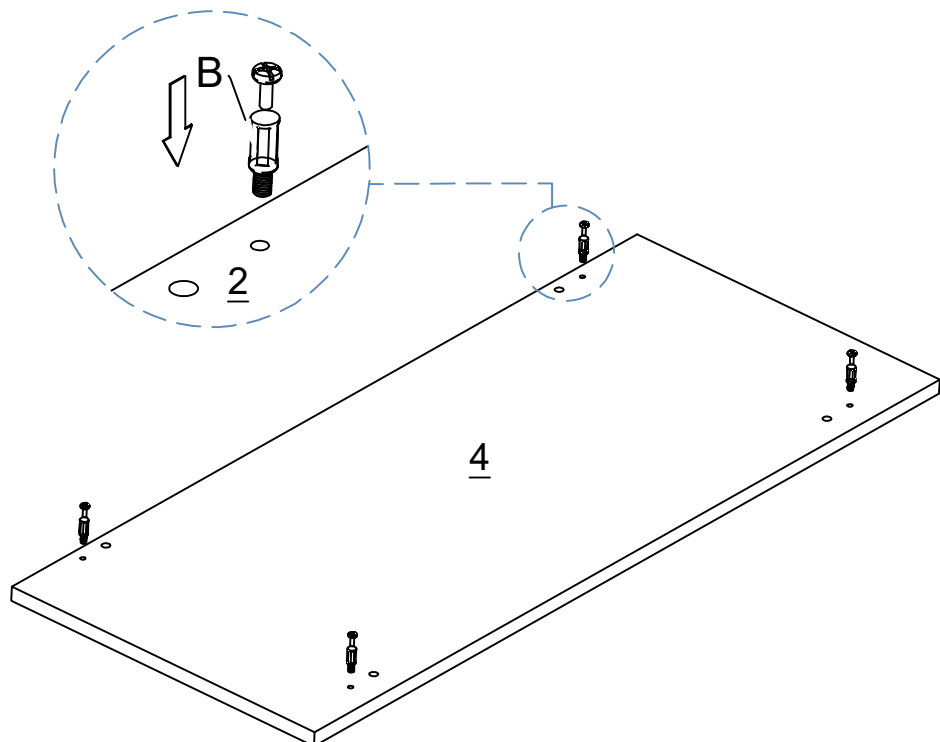


ARROW ON  
LOCKING  
NUT MUST POINT  
TOWARDS HOLE IN  
EDGE OF PANEL

### STEP3



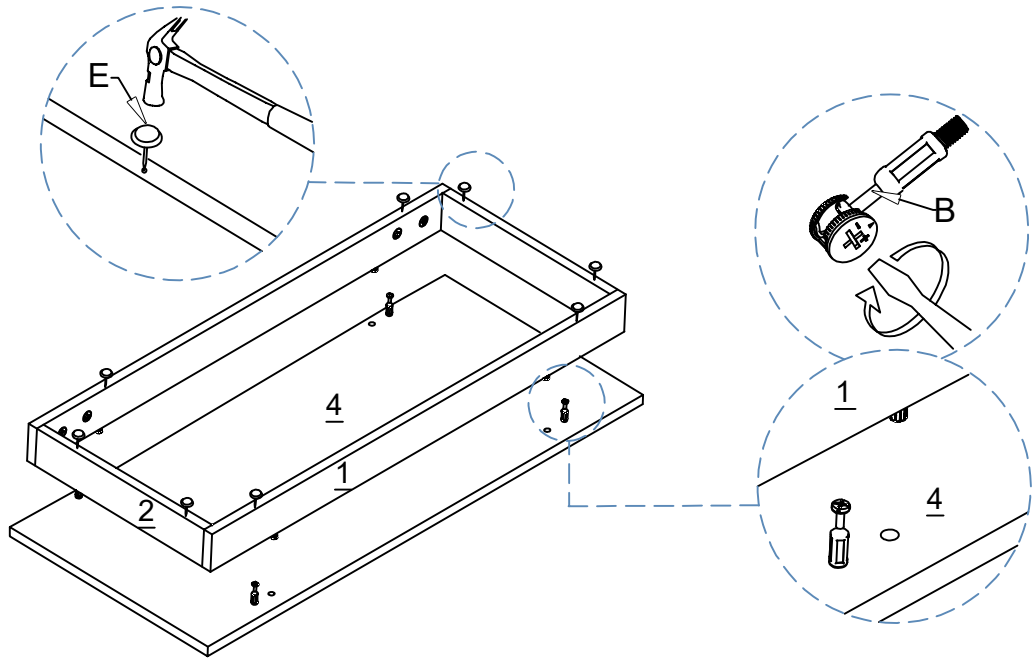
### STEP4



No.B  
Quantity:4Pcs  
Cam Bolt




# STEP5

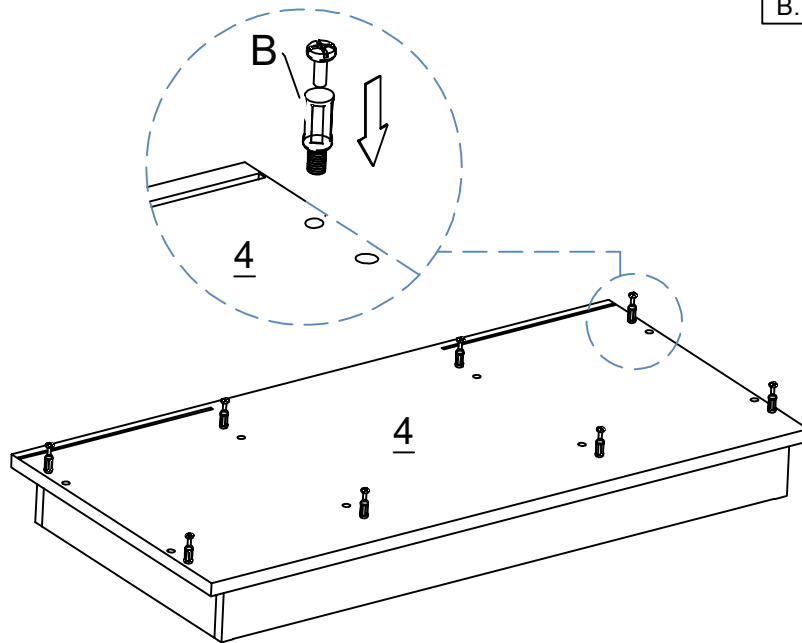


No.H  
Quantity:8Pcs  
Ground Nail



# STEP6

|                  |   |      |
|------------------|---|------|
| HARDWARE NEEDED: |   |      |
| B.               |  | 8PCS |

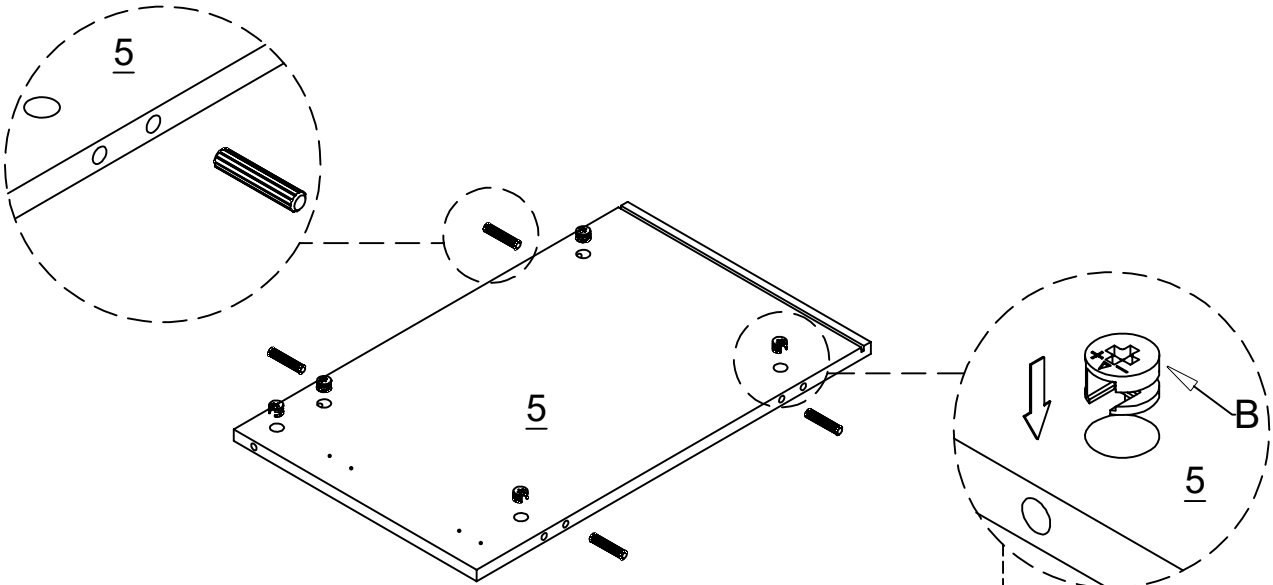


No.B  
Quantity:8Pcs  
Cam Bolt





# STEP 7



No.A  
Quantity:4Pcs  
Dowel

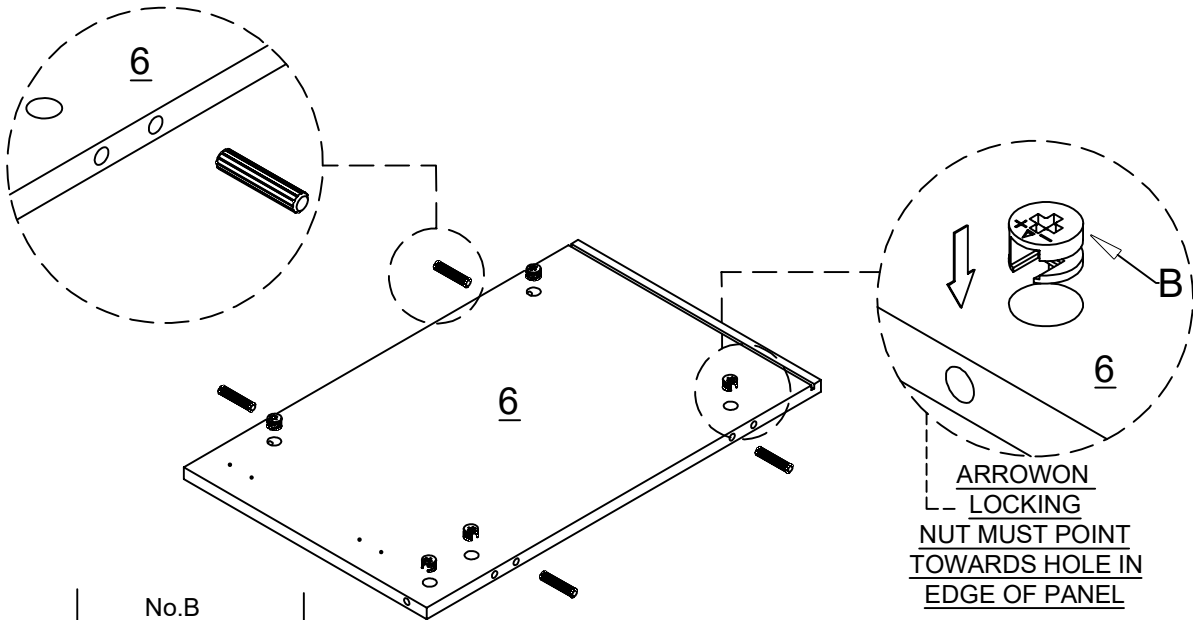


No.B  
Quantity:5Pcs  
Cam Nut



ARROW ON  
LOCKING  
NUT MUST POINT  
TOWARDS HOLE IN  
EDGE OF PANEL

# STEP 8



No.A  
Quantity:4Pcs  
Dowel

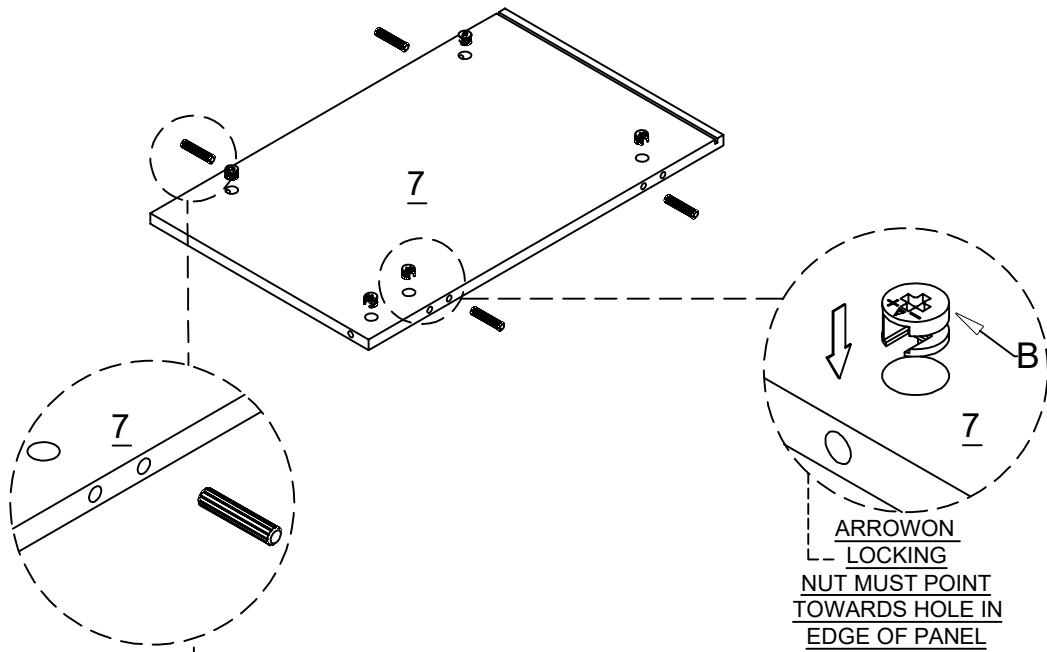


No.B  
Quantity:5Pcs  
Cam Nut

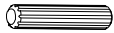


ARROW ON  
LOCKING  
NUT MUST POINT  
TOWARDS HOLE IN  
EDGE OF PANEL

# STEP 9



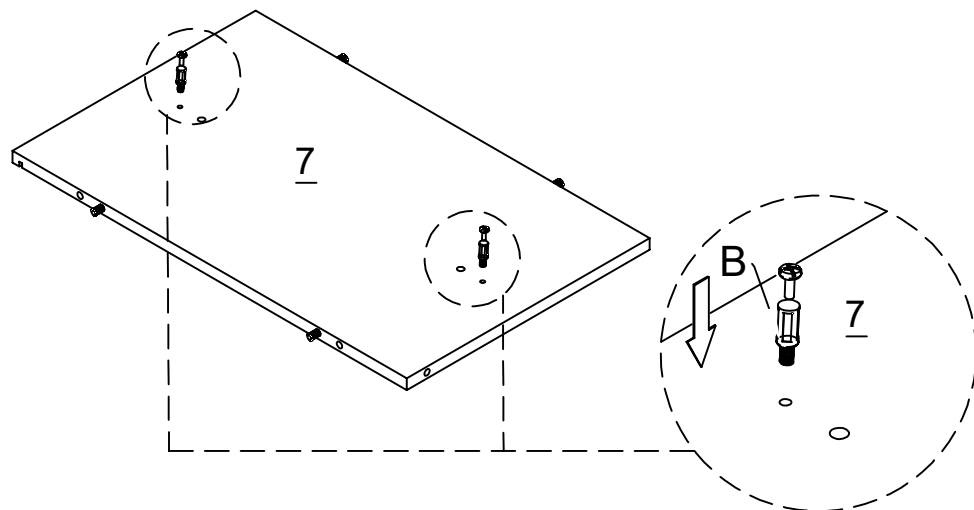
No.A  
Quantity:4Pcs  
Dowel



No.B  
Quantity:5Pcs  
Cam Nut



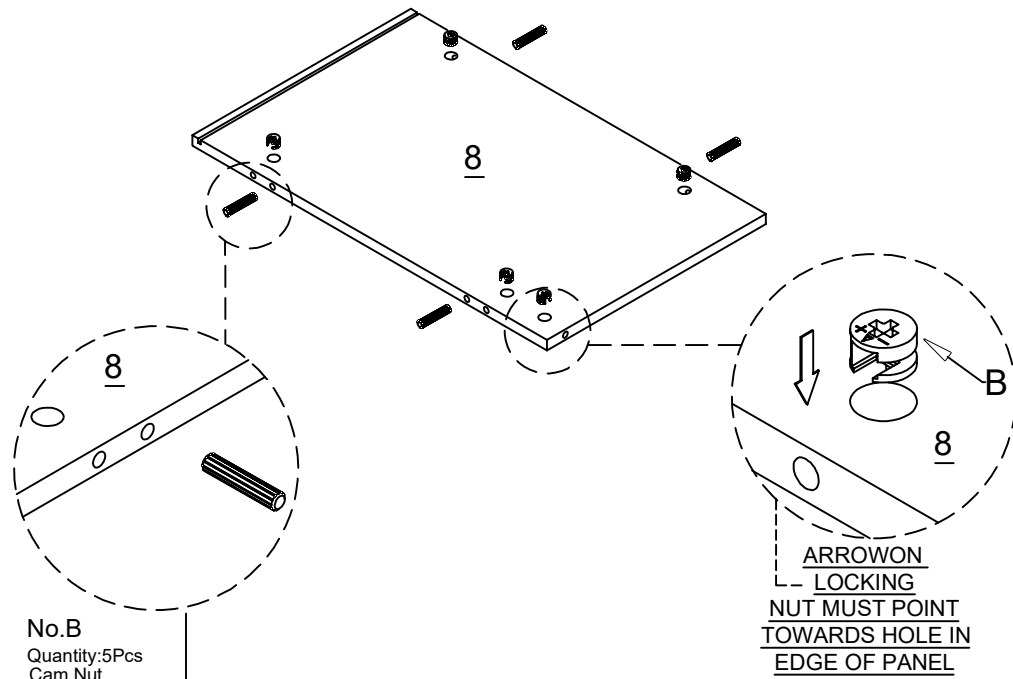
# STEP 10



No.B  
Quantity:2Pcs  
Cam Bolt



# STEP 11



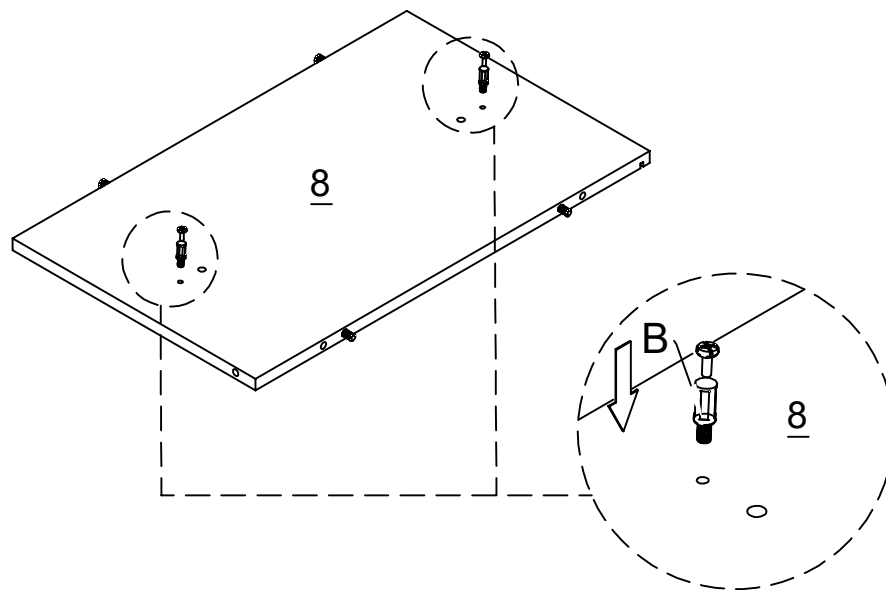
No.A  
Quantity:4Pcs  
Dowel



No.B  
Quantity:5Pcs  
Cam Nut



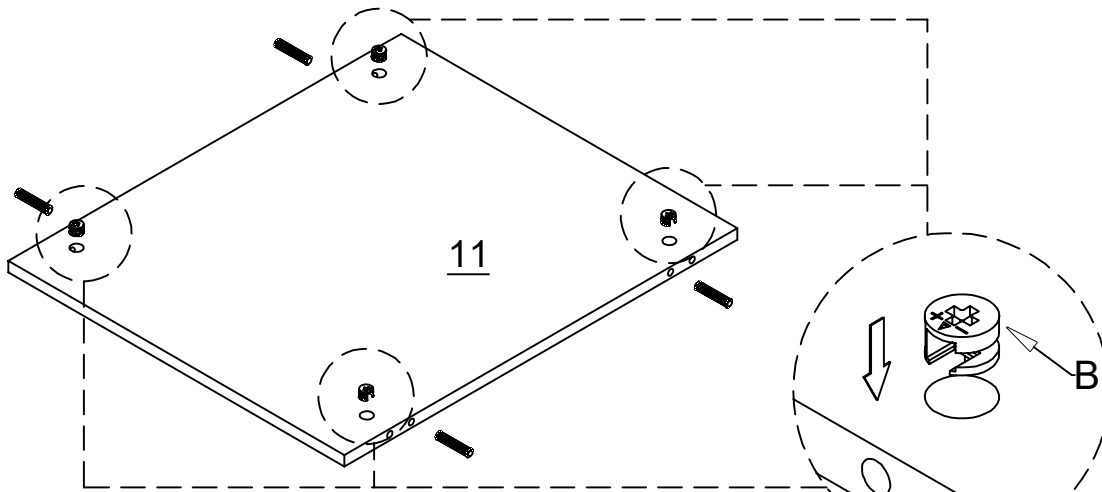
# STEP 12



No.B  
Quantity:2Pcs  
Cam Bolt



# STEP 13



No.A  
Quantity:4Pcs  
Dowel

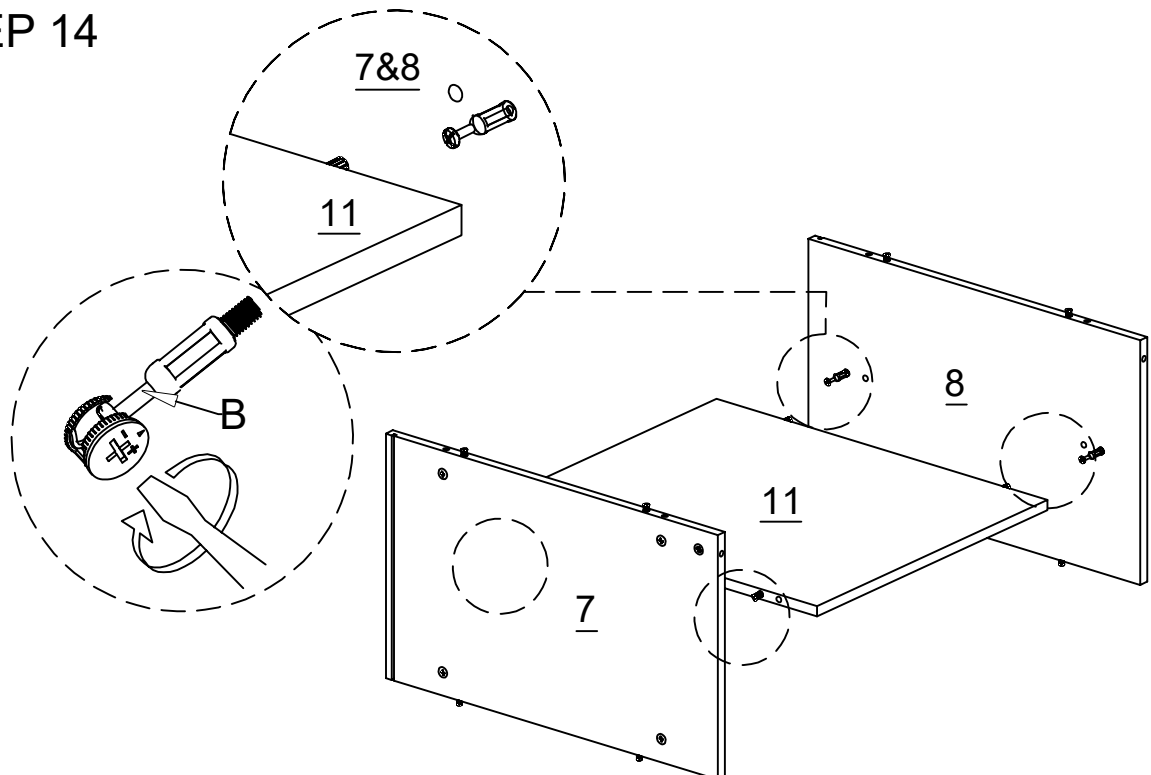


No.B  
Quantity:4Pcs  
Cam Nut

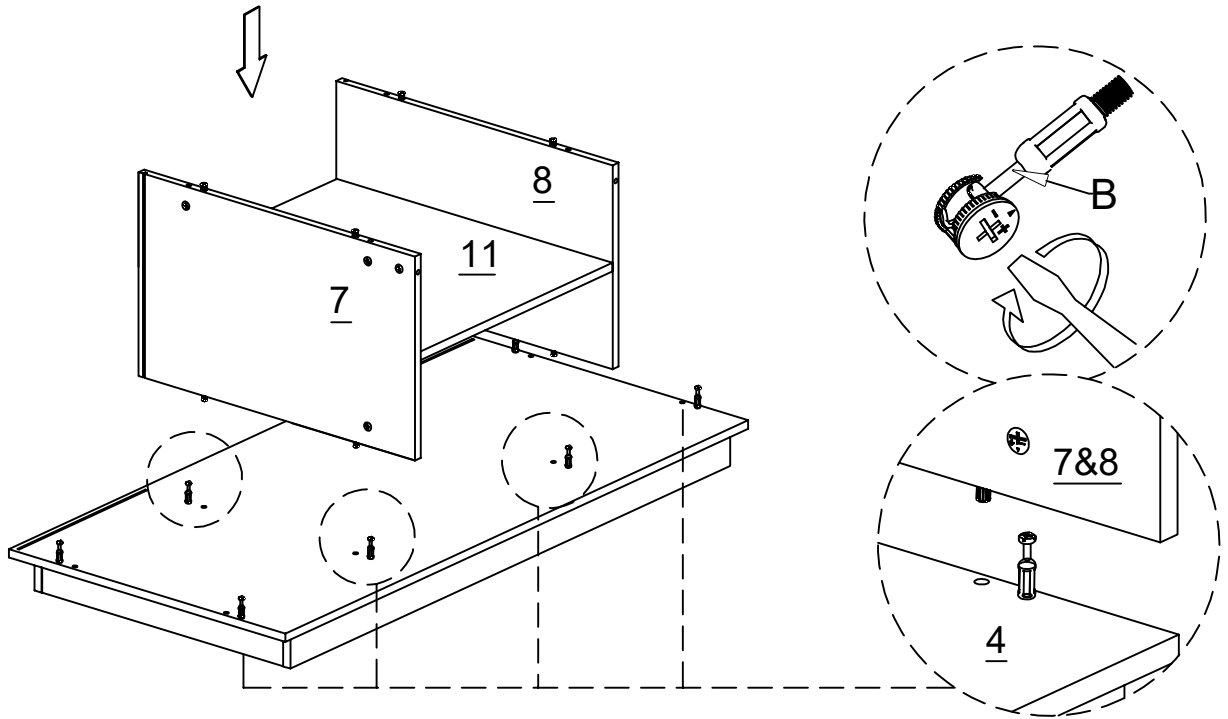


ARROW ON  
LOCKING  
NUT MUST POINT  
TOWARDS HOLE IN  
EDGE OF PANEL

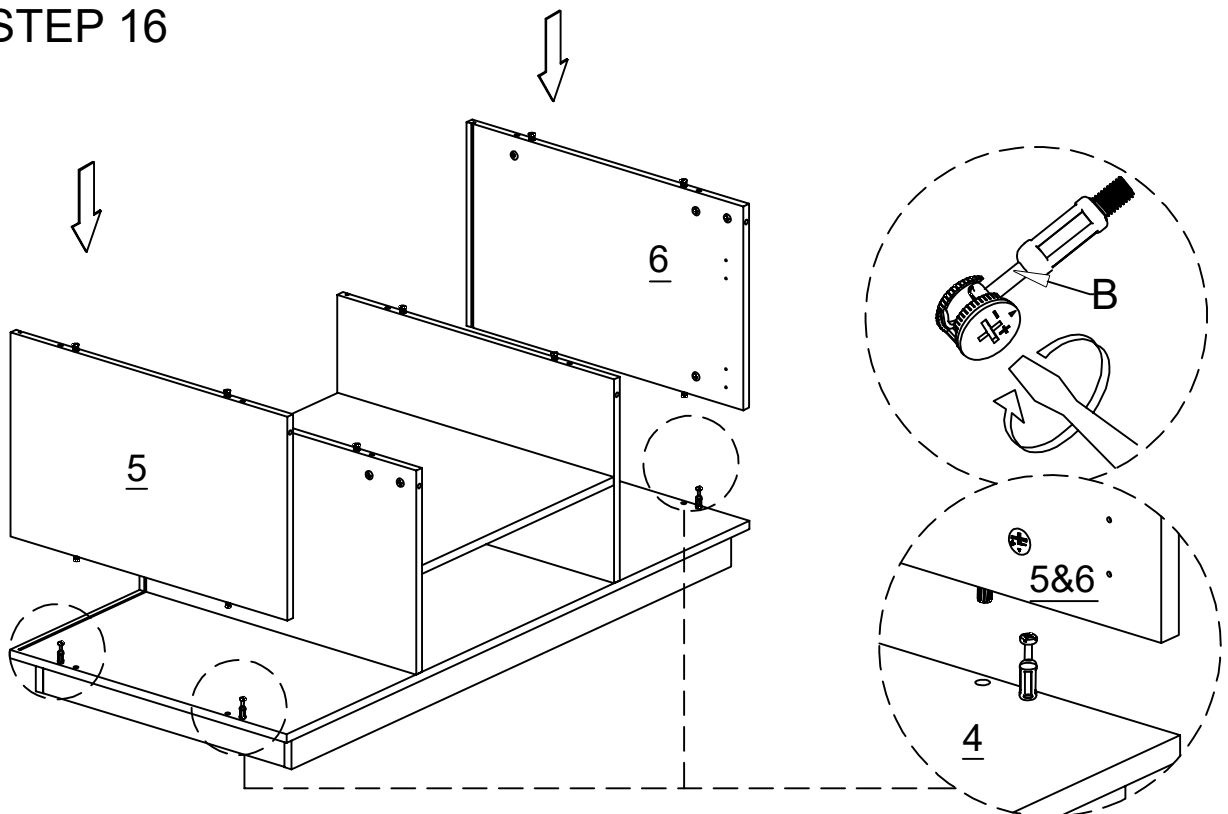
# STEP 14



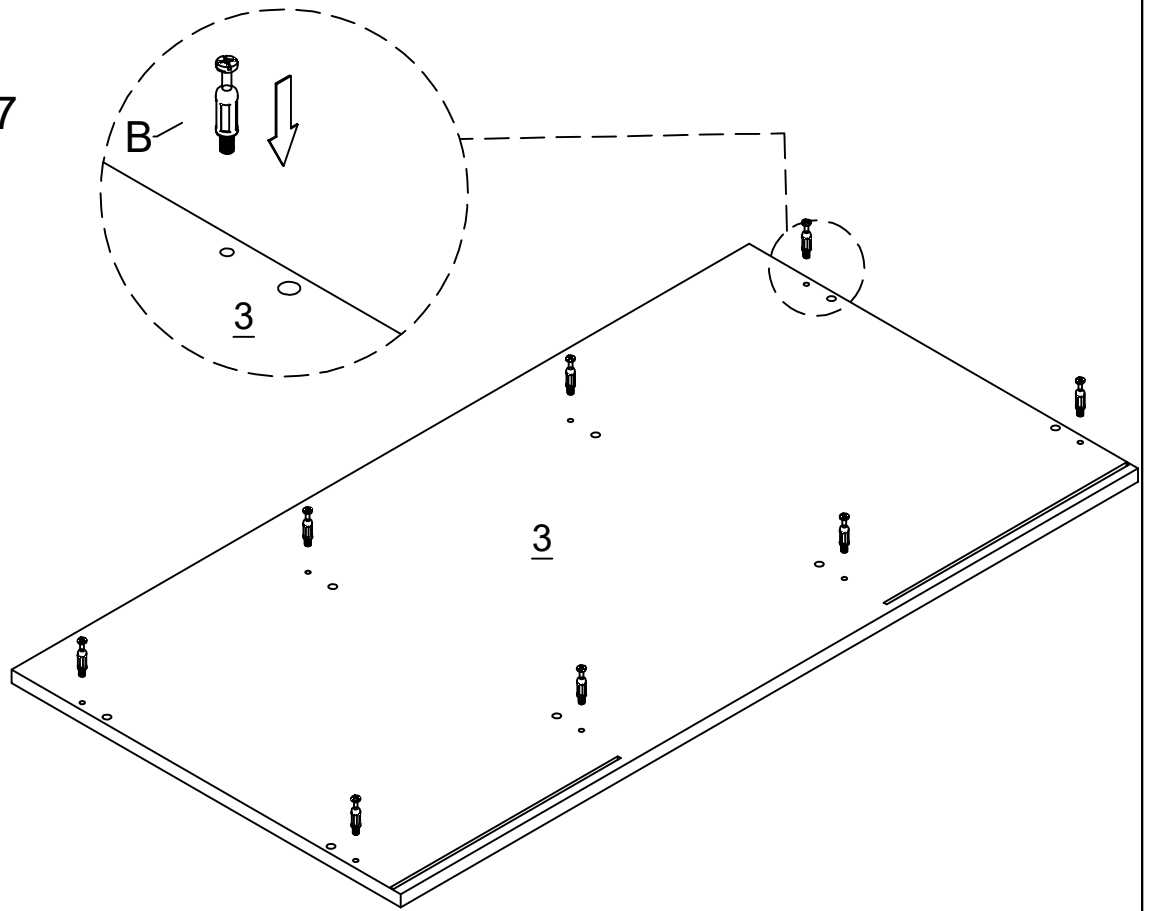
# STEP 15



# STEP 16



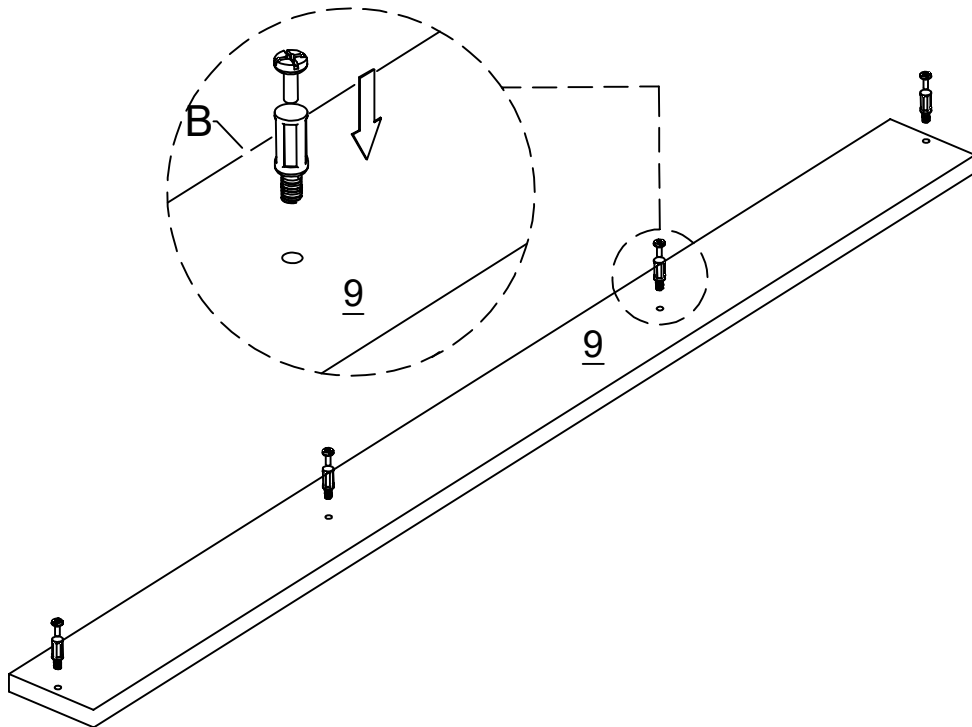
# STEP 17



No.B  
Quantity:8Pcs  
Cam Bolt



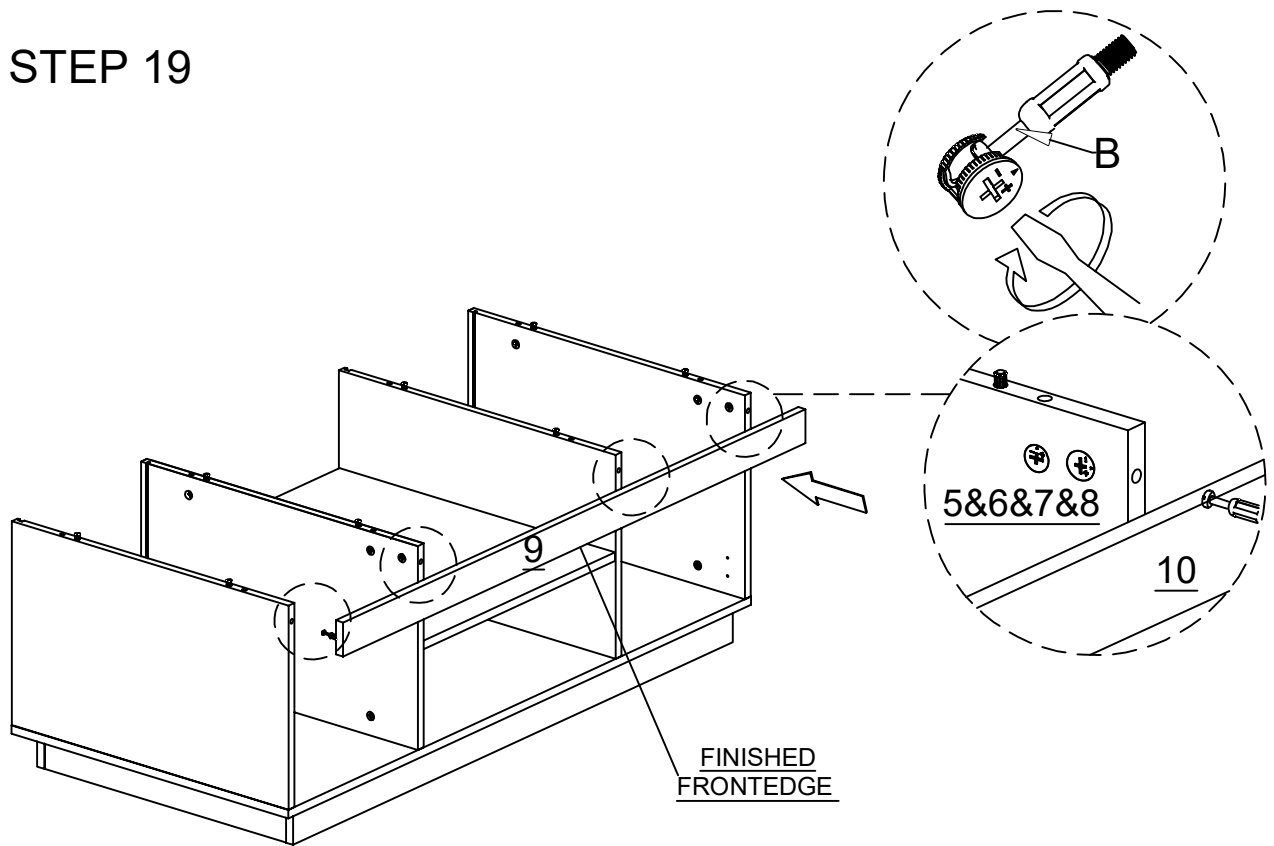
# STEP 18



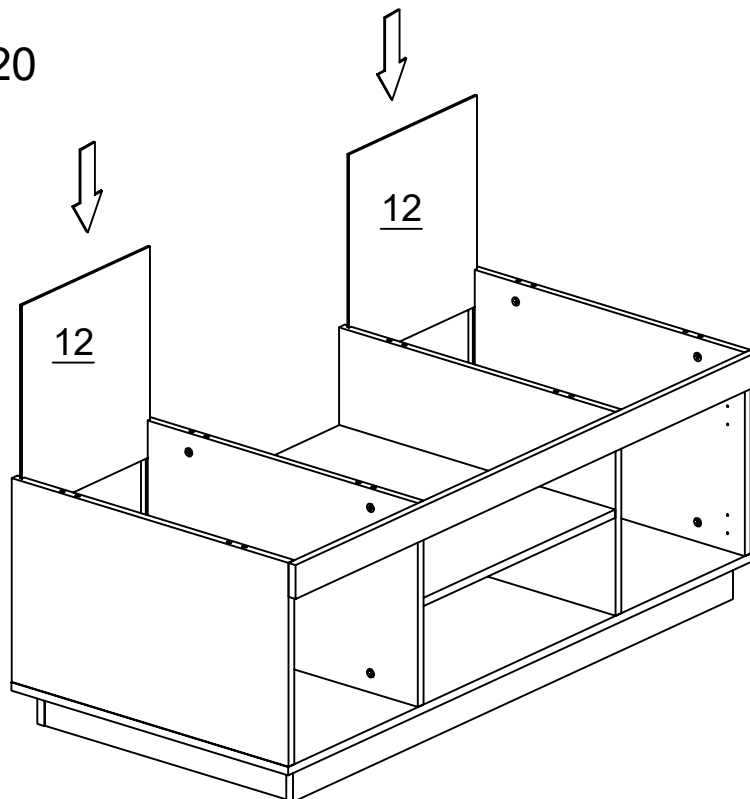
No.B  
Quantity:4Pcs  
Cam Bolt



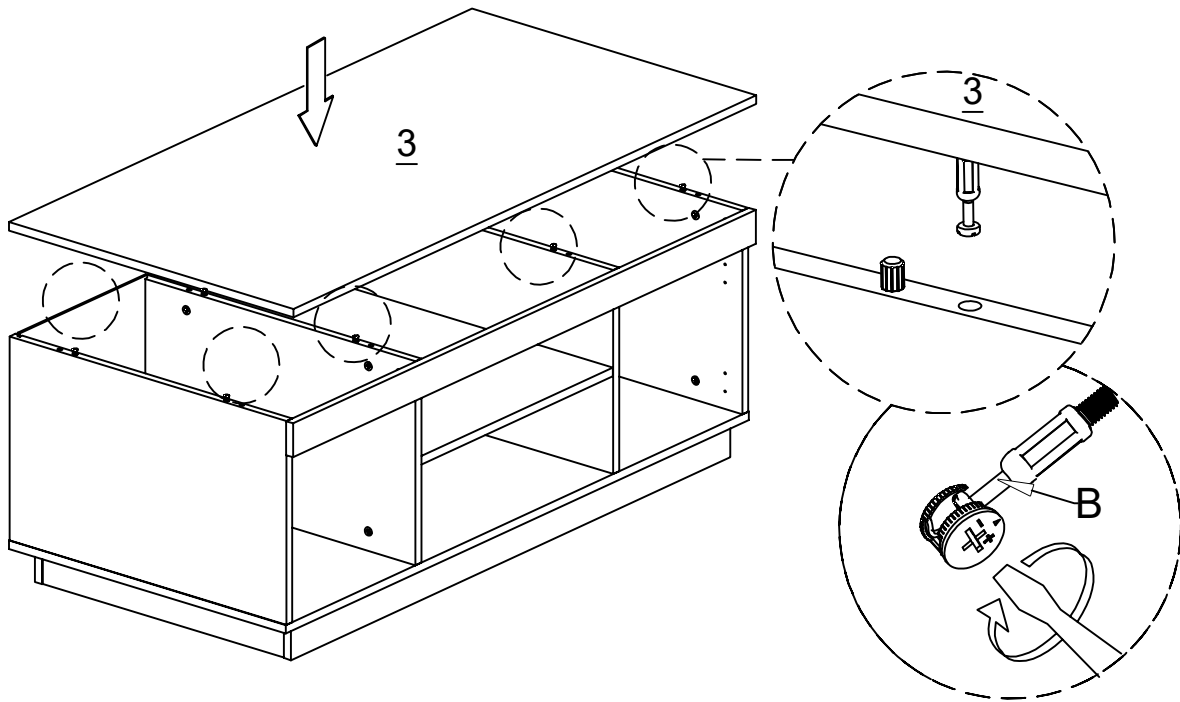
# STEP 19



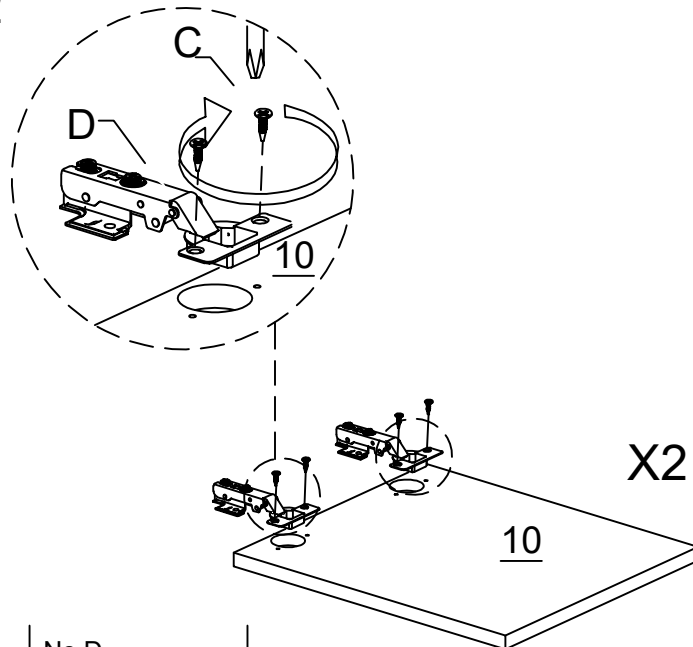
# STEP 20



# STEP 21



# STEP 22



No.C  
Quantity:8Pcs  
Screw M3.5\*14mm

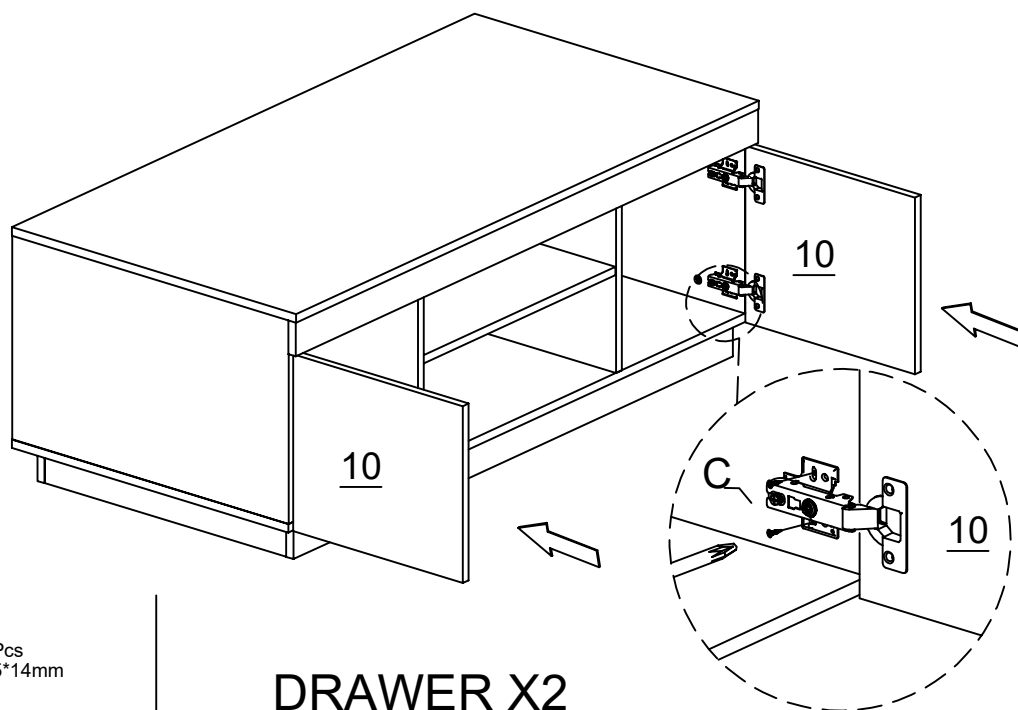


No.D  
Quantity:4Pcs  
Hinges





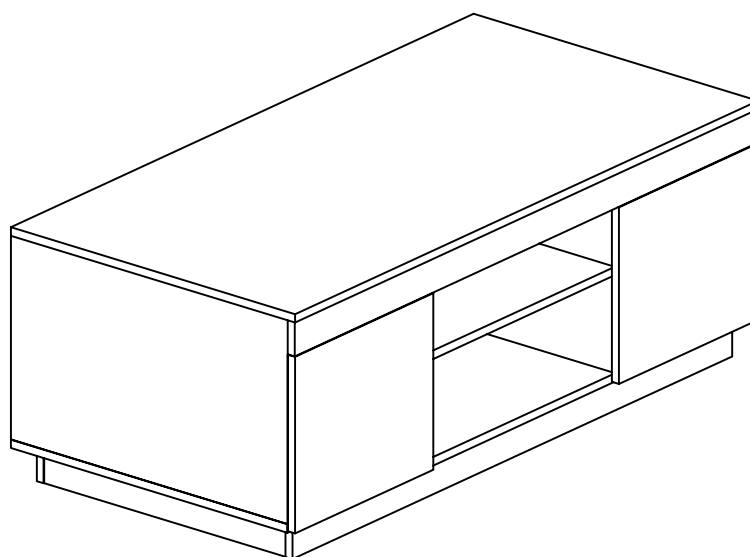
## STEP 23



No.C  
Quantity:16Pcs  
Screw M3.5\*14mm



## STEP 24



[lifely.com.au](https://lifely.com.au)

**Great Job, You're done!**

Don't forget to share how it looks in  
your space and tag us on Instagram.

[@lifelyhome#homewithlifely!](#)