

# CLEARGUARD

## BACKWASH AIR KIT

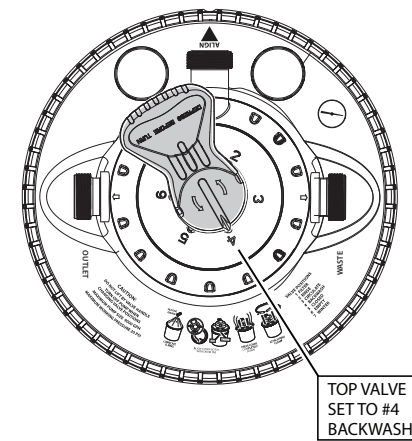
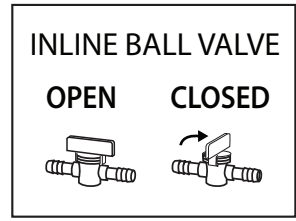
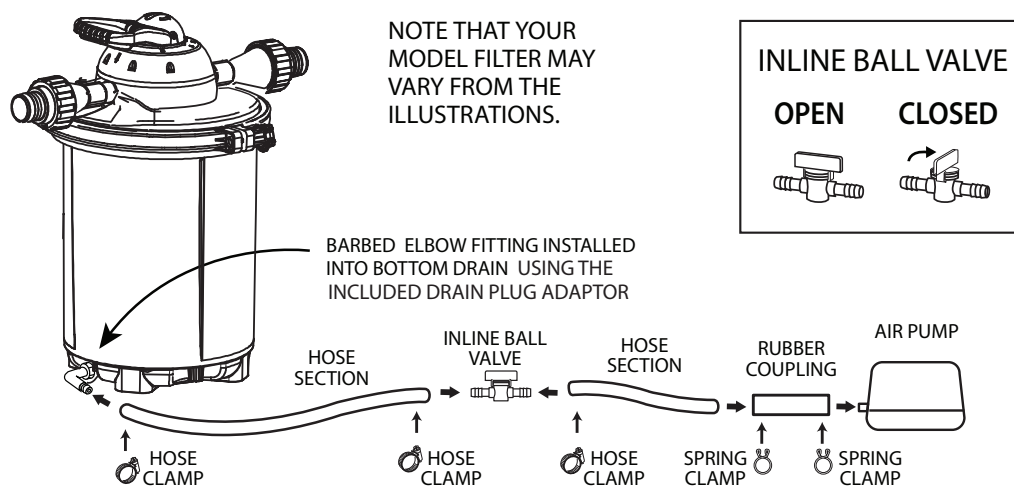
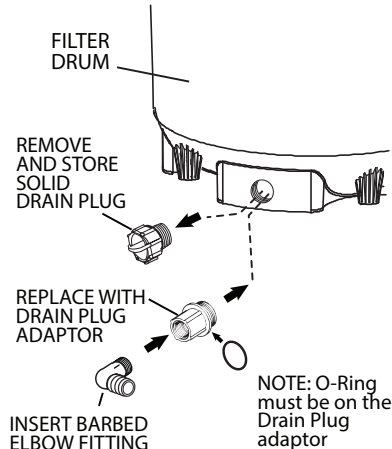
SET-UP AND OPERATING INSTRUCTIONS

ITEM #	For Clearguard filter
15660	Models 2700 & 5500
15670	Models 8000 & 16000
15675	All models - Air Pump not supplied

**SAVE THESE INSTRUCTIONS**



This Backwash Air kit uses forced air to create turbulence inside the Clearguard pressure filter to break up debris build-up that has clogged the filter media. The turbulence will release waste for more thorough backwashing. It should be used before running a backwash cycle on the pressure filter. The Kit includes a 1/2" NPT x Barbed Elbow Fitting, Drain plug adaptor with O-ring, 10' Vinyl hose, Inline Ball Valve, Hose Clamps and an Air Pump (Air-Pump supplied with items 15660 & 15670; Air Pump not included with item 15675).



### SET UP INSTRUCTIONS:

- 1) Turn off power to the water pump supplying the pressure filter and the UV clarifier if included with your filter.
- 2) Turn top valve to setting 7 WINTERIZE to allow air into the filter. Empty the water in the pressure filter by removing the drain plug from the Bottom drain in the filter drum. **IMPORTANT: Do not lose the drain plug. Store in a safe place for future use.**
- 3) Clear area around drain plug of pressure filter leaving room to turn Barbed Elbow fitting into the drain adapter.
- 4) Check that O-Ring is in place on Drain Plug Adaptor and that bottom drain threads are clean.
- 5) Then install the Drain Plug Adaptor into bottom drain opening.
- 6) Wrap the threads of the Elbow Barb Fitting with plumber's Teflon tape (Not included).
- 7) Install Elbow into drain adaptor. Hand tighten until barb is in a horizontal orientation.
- 8) Layout Tubing, Inline Ball Valve and Air Pump on location at pressure filter. Determine where the Inline Ball Valve will be best located to be readily accessible.
- 9) Cut tubing and install Inline Ball Valve using two hose clamps. **TURN HANDLE ON INLINE BALL VALVE TO CLOSED POSITION.**
- 10) Install one end of the tubing onto the Barbed Elbow fitting and secure with the remaining Hose Clamp.
- 11) Insert open end of hose into Rubber Coupling as far as it will go (approximately 7/8"), and secure with Spring Clamp.
- 12) Attach open end of Rubber Coupling to air pump and use spring clamp to secure to pump outlet. If you supply your own pump, additional adaptors may be required.

**Check that Inline Ball valve is in closed position. Pressure filter can now be refilled and operated normally. Check connections before leaving filter unattended.**

### AIR KIT BACKWASH OPERATION:

- 1) **ALWAYS REMOVE FOAM FILTER PAD BEFORE BACKWASHING.**
- 2) Close inline ball valve to air pump.
- 3) Turn off water pump supplying the pressure filter.
- 4) Turn the top valve to position #3 CIRCULATE.
- 5) Turn on air pump.
- 6) Open inline ball valve and let it run for approximately 2 minutes.
- 7) Close inline ball valve.
- 8) Turn off air pump.
- 9) Turn Pressure Filter valve to position #4 BACKWASH.
- 10) Activate water pump. Dirty water will exit from the waste hose.
- 11) Turn off water pump supplying the pressure filter.
- 12) Turn Pressure Filter valve to position #2 RINSE and run water pump for a 20 - 30 seconds to clear debris in top valve.
- 13) Turn off water pump supplying the pressure filter.
- 14) If needed, repeat steps 2 - 12. Multiple backwash cycles may be required.
- 15) To resume filtration, verify that inline ball valve is in closed position, turn Air Pump off then turn Pressure Filter top valve to position #1 FILTER and turn on water pump.



Subscribe to our YouTube Channel and view all of our product videos.