



awning the Italian way



HOUSE OF  
CANVAS

PRODUCTS

*Established in 1976*

**Upgrade to Shade**

**HOUSEOFCANVAS.COM**

House of Canvas Products  
3 Cleopatra Drive,  
Ottawa, ON Canada  
613-723-0056  
SHOWROOM@HOUSEOFCANVAS.COM

## Tende a racci con cassoneTto

Cassette folding arm awnings  
Store coffre  
Hülsen- und Kassettenmarkisen  
Toldos de brazos extensibles con cofre

# 2040



houseofcanvas.com

*Established in 1976*



awning the Italian way

# 2040



2040 è una tenda a bracci estensibili su barra quadra 40 mm in acciaio zincato e verniciato con cassonetto a scomparsa parziale e con bracci a doppio cavetto inguainato o a catena inox. Questo modello viene fornito di un supporto braccio basculante brevettato che consente di regolare la tenda senza dover inclinare il cassonetto.



2040 is a folding arm awning on a 40 mm zincated and painted steel square bar with half cassette and double covered cables or stainless chain arms. This model includes a patented tipping system which allows to adjust the awning's inclination without acting on the cassette itself.



2040 est un store banne à bras extensibles sur barre carrée 40 mm en acier zingué et laquée, avec bras à double câble gainé ou chaîne inox avec demie coffre. Le support bras à basculement breveté permet le réglage de l'inclinaison du store sans modifier la position du coffre.



2040: Hülsenmarkise, 40 mm stahlverzinktes und lackiertes Tragrohr, Doppelseil- oder Ketten-Arme. Dieses Modell ist mit einer patentierten Kipparmkonsole ausgerüstet, welches eine Einstellung erlaubt ohne dabei die Kasette neigen zu müssen. Wand- oder Deckenmontage ist möglich, sowie auch Dachmontage.



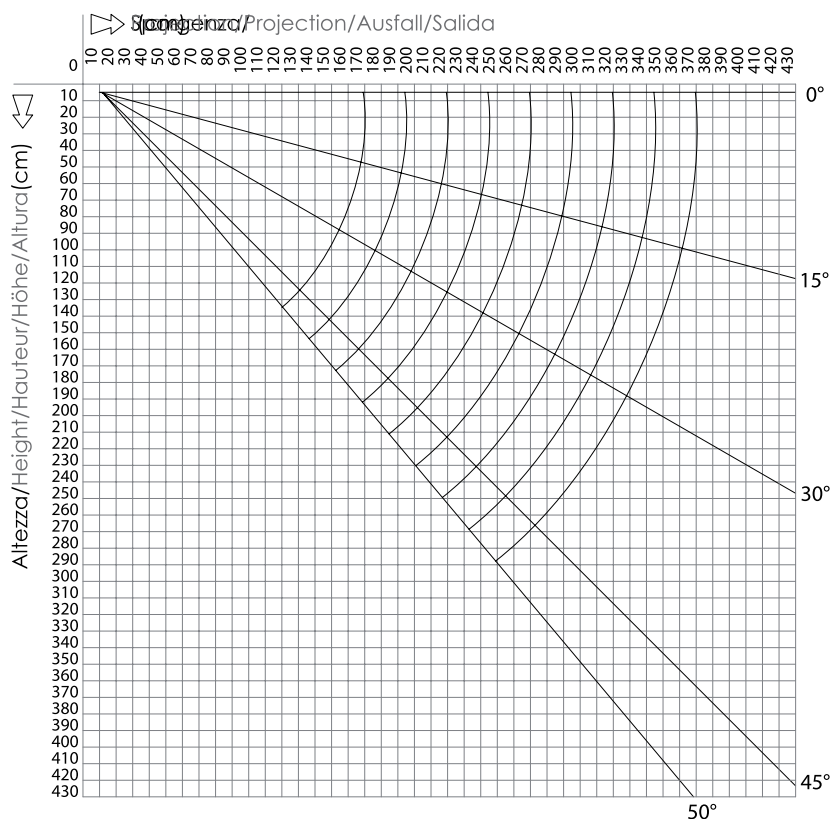
2040 es un toldo con brazos extensibles sobre barra cuadrada 40 mm en acero galvanizado y lacado con cofre opcional y con brazos con doble cable enfundado o cadena acero inox. Este modelo viene con un soporte brazo basculante patentado que permite regular el toldo sin tener que inclinar el cofre.

# 2040

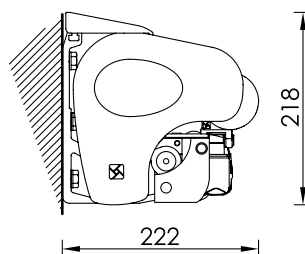
## sc Heda Tecnica /technical sheet



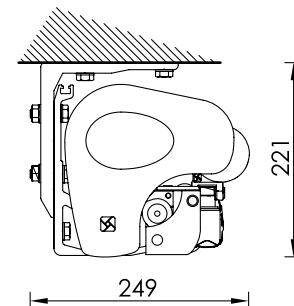
### Diagramma di copertura - Installazione parete e soffitto covering diagram - Wall and ceiling installation



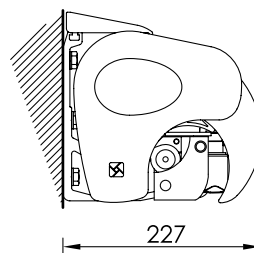
Montaggio a parete  
Wall installation



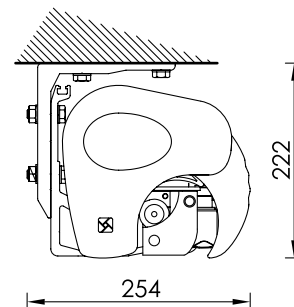
Montaggio a soffitto  
Ceiling installation



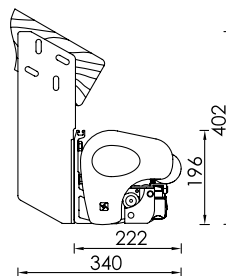
Montaggio a parete  
con terminale 31592  
Wall installation with  
31592 front bar



Montaggio a soffitto  
con terminale 31592  
Ceiling installation  
with 31592 front bar



Montaggio sottotetto  
Under-roof installation



### Dimensioni massime



Ingombri minimi della tenda finita - 1 coppia bracci  
Minimum awning encumbrances - 1 pair arms  
Encombrents minimum du store fini - 1 pair bras  
Mindestabmessungen der Markise - 1 Paar Gelenkarme  
Tamaño mínimo del toldo - 1 par de brazos

Sporgenza Projection Avancée Ausladung Salida	Larghezza min. Min. Width Largeur min. Breite min. Línea mín.
160	205
185	230
210	255
235	280
260	305
285	330
310	355
335	380
360	405

Tutte le misure dei montaggi sono espresse in mm

Alle Massen in den Montagschemen verstehen sich in mm \ Todos las dimensiones están en mm accesorios