

PRE-PICKED ASSORTMENTS

Bentley Seed Co.

BENTLEY
SEED CO.

ASSORTMENT TYPES

A=Assorted | V=Vegetable | H=Herb | VH=Vegetable/Herb | F=Flower | S=Southern

<i>Item #</i>	<i>Description</i>	<i>Page #</i>
2000-A	2000 pre-priced (\$1.99) packets of assorted vegetable, flower and herb seeds.	2
2000-VH	2000 pre-priced (\$1.99) packets of assorted vegetable and herb seeds.	3
2000-S	2000 pre-priced (\$1.99) packets of assorted Southern vegetable, flower and herb seeds.	4
1000-A	1000 pre-priced (\$1.99) packets of assorted vegetable, flower and herb seeds.	5
1000-VH	1000 pre-priced (\$1.99) packets of assorted vegetable and herb seeds.	6
1000-S	1000 pre-priced (\$1.99) packets of assorted Southern vegetable, flower and herb seeds.	7
500-A	500 pre-priced (\$1.99) packets of assorted vegetable, flower and herb seeds.	8
500-VH	500 pre-priced (\$1.99) packets of assorted vegetable and herb seeds.	8
500-S	500 pre-priced (\$1.99) packets of assorted Southern vegetable, flower and herb seeds.	9
500-F	500 pre-priced (\$1.99) packets of assorted flower seeds.	9
250-V	250 pre-priced (\$1.99) packets of assorted vegetable seeds.	10
250-H	250 pre-priced (\$1.99) packets of assorted herb seeds.	10
250-F	250 pre-priced (\$1.99) packets of assorted flower seeds.	10

*We Grow
Good
Things*

2,000-A (Assorted)

VEGETABLES

Bean-Golden Wax
 Bean-Henderson's Bush Lima
 Bean-Kentucky Wonder (Green Pole)
 Bean-Provider (Green Bush)
 Beet-Chioggia
 Beet-Detroit Dark Red
 Broccoli-Green Sprouting Calabrese
 Brussel Sprouts-Long Island Improved
 Cabbage-Copenhagen
 Cabbage-Late Flat Dutch
 Cabbage-Red Acre
 Cantaloupe-Hale's Best Jumbo
 Carrot-Danvers 126 Half Long
 Carrot-Nantes
 Cauliflower-Snowball Y Improved
 Collards-Georgia Southern
 Corn-Golden Bantam 8 Row
 Corn-Pearls & Gold
 Cucumber-Boston Pickling
 Cucumber-Marketmore 76
 Eggplant-Black Beauty
 Endive-Broadleaf Batavian
 Fennel-Florence
 Kale-Lacianto
 Leeks-American Flag
 Lettuce-Buttercrunch
 Lettuce-Mesclun Mix (Red & Green)
 Lettuce-Paris Island Cos Romaine
 Lettuce-Red Salad Bowl
 Lettuce-Simpson's Curled
 Mustard-Southern Giant Curled
 Okra-Clemson Spineless
 Onion-Evergreen Bunching
 Onion-Red Danvers
 Onion-Yellow Sweet Spanish
 Pea-Little Marvel
 Pea-Oregon Sugar Pod II
 Pea-Sugar Ann Snap
 Pepper-California Wonder Pepper (Sweet)
 Pepper-Cayenne Long Red Thin (Hot)
 Pepper-Jalapeno (Hot)
 Pumpkin-Jack O' Lantern
 Radish-Cherry Belle
 Radish-French Breakfast
 Radish-Sparkler
 Spinach-Bloomsdale
 Squash-Acorn Table Queen
 Squash-Buttercup Burgess
 Squash-Butternut Waltham
 Squash-Early Summer Crookneck

Squash-Zucchini Black Beauty
 Swiss Chard-Fordhook Giant
 Tomato-Ace 55
 Tomato-Beefsteak
 Tomato-Brandywine
 Tomato-Large Red Cherry
 Tomato-Roma
 Turnip-Purple Top Globe
 Turnip-Seven Top
 Watermelon-Crimson Sweet
 Watermelon-Sugar Baby

HERBS

Arugula-Rouquette
 Basil-Genovese (Sweet)
 Basil-Purple Dark Opal
 Caraway
 Catnip
 Chamomile-German
 Chives
 Coriander-Slow Bolting
 Cress-Curled Garden
 Dill-Mammoth Long Island
 Garlic Chives
 Mint-Peppermint
 Oregano
 Parsley-Moss Curled
 Parsley-Plain Italian
 Sage-Broadleaf
 Summer Savory
 Sweet Marjoram
 Thyme

FLOWERS

Alyssum-Carpet of Snow-Lobularia maritima
 Annual Mix-Wildflowers
 Aster Crego-Mixed Colors-
 Callistephus chinensis
 Baby Blue Eyes-Nemophila menziesii
 Baby Snapdragon-Mixed-Linaria maroccana
 Baby's Breath-Covent Garden-
 Gypsophila elegans
 Bachelor's Button-Mixed-Centaurea cyanus
 Bee Feed Mix-Wildflowers
 Bird & Butterfly Mix-Wildflowers
 Bird's Eyes-Gilia tricolor
 Black Eyed Susan-Rudbeckia hirta
 Blanketflower-Galardia pulchella
 Blue Flax-Linum lewisii
 Butterfly Feed-Milkweed Mix

Calendula-Pacific Beauty Mixed Colors-
 Calendula officinalis
 Catchfly-Silene armeria
 Chinese Houses-Collinsia heterophylla
 Coreopsis-Dwarf Plains-Coreopsis tinctoria
 Coreopsis-Lance Leaf-Coreopsis lanceolata
 Cosmos Sensation-Mixed Colors-
 Cosmos bipinnatus
 Cut Flower Mix-Mixed Annuals
 Dianthus-Mixed Colors Pinks-
 Dianthus chinensis
 Evening Primrose-Oenothera lamarckiana
 Forget Me Not-Firmament-
 Cynoglossum amabile
 Foxglove-Digitalis purpurea
 Garland Chrysanthemum-
 Chrysanthemum coronarium
 Gourds-Ornamental Mixed
 Hollyhock-Chater's Double Mixed-Alcea rosea
 Larkspur-Giant Imperial Mixed Colors-
 Delphinium consolida
 Low Maintenance Mix-Wildflowers
 Lupine-Blue-Lupinus perennis
 Lupine-White-Lupinus albus
 Marigold-Crackerjack Mixed-Tagetes erecta
 Marigold-Dwarf French Mixed-Tagetes patula
 Morning Glory Mixed Colors-Ipomoea
 Nasturtium-Jewel Mixed Colors-
 Tropaeolum majus
 Painted Daisy-Chrysanthemum carinatum
 Perennial Mix-Wildflowers
 Phlox Drummond-Mixed Colors-
 Phlox drummondii
 Poppy-Shirley Mixed Colors-Papaver rhoeas
 Portulaca-Mixed Colors-Portulaca grandiflora
 Purple Coneflower-Echinacea purpurea
 Rose Mallow-Lavatera trimestris
 Scarlet Flax-Linum grandiflorum rubrum
 Shade Mix-Wildflowers
 Shasta Daisy-Chrysanthemum maximum
 Sunny Mix-Wildflowers
 Sunflower-Mammoth-Helianthus annuus
 Sunflower-Sungold Dwarf-Helianthus annuus
 Sweet Peas-Royal Family Mixed Colors-
 Lathyrus odoratus
 Sweet William-Tall Single Mix-
 Dianthus barbatus
 Texas Bluebonnet-Lupinus texensis
 Zinnia-California Giant Mixed-Zinnia elegans
 Zinnia-Lilliput Mixed Colors-Zinnia elegans

2,000-VH (Vegetable & Herb)

VEGETABLES

Bean-Golden Wax
 Bean-Henderson's Bush Lima
 Bean-Kentucky Wonder (Green Pole)
 Bean-Provider (Green Bush)
 Beet-Chioggia
 Beet-Detroit Dark Red
 Broccoli-Green Sprouting Calabrese
 Brussel Sprouts-Long Island Improved
 Cabbage-Copenhagen
 Cabbage-Late Flat Dutch
 Cabbage-Red Acre
 Cantaloupe-Hale's Best Jumbo
 Carrot-Danvers 126 Half Long
 Carrot-Nantes
 Cauliflower-Snowball Y Improved
 Collards-Georiga Southern
 Corn-Golden Bantam 8 Row
 Corn-Pearls & Gold
 Cucumber-Boston Pickling
 Cucumber-Marketmore 76
 Eggplant-Black Beauty
 Endive-Broadleaf Batavian
 Fennel-Florence
 Gourds-Ornamental Mixed
 Kale-Lacianto
 Leeks-American Flag
 Lettuce-Buttercrunch
 Lettuce-Mesclun Mix (Red & Green)
 Lettuce-Paris Island Cos Romaine
 Lettuce-Red Salad Bowl
 Lettuce-Simpson's Curled

Mustard-Southern Giant Curled
 Okra-Clemson Spineless
 Onion-Evergreen Bunching
 Onion-Red Danvers
 Onion-Yellow Sweet Spanish
 Pea-Little Marvel
 Pea-Oregon Sugar Pod II
 Pea-Sugar Ann Snap
 Pepper-California Wonder Pepper (Sweet)
 Pepper-Cayenne Long Red Thin (Hot)
 Pepper-Jalapeno (Hot)
 Pumpkin-Jack O' Lantern
 Radish-Cherry Belle
 Radish-French Breakfast
 Radish-Sparkler
 Spinach-Bloomsdale
 Squash-Acorn Table Queen
 Squash-Buttercup Burgess
 Squash-Butternut Waltham
 Squash-Early Summer Crookneck
 Squash-Zucchini Black Beauty
 Swiss Chard-Fordhook Giant
 Tomato-Ace 55
 Tomato-Beefsteak
 Tomato-Brandywine
 Tomato-Large Red Cherry
 Tomato-Roma
 Turnip-Purple Top Globe
 Turnip-Seven Top
 Watermelon-Crimson Sweet
 Watermelon-Sugar Baby

HERBS

Arugula-Rouquette
 Basil-Genovese (Sweet)
 Basil-Purple Dark Opal
 Caraway
 Catnip
 Chamomile-German
 Chives
 Coriander-Slow Bolting
 Cress-Curled Garden
 Dill-Mammoth Long Island
 Garlic Chives
 Mint-Peppermint
 Oregano
 Parsley-Moss Curled
 Parsley-Plain Italian
 Sage-Broadleaf
 Summer Savory
 Sweet Marjoram
 Thyme

2,000+ PACKET WIRE SPINNER RACK

Overall Dimensions:
28"W x 28"D x 80"H

- **Wire Frame & Trays**
- **Available in 3 Assortments**
 - Assorted
 - Vegetable / Herb
 - Southern



2,000-S (Southern Mix)

VEGETABLES

Bean-Golden Wax
 Bean-Henderson's Bush Lima
 Bean-Kentucky Wonder (Green Pole)
 Bean-Provider (Green Bush)
 Beet-Chioggia
 Beet-Detroit Dark Red
 Broccoli-Green Sprouting Calabrese
 Brussel Sprouts-Long Island Improved
 Cabbage-Copenhagen
 Cabbage-Late Flat Dutch
 Cabbage-Red Acre
 Cantaloupe-Hale's Best Jumbo
 Carrot-Danvers 126 Half Long
 Carrot-Nantes
 Cauliflower-Snowball Y Improved
 Collards-Georiga Southern
 Corn-Golden Bantam 8 Row
 Corn-Pearls & Gold
 Cucumber-Boston Pickling
 Cucumber-Marketmore 76
 Eggplant-Black Beauty
 Endive-Broadleaf Batavian
 Fennel-Florence
 Kale-Lacianto
 Leeks-American Flag
 Lettuce-Buttercrunch
 Lettuce-Mesclun Mix (Red & Green)
 Lettuce-Paris Island Cos Romaine
 Lettuce-Red Salad Bowl
 Lettuce-Simpson's Curled
 Mustard-Southern Giant Curled
 Okra-Clemson Spineless
 Onion-Evergreen Bunching
 Onion-Red Danvers
 Onion-Yellow Sweet Spanish
 Pea-Little Marvel
 Pea-Oregon Sugar Pod II
 Pea-Sugar Ann Snap
 Pepper-California Wonder Pepper (Sweet)
 Pepper-Cayenne Long Red Thin (Hot)
 Pepper-Jalapeno (Hot)
 Pumpkin-Jack O' Lantern
 Radish-Cherry Belle
 Radish-French Breakfast
 Radish-Sparkler
 Spinach-Bloomsdale
 Squash-Early Summer Crookneck
 Squash-Zucchini Black Beauty
 Swiss Chard-Fordhook Giant

Tomato-Ace 55
 Tomato-Beefsteak
 Tomato-Brandywine
 Tomato-Large Red Cherry
 Tomato-Roma
 Turnip-Purple Top Globe
 Turnip-Seven Top
 Watermelon-Crimson Sweet
 Watermelon-Sugar Baby

HERBS

Arugula-Rouquette
 Basil-Genovese (Sweet)
 Basil-Purple Dark Opal
 Caraway
 Catnip
 Chamomile-German
 Chives
 Coriander-Slow Bolting
 Cress-Curled Garden
 Dill-Mammoth Long Island
 Garlic Chives
 Mint-Peppermint
 Oregano
 Parsley-Moss Curled
 Parsley-Plain Italian
 Sage-Broadleaf
 Summer Savory
 Sweet Marjoram
 Thyme

FLOWERS

Alyssum-Carpet of Snow-Lobularia maritima
 Annual Mix-Wildflowers
 Aster Crego-Mixed Colors-
 Callistephus chinensis
 Baby Blue Eyes-Nemophila menziesii
 Baby Snapdragon-Mixed-Linaria maroccana
 Baby's Breath-Covent Garden-
 Gypsophila elegans
 Bachelor's Button-Mixed-Centaurea cyanus
 Bee Feed Mix-Wildflowers
 Bird & Butterfly Mix-Wildflowers
 Bird's Eyes-Gilia tricolor
 Black Eyed Susan-Rudbeckia hirta
 Blanketflower-Galardia pulchella
 Blue Flax-Linum lewisii
 Butterfly Feed-Milkweed Mix
 Calendula-Pacific Beauty Mixed Colors-
 Calendula officinalis

Catchfly-Silene armeria
 Chinese Houses-Collinsia heterophylla
 Coreopsis-Dwarf Plains-Coreopsis tinctoria
 Coreopsis-Lance Leaf-Coreopsis lanceolata
 Cosmos Sensation-Mixed Colors-
 Cosmos bipinnatus
 Cut Flower Mix-Mixed Annuals
 Dianthus-Mixed Colors Pinks-
 Dianthus chinensis
 Evening Primrose-Oenothera lamarckiana
 Forget Me Not-Firmament-
 Cynoglossum amabile
 Foxglove-Digitalis purpurea
 Garland Chrysanthemum-
 Chrysanthemum coronarium
 Gourds-Ornamental Mixed
 Hollyhock-Chater's Double Mixed-Alcea rosea
 Larkspur-Giant Imperial Mixed Colors-
 Delphinium consolida
 Low Maintenance Mix-Wildflowers
 Lupine-Blue-Lupinus perennis
 Lupine-White-Lupinus albus
 Marigold-Crackerjack Mixed-Tagetes erecta
 Marigold-Dwarf French Mixed-Tagetes patula
 Morning Glory Mixed Colors-Ipomoea
 Nasturtium-Jewel Mixed Colors-
 Tropaeolum majus
 Painted Daisy-Chrysanthemum carinatum
 Perennial Mix-Wildflowers
 Phlox Drummondii-Mixed Colors-
 Phlox drummondii
 Poppy-Shirley Mixed Colors-Papaver rhoeas
 Portulaca-Mixed Colors-Portulaca grandiflora
 Purple Coneflower-Echinacea purpurea
 Rose Mallow-Lavatera trimestris
 Scarlet Flax-Linum grandiflorum rubrum
 Shade Mix-Wildflowers
 Shasta Daisy-Chrysanthemum maximum
 Sunny Mix-Wildflowers
 Sunflower-Mammoth-Helianthus annuus
 Sunflower-Sungold Dwarf-Helianthus annuus
 Sweet Peas-Royal Family Mixed Colors-
 Lathyrus odoratus
 Sweet William-Tall Single Mix-
 Dianthus barbatus
 Texas Bluebonnet-Lupinus texensis
 Zinnia-California Giant Mixed-Zinnia elegans
 Zinnia-Lilliput Mixed Colors-Zinnia elegans

1,000-A (Assorted)

VEGETABLES

Bean-Golden Wax
 Bean-Henderson's Bush Lima
 Bean-Kentucky Wonder (Green Pole)
 Bean-Provider (Green Bush)
 Beet-Chioggia
 Beet-Detroit Dark Red
 Broccoli-Green Sprouting Calabrese
 Brussel Sprouts-Long Island Improved
 Cabbage-Copenhagen
 Cabbage-Late Flat Dutch
 Cabbage-Red Acre
 Cantaloupe-Hale's Best Jumbo
 Carrot-Danvers 126 Half Long
 Carrot-Nantes
 Cauliflower-Snowball Y Improved
 Collards-Georiga Southern
 Corn-Golden Bantam 8 Row
 Corn-Pearls & Gold
 Cucumber-Boston Pickling
 Cucumber-Marketmore 76
 Eggplant-Black Beauty
 Endive-Broadleaf Batavian
 Fennel-Florence
 Kale-Lacianto
 Leeks-American Flag
 Lettuce-Buttercrunch
 Lettuce-Mesclun Mix (Red & Green)
 Lettuce-Paris Island Cos Romaine
 Lettuce-Red Salad Bowl
 Lettuce-Simpson's Curled
 Mustard-Southern Giant Curled
 Okra-Clemson Spineless
 Onion-Evergreen Bunching
 Onion-Red Danvers
 Onion-Yellow Sweet Spanish
 Pea-Little Marvel
 Pea-Oregon Sugar Pod II
 Pea-Sugar Ann Snap
 Pepper-California Wonder Pepper (Sweet)
 Pepper-Cayenne Long Red Thin (Hot)
 Pepper-Jalapeno (Hot)
 Pumpkin-Jack O' Lantern
 Radish-Cherry Belle
 Radish-French Breakfast
 Radish-Sparkler
 Spinach-Bloomsdale
 Squash-Acorn Table Queen
 Squash-Buttercup Burgess
 Squash-Butternut Waltham
 Squash-Early Summer Crookneck

Squash-Zucchini Black Beauty
 Swiss Chard-Fordhook Giant
 Tomato-Ace 55
 Tomato-Beefsteak
 Tomato-Brandywine
 Tomato-Large Red Cherry
 Tomato-Roma
 Turnip-Purple Top Globe
 Turnip-Seven Top
 Watermelon-Crimson Sweet
 Watermelon-Sugar Baby

HERBS

Arugula-Rouquette
 Basil-Genovese (Sweet)
 Basil-Purple Dark Opal
 Caraway
 Catnip
 Chamomile-German
 Chives
 Coriander-Slow Bolting
 Cress-Curled Garden
 Dill-Mammoth Long Island
 Garlic Chives
 Mint-Peppermint
 Oregano
 Parsley-Moss Curled
 Parsley-Plain Italian
 Sage-Broadleaf
 Summer Savory
 Sweet Marjoram
 Thyme

FLOWERS

Alyssum-Carpet of Snow-Lobularia maritima
 Annual Mix-Wildflowers
 Aster Crego-Mixed Colors-
 Callistephus chinensis
 Baby Blue Eyes-Nemophila menziesii
 Baby Snapdragon-Mixed-Linaria maroccana
 Baby's Breath-Covent Garden-
 Gypsophila elegans
 Bachelor's Button-Mixed-Centaurea cyanus
 Bee Feed Mix-Wildflowers
 Bird & Butterfly Mix-Wildflowers
 Bird's Eyes-Gilia tricolor
 Black Eyed Susan-Rudbeckia hirta
 Blanketflower-Galardia pulchella
 Blue Flax-Linum lewisii
 Butterfly Feed-Milkweed Mix

Calendula-Pacific Beauty Mixed Colors-
 Calendula officinalis
 Catchfly-Silene armeria
 Chinese Houses-Collinsia heterophylla
 Coreopsis-Dwarf Plains-Coreopsis tinctoria
 Coreopsis-Lance Leaf-Coreopsis lanceolata
 Cosmos Sensation-Mixed Colors-
 Cosmos bipinnatus
 Cut Flower Mix-Mixed Annuals
 Dianthus-Mixed Colors Pinks-
 Dianthus chinensis
 Evening Primrose-Oenothera lamarckiana
 Forget Me Not-Firmament-
 Cynoglossum amabile
 Foxglove-Digitalis purpurea
 Garland Chrysanthemum-
 Chrysanthemum coronarium
 Gourds-Ornamental Mixed
 Hollyhock-Chater's Double Mixed-Alcea rosea
 Larkspur-Giant Imperial Mixed Colors-
 Delphinium consolida
 Low Maintenance Mix-Wildflowers
 Lupine-Blue-Lupinus perennis
 Lupine-White-Lupinus albus
 Marigold-Crackerjack Mixed-Tagetes erecta
 Marigold-Dwarf French Mixed-Tagetes patula
 Morning Glory Mixed Colors-Ipomoea
 Nasturtium-Jewel Mixed Colors-
 Tropaeolum majus
 Painted Daisy-Chrysanthemum carinatum
 Perennial Mix-Wildflowers
 Phlox Drummondii-Mixed Colors-
 Phlox drummondii
 Poppy-Shirley Mixed Colors-Papaver rhoeas
 Portulaca-Mixed Colors-Portulaca grandiflora
 Purple Coneflower-Echinacea purpurea
 Rose Mallow-Lavatera trimestris
 Scarlet Flax-Linum grandiflorum rubrum
 Shade Mix-Wildflowers
 Shasta Daisy-Chrysanthemum maximum
 Sunny Mix-Wildflowers
 Sunflower-Mammoth-Helianthus annuus
 Sunflower-Sungold Dwarf-Helianthus annuus
 Sweet Peas-Royal Family Mixed Colors-
 Lathyrus odoratus
 Sweet William-Tall Single Mix-
 Dianthus barbatus
 Texas Bluebonnet-Lupinus texensis
 Zinnia-California Giant Mixed-Zinnia elegans
 Zinnia-Lilliput Mixed Colors-Zinnia elegans

1,000-VH (Vegetable & Herb)

VEGETABLES

Bean-Golden Wax
 Bean-Henderson's Bush Lima
 Bean-Kentucky Wonder (Green Pole)
 Bean-Provider (Green Bush)
 Beet-Chioggia
 Beet-Detroit Dark Red
 Broccoli-Green Sprouting Calabrese
 Brussel Sprouts-Long Island Improved
 Cabbage-Copenhagen
 Cabbage-Late Flat Dutch
 Cabbage-Red Acre
 Cantaloupe-Hale's Best Jumbo
 Carrot-Danvers 126 Half Long
 Carrot-Nantes
 Cauliflower-Snowball Y Improved
 Collards-Georiga Southern
 Corn-Golden Bantam 8 Row
 Corn-Pearls & Gold
 Cucumber-Boston Pickling
 Cucumber-Marketmore 76
 Eggplant-Black Beauty
 Endive-Broadleaf Batavian
 Fennel-Florence
 Kale-Lacianto
 Leeks-American Flag
 Lettuce-Buttercrunch
 Lettuce-Mesclun Mix (Red & Green)
 Lettuce-Paris Island Cos Romaine
 Lettuce-Red Salad Bowl
 Lettuce-Simpson's Curled

Mustard-Southern Giant Curled
 Okra-Clemson Spineless
 Onion-Evergreen Bunching
 Onion-Red Danvers
 Onion-Yellow Sweet Spanish
 Pea-Little Marvel
 Pea-Oregon Sugar Pod II
 Pea-Sugar Ann Snap
 Pepper-California Wonder Pepper (Sweet)
 Pepper-Cayenne Long Red Thin (Hot)
 Pepper-Jalapeno (Hot)
 Pumpkin-Jack O' Lantern
 Radish-Cherry Belle
 Radish-French Breakfast
 Radish-Sparkler
 Spinach-Bloomsdale
 Squash-Acorn Table Queen
 Squash-Buttercup Burgess
 Squash-Butternut Waltham
 Squash-Early Summer Crookneck
 Squash-Zucchini Black Beauty
 Swiss Chard-Fordhook Giant
 Tomato-Ace 55
 Tomato-Beefsteak
 Tomato-Brandywine
 Tomato-Large Red Cherry
 Tomato-Roma
 Turnip-Purple Top Globe
 Turnip-Seven Top
 Watermelon-Crimson Sweet
 Watermelon-Sugar Baby

HERBS

Arugula-Rouquette
 Basil-Genovese (Sweet)
 Basil-Purple Dark Opal
 Caraway
 Catnip
 Chamomile-German
 Chives
 Coriander-Slow Bolting
 Cress-Curled Garden
 Dill-Mammoth Long Island
 Garlic Chives
 Mint-Peppermint
 Oregano
 Parsley-Moss Curled
 Parsley-Plain Italian
 Sage-Broadleaf
 Summer Savory
 Sweet Marjoram
 Thyme

1,000 PACKET CORRUGATED FLOOR DISPLAY

Consists of (2) 500 corrugated floor displays. Can be merchandised side-by-side or back-to-back.

- Available in 3 Assortments
 - Assorted
 - Vegetable / Herb
 - Southern



1,000-S (Southern Mix)

VEGETABLES

Bean-Golden Wax
 Bean-Henderson's Bush Lima
 Bean-Kentucky Wonder (Green Pole)
 Bean-Provider (Green Bush)
 Beet-Chioggia
 Beet-Detroit Dark Red
 Broccoli-Green Sprouting Calabrese
 Brussel Sprouts-Long Island Improved
 Cabbage-Copenhagen
 Cabbage-Late Flat Dutch
 Cabbage-Red Acre
 Cantaloupe-Hale's Best Jumbo
 Carrot-Danvers 126 Half Long
 Carrot-Nantes
 Cauliflower-Snowball Y Improved
 Collards-Georiga Southern
 Corn-Golden Bantam 8 Row
 Corn-Pearls & Gold
 Cucumber-Boston Pickling
 Cucumber-Marketmore 76
 Eggplant-Black Beauty
 Endive-Broadleaf Batavian
 Fennel-Florence
 Kale-Lacianto
 Leeks-American Flag
 Lettuce-Buttercrunch
 Lettuce-Mesclun Mix (Red & Green)
 Lettuce-Paris Island Cos Romaine
 Lettuce-Red Salad Bowl
 Lettuce-Simpson's Curled
 Mustard-Southern Giant Curled
 Okra-Clemson Spineless
 Onion-Evergreen Bunching
 Onion-Red Danvers
 Onion-Yellow Sweet Spanish
 Pea-Little Marvel
 Pea-Oregon Sugar Pod II
 Pea-Sugar Ann Snap
 Pepper-California Wonder Pepper (Sweet)
 Pepper-Cayenne Long Red Thin (Hot)
 Pepper-Jalapeno (Hot)
 Pumpkin-Jack O' Lantern
 Radish-Cherry Belle
 Radish-French Breakfast
 Radish-Sparkler
 Spinach-Bloomsdale
 Squash-Early Summer Crookneck
 Squash-Zucchini Black Beauty
 Swiss Chard-Fordhook Giant

Tomato-Ace 55
 Tomato-Beefsteak
 Tomato-Brandywine
 Tomato-Large Red Cherry
 Tomato-Roma
 Turnip-Purple Top Globe
 Turnip-Seven Top
 Watermelon-Crimson Sweet
 Watermelon-Sugar Baby

HERBS

Arugula-Rouquette
 Basil-Genovese (Sweet)
 Basil-Purple Dark Opal
 Caraway
 Catnip
 Chamomile-German
 Chives
 Coriander-Slow Bolting
 Cress-Curled Garden
 Dill-Mammoth Long Island
 Garlic Chives
 Mint-Peppermint
 Oregano
 Parsley-Moss Curled
 Parsley-Plain Italian
 Sage-Broadleaf
 Summer Savory
 Sweet Marjoram
 Thyme

FLOWERS

Alyssum-Carpet of Snow-Lobularia maritima
 Annual Mix-Wildflowers
 Aster Crego-Mixed Colors-
 Callistephus chinensis
 Baby Blue Eyes-Nemophila menziesii
 Baby Snapdragon-Mixed-Linaria maroccana
 Baby's Breath-Covent Garden-
 Gypsophila elegans
 Bachelor's Button-Mixed-Centaurea cyanus
 Bee Feed Mix-Wildflowers
 Bird & Butterfly Mix-Wildflowers
 Bird's Eyes-Gilia tricolor
 Black Eyed Susan-Rudbeckia hirta
 Blanketflower-Galardia pulchella
 Blue Flax-Linum lewisii
 Butterfly Feed-Milkweed Mix
 Calendula-Pacific Beauty Mixed Colors-
 Calendula officinalis

Catchfly-Silene armeria
 Chinese Houses-Collinsia heterophylla
 Coreopsis-Dwarf Plains-Coreopsis tinctoria
 Coreopsis-Lance Leaf-Coreopsis lanceolata
 Cosmos Sensation-Mixed Colors-
 Cosmos bipinnatus
 Cut Flower Mix-Mixed Annuals
 Dianthus-Mixed Colors Pinks-
 Dianthus chinensis
 Evening Primrose-Oenothera lamarckiana
 Forget Me Not-Firmament-
 Cynoglossum amabile
 Foxglove-Digitalis purpurea
 Garland Chrysanthemum-
 Chrysanthemum coronarium
 Gourds-Ornamental Mixed
 Hollyhock-Chater's Double Mixed-Alcea rosea
 Larkspur-Giant Imperial Mixed Colors-
 Delphinium consolida
 Low Maintenance Mix-Wildflowers
 Lupine-Blue-Lupinus perennis
 Lupine-White-Lupinus albus
 Marigold-Crackerjack Mixed-Tagetes erecta
 Marigold-Dwarf French Mixed-Tagetes patula
 Morning Glory Mixed Colors-Ipomoea
 Nasturtium-Jewel Mixed Colors-
 Tropaeolum majus
 Painted Daisy-Chrysanthemum carinatum
 Perennial Mix-Wildflowers
 Phlox Drummondii-Mixed Colors-
 Phlox drummondii
 Poppy-Shirley Mixed Colors-Papaver rhoeas
 Portulaca-Mixed Colors-Portulaca grandiflora
 Purple Coneflower-Echinacea purpurea
 Rose Mallow-Lavatera trimestris
 Scarlet Flax-Linum grandiflorum rubrum
 Shade Mix-Wildflowers
 Shasta Daisy-Chrysanthemum maximum
 Sunny Mix-Wildflowers
 Sunflower-Mammoth-Helianthus annuus
 Sunflower-Sungold Dwarf-Helianthus annuus
 Sweet Peas-Royal Family Mixed Colors-
 Lathyrus odoratus
 Sweet William-Tall Single Mix-
 Dianthus barbatus
 Texas Bluebonnet-Lupinus texensis
 Zinnia-California Giant Mixed-Zinnia elegans
 Zinnia-Lilliput Mixed Colors-Zinnia elegans

500-A (Assorted)

VEGETABLES

Bean-Golden Wax
 Bean-Henderson's Bush Lima
 Bean-Provider (Green Bush)
 Beet-Detroit Dark Red
 Broccoli-Green Sprouting Calabrese
 Cabbage-Copenhagen
 Cantaloupe-Hale's Best Jumbo
 Carrot-Danvers 126 Half Long
 Carrot-Nantes
 Cauliflower-Snowball Y Improved
 Corn-Golden Bantam 8 Row
 Cucumber-Boston Pickling
 Cucumber-Marketmore 76
 Eggplant-Black Beauty
 Kale-Lacianto
 Lettuce-Paris Island Cos Romaine
 Lettuce-Red Salad Bowl
 Lettuce-Simpson's Curled
 Onion-Evergreen Bunching
 Onion-Yellow Sweet Spanish

Pea-Little Marvel
 Pepper-California Wonder Pepper (Sweet)
 Pepper-Jalapeno (Hot)
 Radish-Cherry Belle
 Spinach-Bloomsdale
 Squash-Butternut Waltham
 Squash-Early Summer Crookneck
 Squash-Zucchini Black Beauty
 Swiss Chard-Fordhook Giant
 Tomato-Ace 55
 Tomato-Roma
 Turnip-Purple Top Globe
 Watermelon-Sugar Baby

HERBS

Basil-Genovese (Sweet)
 Chives
 Coriander-Slow Bolting
 Dill-Mammoth Long Island
 Parsley-Plain Italian
 Thyme

FLOWERS

Alyssum-Carpet of Snow-Lobularia maritima
 Annual Mix-Wildflowers
 Aster Crego-Mixed Colors-
 Callistephus chinensis
 Bachelor's Button-Mixed-Centaurea cyanus
 Bee Feed Mix-Wildflowers
 Bird & Butterfly Mix-Wildflowers
 Black Eyed Susan-Rudbeckia hirta
 Butterfly Feed-Milkweed Mix
 Cosmos Sensation-Mixed Colors-
 Cosmos bipinnatus
 Forget Me Not-Firmament-
 Cynoglossum amabile
 Marigold-Crackerjack Mixed-Tagetes erecta
 Marigold-Dwarf French Mixed-Tagetes patula
 Poppy-Shirley Mixed Colors-Papaver rhoeas
 Shasta Daisy-Chrysanthemum maximum
 Sunflower-Mammoth-Helianthus annuus
 Sunflower-Sungold Dwarf-Helianthus annuus
 Zinnia-California Giant Mixed-Zinnia elegans
 Zinnia-Lilliput Mixed Colors-Zinnia elegans

500-VH (Vegetable & Herb)

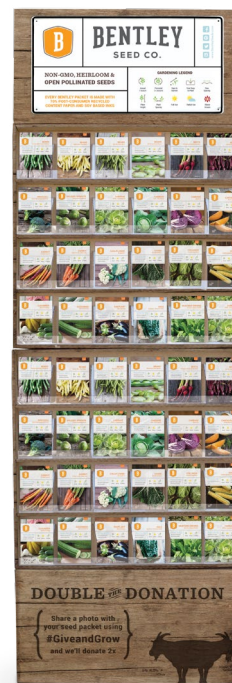
VEGETABLES

Bean-Golden Wax
 Bean-Henderson's Bush Lima
 Bean-Kentucky Wonder (Green Pole)
 Bean-Provider (Green Bush)
 Beet-Detroit Dark Red
 Broccoli-Green Sprouting Calabrese
 Cabbage-Copenhagen
 Cantaloupe-Hale's Best Jumbo
 Carrot-Danvers 126 Half Long
 Carrot-Nantes
 Corn-Golden Bantam 8 Row
 Cucumber-Boston Pickling
 Cucumber-Marketmore 76
 Eggplant-Black Beauty
 Kale-Lacianto
 Lettuce-Buttercrunch
 Lettuce-Paris Island Cos Romaine
 Lettuce-Red Salad Bowl
 Lettuce-Simpson's Curled
 Okra-Clemson Spineless
 Onion-Evergreen Bunching
 Onion-Red Danvers
 Pea-Little Marvel
 Pea-Oregon Sugar Pod II
 Pepper-California Wonder Pepper (Sweet)
 Pepper-Cayenne Long Red Thin (Hot)
 Pepper-Jalapeno (Hot)

Pumpkin-Jack O' Lantern
 Radish-Cherry Belle
 Radish-Sparkler
 Spinach-Bloomsdale
 Squash-Acorn Table Queen
 Squash-Buttercup Burgess
 Squash-Butternut Waltham
 Squash-Early Summer Crookneck
 Squash-Zucchini Black Beauty
 Swiss Chard-Fordhook Giant
 Tomato-Ace 55
 Tomato-Brandywine
 Tomato-Large Red Cherry
 Tomato-Roma
 Turnip-Purple Top Globe
 Watermelon-Sugar Baby

HERBS

Arugula-Rouquette
 Basil-Genovese (Sweet)
 Chamomile-German
 Chives
 Coriander-Slow Bolting
 Dill-Mammoth Long Island
 Oregano
 Parsley-Moss Curled
 Parsley-Plain Italian



500 PACKET CORRUGATED FLOOR DISPLAY

Overall Dimensions:
 22.5"W x 14"D x 63.5"H

- Available in 4 Assortments
 - Assorted
 - Vegetable / Herb
 - Southern
 - Flower

500-S (Southern Mix)

VEGETABLES

Bean-Henderson's Bush Lima
 Bean-Kentucky Wonder (Green Pole)
 Bean-Provider (Green Bush)
 Beet-Detroit Dark Red
 Cantaloupe-Hale's Best Jumbo
 Carrot-Danvers 126 Half Long
 Carrot-Nantes
 Collards-Georgia Southern
 Corn-Golden Bantam 8 Row
 Cucumber-Boston Pickling
 Cucumber-Marketmore 76
 Lettuce-Mesclun Mix (Red & Green)
 Lettuce-Paris Island Cos Romaine
 Lettuce-Simpson's Curled
 Mustard-Southern Giant Curled
 Okra-Clemson Spineless
 Onion-Evergreen Bunching
 Pepper-California Wonder Pepper (Sweet)
 Pepper-Jalapeno (Hot)
 Pumpkin-Jack O' Lantern

Radish-Cherry Belle
 Radish-Sparkler
 Spinach-Bloomsdale
 Squash-Early Summer Crookneck
 Squash-Zucchini Black Beauty
 Tomato-Ace 55
 Tomato-Brandywine
 Turnip-Purple Top Globe
 Turnip-Seven Top
 Watermelon-Crimson Sweet
 Watermelon-Sugar Baby

HERBS

Basil-Genovese (Sweet)
 Chamomile-German
 Coriander-Slow Bolting
 Dill-Mammoth Long Island
 Oregano
 Parsley-Plain Italian

FLOWERS

Alyssum-Carpet of Snow-Lobularia maritima
 Annual Mix-Wildflowers
 Bachelor's Button-Mixed-Centaurea cyanus
 Bird & Butterfly Mix-Wildflowers
 Black Eyed Susan-Rudbeckia hirta
 Butterfly Feed-Milkweed Mix
 Calendula-Pacific Beauty Mixed Colors-
 Calendula officinalis
 Cosmos Sensation-Mixed Colors-
 Cosmos bipinnatus
 Cut Flower Mix-Mixed Annuals
 Low Maintenance Mix-Wildflowers
 Marigold-Crackerjack Mixed-Tagetes erecta
 Marigold-Dwarf French Mixed-Tagetes patula
 Poppy-Shirley Mixed Colors-Papaver rhoeas
 Shade Mix-Wildflowers
 Shasta Daisy-Chrysanthemum maximum
 Sunflower-Mammoth-Helianthus annuus
 Sunflower-Sungold Dwarf-Helianthus annuus
 Texas Bluebonnet-Lupinus texensis
 Zinnia-California Giant Mixed-Zinnia elegans
 Zinnia-Lilliput Mixed Colors-Zinnia elegans

500-F (Flower)

Alyssum-Carpet of Snow-Lobularia maritima
 Annual Mix-Wildflowers
 Aster Crego-Mixed Colors-
 Callistephus chinensis
 Baby Blue Eyes-Nemophila menziesii
 Baby Snapdragon-Mixed-Linaria maroccana
 Baby's Breath-Covent Garden-
 Gypsophila elegans
 Bachelor's Button-Mixed-Centaurea cyanus
 Bee Feed Mix-Wildflowers
 Bird & Butterfly Mix-Wildflowers
 Bird's Eyes-Gilia tricolor
 Black Eyed Susan-Rudbeckia hirta
 Blanketflower-Galardia pulchella
 Blue Flax-Linum lewisii
 Butterfly Feed-Milkweed Mix
 Calendula-Pacific Beauty Mixed Colors-
 Calendula officinalis
 Catchfly-Silene armeria
 Coreopsis-Dwarf Plains-Coreopsis tinctoria
 Coreopsis-Lance Leaf-Coreopsis lanceolata

Cosmos Sensation-Mixed Colors-
 Cosmos bipinnatus
 Cut Flower Mix-Mixed Annuals
 Dianthus-Mixed Colors Pinks-
 Dianthus chinensis
 Evening Primrose-Oenothera lamarckiana
 Forget Me Not-Firmament-
 Cynoglossum amabile
 Foxglove-Digitalis purpurea
 Garland Chrysanthemum-
 Chrysanthemum coronarium
 Gourds-Ornamental Mixed
 Hollyhock-Chaters' Double Mixed-Alcea rosea
 Larkspur-Giant Imperial Mixed Colors-
 Delphinium consolida
 Low Maintenance Mix-Wildflowers
 Lupine-Blue-Lupinus perennis
 Marigold-Crackerjack Mixed-Tagetes erecta
 Marigold-Dwarf French Mixed-Tagetes patula
 Morning Glory Mixed Colors-Ipomoea
 Nasturtium-Jewel Mixed Colors-
 Tropaeolum majus

Painted Daisy-Chrysanthemum carinatum
 Perennial Mix-Wildflowers
 Phlox Drummondii-Mixed Colors-
 Phlox drummondii
 Poppy-Shirley Mixed Colors-Papaver rhoeas
 Portulaca-Mixed Colors-Portulaca grandiflora
 Purple Coneflower-Echinacea purpurea
 Rose Mallow-Lavatera trimestris
 Scarlet Flax-Linum grandiflorum rubrum
 Shade Mix-Wildflowers
 Shasta Daisy-Chrysanthemum maximum
 Sunny Mix-Wildflowers
 Sunflower-Mammoth-Helianthus annuus
 Sunflower-Sungold Dwarf-Helianthus annuus
 Sweet Peas-Royal Family Mixed Colors-
 Lathyrus odoratus
 Sweet William-Tall Single Mix-
 Dianthus barbatus
 Zinnia-California Giant Mixed-Zinnia elegans
 Zinnia-Lilliput Mixed Colors-Zinnia elegans

250-V (Vegetable)

Bean-Provider (Green Bush)
 Beet-Detroit Dark Red
 Broccoli-Green Sprouting Calabrese
 Cabbage-Copenhagen
 Cantaloupe-Hale's Best Jumbo
 Carrot-Danvers 126 Half Long
 Carrot-Nantes
 Cucumber-Marketmore 76
 Eggplant-Black Beauty

Kale-Lacianto
 Lettuce-Mesclun Mix (Red & Green)
 Lettuce-Paris Island Cos Romaine
 Lettuce-Simpson's Curled
 Onion-Evergreen Bunching
 Pepper-California Wonder Pepper (Sweet)
 Pepper-Jalapeno (Hot)
 Radish-Cherry Belle
 Spinach-Bloomsdale

Squash-Butternut Waltham
 Squash-Early Summer Crookneck
 Squash-Zucchini Black Beauty
 Tomato-Ace 55
 Tomato-Brandywine
 Tomato-Large Red Cherry
 Turnip-Purple Top Globe
 Watermelon-Sugar Baby

250- H (Herb)

Arugula-Rouquette
 Basil-Genovese (Sweet)
 Basil-Purple Dark Opal
 Caraway
 Catnip
 Chamomile-German
 Chives

Coriander-Slow Bolting
 Cress-Curled Garden
 Dill-Mammoth Long Island
 Garlic Chives
 Mint-Peppermint
 Oregano

Parsley-Moss Curled
 Parsley-Plain Italian
 Sage-Broadleaf
 Summer Savory
 Sweet Marjoram
 Thyme

250-F (Flower)

Alyssum-Carpet of Snow-Lobularia maritima
 Aster Crego-Mixed Colors-Callistephus chinensis
 Bachelor's Button-Mixed-Centaurea cyanus
 Bee Feed Mix-Wildflowers
 Black Eyed Susan-Rudbeckia hirta
 Calendula-Pacific Beauty Mixed Colors-
 Calendula officinalis
 Coreopsis-Dwarf Plains-Coreopsis tinctoria
 Cosmos Sensation-Mixed Colors-
 Cosmos bipinnatus

Forget Me Not-Firmament-Cynoglossum amabile
 Foxglove-Digitalis purpurea
 Hollyhock-Chater's Double Mixed-Alcea rosea
 Lupine-Blue-Lupinus perennis
 Marigold-Crackerjack Mixed-Tagetes erecta
 Marigold-Dwarf French Mixed-Tagetes patula
 Painted Daisy-Chrysanthemum carinatum
 Poppy-Shirley Mixed Colors-Papaver rhoeas
 Portulaca-Mixed Colors-Portulaca grandiflora
 Purple Coneflower-Echinacea purpurea

Shasta Daisy-Chrysanthemum maximum
 Sunflower-Mammoth-Helianthus annuus
 Sweet Peas-Royal Family Mixed Colors-
 Lathyrus odoratus
 Sweet William-Tall Single Mix-
 Dianthus barbatus
 Zinnia-California Giant Mixed-Zinnia elegans
 Zinnia-Lilliput Mixed Colors-Zinnia elegans

250 PACKET COUNTERTOP DISPLAY

Overall Dimensions:
 14.5"W x 7"D x 13.5"H

- Corrugated countertop displays
- Available in 3 Assortments
 - Vegetable
 - Herb
 - Flower

