

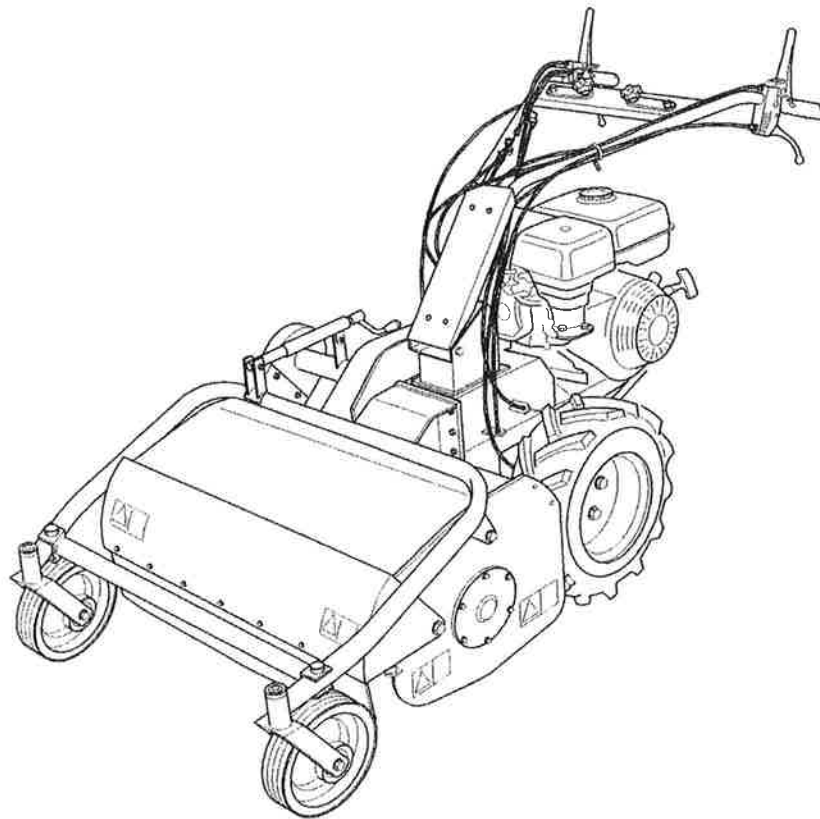
gl. mdl. med 1. kabel på gulke
håndtag



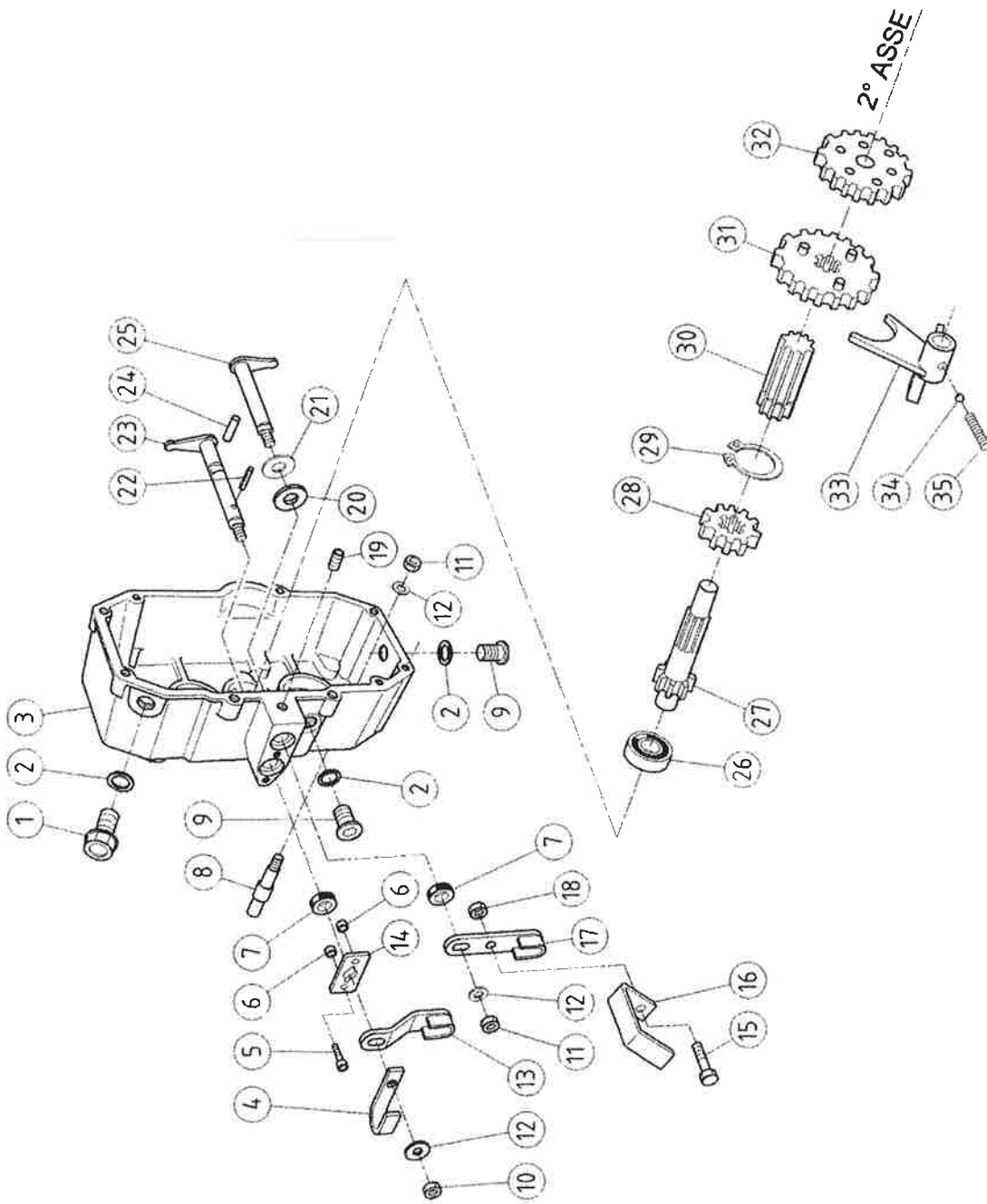
GARDEN EQUIPMENT

**FLAIL MOWER
WITH HONDA GX 270 ENGINE**

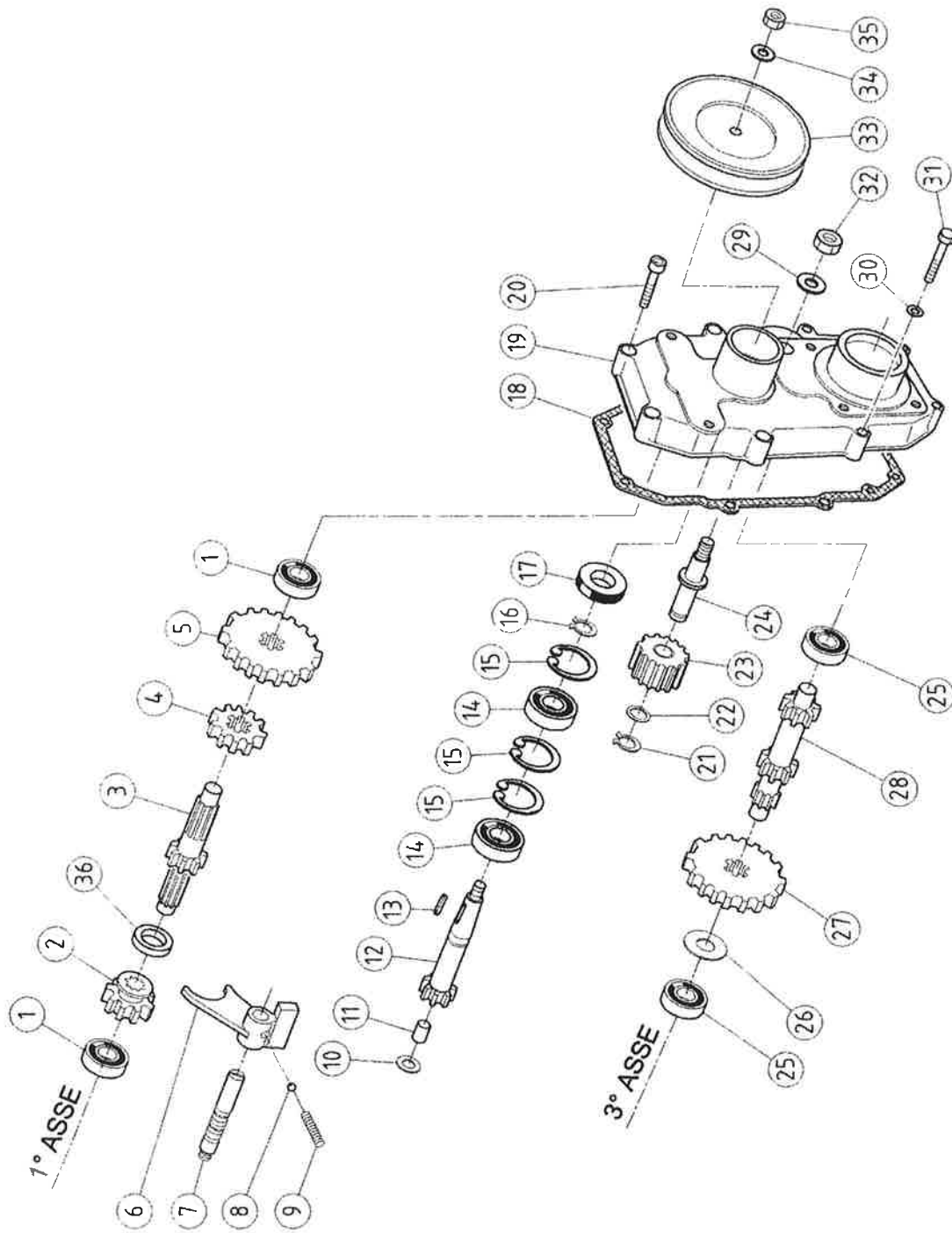
MODEL 830



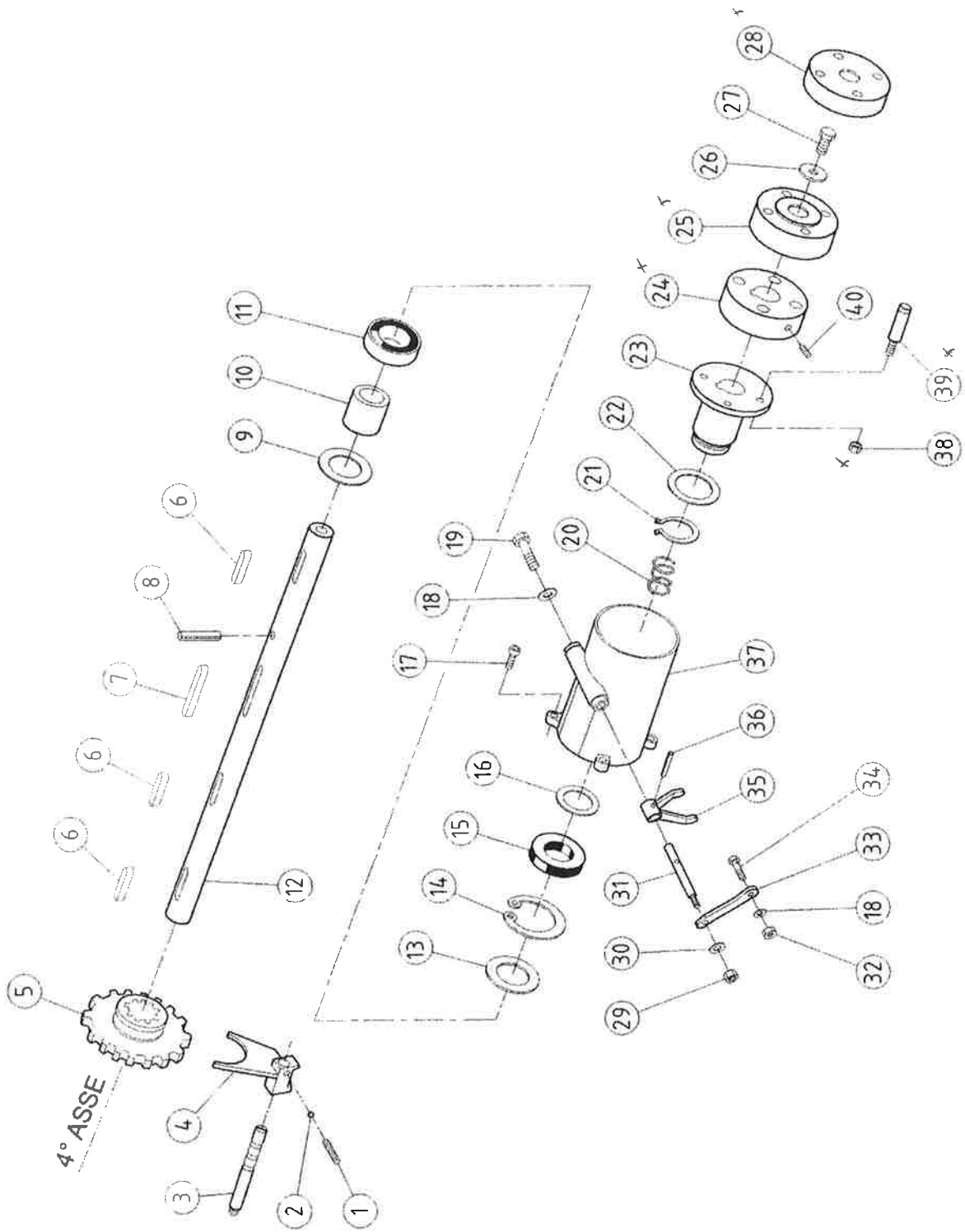
OPERATING AND SAFETY INSTRUCTIONS



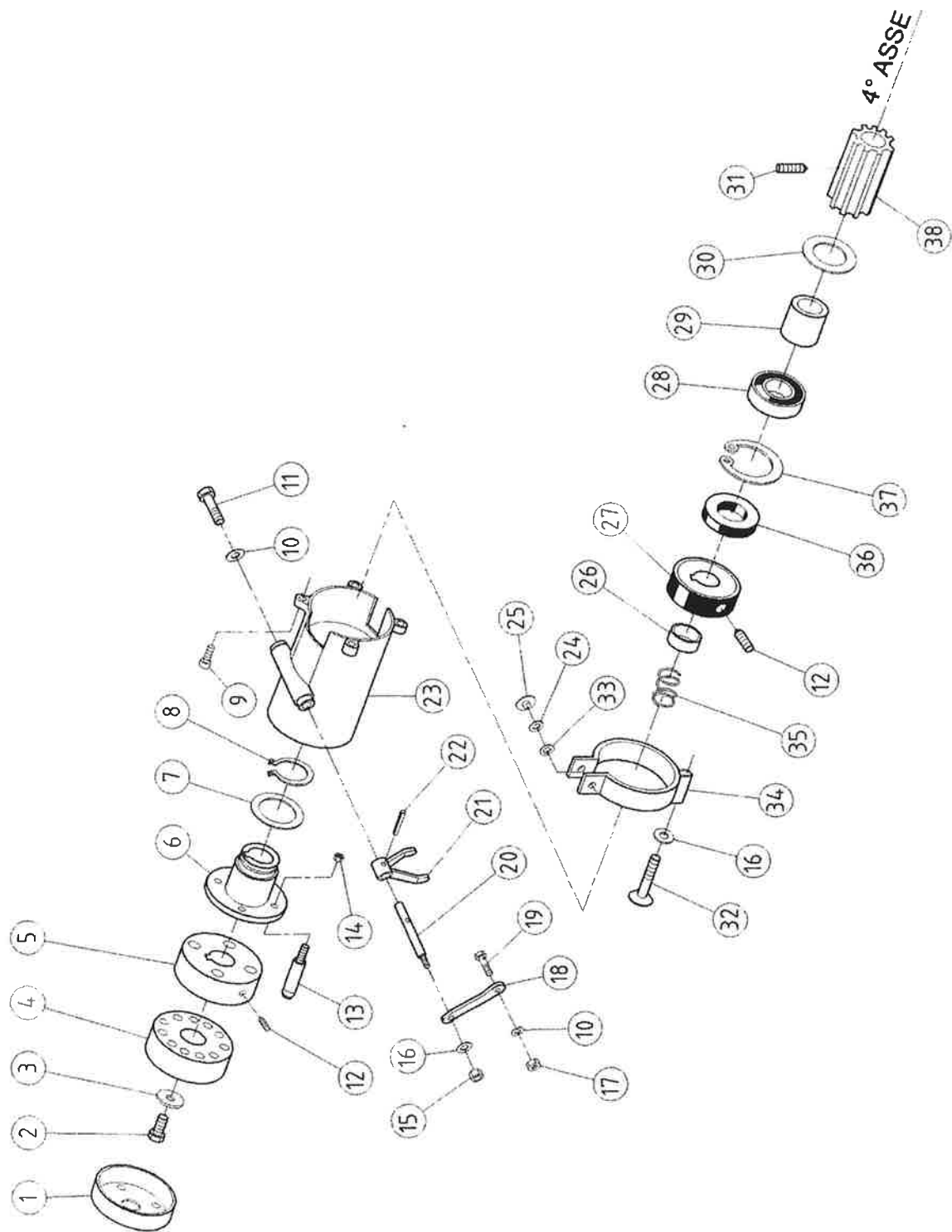
POS.	ART.NO.	DESCRIPTION	QTY.
001	CC18800	PLASTIC CAP M16X1.5	1
002	CC18801	FIBER WASHER FOR CAP CC18800	3
003	G082600	GEARBOX	1
004	G092000	SPEED LEVER ELEMENT	1
005	CC33300	VTCE M6X20 UNI 5931	2
006	G084900	BUSH 12X8X6	2
007	CC31100	SEALING RING 14X22X4	2
008	G084400	BRAKE BLOCK SUPP.PIN	1
009	S174000	INSET HEXAGONAL CUP DIN 908 M16X1.5 V41.1339	1
010	CC08300	SELF-LOCK A982 M8 H10	1
011	CC00800	DE ALTI U 5587 M8 H8	1
012	CC01800	RPN U 6592 FE 8	2
013	G084300	SPEED LEVER	1
014	G084800	SPEED GEAR PLATE	1
015	CC21200	VTE M6X18 UNI 5739	1
016	G088200	GEAR LEVER HOOK	1
017	G087400	GEAR CONTROL LEVER	1
018	CC16900	SELF-LOCKING A982 M6 H8	1
019	CC33400	DOWEL UNI 5923 M10X10	1
020	CC31700	RPN U 6592 FE 14	1
021	CC14000	SHIM PS 14X20X0.5	2
022	CC22800	FLEXIBLE PLUG DIN 1481 5X20	1
023	G082100	PIN WITH SPEED CONTROL LEVER	1
024	G086100	SPEED GEAR PIN 8 X 23	1
025	G084000	PIN WITH INVERTER CONTROL LEVER	1
026	CC15500	BEARING 17X40X12 6203	1
027	G081000	GEARMOTOR PINION Z13	1
028	G081200	FIXED GEAR 3RD SPEED	1
029	CC31400	SEEGER E27	1
030	G081100	REDUCING TUBE	1
031	G081500	SLIDING GEAR 2ND SPEED	1
032	G081400	NEUTRAL GEAR 2ND SPEED	1
033	G083600	SPEED GEAR FORK 1 ST 2ND SPEED	1
034	CC18500	BALL DIAM 1/4" (6.350)	1
035	T097000	GEAR FORK SPRING 6X25	1



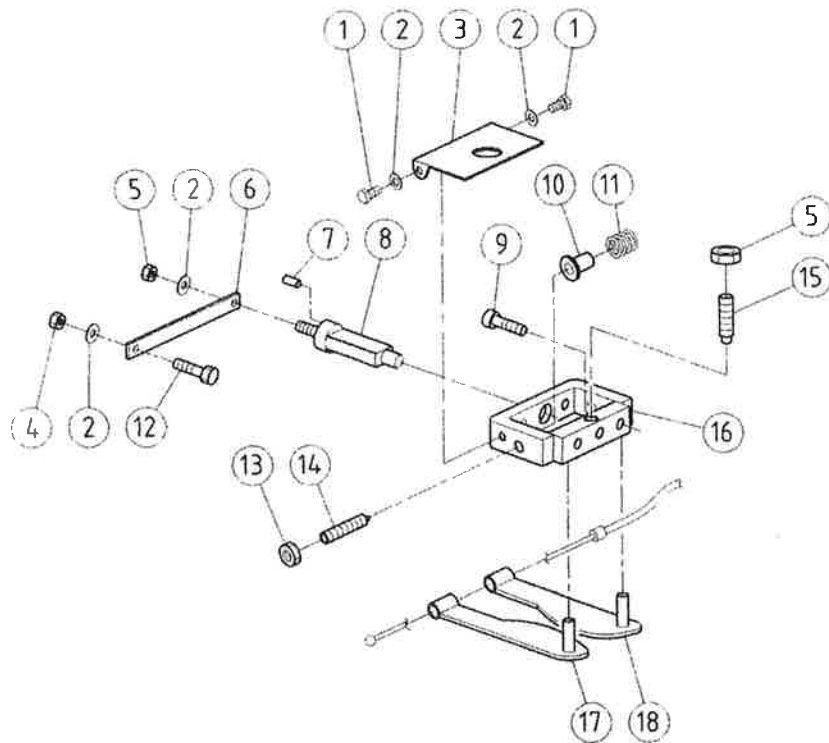
POS.	ART.NO.	DESCRIPTION	QTY.
001	CC15400	BEARING 15X35X11 6202	2
002	G080800	SLIDING GEAR 3RD SPEED	1
003	G080900	PINION WITH SHAFT.	1
004	G080700	FIXED GEAR 2ND SPEED	1
005	G080600	PRIMARY PINION GEAR	1
006	G083500	SPEED GEAR FORK 3RD SPEED	1
007	G084200	FORK PIN	1
008	CC18500	BALL DIAM ¼" (6.350)	1
009	T097000	GEAR FORK SPRING 6X25	1
010	CC33500	SHIM PS 12X24X0.5	1
011	CC21800	SELF-LOCKING BUSH PCM 121415 B	1
012	G080200	PRIMARY PINION Z13	1
013	CC18900	KEY 5X5X18 UNI 6604	1
014	CC11200	BEARING 20X42X12 6004	2
015	CC11400	SEEGER 142	3
016	CC31500	SEEGER E20	1
017	CC11500	SEALING RING 20X42X7 RP	1
018	G083300	GASKETNOVUS 30 SUPRA	1
019	G082700	GEARBOX COVER	1
020	CC00700	VTCE M8X30 UNI 5931	4
021	CC31300	SEEGER E16	1
022	CC33600	SHIM PS 16X26X0.8	1
023	G080300	INVERTER GEAR	1
024	G083100	REVERSE GEAR PIN	1
025	CC15500	BEARING 17X40X12 6203	2
026	CC30900	SHIM PS 17X30X0.5	1
027	G081300	FIXED REDUCER GEAR	1
028	G081600	BOUBLE INVERTER PINION	1
029	CC31700	RPN U 6592 FE 14	1
030	CC07900	WASHER DIAM. 8 DIN 137 P	3
031	CC08200	VTE M8X40 UNI 5737 PART. THREADED	4
032	CC13300	DE NORM U 5588 M14 1-111 PITCH 1.5	1
033	G082800	GEAR CONTROL PULLEY	1
034	CC08000	RPN U 6592 FE 12	1
035	CC17300	DE LOW U 5589 M12 H7	1
036	G091800	BUSH 34X21.6X8	1



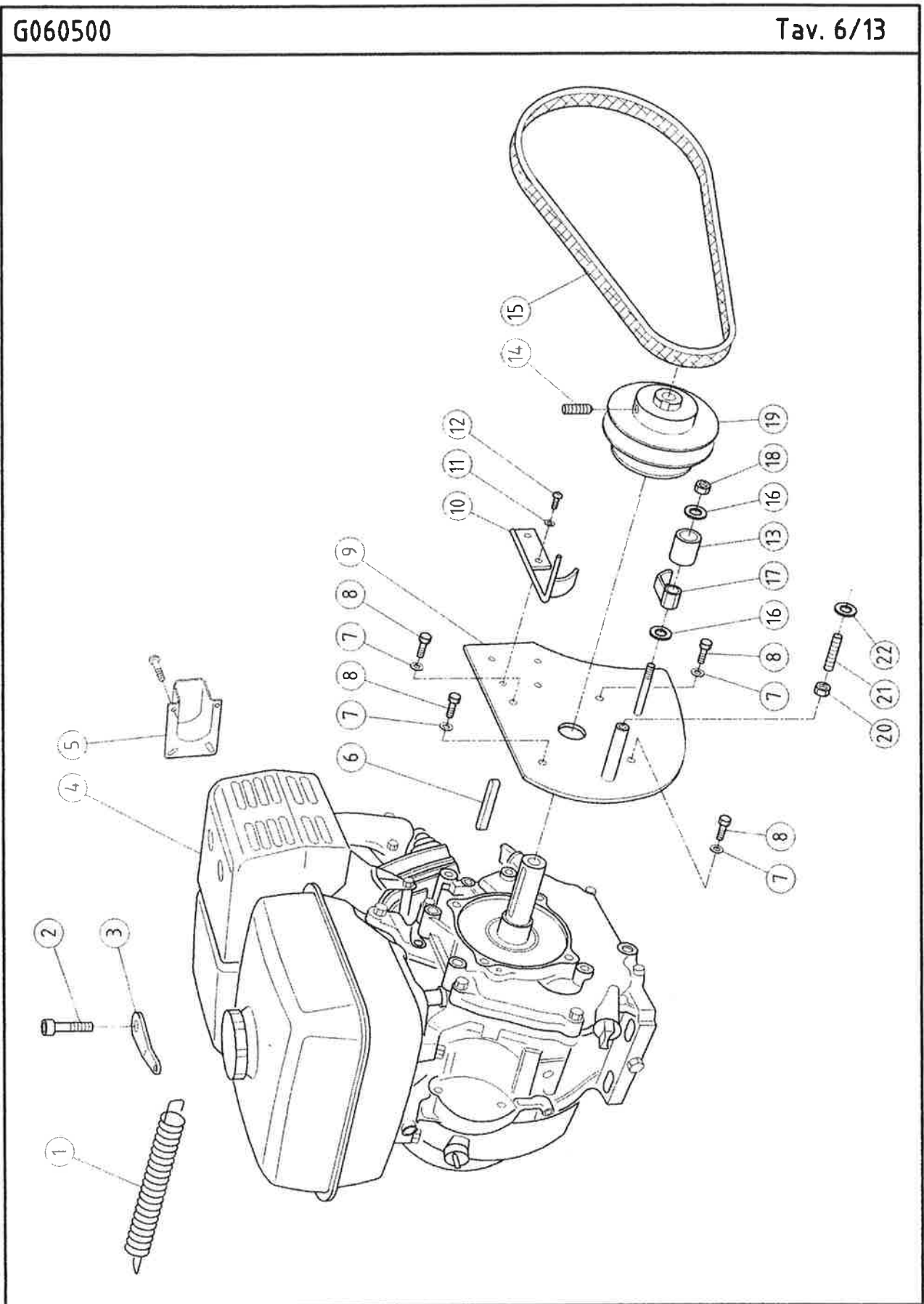
POS.	ART.NO.	DESCRIPTION	QTY.
001	T097000	GEAR FORK SPRING 6X25	1
002	CC18500	BALL DIAM ¼" (6.350)	1
003	G084100	INVERTER FORK PIN	1
004	G083400	INVERTER FORK	1
005	G080500	SLIDING INVERTER GEAR	1
006	CC18200	KEY 8X7X25 UNI 6604	3
007	CC29600	KEY 8X7X50 UNI 6604	1
008	CC22700	FLEXIBLE PLUG DIN 1481 5X35	1
009	G085000	WASHER 46X3 HOLE 25	1
010	G085100	BUSH 35X26X25	1
011	CC10400	BEARING 25X52X15 6205	1
012	G083900	WHEEL AXLE SHAFT	1
013	CC07100	SHIM PS 42X52X0.5	1
014	CC05000	SEEGER 152	1
015	S175400	SEALING RING 25X52X7	1
016	CC16100	SHIM PS 25X35X1	1
017	CC07700	VTCE M8X25 UNI 5931	4
018	CC02700	RPN U 6592 FE 6	2
019	CC12500	VTE M6X10 UNI 5739	1
020	F071900	WHEEL SPACER SPRING 6FU013700	1
021	CC22600	SEEGER E 40	1
022	CC20900	CENTERPLATE FOR BEARING LS 4060	1
023	F073700	PIN SUPPORT FLANGE	1
024	F073600	UNLOCKING PIN BRACKET	1
025	G082200	UNLOCKING WHEEL HUB	1
026	CC24700	SPECIAL WASHER 10X40X5	1
027	CC16600	VTE M10X20 UNI 5739	1
028	F086300	DUST COVER	1
029	CC00800	DE ALTI U 5587 M8 H8	1
030	CC01800	RPN U 6592 FE 8	1
031	F072900	RIGHT FORK PIN 12X97	1
032	CC09200	DE ALTI U 5587 M6 H6	1
033	F076800	UNLOCKING CONTROL LEVER	1
034	F076600	CLAMP 7X20	1
035	F081100	FORK MB 6DF01900	1
036	CC22800	FLEXIBLE PLUG DIN 1481 5X20	1
037	G085800	LEFT WHEEL UNLOCK CONTROL BRACKET	1
038	CC01100	SELF-LOCKING B985 M6 H6	4
039	F073100	UNLOCKING PIN	4
040	CC17600	POINTED DOWEL BOLT VCE UNI 5927 M8X16	1



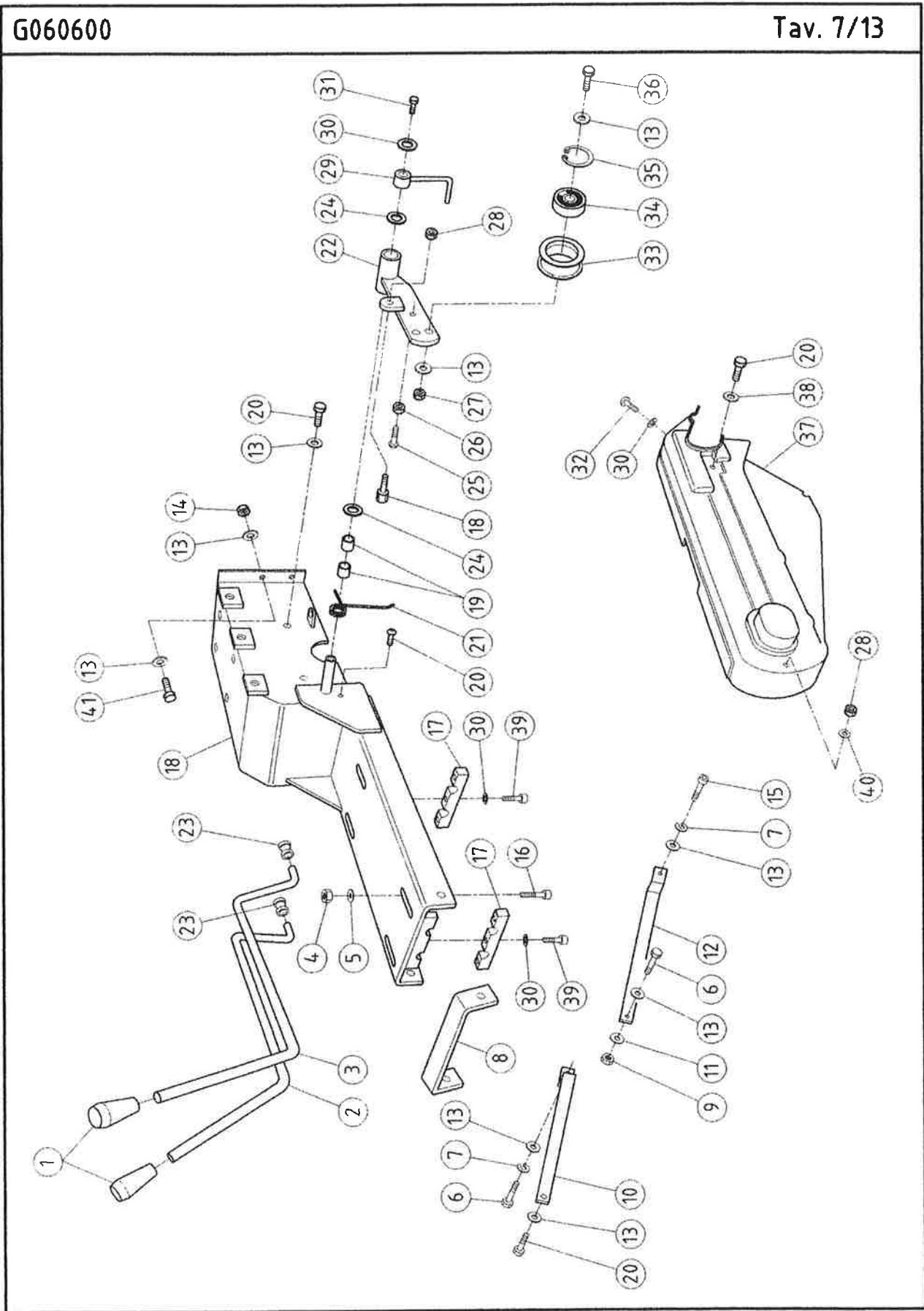
POS.	ART.NO.	DESCRIPTION	QTY.
001	F086300	DUST COVER	1
002	CC16600	VTE M10X20 UNI 5739	1
003	CC24700	SPACIAL WASHER 10X40X5	1
004	G082200	UNLOCKING WHEEL HUB	1
005	F073600	UNLOCKING PIN BRACKET	1
006	F073700	PIN SUPPORT FLANGE	1
007	CC20900	CENTERPLATE FOR BEARING LS 4060	1
008	CC22600	SEEGER E 40	1
009	CC07700	VTCE M8X25 UNI 5931	4
010	CC02700	RPN U 6592 FE 6	2
011	CC12500	VTE M6X10 UNI 5739	1
012	CC17600	POINTED DOWEL BOLT VCE UNI 5927 M8X16	2
013	F073100	UNLOCKING PIN	4
014	CC01100	SELF-LOCKING B985 M6 H6	4
015	CC00800	DE ALTI U 5587 M8 H8	1
016	CC01800	RPN U 6592 FE 8	2
017	CC09200	DE ALTI U 5587 M6 H6	1
018	F076800	UNLOCKING CONTROL LEVER	1
019	F076600	CLAMP 7X20	1
020	F083400	LEFT FORK PIN 12X97	1
021	F081100	FORK MB 6DF01900	1
022	CC22800	FLEXIBLE PLUG DIN 1481 5X20	1
023	G085700	LEFT WHEEL UNLOCK CONTROL BRACKET	1
024	CC24300	SHIM PS 6,3X17,8X0,3	2
025	F077400	BUSH 20X7,5	2
026	G089700	BUSH 30X25X10	1
027	F072800	BRAKE PULLEY WITH LINING	1
028	CC10400	BEARING 25X52X15 6205	1
029	G085100	BUSH 35X26X25	1
030	G085000	WASHER 46X3 HOLE 25	1
031	CC33800	DOWEL UNI 5923 M8X6	1
032	CC00400	VSP U 5933 M5X12	1
033	CC24400	SHIM PS 6,3X17,8X0,5	2
034	F080500	BRAKE RING	1
035	F071900	WHEEL SPACER SPRING 6FU013700	1
036	S175400	SEALING RING 25X52X7	1
037	CC05000	SEEGER 152	1
038	G080400	BUSH	1



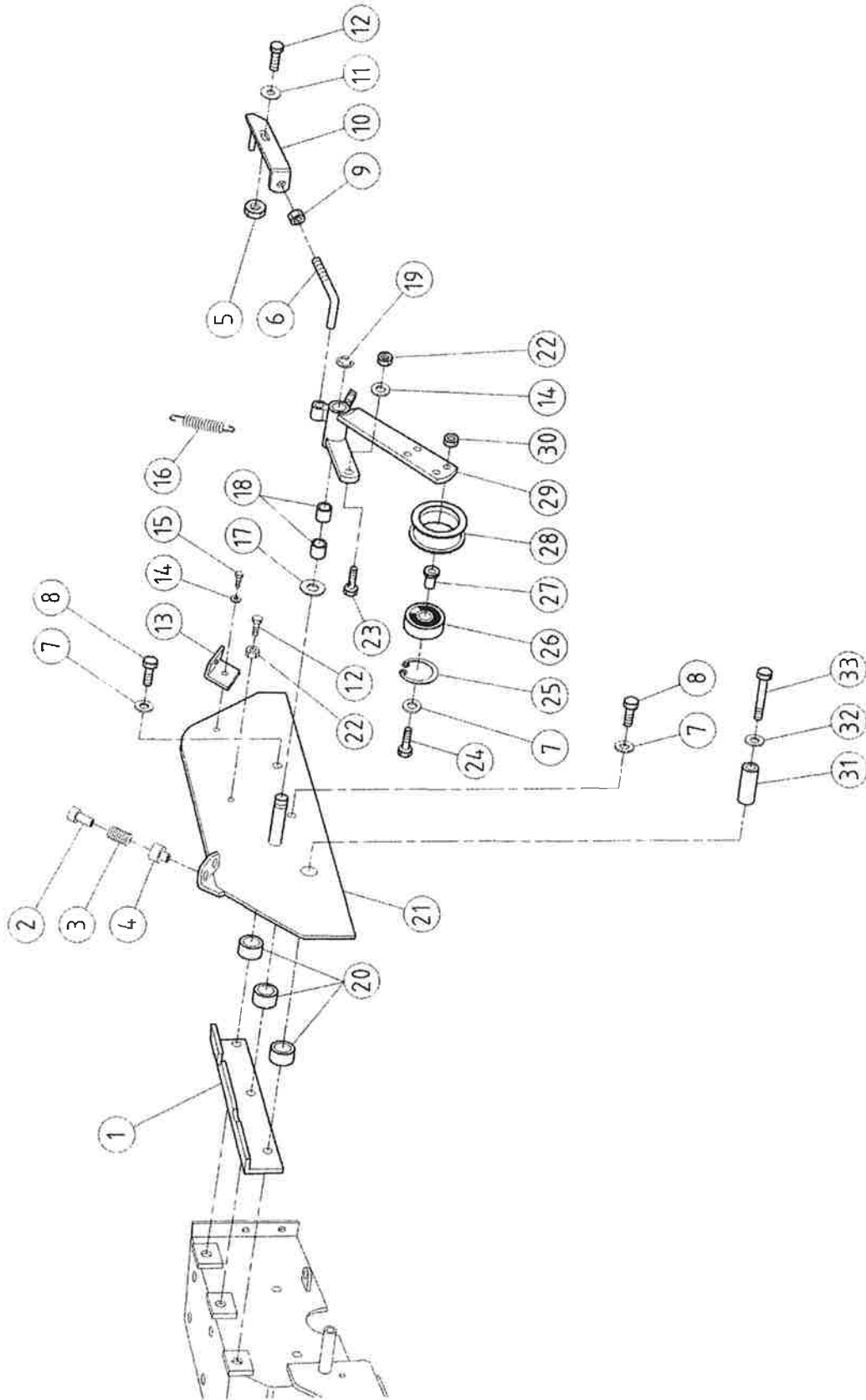
POS.	ART.NO.	DESCRIPTION	QTY.
001	CC21300	VTE M6X12 UNI 5739	2
002	CC02700	RPN U 6592 FE 6	4
003	G091600	BRAKE CONTROL COVER	1
004	CC01100	SELF-LOCKING B985 M6 H6	1
005	CC09200	DE ALTI U 5587 M6 H6	2
006	F078300	BRAKE CONTROL LEVER	1
007	CC24800	FLIEXIBLE PLUG DIN 1481 3X10	2
008	G084500	BRAKE OPENING CONTROL PIN	1
009	CC17200	VTCE M8X60 UNI 5931	2
010	F077500	BRAKE SPRING HOLDER BUSH 16X15	2
011	F073400	BRAKE SPRING 16.2X20	2
012	F079900	WIRE HOLDER DRUM	1
013	CC14600	DE LOW U 5589 M8 H5	2
014	CC25500	POINTED DOWEL BOLT VCE UNI 5927 M8X30	2
015	CC33700	DOWEL UNI 5925 M6X20 HEAD CYL.	1
016	G086200	BRAKE SUPPORT	1
017	G084600	RIGHTHAND BRAKE LEVER	1
018	G084700	LEFTHAND BRAKE LEVER	1



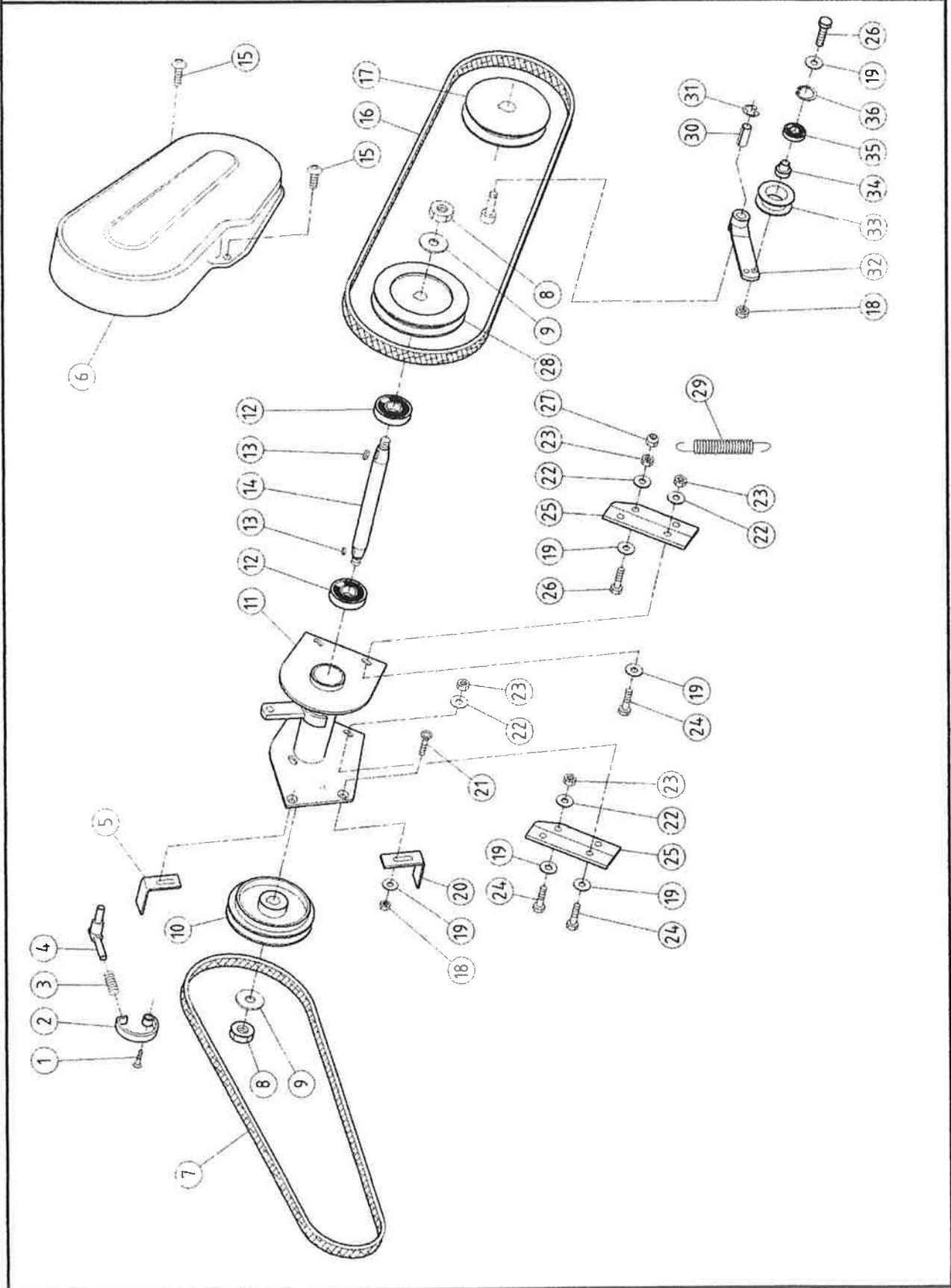
POS.	ART.NO.	DESCRIPTION	QTY.
001	T096900	SPRING CABLE ACCELERATOR 8X48	1
002	CC00400	VSP U 5933 M5X12	1
003	V014600	VSP U 5933 M5X12	1
004	CC22900	HONDA GX270 QH-Q4-OH 9HP ENGINE	1
005	CC10701	DEFLECTOR GX 160 - 200	1
006	CC29200	KEY 6.4X6.4X50	1
007	CC01800	RPN U 6592 FE 8	4
008	CC23300	VTE UNF 8.8 5116X3/4" (MM19)	4
009	G087000	ENGINE SIDE TIGHTENER SUPPORT	1
010	G092200	BELT GUIDE	1
011	CC02700	RPN U 6592 FE 6	2
012	CC24900	VTCE BUTTON ISO 7380 6X08	2
013	G092300	BUSH 30X23X10.2	1
014	CC12800	DOWEL BOLT UNI 5923 M8X10	1
015	G085600	TRAP.BELT DAYCO MEGADYNE XDV 48X420	1/2x42 1
016	CC01400	RPN U 6592 FE 10	2
017	G088600	BELT GUIDE SLIDING BLOCK	1
018	CC17000	SELF-LOCK A982 M10 H11.5	1
019	G082400	ENGINE PULLEY	1
020	CC25600	DE LOW U 5589 M6 H4	1
021	CC34200	DOWEL UNI 5923 M6X30	1
022	CC01300	WASHER GREMB U 6593 6X1 8X1.5	1



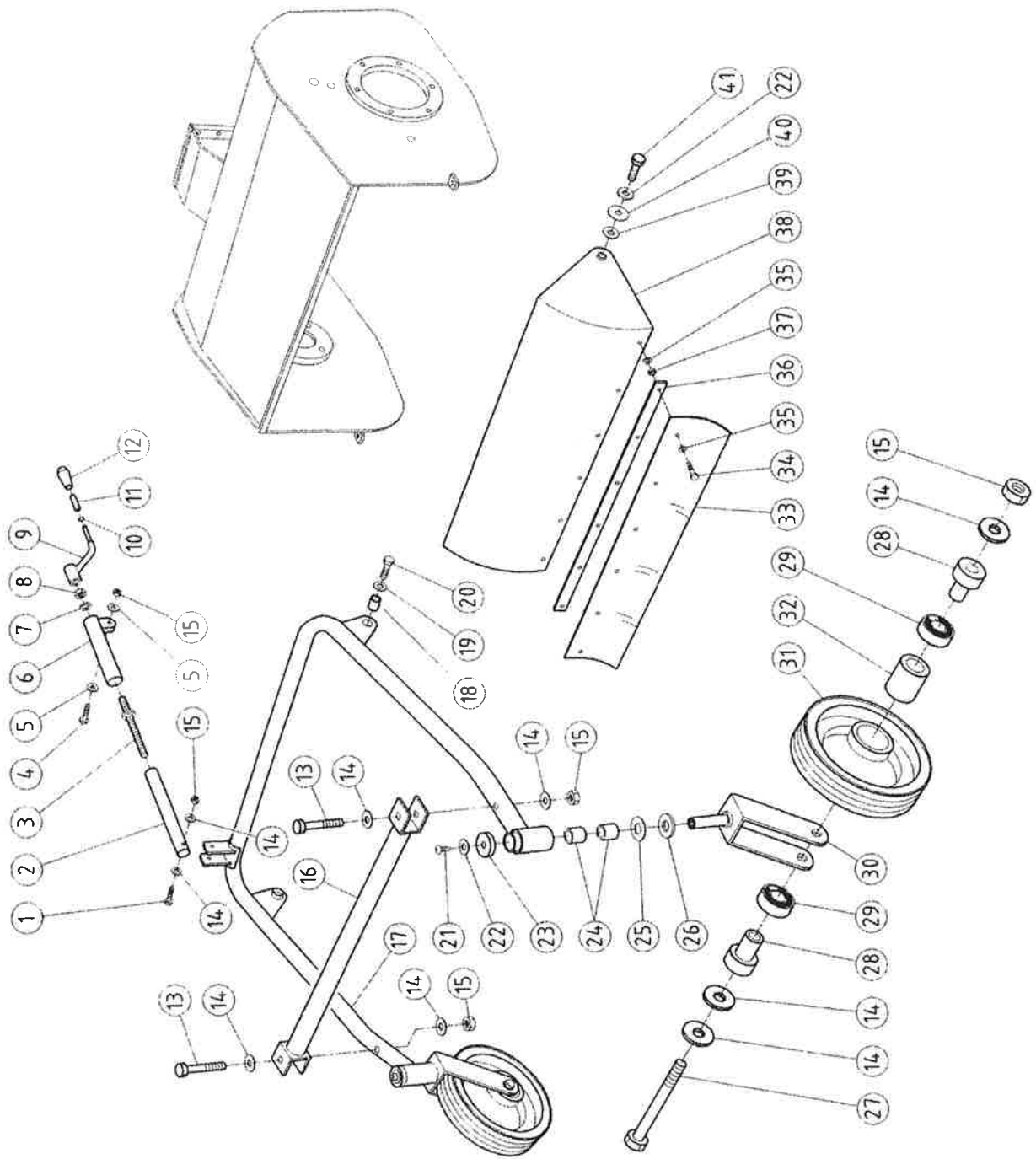
POS.	ART.NO.	DESCRIPTION	QTY.
001	CC23500	PVC KNOB MOD. 1001/P D.12	2
002	G090100	SPEED SELECTOR LEVER	1
003	G090200	GEAR LEVER	1
004	CC16700	DE NORM U 5588 M10 H8	4
005	CC16500	CRINKLED WASHER DIAM 10X21 DIN 137	4
006	CC05900	VTE M8X25 UNI 5739	2
007	CC13700	GROWER WASHER 8	2
008	G090300	SPEED INDICATOR SUPPORT	1
009	CC08300	SELF-LOCK A982 M8 H10	1
010	G091100	LEFT BRACE	1
011	CC07900	WASHER DIAM. 8 DIN 137 P	1
012	G091000	RIGHT BRACE	1
013	CC01800	RPN U 6592 FE 8	20
014	CC00800	DE ALTI U 5587 M8 H8	6
015	CC27100	VTE M8X50 UNI 5737 PART THREADED	1
016	CC32500	VTCE M10X40 UNI 5931	4
017	G092100	GEAR LEVER SUPPORT	2
018	G083700	ENGINE SUPPORT	1
019	CC21800	SELF-LOCKING BUSH PCM 121415 B	2
020	CC08900	VTE M8X16 UNI 5739	6
021	F074300	CONTROL RETURN SPRING 1" - 2"	1
022	G086400	FORWARD TIGHTENER	1
023	G091700	VIBRATION DUMPER	4
024	CC33100	SHIM PS 12.2X24X0.8	2
025	CC21200	VTE M6X18 UNI 5739	1
026	CC09200	DE ALTI U 5587 M6 H6	1
027	CC00200	DE NORM U 5588 M8 H 6.5	1
028	CC01100	SELF-LOCKING B985 M6 H6	2
029	D041900	BELT GUIDE	1
030	CC02700	RPN U 6592 FE 6	7
031	CC09500	VTE M6X14 UNI 5739	1
032	CC24900	VTCE BUTTON ISO 7380 6X08	1
033	C035300	BUSH 50X20 HOLE 28	1
034	CC05700	BEARING 12X32X10 6201- 2RS	1
035	CC05800	SEEGER 132	1
036	CC13400	VTE M8X30 UNI 5739	1
037	G091300	DRIVE BELT GUARD	1
038	CC25900	SPLASHBOARD WASHER U 6593 8X24	1
039	CC20700	VTCE M6X25 UNI 5931	6
040	CC01300	WASHER GREMB U 6593 6X1 8X1.5	1
041	CC13500	VTE M8X35 UNI 5737 PERT THREADED	6



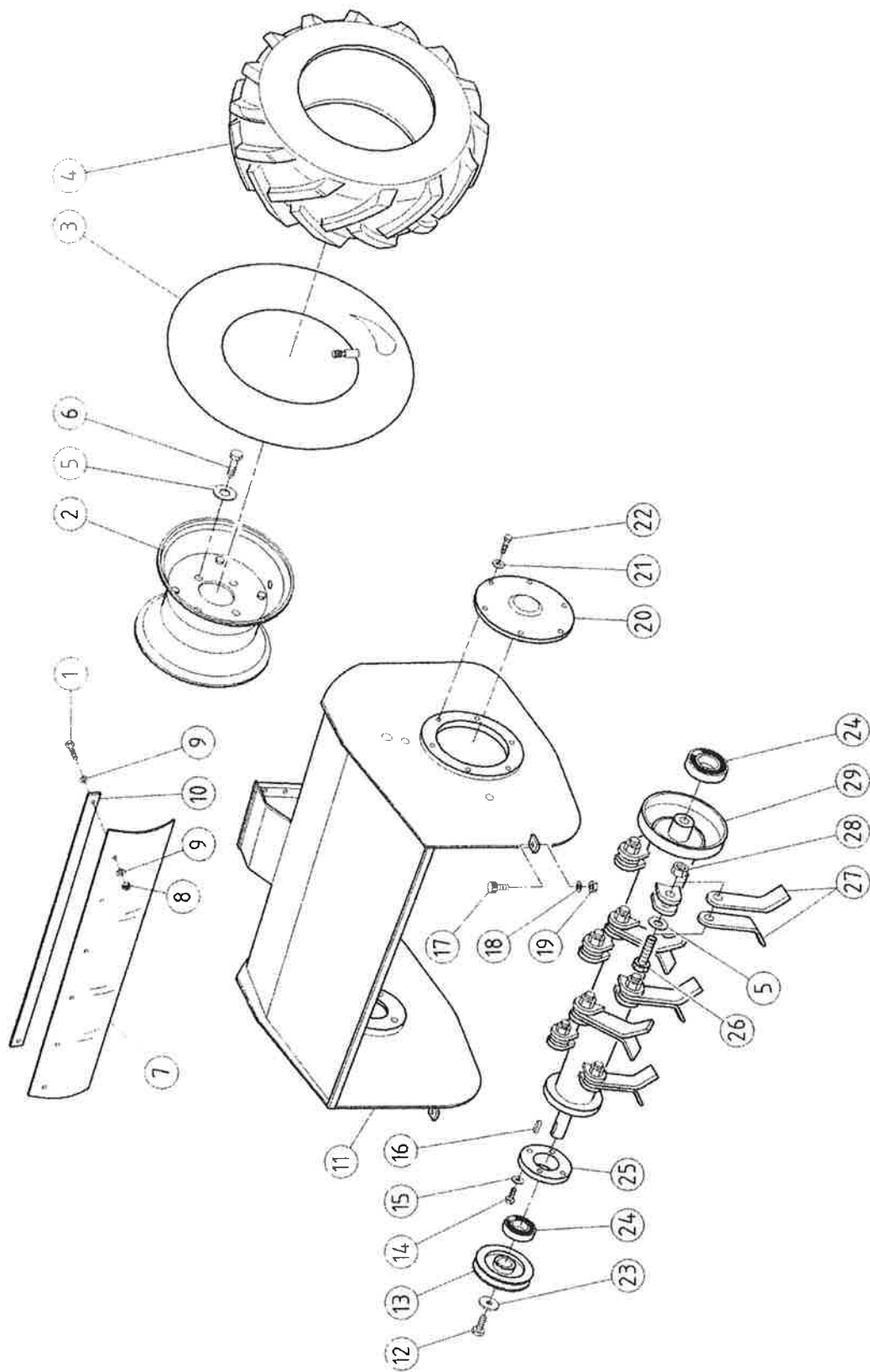
POS.	ART.NO.	DESCRIPTION	QTY.
001	G088700	TIGHTENER ROLLER SPACER SUPPORT	1
002	F084600	WIRE GUIDE 12X25	1
003	M066900	SPRING 12.5X22.5	1
004	F084500	SPRING GUIDE 15X22	1
005	CC25600	DE LOW U 5589 M6 H4	1
006	G090600	ROTOR BRAKE CONTRBL PIN	1
007	CC01800	RPN U 6592 FE 8	3
008	CC13500	VTE M8X35 UNI 5737 PERT THREADED	2
009	CC00800	DE ALTI U 5587 M8 H8	1
010	F076900	ROTOR BRAKE CONTROL	1
011	CC01300	WASHER GREMB U 6593 6X1 8X1.5	1
012	CC00100	VTCE BUTTON ISO 7380 6X16	2
013	G091200	GUARD FIXING BRACKET	1
014	CC02700	RPN U 6592 FE 6	2
015	CC21300	VTE M6X12 UNI 5739	1
016	T096800	CONTROL WIRES RETURN SPRING 10X50	1
017	CC33100	SHIM PS 12.2X24X0.8	1
018	CC21800	SELF-LOCKING BUSH PCM 121415 B	2
019	CC19800	FLEXIBLE RADIAL RING D10 UNI 7434	1
020	G089600	BUSH 22X15.5X8.5	3
021	G087100	ROLLER TIGHTENER SUPP.	1
022	CC09200	DE ALTI U 5587 M6 H6	2
023	F076600	CLAMP 7X20	1
024	CC13400	VTE M8X30 UNI 5739	1
025	CC05800	SEEGER 132	1
026	CC05700	BEARING 12X32X10 6201- 2RS	1
027	G086900	BUSH 16X17.5X8	1
028	G082500	TIGHTENER ROLLER	1
029	G086300	ROLLER ROTATION TIGHTENER	1
030	CC00200	DE NORM U 5588 M8 H 6.5	1
031	G086600	BUSH 14X24X8.2	1
032	CC07900	WASHER DIAM. 8 DIN 137 P	1
033	CC33900	VTE M8X60 UNI 5737 PART THREADED	1



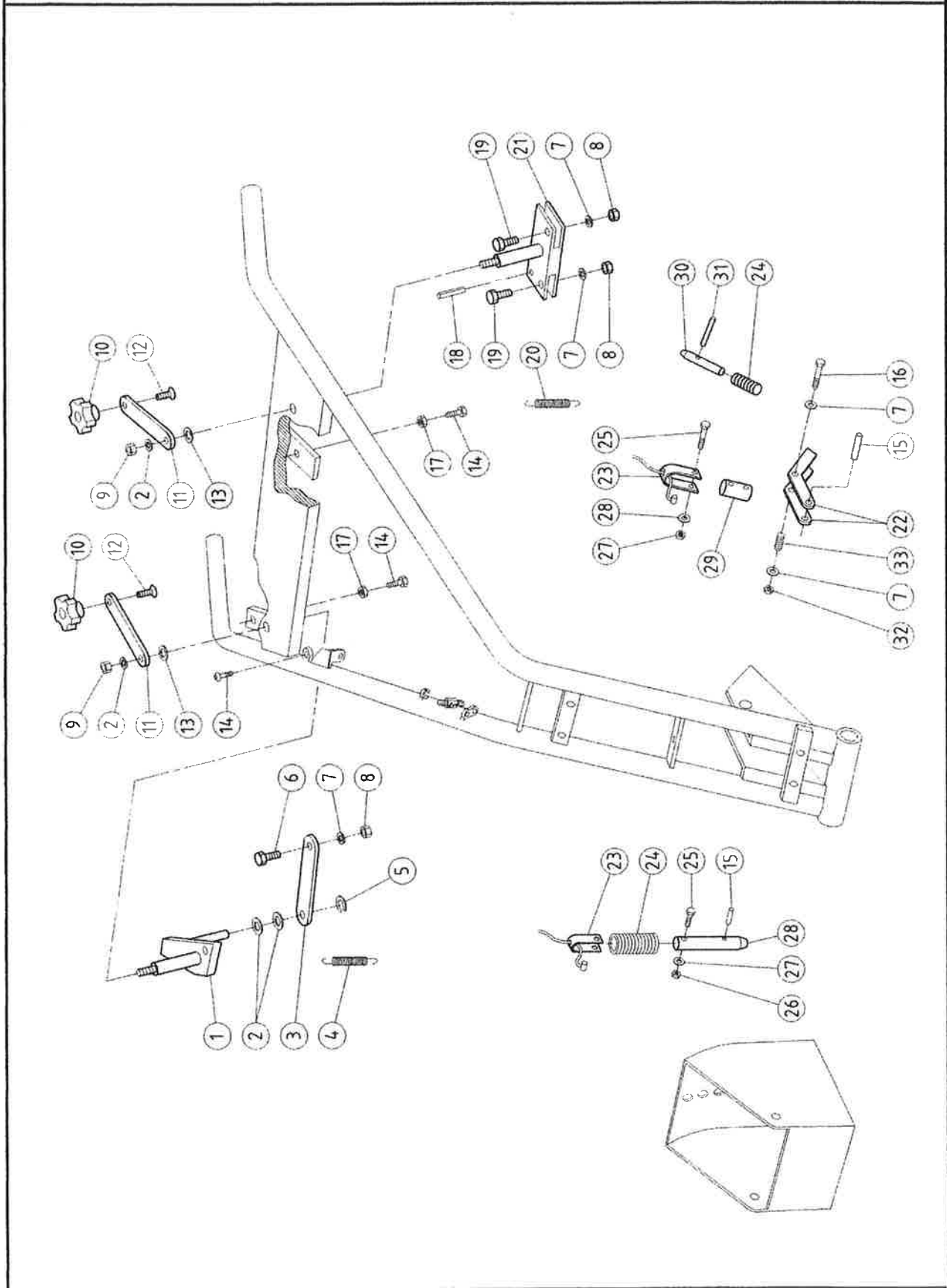
POS.	ART.NO.	DESCRIPTION	QTY.
001	CC00400	VSP U 5933 M5X12	1
002	C030700	BRAKE BLOCK	1
003	CC02900	SPRING 13X32 CM	1
004	C030800	SPRING BRAKET	1
005	F080900	BELT GUIDE	1
006	G091400	ROLLER BELT PROTECTING HOUSING	1
007	G085400	TRAP.BELT DYCO MEGADYNE XDV 58X550	5/8 x 55 1
008	CC26500	DE NORM U 5588 M12 H10	2
009	CC08000	RPN U 6592 FE 12	2
010	G082000	BRAKE SIDE PULLEY	1
011	G087500	PULLEY SUPPORT	1
012	CC22300	BEARING 20X42X12 6004 2RS1	2
013	CC15000	KEY 5X5X20 UNI 6604	2
014	G082300	SHAFT	1
015	CC01000	VTCE BUTTON ISO 7380 6X12	4
016	G085500	TRAP.BELT DYCO MEGADYNE XDV 58X430	5/8 x 43 1
017	G082900	ROLLER CONTROL PULLEY	1
018	CC00200	DE NORM U 5588 M8 H 6.5	2
019	CC01800	RPN U 6592 FE 8	11
020	G090900	BELT GUIDE BRACKET	1
021	CC02200	VSP U5933 M8X16	2
022	CC07900	WASHER DIAM. 8 DIN 137 P	8
023	CC00800	DE ALTI U 5587 M8 H8	4
024	CC10000	VTE M8X20 UNI 5739	7
025	G087700	DRIVING GEAR BRACKET	2
026	CC13400	VTE M8X30 UNI 5739	2
027	CC08300	SELF-LOCK A982 M8 H10	1
028	G083000	PULLEY	1
029	E055500	SPRING FML 50	1
030	CC05400	SELF-LOCKING BUSH PCM 121425 B	1
031	CC19800	FLEXIBLE RADIAI RING D10 UNI 7434	1
032	G086500	HOLD BELT ROLL	1
033	G082500	TIGHTENER ROLLER	1
034	G086900	BUSH 16X17.5X8	1
035	CC05700	BEARING 12X32X10 6201- 2RS	1
036	CC05800	SEEGER 132	1



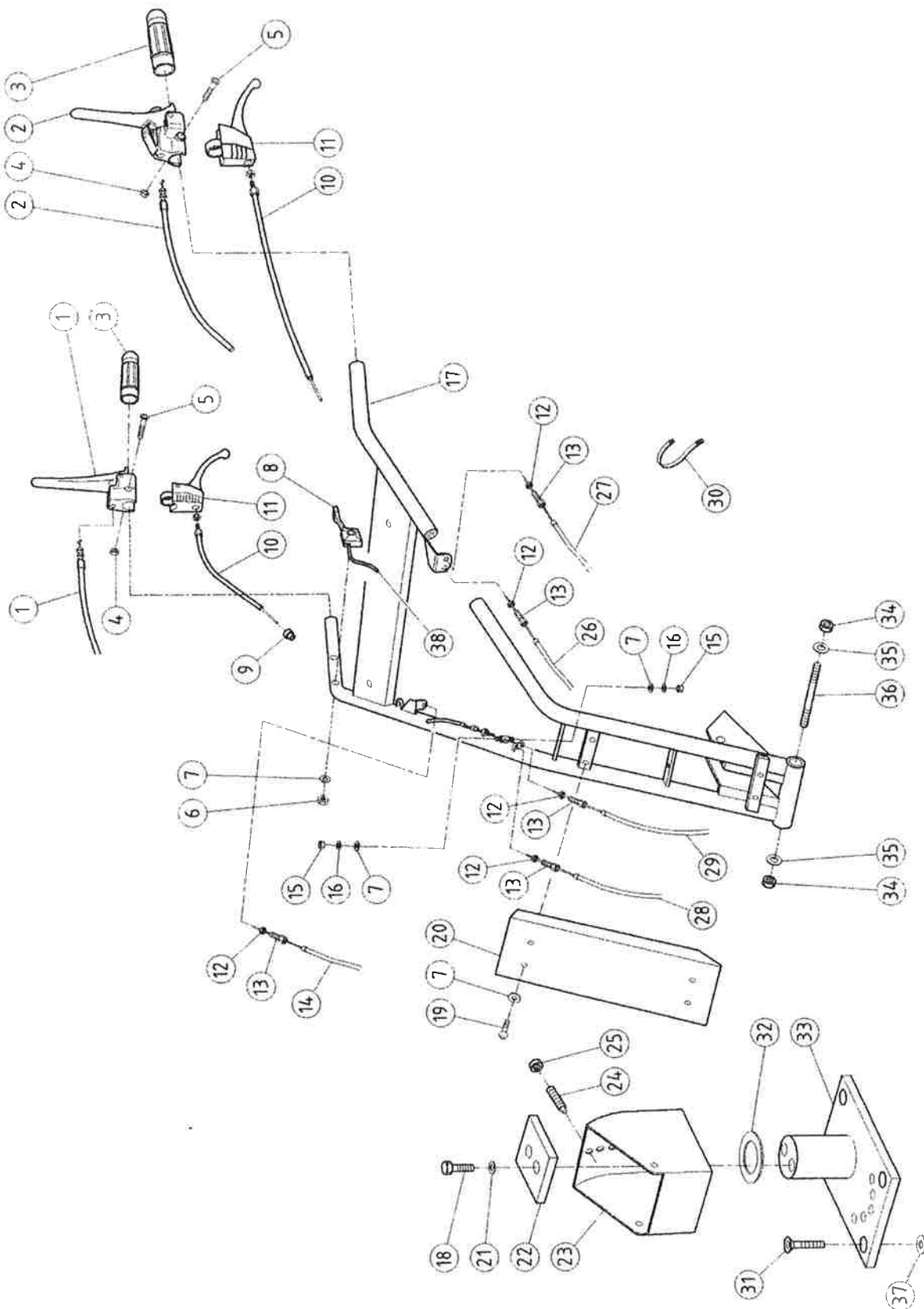
POS.	ART.NO.	DESCRIPTION	QTY.
001	CC27100	VTE M8X50 UNI 5737 PART THREADED	1
002	F084100	ADJUSTMENT POST	1
003	F084200	ADJUSTMENT SCREW	1
004	F085600	SCREW CC27200 CUT TO MM 47	1
005	CC07900	WASHER DIAM. 8 DIN 137 P	2
006	F084000	ADJUSTMENT POST BRACKET "	1
007	C033700	SHIM PS 12.2X24X0.8	1
008	CC17300	DE LOW U 5589 M12 H7	1
009	F074100	ADJUSTMENT HAND LEVER	1
010	F083700	STOP RING	1
011	F083800	BUSH DIAM 10X39.5 HOLE 8	1
012	CC18700	PVC KNOB MOD. 1001/P. D10	1
013	CC27200	VTE M8X65 UNI 5737 PART THREADED	2
014	CC01800	RPN U 6592 FE 8	12
015	CC08300	SELF-LOCK A982 M8 H10	6
016	G091500	FRONT GUARD	1
017	G086000	FRONT WHEEL SUPPORT	1
018	F076500	BUSH 16X10X26.6	2
019	CC16500	CRINKLED WASHER DIAM 10X21 DIN 137	2
020	CC25400	VTE M10X40 UNI 5737 PART. THREADED	2
021	CC01900	VTCE BUTTON ISO 7380 8X12	2
022	CC25900	SPLASHBOARD WASHER U 6593 8X24	4
023	F083900	COVER	2
024	T098300	BRONZE SELF-LUBRICATING BUSH 16X20X22	4
025	CC20800	CENTREPLATE FOR BEARING AS 1730	2
026	F072200	NYLON WASHER 16X30X3	2
027	CC33200	VTE M8X105 UNI 5737 PART THREADED	2
028	G089400	BUSH 30X34X8.5	4
029	CC10500	BEARING 20X47X14 6204-2RS1	4
030	G087900	FRONT WHEEL FORK	2
031	D041400	WHEEL GDI 099 M4 HOLE 20 HUB 52	2
032	D041401	FRONT AND REAR WHEEL SPACER	2
033	G085200	FRONT PROT. STRIP 100X746	1
034	CC12700	VTE M5X20 UNI 5739	7
035	CC04600	RPN U 6592 FE 5	14
036	G090700	FIXING PLATE FOR FIXING RUBBER STRIP	1
037	CC09800	SELF-LOCK A982 M5 H6.5	7
038	G081900	FRONT GUARD	1
039	F084400	BUSH 16X8X4	2
040	CC26300	CUP SRPING 16.1X28X0.6	2
041	CC08900	VTE M8X16 UNI 5739	2



POS.	ART.NO.	DESCRIPTION	QTY.
001	CC12700	VTE M5X20 UNI 5739	7
002	G080101	RIM	2
003	G080102	INNER TUBE	2
004	G080103	TYRE COVER	2
005	CC16500	CRINKLED WASHER DIAM 10X21 DIN 137	28
006	CC16600	VTE M10X20 UNI 5739 *	8
007	G085300	REAR PROT. STRIP 120X732	1
008	CC09800	SELF-LOCK A982 M5 H6.5	7
009	CC04600	RPN U 6592 FE 5	14
010	G090700	FIXING PLATE FOR FIXING RUBBER STRIP	1
011	G081800	FLAIL MOWER BONNET	1
012	CC25200	VTE M10X25 UNI 5739	1
013	G082900	ROLLER CONTROL PULLEY	1
014	CC08900	VTE M8X16 UNI 5739	4
015	CC01800	RPN U 6592 FE 8	4
016	CC05200	KEY 8X7X30 UNI 6604	1
017	CC23700	VIBRATION DAMPER P20X7 SP 16 6MA SH70 283/010	2
018	CC07000	GROWER WASHER U 1751 NORM 6	2
019	CC01100	SELF-LOCKING B985 M6 H6	2
020	F074000	ROLLER BRACKET LEFT COVER	1
021	CC02700	RPN U 6592 FE 6	6
022	CC09500	VTE M6X14 UNI 5739	6
023	CC24700	SPACIAL WASHER 10X40X5	1
024	CC04900	BEARING 25X52X15 6205- 2RS1	2
025	F071500	RIGHT ROLLER BRACKET	1
026	F083000	SREW M10X36 PART. SMOOTH 24MM	20
027	F075400	FLAIL	40
028	CC17000	SELF-LOCK A982 M10 H11.5	20
029	G081700	ROLLER	1



POS.	ART.NO.	DESCRIPTION	QTY.
001	G088500	EMERGENCY BRAKE ELEMENT	1
002	CC01800	RPN U 6592 FE 8	4
003	G090400	BRAKE CABLE CLAMP PLATE	1
004	T096900	SPRING CABLE ACCELERATOR 8X48	1
005	CC29800	RADIAL FLEXIBLE RING D6 UNI 7434	1
006	F076600	CLAMP 7X20	1
007	CC02700	RPN U 6592 FE 6	5
008	CC09200	DE ALTI U 5587 M6 H6	3
009	CC08300	SELF-LOCK A982 M8 H10	2
010	CC12600	HAND WHEEL DIAM 55 M8 MOD. 10701F	2
011	G090000	CONTROL LEVER	2
012	CC02200	VSP U5933 M8X16	2
013	CC08000	RPN U 6592 FE 12	2
014	CC00100	VTCE BUTTON ISO 7380 6X16	3
015	CC22800	FLEXIBLE PLUG DIN 1481 5X20	2
016	CC14100	VTE M6X45 UNI 5737 PART THREADED	1
017	CC25600	DE LOW U 5589 M6 H4	2
018	CC24800	FLIEXIBLE PLUG DIN 1481 3X10	2
019	T092100	KEY CLAMP 10X20 M6	2
020	T096800	CONTROL WIRES RETURN SPRING 10X50	1
021	G088400	HANDLEBAR ADJUSTMENT CONTROL ELEMENT	1
022	F080100	HANDLE ADJ. LEVER (EX F075603)	2
023	G089900	FORK	2
024	F076100	SPRING 12.5X38	2
025	CC21400	VTCE M5X25 UNI 5931	2
026	CC09800	SELF-LOCK A982 M5 H6.5	2
027	CC04600	RPN U 6592 FE 5	2
028	G089500	PIN 12X96	1
029	G090800	PIN 12X36	1
030	F076000	PIN 12X98	1
031	CC22700	FLEXIBLE PLUG DIN 1481 5X35	1
032	CC16900	SELF-LOCKING A982 M6 H8	1
033	C032900	SPRING DIAM.8.5X26	1



POS.	ART.NO.	DESCRIPTION	QTY.
001	G087300	YELLOW TUGHTENER LEVER	1
002	G089300	ROTOR ENGAGEMENT CABLE	1
003	T096200	TUBE GRIP DIAM 26 1MA08010	2
004	CC01100	SELF-LOCKING B985 M6 H6	2
005	CC21500	VTCE M6X55 UNI 5931	2
006	CC16900	SELF-LOCKING A982 M6 H8'	1
007	CC02700	RPN U 6592 FE 6	7
008	T096000	THROTTLE 1AG00215	1
009	F079500	SHEATH BUSCHING 8 03806060	2
010	G087200	CABLE MM 1100 WIRE MM 1315	2
011	F079300	SINGLE LEVER STROKE 25 D.25/28 1 LA00010	2
012	CC25600	DE LOW U 5589 M6 H4	5
013	F079800	ADJUSTER M6X40 CH. 10 HOLE 8.3 0384214	5
014	G088800	EMERGENCY BRAKE CABLE	1
015	CC09200	DE ALTI U 5587 M6 H6	2
016	CC07000	GROWER WASHER U 1751 NORM 6	2
017	G088000	HANDLEBAR	1
018	CC08900	VTE M8X16 UNI 5739	2
019	CC24900	VTCE BUTTON ISO 7380 6X08	4
020	G090500	HANDLEBAR GUARD	1
021	CC07900	WASHER DIAM. 8 DIN 137 P	2
022	G089800	HANDLEBAR SUPPORT FIXING COVER	1
023	G087600	HANDLEBAR SUPPORT	1
024	CC26200	DOEWL BOLT UNI 5925 M8X25 CYL. HEAD	1
025	CC00800	DE ALTI U 5587 M8 H8	1
026	G089100	HANDLEBAR HEUGHT ADJUSTMENT CABLE	1
027	G089200	HANDLEBAR SIDE-ADJUSTMENT CABLE	1
028	G088900	FORWARD LEVER AND BRAKE CABLE	1
029	G089000	BRAKE CONTROL CABLE	1
030	CC24500	BLACK PLASTIC CABLE STRAP	1
031	CC01600	VSP U 5933 M8X20	4
032	CC07100	SHIM PS 42X52X0.5	1
033	G087800	LOWER SUPPORT	1
034	CC17000	SELF-LOCK A982 M10 1-111.5	2
035	CC16500	CRINKLED WASHER DIAM 10X21 DIN 137	2
036	F077900	TIE-ROD 10X146	1
037	CC25900	SPLASHBOARD WASHER U 6593 8X24	4
038	T095900	ACCELER. CABLE SHEATH MM 1010 WIRE MM 140	1