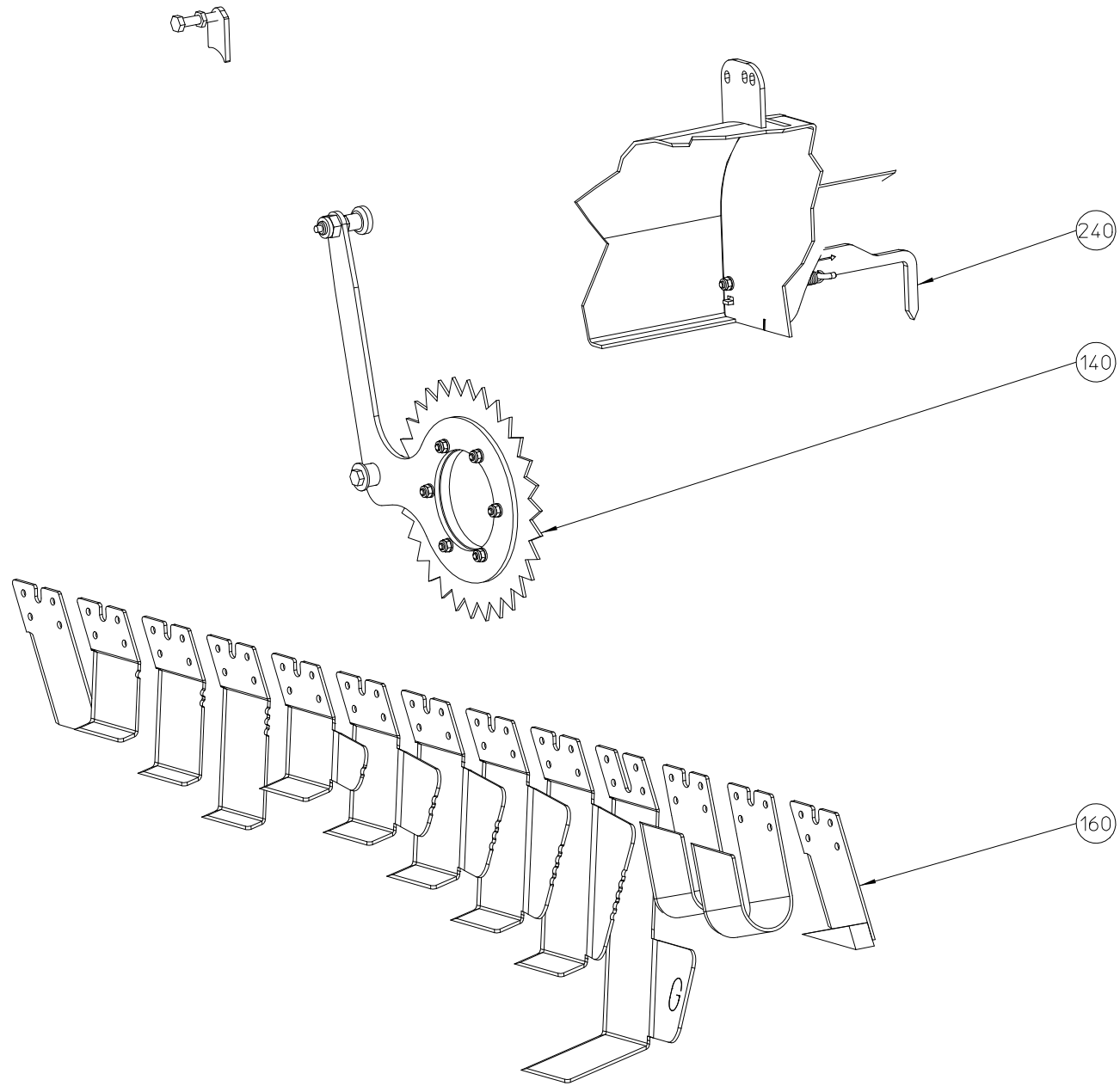
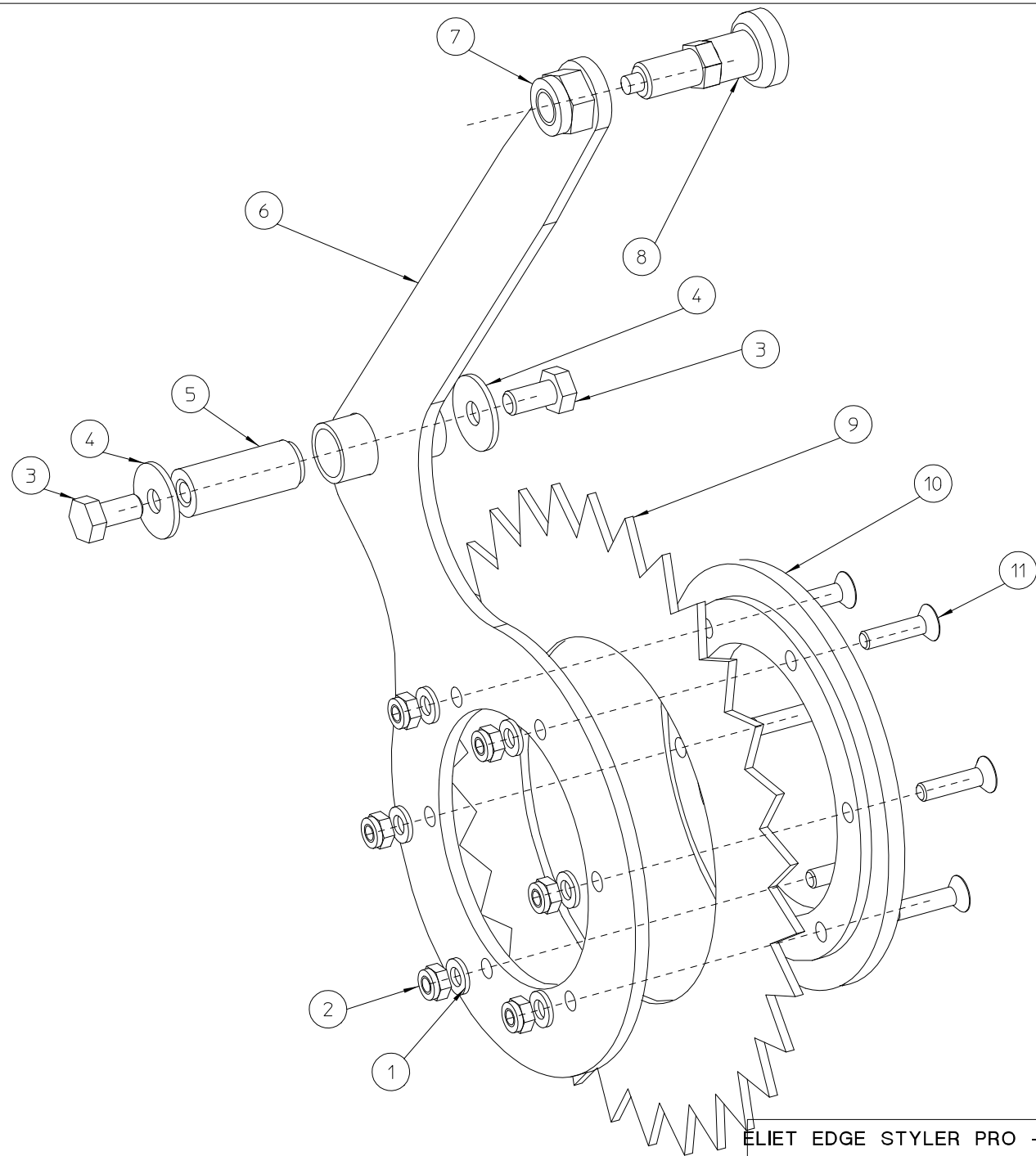


ELIET EDGE STYLER STD					
NO	MMA-01.121.200	REV	1	DATE	2009/03/27



ELIET EDGE STYLER STD					
NO	MMA-01.121.200	REV	1	DATE	2009/03/27



ELIET EDGE STYLER PRO -- DIRECTION GUIDE

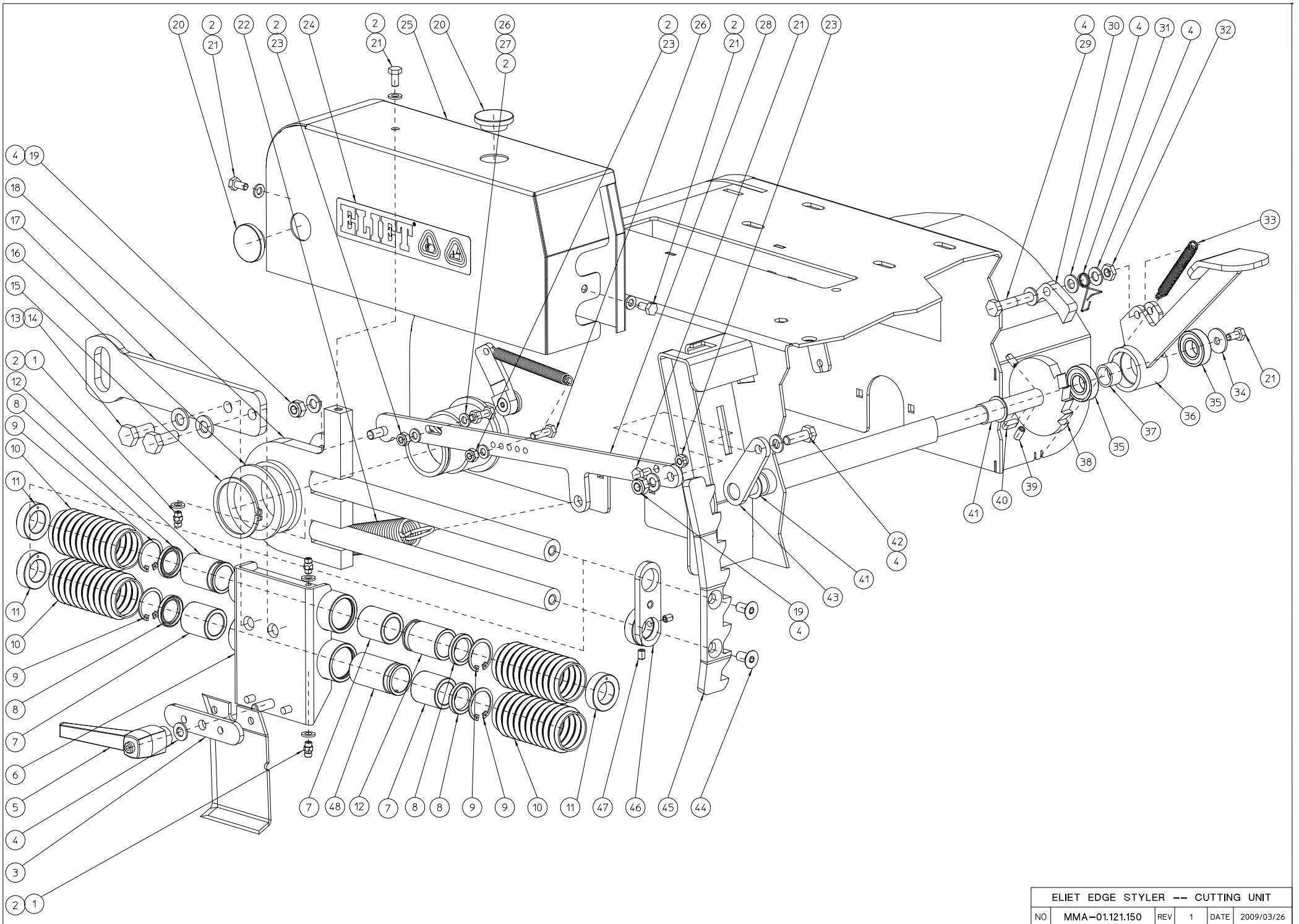
NO	MMA-01.121.140	REV	1	DATE	2009/03/11
----	----------------	-----	---	------	------------

NOMENC: MMA-01.121.140

Pos	Qté	Nom	Description	Matériau
1	6	BS-531.000.600	DIN 125 RONDELLE M6	
2	6	BS-502.000.600	DIN 985 ECROU NYLON M6	
3	2	BS-512.000.816	DIN 933 VIS M8X16	
4	2	BS-532.008.254	RONDELLE DE CARROSSERIE M8X25X2	
5	1	MPA-01.121.115	SCHARNIERTAP INSTEEKSCHIJF	
6	1	MPA-01.121.155	POSITIOONERINGSPLAAT	S235J2G3
7	1	BS-502.001.200	DIN 985 ECROU NYLON M12	
8	1	BN-000.212.550	BLOKEERSTIFT A-M12X1,5	
9	1	MPA-01.121.160	GETANDE SCHIJF 30 T	
10	1	MPA-01.121.150	ERTALONRING	NYLON
11	6	BS-522.100.625	DIN 7991 VIS A TETE FRAISEE M6X25	

ELIET EDGE STYLER PRO -- DIRECTION GUIDE

NO	MMA-01.121.140	REV	1	DATE	2009/03/11
----	-----------------------	-----	---	------	------------



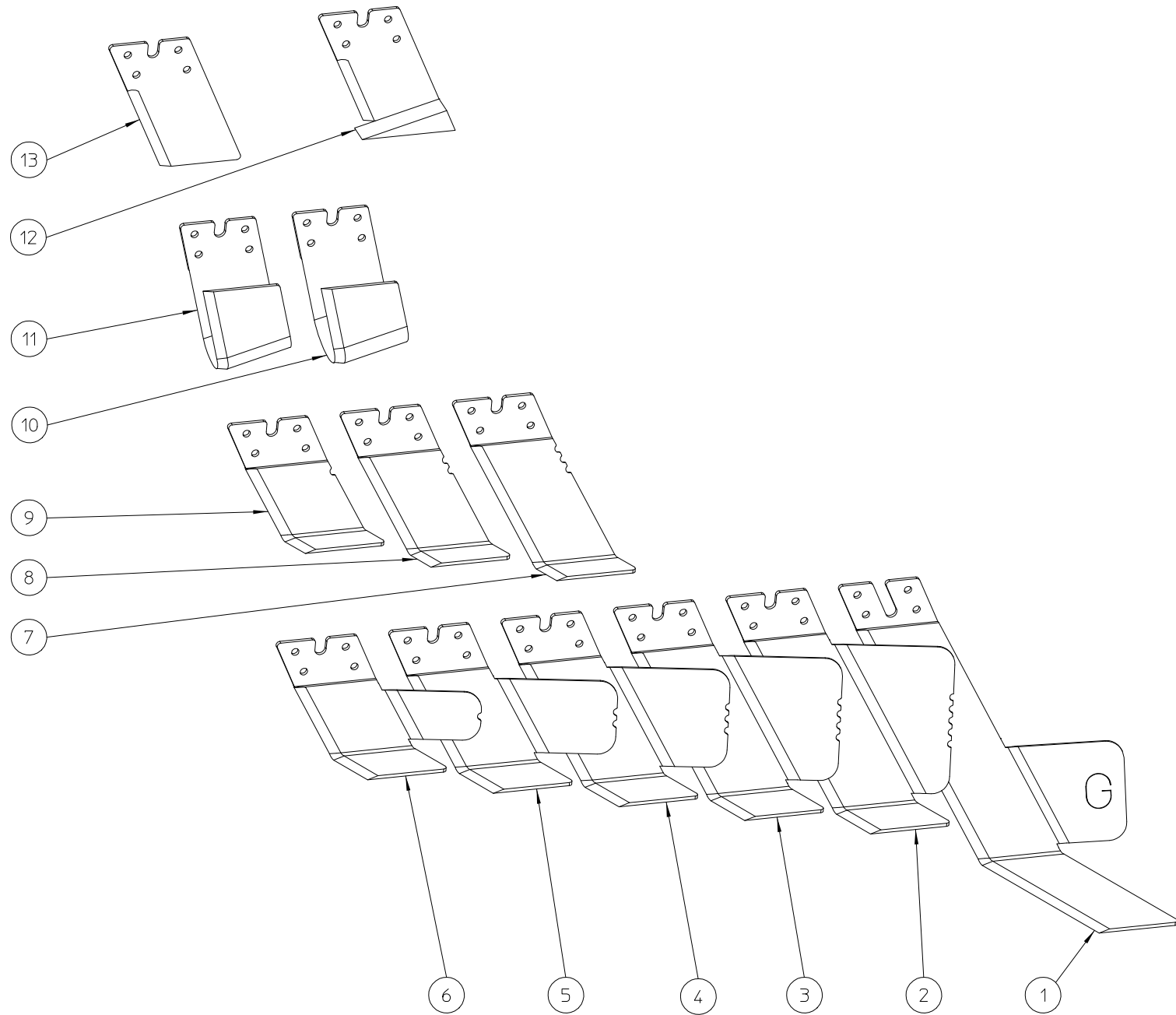
ELIET EDGE STYLER -- CUTTING UNIT					
NO	MMA-01.121.150	REV	1	DATE	2009/03/26

NOMENC: MMA-01.121.150

Pos	Qté	Nom	Description	Matériau
1	3	BY-100.106.100	GRAISSEUR M6	
2	9	BS-531.000.600	DIN 125 RONDELLE M6	
3	1	MPA-01.121.040	SLUITPLAATJE MESSEN	
4	7	BS-531.000.800	DIN 125 RONDELLE M8	
5	1	BN-530.108.800	VERSTELBAREKLEMHENDEL M8 INWENDIG	
6	1	MPA-01.121.045	LAGERING MESSEN	
7	3	BL-866.010.010	BAGUE EN BRONZE FMTC20	
8	4	BR-302.120.284	BOURRAGE 20X28X4	
9	4	BB-002.000.280	CIRCLIPS INTERIEUR DIA:28	
10	4	BR-000.811.930	CAOUTCHOUC MOUFFLE VAJ 119	
11	3	BR-111.201.010	ERTALON 6SA 33X19,9X10	
12	2	MPA-01.121.105	TUSSENRING 40 LAGER	
13	2	BS-531.001.000	DIN 125 RONDELLE M10	
14	2	BS-512.001.025	DIN 933 VIS M10X25	
15	1	BB-001.000.500	BORGVEER DIA.50X2-UITW. DIN 471	
16	2	BR-112.503.400	NYLONLAGER 50X56/34	
17	1	MPA-01.121.050	DRIJFSTANG	
18	1	MPA-01.121.060	LAGERING MESGELEIDING	
19	2	BS-502.000.800	DIN 985 ECROU NYLON M8	
20	2	BR-500.102.500	CARROSSERIESTOP 25X0,8X2,00 MM	
21	5	BS-512.000.612	DIN 933 VIS M6X12	
22	1	BV-919.000.020	RESSORT DE TRACTION	
23	3	BS-502.000.600	DIN 985 ECROU NYLON M6	
24	1	BQ-505.010.380	ZELFKLEVER AFSCHERMING MESSEN	
25	1	MPA-01.121.035	AFSCHERMING MESSEN	
26	2	BS-512.000.620	DIN 933 VIS M6X20	
27	1	BS-501.000.600	DIN 934 ECROU M6	
28	1	MPA-01.121.070	VERBINDINGSLAT PEDAAL	
29	1	BS-511.000.841	DIN 931 VIS M8X45	
30	1	MPA-01.121.165	RATEL	
31	1	BV-922.000.010	TORSIEVEER RATEL	
32	1	BS-501.900.800	DIN 439 1/2 ECROU M8	
33	1	BV-011.009.007	TREKVEER 1X9X75	
34	1	BS-532.006.224	RONDELLE DE CARROSSERIE M6X22X2 DIN 440	
35	2	BL-001.503.203	DIN 625 ROUL.NTN 6002 2RZ	
36	1	MPA-01.121.065	KOPPELINGSPEDAAL	
37	1	MPA-01.121.030	TUSSENRING	
38	1	MPA-01.121.170	TANDWIEL KOPPELING	
39	2	BS-023.000.612	DIN 916 VIS DE PRESSION M6X12	
40	1	BB-341.050.516	SPIE 5X5X16 DIN 6880	
41	2	BR-112.152.100	BAGUE NYLON AVEC EP (23X18X15X1+20)	
42	1	BS-512.000.825	DIN 933 VIS M8X25	
43	1	MPA-01.121.075	STEUN KOPPELINGSPEDAAL	
44	2	BS-522.100.816	DIN 7991 VIS A TETE FRAISEE M8X16	
45	1	MPA-01.121.135	TANDLAT	
46	1	MPA-01.121.095	STEUN AFSCHERMING MESSEN	
47	2	BS-023.000.608	DIN 916 VIS DE PRESSION M6X8	
48	1	MPA-01.121.100	TUSSENRING 50 LAGER	

ELIET EDGE STYLER --- CUTTING UNIT

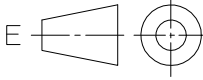
NO	MMA-01.121.150	REV	1	DATE	2009/03/26
----	----------------	-----	---	------	------------

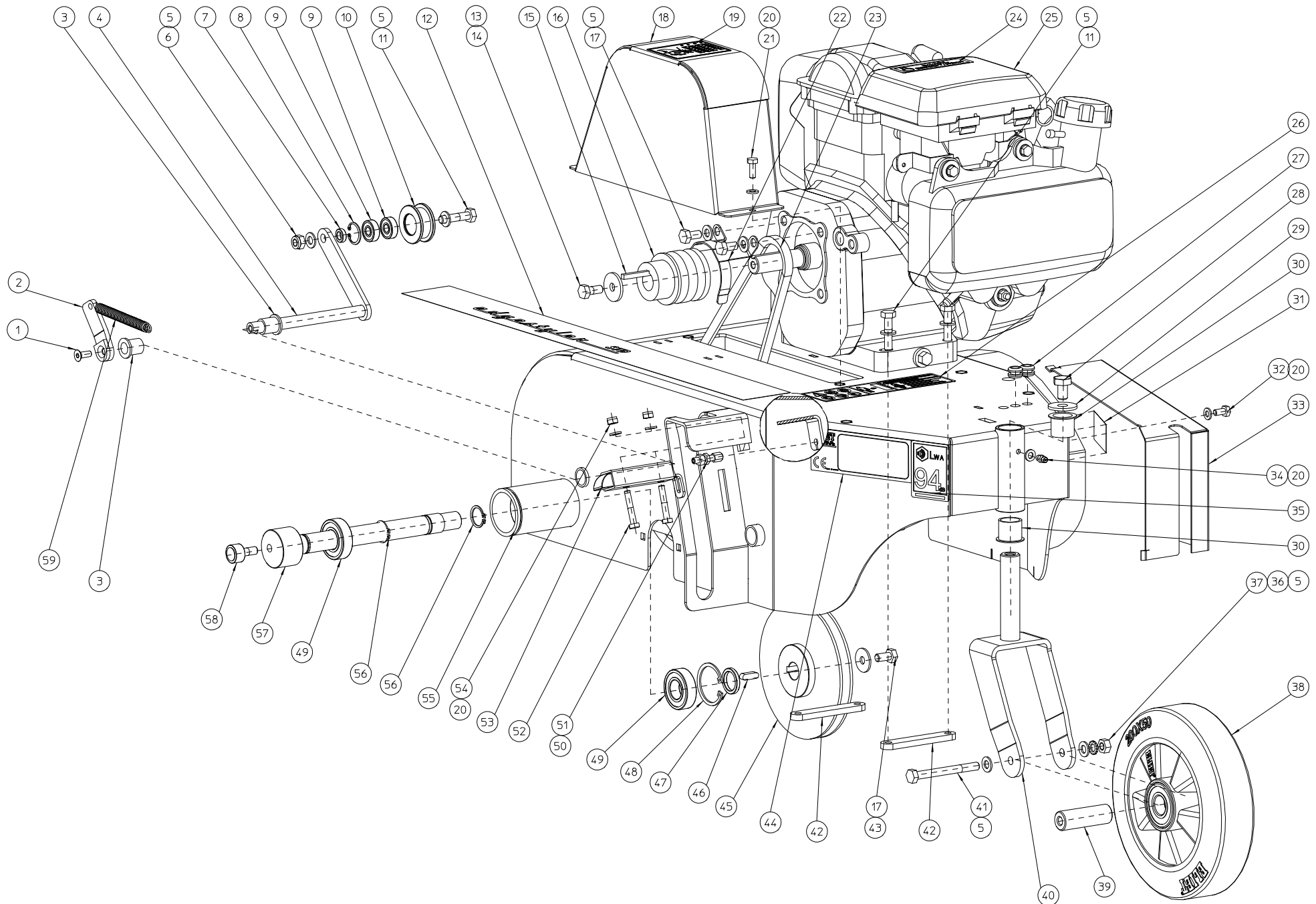


ELIET EDGE STYLER -- BLADE KIT					
NO	MMA-01.121.160	REV	1	DATE	2009/03/11

NOMENC: MMA-01.121.160

Pos	Qté	Nom	Description	Matériau
1	1	BU-104.103.400	GOLF BUNKER MES-WD 130/150	
2	1	BU-104.100.500	STD MES TYPE 5V-WD 10CM	
3	1	BU-104.100.400	STANDAARDMES TYPE 4V WD-8CM	
4	1	BU-104.100.300	STANDAARDMES TYPE 3V WD-6CM	
5	1	BU-104.100.200	STANDAARDMES TYPE 2VV WD-4CM	
6	1	BU-104.100.100	STANDAARDMES TYPE 1V WD-2CM	
7	1	BU-104.103.300	HOEKMES TYPE 3V-WD 6CM	
8	1	BU-104.103.200	HOEKMES TYPE 2V-WD 4CM	
9	1	BU-104.103.100	HOEKMES TYPE 1V-WD 2CM	
10	1	BU-104.102.200	U-MES 50MM-WD 5CM	
11	1	BU-104.102.100	U-MES 35MM-WD 5 CM	
12	1	BU-104.104.100	BORDUURMES EDGESTYLER WD-3CM	
13	1	BU-104.101.100	RECHT MES WD 4 CM	

Machine EDGE_STYLER		N° of Pieces ✓ ()		Overall Tot ISO 2768 - fH	
TITLE ELIET WWW.ELIET.EU		ELIET EDGE STYLER -- BLADE KIT MMA-01.121.160			DRWNR
MATERIAL		FORMAT A4H	SCALE 1:1	REVISION 1	NAME koen
		ELIET N.V. - Zwevegemstraat 136 - B-8553 OTEGEM Tel.: +32/56/77.70.88 - Fax.: +32/56/77.5213		SHEET 2 of 2	DATE 2009/03/11



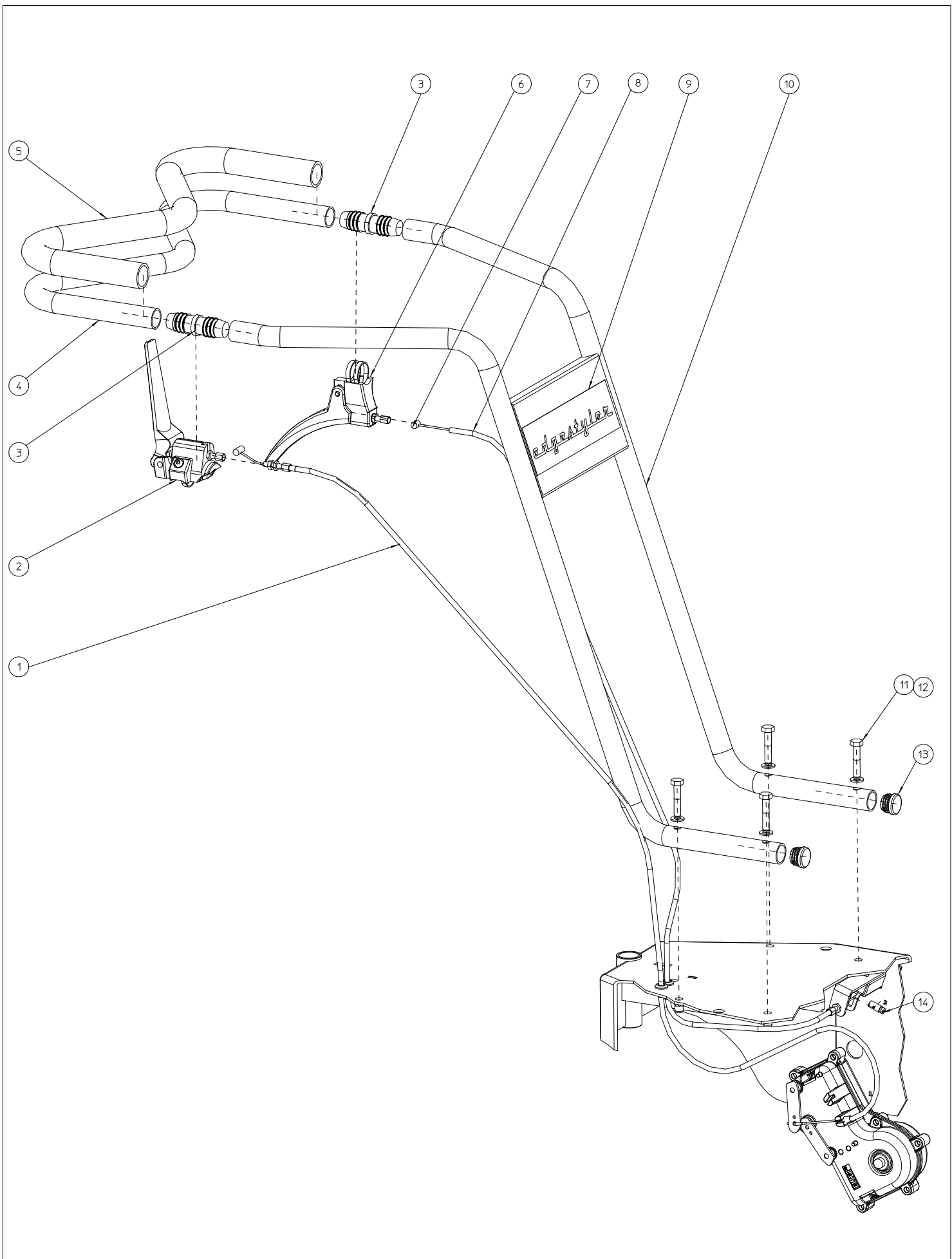
ELIET EDGE STYLER STD -- CHASSIS				
NO	MMA-01.121.210	REV	1	DATE
				2009/03/30

NOMENC: MMA-01.121.210

Pos	Qté	Nom	Description	Matériau
1	1	BS-522.100.616	DIN 7991 VIS A TETE FRAISEE M6X16	
2	1	MPA-01.121.085	HEFBOOMSTEUN RIEMSPANNER	
3	2	BR-112.122.100	GLIJLAGER 12X16X19/2	
4	1	MPA-01.121.080	HEFBOOM RIEMSPANROL	
5	10	BS-531.000.800	DIN 125 RONDELLE M8	
6	1	BS-502.000.800	DIN 985 ECROU NYLON M8	
7	1	MPA-01.121.090	AFSTANDSBUS 4,5 SPANROL	
8	1	BB-002.000.220	CIRCLIPS DIA.22 DIN472	
9	2	BL-000.802.203	DIN 625 ROULEZO 608 ZZ	
10	1	BA-599.006.201	SPANROL DIA.32	
11	5	BS-511.000.835	DIN 931 VIS M8X35	
12	1	BQ-501.120.060	KLEVER EDSTYLER STD 6X61	
13	1	BS-532.008.306	RONDELLE DE CARROSSERIE M8X30X3	
14	1	BS-512.040.819	6KT BOUT UNF 5/16X3/4	
15	1	BB-342.050.544	DIN 6880 CLAVETTE 4.7X4.7X44	
16	1	BA-564.005.021	DUBBELE V-RIEMSCHIJF/SPZ-DW50	
17	3	BS-512.000.816	DIN 933 VIS M8X16	
18	1	MPA-01.121.025	AFSCHERMING AANDRIJVING	
19	1	BQ-505.010.370	KLEVER-CE AANDACHT 70X56 MM	
20	6	BS-531.000.600	DIN 125 RONDELLE M6	
21	2	BS-512.000.616	DIN 933 VIS M6X16	
22	1	MPA-01.121.230	RIEMVANGER	S235J2G3
23	1	BA-521.109.370	V-RIEM XPZX937 QUAD-POWER	
24	1	BQ-505.010.020	AUT.MAX 2800T/MIN 90X25	
25	1	BM-202.004.000	MOTEUR 4 HP HONDA GC 135	
26	1	BQ-505.010.171	AUTOCOLLANT DE SECURITE	
27	2	BR-000.211.308	DOORVOERTULE DIA.8XDIA.10XDIA.15X3X DIKTE 10	
28	1	BS-512.001.016	DIN 933 VIS M10X16	
29	1	BS-532.010.305	RONDELLE DE CARROSSERIE M10X30X2.5	
30	2	BR-112.202.100	BAGUE NYLON AVEC EP (29/24/20X1+20	
31	1	BQ-501.010.010	AUT.ELIET 65X30	
32	1	BS-512.000.612	DIN 933 VIS M6X12	
33	1	MPA-01.121.175	AFSCHERMING KOPPELINGSPEDAAL	S235J2G3
34	1	BY-100.106.100	GRAISSEUR M6	
35	1	BQ-505.112.094	ZELFKLEVER 94 DB	
36	1	BS-534.000.800	DIN 6798 RONDELLE ELASTIQUE M8	
37	1	BS-501.000.800	DIN 934 ECROU M8	
38	1	BW-320.020.000	ROUE ALUMINIUM 200/50-100	
39	1	MPA-01.121.120	AS ZWENKWIEL	
40	1	MPA-01.121.250	VORK ZWENKWIEL	S235J2G3
41	1	BS-511.000.848	DIN 931 VIS M8X80	
42	2	MPA-01.121.255	OPSPANPLAAT MOTOR	
43	1	BS-532.008.254	RONDELLE DE CARROSSERIE M8X25X2	
44	1	BQ-505.010.010	AUT.ELIET CE 120X30	
45	1	BA-564.714.001	V-RIEMSCHIJF SPZ 140	
46	1	BB-351.060.620	DIN 6885A CLAVETTE ARRONDIE 6X6X20	
47	1	MPA-01.121.270	TUSSENRING V_RIEMSCHIJF	S235J2G3
48	1	BB-002.000.420	CIRCLIPS INTERIEUR DIA:42	
49	2	BL-002.004.203	DIN 625 ROUL.NTN 6004 2RZ	
50	1	BS-501.000.600	DIN 934 ECROU M6	
51	1	BK-610.100.600	VIS DE REGLAGE GAINÉ M6X34MM	
52	2	BS-511.000.635	DIN 931 VIS M6X35	
53	1	BO-360.504.180	VEERGRENDEL MET HAAKSE TREKPEN OP 90° FFM.R1615.G	
54	2	BS-502.000.600	DIN 985 ECROU NYLON M6	
55	1	MPA-01.121.240	GESTEL HOBBY	S235J2G3
56	2	BB-001.000.200	CIRCLIPS EXTERIEUR DIA:20	
57	1	MPA-01.121.210	AS EXENTRIEK	
58	1	BL-620.801.905	NOKKENROL KR 19 LL DIA.19XM8	
59	1	BV-011.512.500	RESSORT D'EXTENSION 1,5X12,5X110	

ELIET EDGE STYLER STD -- CHASSIS

NO	MMA-01.121.210	REV	1	DATE	2009/03/30
----	----------------	-----	---	------	------------



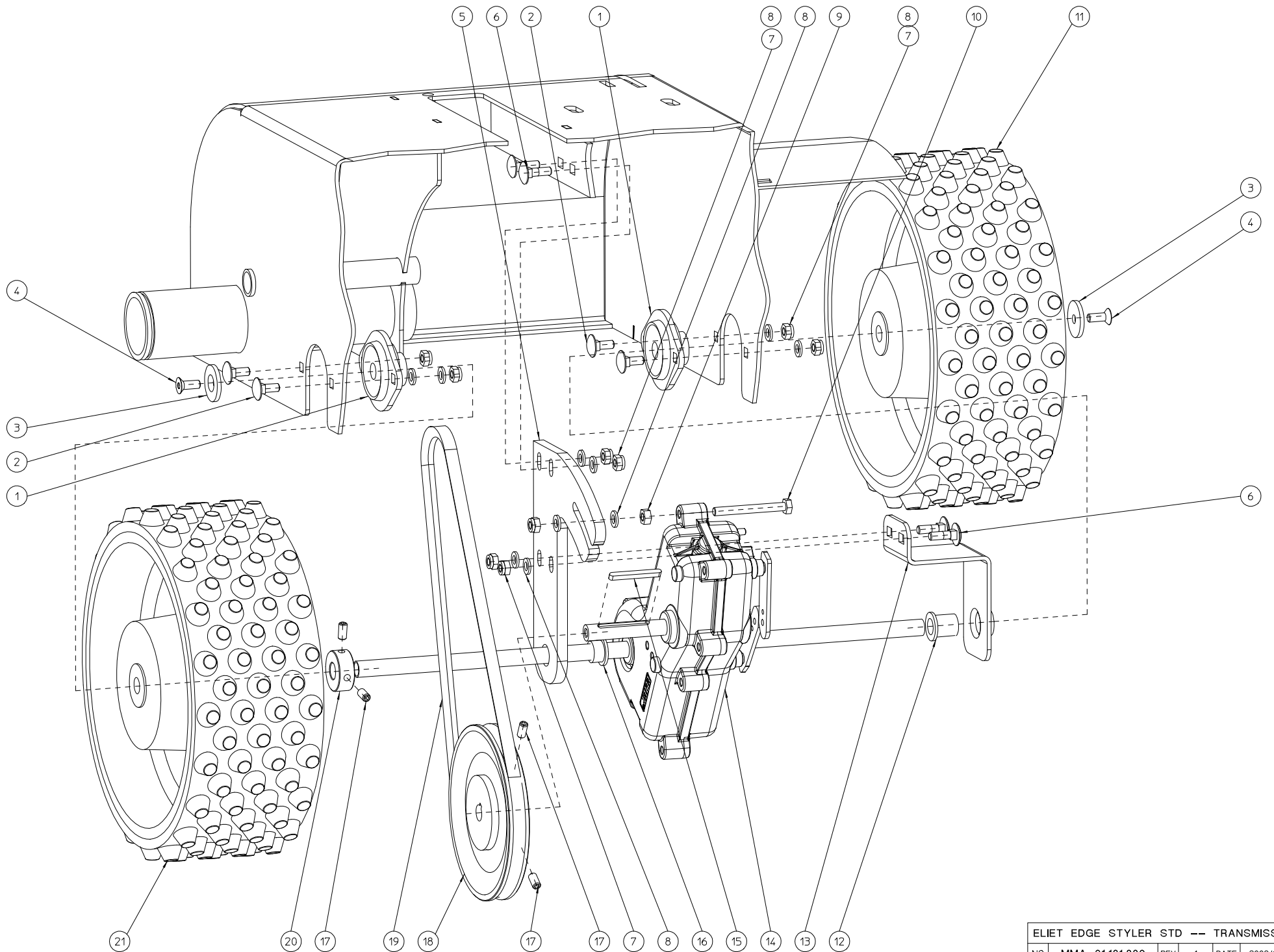
ELIET EDGE STYLER STD -- STEER					
NO	MMA-01.121.220	REV	1	DATE	2009/03/11

NOMENC: MMA-01.121.220

Pos	Qté	Nom	Description	Matériau
1	1	BK-153.181.440	KABEL DODEMANSSHANDEL	
2	1	BN-332.500.140	DODEMANSHANDEL SACCON-LASC55R01T STROKE	25-KLEM 25 MM
3	2	BR-864.636.980	BUISVERBINDER MET METALEN KERN DIA.25	
4	1	MPA-01.121.265	DUWBEUGEL BOVEN	S235J2G3
5	1	BN-231.002.077	SOFT GRIP-SCHLAUG TP/K 24.5X3X775MM-BLACK	
6	1	BN-332.500.220	HANDEL SACCON-LABS7B03 STROKE 17.5 KLEM 25 MM	
7	1	BK-151.181.370	KABEL GRENDELBDIENING	
8	1	BK-212.061.250	GAINÉ GRENDEL-PRO/STD	
9	1	BQ-501.120.080	KLEVER EDGESTYLER 6X21	
10	1	MPA-01.121.260	DUWBEUGEL ONDER	S235J2G3
11	4	BS-511.000.840	DIN 931 VIS M8X40	
12	4	BS-531.000.800	DIN 125 RONDELLE M8	
13	2	BR-020.501.250	BOUCHON POUR TUBE D:25 MM	
14	1	BK-170.208.000	SERT CABLE 8X15MM	

ELIET EDGE STYLER STD -- STEER

NO	MMA-01.121.220	REV	1	DATE	2009/03/11
----	-----------------------	-----	---	------	------------



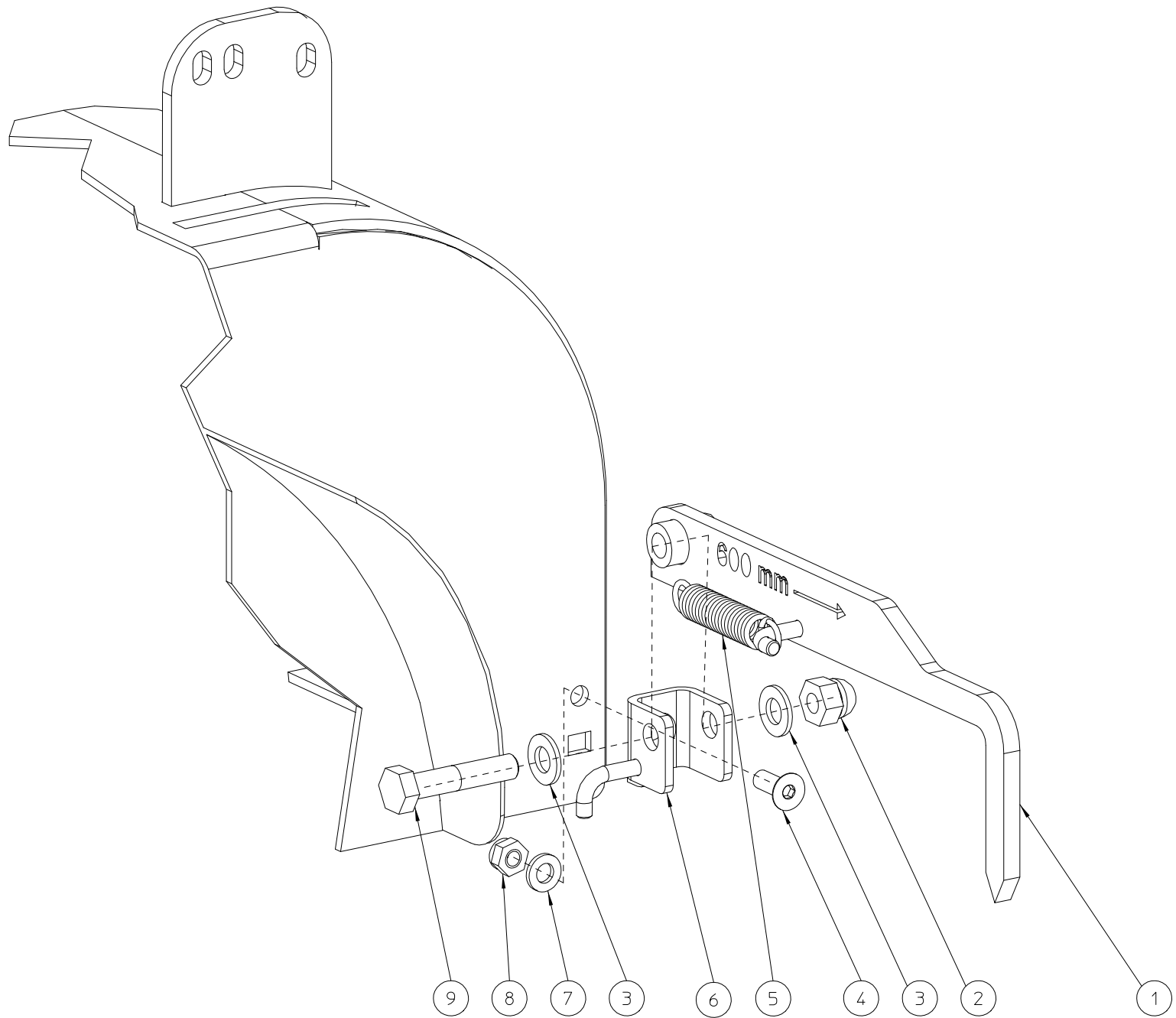
ELIET EDGE STYLER STD -- TRANSMISSION

NO	MMA-01.121.230	REV	1	DATE	2009/03/11
----	----------------	-----	---	------	------------

NOMENC: MMA-01.121.230				
Pos	Qté	Nom	Description	Matériau
1	2	BL-801.101.200	PALIER COMPLET ASPFL 201	
2	4	BS-554.100.616	DIN 603 VIS A BOIS M6X16	
3	2	BS-532.506.276	SLUITRING VOOR SCHR.MET VERZONKEN KOP 6,5X27X3	
4	2	BS-522.100.616	DIN 7991 VIS A TETE FRAISEE M6X16	
5	1	MPA-01.121.280	STEUN REDUKTIEKAST	
6	4	BS-554.100.620	DIN 603 VIS A BOIS M6X20	
7	9	BS-502.000.600	DIN 985 ECROU NYLON M6	
8	10	BS-531.000.600	DIN 125 RONDELLE M6	
9	1	BS-501.000.600	DIN 934 ECROU M6	
10	1	BS-512.000.643	DIN 933 VIS M6X55	
11	1	BW-526.028.502	AANDRIJFWIEL-R-COMPLEET-260X100-140CHN	
12	1	BR-112.122.100	GLIJLAGER 12X16X19/2	
13	1	MPA-01.121.130	STEUN 2 REDUKTIEKAST	S235J2G3
14	1	BA-670.405.401	REDUKTIEKAST ELIET-EDGE_STYLER	
15	1	BB-351.040.440	SPIE 4X4X40	
16	1	BR-112.121.200	GLIJLAGER 12X16X10/2	
17	4	BS-023.000.612	DIN 916 VIS DE PRESSION M6X12	
18	1	BA-564.712.501	V-RIEMSCHIJF SPZ DW-125	
19	1	BA-521.108.000	V-RIEM XPZ 800 QUAD-POWER	
20	1	MPA-01.121.205	KLEMRING WIEL LINKS	S235J2G3
21	1	BW-526.028.501	AANDRIJFWIEL-L-COMPLEET 260X100-140CHN	

ELIET EDGE STYLER STD -- TRANSMISSION

NO	MMA-01.121.230	REV	1	DATE	2009/03/11
----	----------------	-----	---	------	------------



ELIET EDGE STYLER STD --- GUIDE

NO	MMA-01.121.240	REV	1	DATE	2009/03/17
----	----------------	-----	---	------	------------

NOMENC: MMA-01.121.240

Pos	Qté	Nom	Description	Matériau
1	1	MPA-01.121.215	UITLIJNPIJL	
2	1	BS-505.800.800	D MOER ZELFBORGEND DIN_986 M8	
3	2	BS-531.000.800	DIN 125 RONDELLE M8	
4	1	BS-522.100.616	DIN 7991 VIS A TETE FRAISEE M6X16	
5	1	BV-912.000.010	RESSORT DE GUIDE	
6	1	MPA-01.121.285	PIJLSTEUN	
7	1	BS-531.000.600	DIN 125 RONDELLE M6	
8	1	BS-502.000.600	DIN 985 ECROU NYLON M6	
9	1	BS-511.000.840	DIN 931 VIS M8X40	

ELIET EDGE STYLER STD --- GUIDE

NO	MMA-01.121.240	REV	1	DATE	2009/03/17
----	----------------	-----	---	------	------------