



NATIONAL GUARD  
PRODUCTS


# ADA Compliant Interlocking Ramp R125

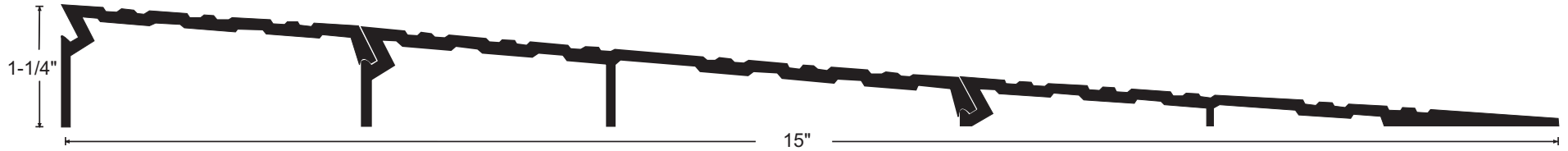
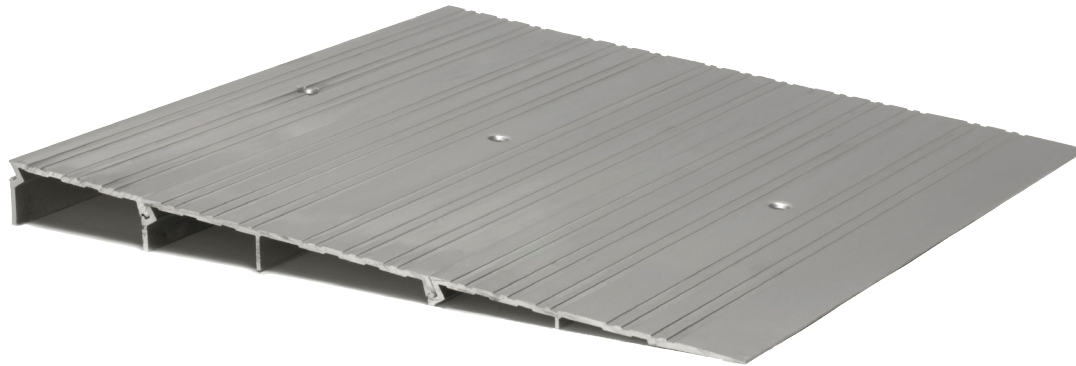


### Materials & Finishes

Aluminum alloy 6063, T5 temper  
Mill finish  
DKB - dark bronze finish

- 15" wide x 1-1/4" tall
- BHMA certified to ANSI/BHMA A156.21 1,000 lb. load test
- Typical wall thickness: .110"
- Weight: 2.77 lbs./ft.
- #10 FH zinc plated wood screws included

 Optional Slip Resistant SIA Finish



Project:
Submitted by:
Date:
Notes:



All products pages T24 and T25

Illustrations shown at 50%

## ADA Compliant Interlocking Ramps

### Return Closed Ends for Ramps

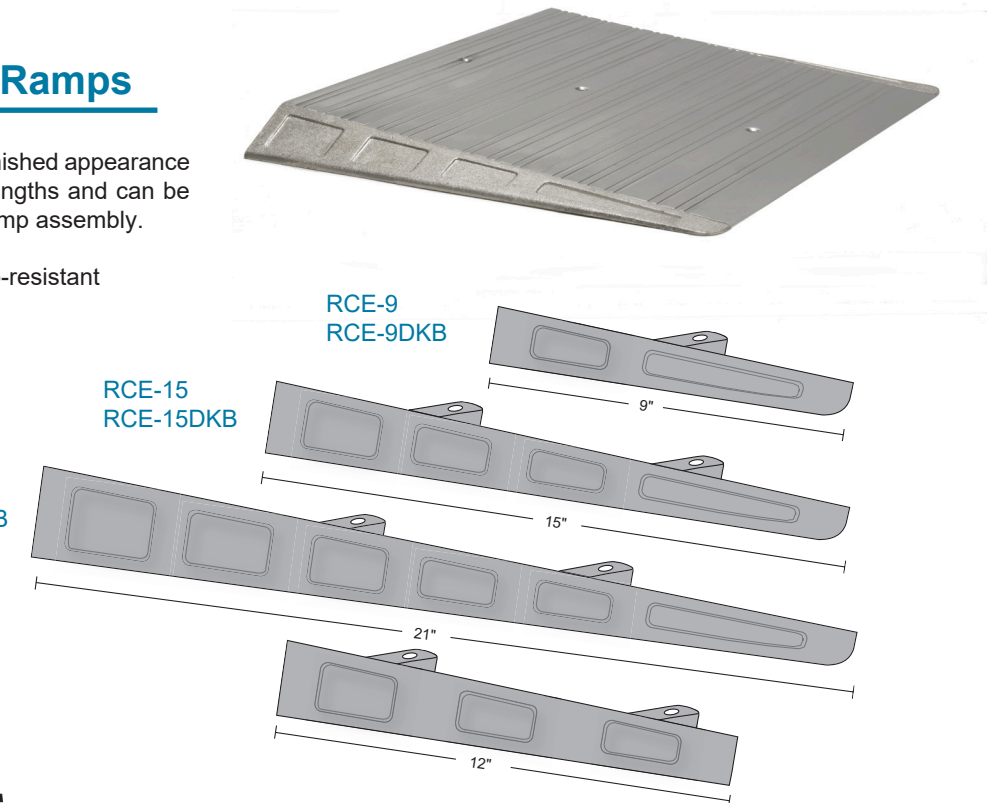
Return closed ends provide an attractive finished appearance to ramps. They are available in several lengths and can be field trimmed to accommodate any size ramp assembly.

RCE's are also available with slip-resistant "SIA" finish (suffix "SIA").

RCE-21  
RCE-21DKB

RCE-15  
RCE-15DKB

RCE-9  
RCE-9DKB



RCE-30 (includes RCE-21 + 12" extension)  
RCE-30DKB (includes RCE-21 + 12" extension)

#### MATERIALS & FINISHES

- Aluminum mill finish
- DKB - Aluminum dark bronze finish

• Optional: Slip Resistant SIA Finish