



NATIONAL GUARD
PRODUCTS

Aluminum Ramp 654

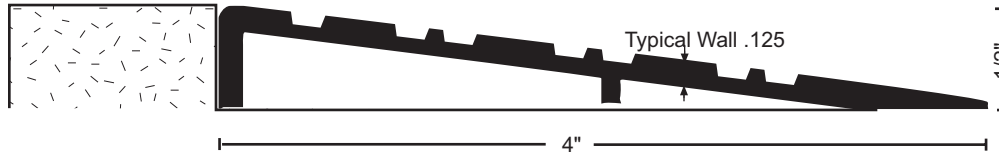
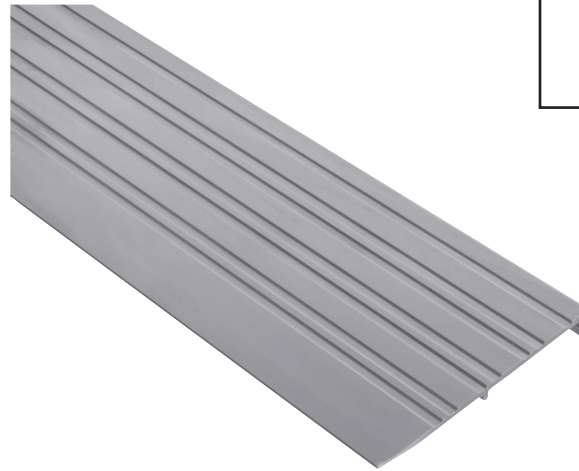


Materials & Finishes

Aluminum alloy 6063, T5 temper
Mill finish
DKB - dark bronze finish

- 4" wide x 1/2" tall
- Fluted top
- BHMA certified to ANSI/BHMA A156.21 1,000 lb. load test
- Typical wall thickness .125"
- Weight: .53 lbs./ft.
- #10 FH zinc plated wood screws included

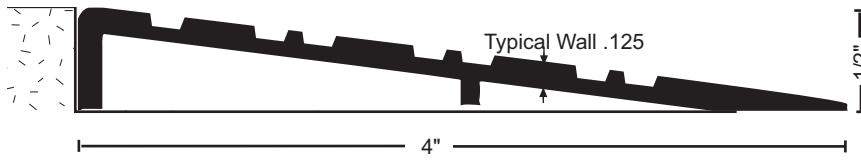
Optional Slip Resistant SIA Finish



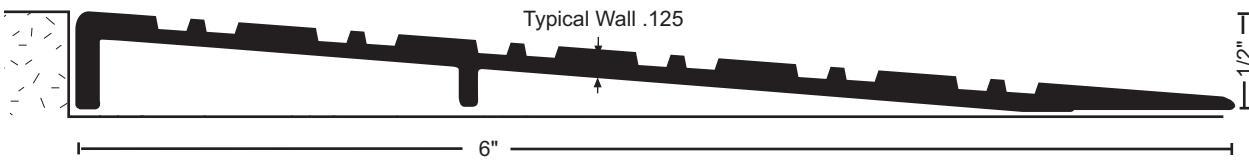
Project:
Submitted by:
Date:
Notes:

Aluminum Ramps

All aluminum ramps this section



654 .53 lbs./ft.
654DKB .53 lbs./ft.



657 .86 lbs./ft.
657DKB .86 lbs./ft.



MATERIALS & FINISHES

- Aluminum mill finish
- DKB - Aluminum dark bronze finish



• Optional: Slip Resistant SIA Finish

Interlocking Rubber Ramps

- Supplied with beveled ends - (end slope = 1:2). Specify if straight cut is required.
- Rubber ramp sections may be combined with aluminum ramp components for higher rises, or with 6" flat aluminum interlocking threshold #957 for offset conditions.
- Black silicone adhesive available to secure ramps without fasteners. Specify RR5007BL, each tube will secure 2 ramps 12" wide x 36" long (6 square feet.)



RR42 3.4 lbs./ft.
maximum length = 118"



RR952 1.0 lbs./ft.
maximum length = 120"



Slope = 1:12
Illustrations shown at 50%