

The 5200 Series is also available in a **Complete One Box Solution**

HES® 5200 Electric Strike

Works with cylindrical locksets up to a 3/4" throw latchbolt



The Grade 1 solution with horizontal adjustability.

The 5200 series electric strikes feature an in-frame horizontal adjustable design to simplify the installation process. This feature allows the installer to easily adjust the electric strike opening to accommodate the horizontal position of the latchbolt after the strike has been installed. This field selectable fail secure/fail safe unit is easy to install and accommodates latchbolts up to 3/4" throw.

Features

Standard Features

- Tamper-resistant
- Static strength 1,500 lbs
- Dynamic strength 70 ft-lbs
- Endurance 1 million cycles
- Field selectable fail secure/fail safe
- In-frame horizontal adjustment
- Non-handed
- Internally mounted solenoid
- Accommodates 5/8" - 3/4" latchbolt (3/4" with 1/8" door gap)
- Strike body depth 1-3/16"
- Plug-in connector
- Trim enhancer included
- SecuriCare five-year, no fault, no questions asked warranty

Optional Features

- **LBM** Latchbolt monitor
- **LBSM** Latchbolt strike monitor

Accessories

- **5200-500** Filler block for retro-fit applications
- **150** Strike latch guard
- **HES-CUT-MTK** Metal template kit
- **2001M** Plug-in bridge rectifier
- **2004M** Electrolynx® adapter
- **2005M3** SMART Pac® III
- **2006M** Plug-in buzzer
- **5204-1/2** 1/2" stackable lip extension
- **5204-1** 1" stackable lip extension
- **5204-1-1/4** 1-1/4" stackable lip extension



Grade 1



SecuriCare
Warranty



Cylindrical
Locksets



Specialty
Locksets



Field Selectable
(Fail secure
/Fail safe)



Dual Voltage
12/24



PoE
Friendly



Burglary
Rated

Dimensions

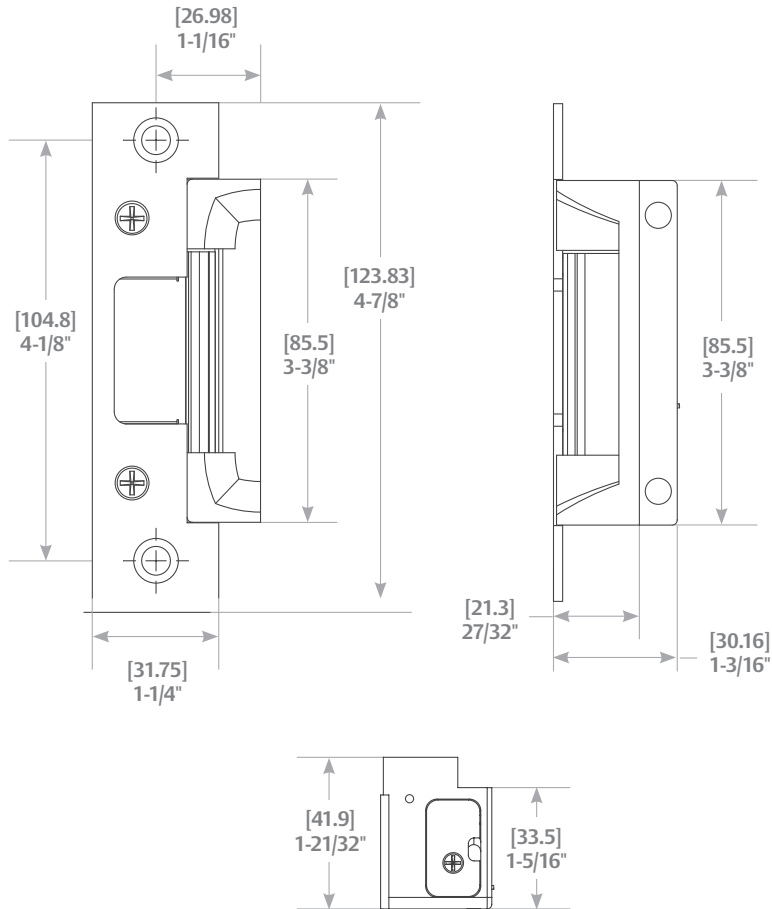


Diagram shown with 501 Option

Specifications

Certifications

- ANSI/BHMA A156.31, Grade 1
- UL 1034 burglary-resistant listed
- UL 294 (6th Edition) listed
- RoHS compliant

Frame Application

- Metal
- Wood

Electrical (DC Continuous Duty)

- Dual voltage 12/24 VDC/VAC
- 240 mA at 12 VDC/120 mA at 24 VDC
- PoE friendly

How to Order

Series	Model	Finish*	Option (s)
5200	—	— 630	— LBM
5200 Universal Electric Strike; Faceplates ordered separately	C* Complete Electric Strike; Includes the 501 and 501A faceplates	605 Bright Brass	LBM Latchbolt Monitor
		606 Satin Brass	LBSM Latchbolt Strike Monitor
		612 Satin Bronze	
		613 Bronze Toned	
		629 Bright Stainless Steel	
		630 Satin Stainless Steel	
		BLK Black	

*Complete Pacs are only available in the 630 finish

HES 5000/5200 Series Faceplate Options



Operation: After releasing the latchbolt, the keeper returns to the locked position



4-7/8" × 1-1/4"
Square corners and
flat faceplate

501 Option

For use with: Cylindrical locksets in ANSI metal jambs

» ANSI/BHMA Numbers: E09321, E09322, E09323



4-7/8" × 1-1/4"
Radius corners and
flat faceplate

501A Option

For use with: Cylindrical locksets or spring latches in aluminum frames. Includes universal mounting tabs.

» ANSI/BHMA Numbers: E09321, E09322, E09323



7-15/16" × 1-7/16"
Radius corners and
flat faceplate

502 Option

For use with: Cylindrical locksets or spring latches in aluminum frames. Includes universal mounting tabs.

» ANSI/BHMA Numbers: E09321, E09322, E09323



6-7/8" × 1-1/4"
Radius corners and
flat faceplate

503 Option

For use with: Cylindrical locksets or spring latches in aluminum frames. Includes universal mounting tabs.

» ANSI/BHMA Numbers: E09321, E09322, E09323



10" × 1-3/8"
Radius corners and
flat faceplate

504 Option

For use with: Cylindrical locksets. Four-point mounting for wood installations

» ANSI/BHMA Numbers: E09321, E09322, E09323



"For use with" information is offered as a recommendation only. Reference should be made to the lockset manufacturer for proper installation instructions necessary to meet compatibility requirements.