

7226 3/4" Offset pivot, 600lb with top header mount and bottom base mount
7226F 3/4" Offset pivot, 600lb with top header mount and bottom base mount, fire rated

- Maximum door load 600 pounds
- Recommended for use with 1-3/4" minimum door thickness, with 1/8" bevel in 2"
- Vertical adjustment range 3/16", with positive locking
- Handed LH or RH
- 7226 Set (7226 Top and 7226 Btm)
- 7226 Top (7212-7215-7222-7226-7227 Top), header mount
- 7226 Btm (7226 Btm), base plate mount
- 7226F Set (7226F Top and 7226F Btm)
- 7226F Top (7215F-7226F-7227F Top), header mount
- 7226F Btm (7226F Btm), base plate mount

Certifications

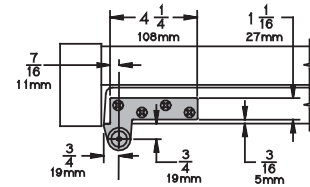
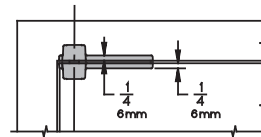
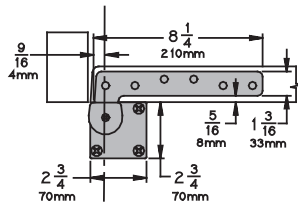
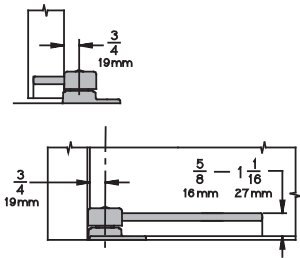
- Meets ANSI/BHMA A156.4 C07162
- 7226 - UL Listed, 20 minute fire doors
- 7226F - UL Listed, 3 hour fire doors

Material substrate

- 7226 - Made from cast brass
- 7226F - Made from 304 series stainless steel

Available accessory items

- Use 7226 INT (7215-7226-7227) Intermediate Pivot (handed) as needed. See General Information for specifics on how many intermediate pivots are recommended.
- Use 7226F INT (7215F-7226F-7227F) Intermediate Pivot (handed) as needed. See General Information for specifics on how many intermediate pivots are recommended.
- For electrical applications, use 7226PT INT (7215-7226-7227 PT INT) Power Transfer Intermediate pivot. For additional electrical wiring applications, consult product support.



7226 Finishes

BHMA	Description	Substrate	Finish
605	Bright brass	Brass	US3
606	Satin brass	Brass	US4
610	Satin bronze	Brass	US10
613	Oil rubbed bronze	Brass	US10B
619	Satin nickel	Brass	US15
622	Matte black	Brass	BLK
625	Bright chrome	Brass	625
626	Satin chrome	Brass	626
---	Aged bronze	Brass	643e/716
689	Aluminum painted	Brass	SP28
691	Bronze painted	Brass	SP10
695	Dark bronze painted	Brass	SP313
706	Brass painted	Brass	SP4

7226F Finishes

BHMA	Description	Substrate	Finish
629	Bright stainless	Stainless steel	US32
630	Satin stainless	Stainless steel	US32D
631	Matte black	Stainless steel	BLK
632	Bright brass	Stainless steel	US3
639	Satin bronze	Stainless steel	US10
---	Aged bronze	Stainless steel	643e/716
689	Aluminum painted	Stainless steel	SP28
691	Bronze painted	Stainless steel	SP10
695	Dark bronze painted	Stainless steel	SP313
706	Brass painted	Stainless steel	SP4

For other colors, consult factory.