

7255 Center hung pivot, 500lb with bottom base mount

- Maximum door load 500 pounds
- Recommended for use with 1-3/4" minimum door thickness
- Not recommended for doors larger than 4'0" X 8'0"
- Easy installation, tilt on bearing and bearing pin
- Adjustable floor to door clearance 3/16" to 3/4", consult product support if greater than 3/4"
- Vertical adjustment range 3/16", with positive locking
- Non-handed
- 7255 Set (7255 Top and 7255 Btm)
- 7255 Top (7253-7255-7255J-7256 Top), header mount
- 7255 Btm (7255 Btm), base plate mount

Certifications

- Meets ANSI/BHMA A156.4 C07032
- UL Listed, 20 minute fire doors

Material substrate

- Made from cast brass

Dimensions

- Radius Stop (A) to clear heel of door edge.
- Pivot distance (B) 1-3/4" (44mm) minimum from jamb to centerline of pivot pin. Radius heel edge of door, 1-5/8" (41mm) minimum recommended.
- Clearance from bottom edge of door to floor mounting surface is adjustable from 3/16" (5mm) to 3/4" (19mm) by varying the depth of the mortise (C) in the bottom of the door, refer to Chart D. Consult product support when clearance is over 3/4" (19mm).

Table D

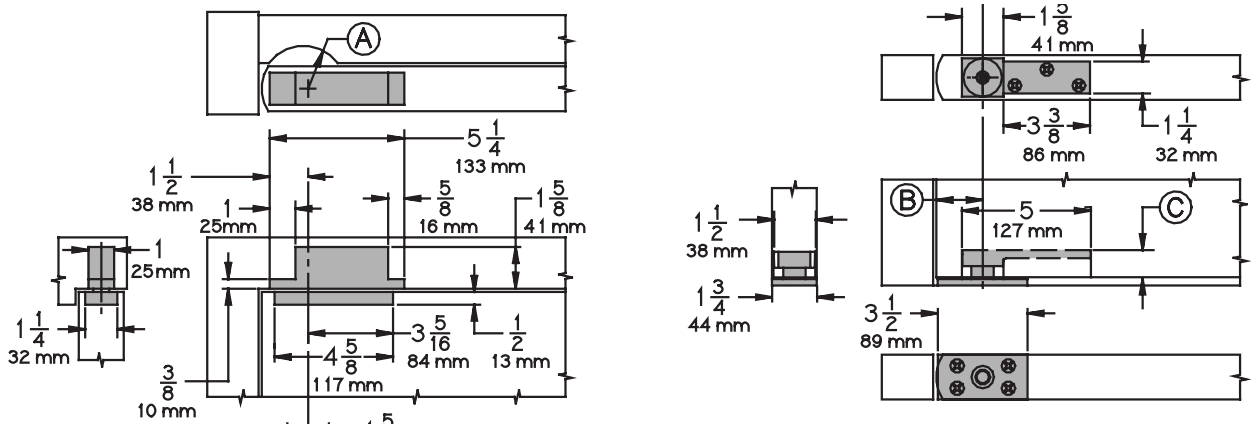
Clearance Depth of Mortise

3/16" (5mm)	1-3/16" (30mm)
3/8" (10mm)	1" (25mm)
1/2" (13mm)	7/8" (22mm)
5/8" (16mm)	3/4" (19mm)
3/4" (19mm)	5/8" (16mm)

7255 Finishes

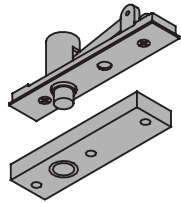
BHMA	Description	Substrate	Finish
605	Bright brass	Brass	US3
606	Satin brass	Brass	US4
610	Satin bronze	Brass	US10
613	Oil rubbed bronze	Brass	US10B
619	Satin nickel	Brass	US15
622	Matte black	Brass	BLK
625	Bright chrome	Brass	625
626	Satin chrome	Brass	626
---	Aged bronze	Brass	643e/716
689	Aluminum painted	Brass	SP28
691	Bronze painted	Brass	SP10
695	Dark bronze painted	Brass	SP313
706	Brass painted	Brass	SP4

For other colors, consult factory.

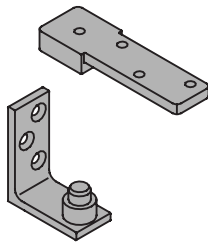


7255J Center hung pivot, 500lb with bottom jamb mount

- Maximum door load 500 pounds
- Recommended for use with 1-3/4" minimum door thickness
- Not recommended for doors larger than 4'0" X 8'0"
- Easy installation, tilt on bearing and bearing pin
- Adjustable floor to door clearance 3/16" to 3/4", consult product support if greater than 3/4"
- Vertical adjustment range 3/16", with positive locking
- Non-handed
- 7255J Set (7255J Top and 7255J Btm)
- 7255J Top (7253-7255-7255J-7256 Top), header mount
- 7255J Btm (7255J Btm), jamb mount



Top



Btm

Certifications

- Meets ANSI/BHMA A156.4 C07042
- UL Listed, 20 minute fire doors

Material substrate

- Made from cast brass

Dimensions

- Radius Stop (A) to clear heel of door edge.
- Pivot distance (B) 1-3/4" (44mm) minimum from jamb to centerline of pivot pin. Radius heel edge of door, 1-5/8" (41mm) minimum recommended.
- Clearance from bottom edge of door to floor mounting surface is adjustable from 3/16" (5mm) to 3/4" (19mm) by varying the depth of the mortise (C) in the bottom of the door, refer to Chart D. Consult product support when clearance is over 3/4" (19mm).

7255 Finishes

BHMA	Description	Substrate	Finish
605	Bright brass	Brass	US3
606	Satin brass	Brass	US4
610	Satin bronze	Brass	US10
613	Oil rubbed bronze	Brass	US10B
619	Satin nickel	Brass	US15
622	Matte black	Brass	BLK
625	Bright chrome	Brass	625
626	Satin chrome	Brass	626
---	Aged bronze	Brass	643e/716
689	Aluminum painted	Brass	SP28
691	Bronze painted	Brass	SP10
695	Dark bronze painted	Brass	SP313
706	Brass painted	Brass	SP4

For other colors, consult factory.

Table D

Clearance Depth of Mortise

3/16" (5mm)	1-3/16" (30mm)
3/8" (10mm)	1" (25mm)
1/2" (13mm)	7/8" (22mm)
5/8" (16mm)	3/4" (19mm)
3/4" (19mm)	5/8" (16mm)

