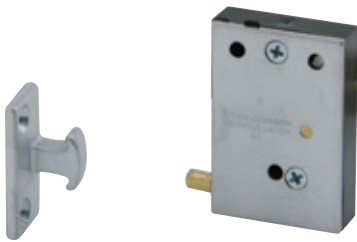


A	Hinges & pivots
B	Pulls & plates
C	Flush bolts & coordinators
D12	Latches, catches & bolts
E	Stops
F	Exterior hardware
G	Miscellaneous hardware



CL11 Invisible latch

- Invisible latch is ideal for installations where no visible latch or strike is desired
- Unit can be installed at the top, bottom or side of the door
- Can be mortised into the stop or surface mounted to the stop
- Recommended for use on small panels, cabinet doors or light weight closet doors
- Operation is simple, latching is accomplished by a slight push
- To unlatch the door, a harder push releases the door and pushes the door out
- Brass and plastic construction
- Applies 13 pounds to open the door
- Units packed with wood screws

Certifications

- Meets ANSI/BHMA A156.9, B03272

Material substrate

- Made from brass and plastic

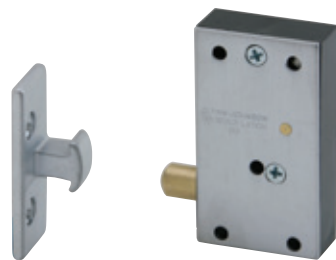
See finishes below

Available accessory items

- Security pin screws

Dimensions

- Body: 1-1/4" wide x 1-7/8" high x 7/16" thick
- Strike: 9/16" wide x 1-5/16" high x 9/16" high



CL12 Invisible latch

- Invisible latch is ideal for installations where no visible latch is desired
- Unit can be installed at the top, bottom or side of the door
- Can be mortised into the stop or surface mounted to the stop
- Recommended for use on larger panels or regular size doors
- Operation is simple, latching is accomplished by a slight push
- To unlatch the door, a harder push releases the door and pushes the door out
- Brass and plastic construction
- Applies 27 pounds to open the door
- Units packed with wood screws

Certifications

- Meets ANSI/BHMA A156.9, B03272

Material substrate

- Made from brass and plastic

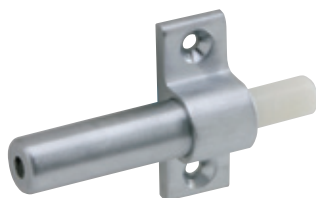
See finishes below

Available accessory items

- Security pin screws

Dimensions

- Body: 1-1/4" wide x 2-1/4" high x 9/16" thick
- Strike: 5/8" wide x 1-13/16" high x 9/16" projection



CL14 Invisible latch, auxiliary pusher

- Aid in the operation of the CL11 and CL12 where hinges or surrounding conditions prevent smooth operation of doors
- Provides 1-1/16" throw
- Nylon pusher
- Applies 10 pounds to open the door
- Units packed with wood screws

Certifications

- Meets ANSI/BHMA A156.9, B13282

Material substrate

- Made from brass

See finishes below

Available accessory items

- Security pin screws

Dimensions

- Body: 2-15/16" long x 1-11/16" wide x 5/8" deep

CL11, CL12 and CL14 Finishes

BHMA	Description	Substrate	Finish
605	Bright brass	Brass	US3
606	Satin brass	Brass	US4
612	Satin bronze	Brass	US10
626	Satin chrome	Brass	US26D

For other colors, consult factory.