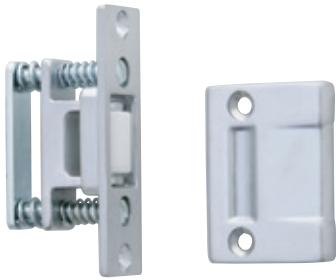


<b>A</b>	Hinges & pivots
<b>B</b>	Pulls & plates
<b>C</b>	Flush bolts & coordinators
<b>D8</b>	Latches, catches & bolts
<b>E</b>	Stops
<b>F</b>	Exterior hardware
<b>G</b>	Miscellaneous hardware



## RL30 Roller latch RL30A Roller latch

- Recommended for higher traffic applications
- Actuation is simple, closing of the door causes the roller to fall in the depression of the strike, thereby holding the door closed
- The projection of the roller is easily adjusted using adjusting screws on the face of the unit
- Maximum projection of the roller is 3/8" allowing for variance in the door clearance
- Nylon roller standard
- Units packed with wood and machine screws to meet most field conditions
- RL30A model packed with ASA strike

### Certifications

- Meets ANSI/BHMA A156.16, E19091

### Available accessory items

- Strike - ASA
- Security mounting screws
- Brass roller
- Silencers

### Dimensions

- Body: 1-1/8" wide x 2-1/4" high x 2-1/4" deep
- Strike: 1-1/8" wide x 2-3/4" high x 3/32" thick, lip to center- 1-1/4"
- Optional ASA strike: 1-1/4" wide x 4-7/8" high x 3/32" thick, lip to center- 1-1/4"

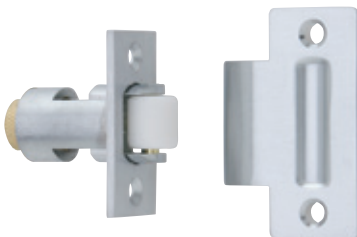
### Material substrate

- Made from forged brass

### Finishes

BHMA	Description	Substrate	Finish
605	Bright brass	Brass	US3
606	Satin brass	Brass	US4
612	Satin bronze	Brass	US10
613	Oil rubbed bronze	Brass	US10B
619	Satin nickel	Brass	US15
625	Bright chrome	Brass	US26
626	Satin chrome	Brass	US26D
643e/716	Aged bronze	Brass	643e/716
622	Matte black	Brass	BLK

For other colors, consult factory.



## RL32 Roller latch RL32A Roller latch

- Recommended light duty cabinet and closet applications
- Actuation is simple, closing of the door causes the roller to fall in the depression of the strike, thereby holding the door closed
- The projection of the roller is easily adjusted by turning knurled knob on back of latch.
- Maximum projection of the roller is 1/2" allowing for variance in the door clearance
- Fits heavy-duty cylindrical lock cutout
- Nylon roller standard
- Non-handed
- Units packed with wood screws
- RL32A model packed with ASA strike

### Certifications

- Meets ANSI/BHMA A156.16, E19091

### Available accessory items

- Strike—A—ASA

### Material substrate

- Made from brass

### Dimensions

- Body: 1-1/8" wide x 2-1/4" high x 2-1/4" deep
- Strike: 1-1/8" wide x 2-3/4" high x 3/32" thick, lip to center - 1-1/4"
- Optional ASA strike: 1-1/4" wide x 4-7/8" high x 3/32" thick, lip to center- 1-1/4"

### Finishes

BHMA	Description	Substrate	Finish
605	Bright brass	Brass	US3
606	Satin brass	Brass	US4
612	Satin bronze	Brass	US10
613	Oil rubbed bronze	Brass	US10B
619	Satin nickel	Brass	US15
625	Bright chrome	Brass	US26
626	Satin chrome	Brass	US26D
643e/716	Aged bronze	Brass	643e/716
622	Matte black	Brass	BLK

For other colors, consult factory.