



**RL36 Roller latch**  
**RL36A Roller latch**

- Recommended light duty cabinet and closet applications
- Actuation is simple, closing of the door causes the roller to fall in the depression of the strike, thereby holding the door closed
- The projection of the roller is easily adjusted by turning slotted screw on back of latch
- Maximum projection of the roller is 5/16" allowing for variance in the door clearance
- Fits cylindrical lock cutout
- Nylon roller
- Non-handed
- Units packed with wood screws
- RL36A model packed with ASA strike

**Certifications**

- Meets ANSI/BHMA A156.16, L57082

**Material substrate**

- Made from stainless steel

**Available accessory items**

- Strike—A—ASA

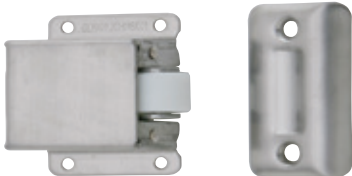
**Finishes**

BHMA	Description	Substrate	Finish
630	Satin stainless	Stainless steel	US32D

*For other colors, consult factory.*

**Dimensions**

- Body: 1" wide x 2-1/4" high x 2" deep
- Strike: 1-1/8" wide x 2-3/4" high x 3/32" thick, lip to center- 1-1/4"
- Optional ASA strike: 1-1/4" wide x 4-7/8" high x 3/32" thick, lip to center- 1-1/4"



**RL38 Roller latch**

- Rim style roller latch
- Actuation is simple, closing of the door causes the roller to fall in the depression of the strike, thereby holding the door closed
- The projection of the roller is easily adjusted by turning slotted screw
- Maximum projection of the roller is 3/8" allowing for variance in the door clearance
- Nylon roller
- Non-handed
- Units packed with wood screws

**Certifications**

- Meets ANSI/BHMA A156.16, L27092

**Material substrate**

- Made from stainless steel

**Finishes**

BHMA	Description	Substrate	Finish
630	satin stainless	Stainless steel	US32D

*For other colors, consult factory.*

**Dimensions**

- Body: 1-3/8" wide x 2" high x 7/8" deep
- Strike: 1" wide x 2-1/8" high x 3/8" deep

**A** Hinges & pivots  
**B** Pulls & plates  
**C** Flush bolts & coordinators  
**D9** Latches, catches & bolts  
**E** Stops  
**F** Exterior hardware  
**G** Miscellaneous hardware