

A
Hinges & pivots

B
Pulls & plates

C
Flush bolts & coordinators

D
Latches, catches & bolts

E14
Stops

F
Exterior hardware

G
Miscellaneous hardware



WS40 Automatic wall holder

- Holder is mounted on wall and strike is mounted on door
- Roller on holder rides up seats itself on strike, with a heavy duty bumper pad deadening the sound and shock
- Packed with fasteners for light duty masonry and drywall/wood applications

Certifications

- Meets ANSI/BHMA 156.16, L11291 for brass, and L31291 for aluminum

Material substrate

- Made from cast brass or aluminum

Available accessory items

- Security pin screw
- Hook package

Dimensions

- Base height: 2"
- Base width: 2-1/2"
- Base projection: 2-1/4"
- Engaged projection: 3-1/2"
- Strike height: 2-1/16"
- Strike width: 3/4"
- Strike projection: 2"

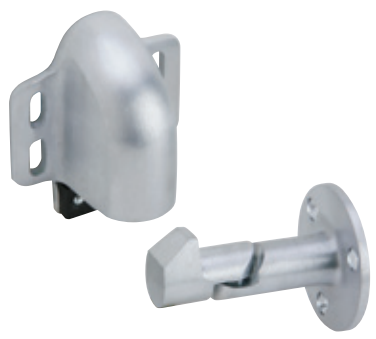
Finishes - Brass

BHMA	Description	Substrate	Finish
605	Bright brass	Brass	US3
606	Satin brass	Brass	US4
612	Satin bronze	Brass	US10
613	Oil rubbed bronze	Brass	US10B
625	Bright chrome	Brass	US26
626	Satin chrome	Brass	US26D

Finishes - Aluminum

BHMA	Description	Substrate	Finish
628	Satin aluminum	Aluminum	US28

For other colors, consult factory.



WS45

WS45 Automatic wall holder - drywall/wood

WS45X Automatic wall holder - masonry

- Spring loaded roller rides up the face of the strike, seating itself on the strike, holding the door firmly in the open position
- A heavy rubber pad cushions the shock and absorbs the sound
- With unit mounted on door and the strike on wall, vertical adjustment is available on body
- The strike is adjustable 45 degrees left or right, both adjustments easily accomplished at time of installation or at a later date.
- WS45 is packed with fasteners for drywall/wood applications.
- WS45X is packed with fasteners for heavy duty masonry applications

Certifications

- WS45 Meets ANSI/BHMA 156.16, L11291 for brass and L31291 for aluminum
- WS45X Meets ANSI/BHMA 156.16, L11291 for brass and L31291 for aluminum

Material substrate

- Made from cast brass or aluminum

Available accessory items

- Security pin screw
- Hook package

Dimensions

- Base height: 3-11/16"
- Base width: 3"
- Base projection: 2"
- Engaged projection: 3-7/16"
- Strike diameter: 2-3/8"
- Strike projection: 3"

Finishes - Brass

BHMA	Description	Substrate	Finish
605	Bright brass	Brass	US3
606	Satin brass	Brass	US4
612	Satin bronze	Brass	US10
613	Oil rubbed bronze	Brass	US10B
619	Satin nickel	Brass	US15
622	Matte black	Brass	BLK
625	Bright chrome	Brass	US26
626	Satin chrome	Brass	US26D
---	Aged bronze	Brass	643e/716

Finishes - Aluminum

BHMA	Description	Substrate	Finish
628	Satin aluminum	Aluminum	US28

For other colors, consult factory.