

# Trilogy: PDL3000



## Trilogy prox locks with audit trail capabilities

Prox reader capabilities with Trilogy durability for indoor and outdoor applications

- **Rugged clutch mechanism and Grade 1 durability** ensure long life
- **500 scheduled events**, including 4 quick schedules for programming the 4 most common time schedules in one step
- **2000 user codes** including: Master, manager, supervisor and basic user. Users are individually programmed to use a card only, code only, or for the highest security, both card and code. (3-6 digits) and/or accepts HID prox cards and keyfobs.
- **Weatherproof performance**, operational temperature range of -31°F to +151°F (-35°C to +66°C)
- **Entry allowance** from 3-15 seconds
- **Greater security with temporary keypad lockout after 6 unsuccessful code-entry attempts**
- **Up to 40,000 event audit trail with time/date stamp** for a printable record of door access activity by user
- **Real time clock** allows logging of events to within 1 second of accuracy
- **Programmable relays** energize when one or more selected events occur
- **Easy to install in about an hour** retrofits most cylindrical locksets and digital locks
- **Battery operated**; uses 5 AA batteries; 60,000 cycles, typical.
- **Available in standard key override and interchangeable core models** accepting 6 or 7 pin cores from Arrow, Best, Falcon or KSP. Other IC core preps available.
- **Available in standard Trilogy leverset (straight) or with regal (curved) lever**
- **Available in six finishes**; polished brass (US3), satin brass (US4), antique brass (US5), polished chrome (US26), satin chrome (US26D), duronodic (US 10B).
- **Tap & add batch ID**; card enrollment mode allows many cards to be quickly added without PC - also downloadable from PC or enroller tool

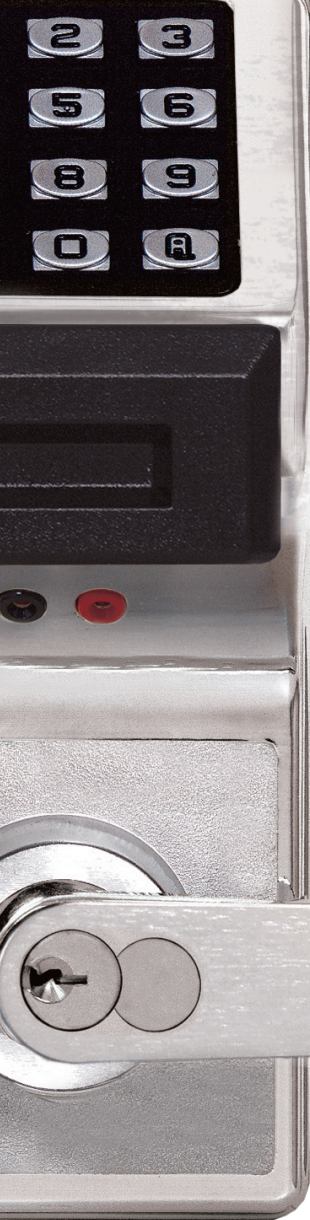
### New! PDL3000K

- **PDL3000K** model logs mechanical key override use and has an interchangeable core prep



**ALARM LOCK**





**KEYPAD:** Weatherproof, all metal, 12-button programmable for multi-level access functions. Proximity antenna housing molded of ultra high strength, impact resistant Lexan®.

**OPERATION:** Authorized digital code allows lever to retract latch.

**DOOR THICKNESS:** 1 5/8" to 1 7/8" standard. For 1 3/8" doors use HW567 & HW569 spacers. For other other thicknesses, please consult factory.

**BACKSET:** 2 3/4" Standard. 2 3/8" backset also available.

**AUDIT TRAIL:** Lock's activity log can be extracted by using the AL-DTMIII (data transfer module), the AL-PCI2 (PC interface) and/or can be on-site printed using the AL-IR1 (hand-held infrared printer)

**STRIKE:** 1 1/8" x 2 3/4" T strike standard. With screws for wood or metal jambs. 1 1/4" x 4 7/8". ASA strike also included.

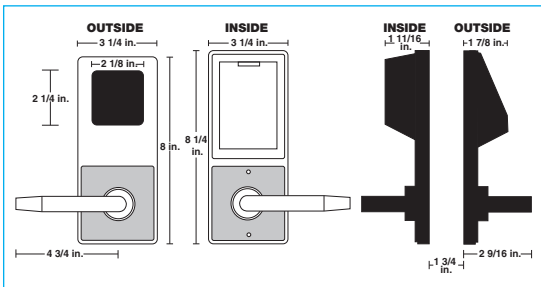
**FINISHES:** US3 polished brass, US4 satin brass, US26D satin chrome, US26 polished chrome, US5 antique brass, plus special order finishes (including Durondic US10B).

**DOOR PREP:** Standard ANSI A115 Series Prep, modified by adding additional through-bolt holes.

**COMPLIANCES:** Grade I, heavy duty cylindrical lockset, UL listed to the 10C Positive Pressure Specification. Latchbolt is UL listed and 3-hour fire rated, FCC certified. ADA compliant levers.

**STANDARD KEY OVERRIDE CYLINDER:** Solid brass 6 pin tumbler cylinder keyed 5, SCI keyway, furnished in all K.O. models. Tailpieces for Schlage (HW580) & Lori (HW620) cylinders (furnished).

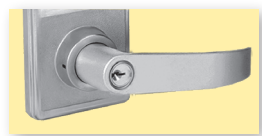
**INTERCHANGEABLE CODE MODELS:** Accepts 6 & 7 Pin Cylinders from: Best, Arrow, KSP, Falcon and Kaba Peaks. Also available IC Core models for Yale, Medeco, Corbin/Ruswin, Sargent and Schlage. Alarm Lock tailpieces is supplied; IC Core is not included.



**POWER:** 5AA alkaline batteries, supplied. Audible low battery alert, visual and audible entry indicators, 60,000 cycles typical.

**PROGRAMMING:** Locking modes, event schedules, group, individual, master, management, passage, emergency service codes. Lockout, remote override capability and allowable entry time (3, 10 or 15 seconds), are programmable through the keypad, AL-DTMIII or Alarm Lock's DL-Windows PC Software.

**PDL3000K:** Model logs mechanical key override use and has a standard interchangeable core prep.



Regal handle option



Lever sets feature clutch mechanism ensuring longer life and complies with ADA specs providing barrier-free access to the disabled.

## Trilogi audit trail lock accessories



**AL-DTMIII Data Transfer Module** used to transfer program data from the PC (running DL-WINDOWS software) to the lock and receives audit trail from the lock. Can store data for up to 96 locks at a time.

### AL-PCI2 Trilogi PC Software Kit

Windows-format software kit used to program Trilogi lock, codes, schedules, view audit trail reports. Kit includes DL-WINDOWS software and (required) computer interface cable for use on serial port. Note: Requires DL-WINDOWS Software version 3.02 or higher.



**AL-PCI2-U,** As above, but with interface cable for USB port.

**DL-WINDOWS** Upgrade for Trilogi software version (software only). (Contained in two items above.)



### AL-PRE: Prox Card Reader/Enroller

Enables instant, automatic enrollment of Prox cards, keyfobs, tags into DL-Windows (Simply present the prox Card/fob device to the unit's faceplate to enroll—no need to be in the presence of the lock while enrolling—eliminates the need for keyboarding each badge's number). Supports all Prox cards, keyfobs and tags. Simultaneous card enrollment, downloading or uploading – all on just one serial port. 9V Battery operation.



**AL-IR1 Infrared Printer** Prints the event log and user code with wireless hand-held convenience (battery operated).

**PDL 30 00 IC /26D -Y**

**Model & Series:**

PDL30 = Trilogi Prox Digital Lock  
PL3000 = As above, less keypad

**Trim:**

00 = Straight Lever  
75 = Regal Lever

**Cylinder:**

IC = Standard Interchangeable Core  
Prep for  
Best, Falcon, Arrow, KSP  
(Note: No "IC" indicates standard K.O. cylinder.)

**Finish:**

/26D = US26D Satin Chrome  
/3 = US3 Polished Brass  
/26 = US26 Polished Chrome  
/5 = US5 Antique Brass  
/10B = Durondic (Special Order)

**Special Order IC Prep:**

-Y = Yale  
-M = Medeco  
-R = Sargent  
-C = Corbin/Ruswin  
-S = Schlage



**ALARM LOCK**

345 Bayview Ave, Amityville, New York 11701  
1-800-ALA-LOCK • Fax 631-789-3383  
www.alarmlock.com

Trilogi is a trademark of Alarm Lock. © NAPCO 6/2005  
Patents and Patents Pending ALA167a