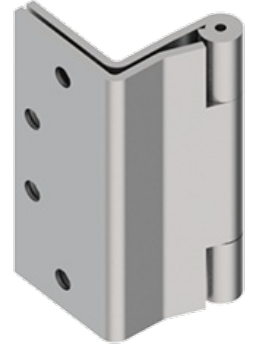


## AB7002

- Three Knuckle - Full Mortise
- Concealed Anti-Friction Bearing
- Standard Weight



**Note:**

- When opened 90°, door projects 3/32" (2 mm) past stop of jamb

### PRODUCT SPECIFICATIONS

**DESCRIPTION:**

- For beveled edge doors
- ANSI A8122
- Non-rising removable pin with flush pin and plug
- Reversible
- For use in hospitals or other institutional type buildings

**MATERIAL:**

- Steel with Steel pin

**FINISHES:**

- LS, USP, US3, US10, US10A, US10B, US26, US26D

### PRODUCT SIZE OPTIONS

HINGE SIZE (INCHES)	HINGE SIZE (MM)	GAUGE OF METAL	HOLE COUNT	SCREW SIZE (MACHINE)	SCREW SIZE (WOOD)
4 1/2	114	0.1395	8	1/2 x 12-24 FH	1 1/4 x 12 FH
5	127	0.1395	1/2 x 12-24 FH	1 1/4 x 12 FH	