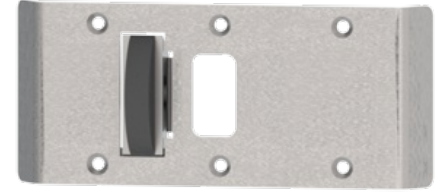


# 455

Combination Rescue Door Stop  
and Two Way Strike Plate -  
Center Hung Doors



**Material:**

- Brass

## PRODUCT SPECIFICATIONS

**DESCRIPTION:**

- For center hung doors
- ANSI A1882
- To be used with Hager 510, 511, and 512 pivots
- Handed (Specify when ordering)
- Door release allows doors to be opened in both directions without damage to frame
- Standard latchbolt cutout is 1-1/4" x 11/16" (32 mm x 17 mm)
- Standard strike plates are optimized for cylindrical locks/latches mounted on 1-

3/4" thick doors  
- Mortise lock applications require special latch cutout location (consult specific manufactures for variations of cutout dimensions)

## PRODUCT SIZE OPTIONS

| ITEM NO. | FACE PLATE (INCHES) | FACE PLATE (MM) | GAUGE OF METAL | HOLE COUNT | SCREW SIZE    |
|----------|---------------------|-----------------|----------------|------------|---------------|
| 456      | 6 3/4 x 2 3/4       | 171 x 70        | 0.093          | 6          | 1/2 x 8-32 FH |
| 457      | 5 3/4 x 2 3/4       | 146 x 70        | 0.093          | 6          | 1/2 x 8-32 FH |
| 458      | 6 3/4 x 2 3/4       | 171 x 70        | 0.093          | 6          | 1/2 x 8-32 FH |
| 455      | 5 3/4 x 2 3/4       | 146 x 70        | 0.093          | 6          | 1/2 x 8-32 FH |