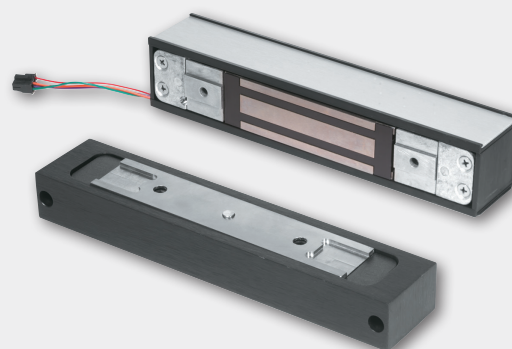




GF3000

Surface mounted
shear lock



Overview

GF3000 Series shear locks' patented design provides powerful holding force in low profile models for inswinging and outswinging doors. A microprocessor-based control module provides advanced electronic features. This circuitry automatically senses and adjusts input voltage, allowing for operation from 12 to 24 volt DC power sources.

The lightweight, black anodized housing can be quickly mounted without need of brackets and is finished off with a satin aluminum decorative plate for a clean look.

Features and benefits

- 3000 lb. hold force rating
- Automatic voltage selection (AVS) 12/24 VDC (filtered)
- Built-in automatic relock switch
- Adjustable time delay on relock, 2-30 seconds
- Low temperature operation
- Microprocessor controlled
- Optional Magnetic Bond Sensor (MBS) and Door Status Monitor (DSM) to monitor the secure/not secure condition of the lock and to sense the open/closed position of the door
- Housing is black anodized with BHMA 628 satin aluminum decorative plate
- ANSI/BHMA 156.23, UL 10C, cUL, and CSFM certifications
- Limited lifetime warranty on magnetic coil assembly

Specifications

	GF3000SM	GF3000TJ
Holding force (lbs.)	3000	3000
Door type	Outswinging	Inswinging
Current Draw	.90A @ 12VDC .45A @ 24VDC	.90A @ 12VDC .45A @ 24VDC
Lock housing (L x H x D)	9 ¹³ / ₁₆ " x 1 ¹ / ₄ " x 1 ¹ / ₂ "	9 ¹³ / ₁₆ " x 1 ¹ / ₄ " x 1 ¹ / ₂ "
Armature housing (L x H x D)	8 ³ / ₈ " x 1 ³ / ₈ " x 1 ¹ / ₂ "	8 ³ / ₈ " x 1 ³ / ₈ " x 1 ¹ / ₂ "
Weight	9 lbs.	9 lbs.
Certifications	UL10C, cUL, CSFM, ANSI/BHMA 156.23	UL10C, cUL, CSFM, ANSI/BHMA 156.23

Ordering information

- **GF3000SM (Surface Mounted):** Surface mounted shear lock intended for use on outswinging doors. Surface mounted magnet mounts under header and surface mounted armature assembly mounts into door just under magnet assembly. Air gap adjustment is from top of door.
- **GF3000TJ (Top Jamb):** Surface mounted shear lock intended for use on inswinging doors that are flush with frame's inner face. Surface mounted armature assembly mounts onto top of door or top rail and surface mounted magnet mounts onto frame's face. Air gap adjustment is from top of door.

Options

- **DSM/MBS** - Door Status Monitor/Magnetic Bond Sensor

Allegion, the Allegion logo, Schlage, and the Schlage logo are trademarks of Allegion plc, its subsidiaries and/or affiliates in the United States and other countries. All other trademarks are the property of their respective owners.

About Allegion

Allegion (NYSE: ALLE) is a global pioneer in seamless access, with leading brands like CISA®, Interflex®, LCN®, Schlage®, SimonsVoss® and Von Duprin®. Focusing on security around the door and adjacent areas, Allegion secures people and assets with a range of solutions for homes, businesses, schools and institutions. Allegion had \$2.7 billion in revenue in 2020, and its security products are sold around the world. For more, visit www.allegion.com

KRYPTONITE ■ LCN ■  ■ STEELCRAFT ■ VON DUPRIN



© 2022 Allegion
004159, Rev. 02/22
www.allegion.com/us