

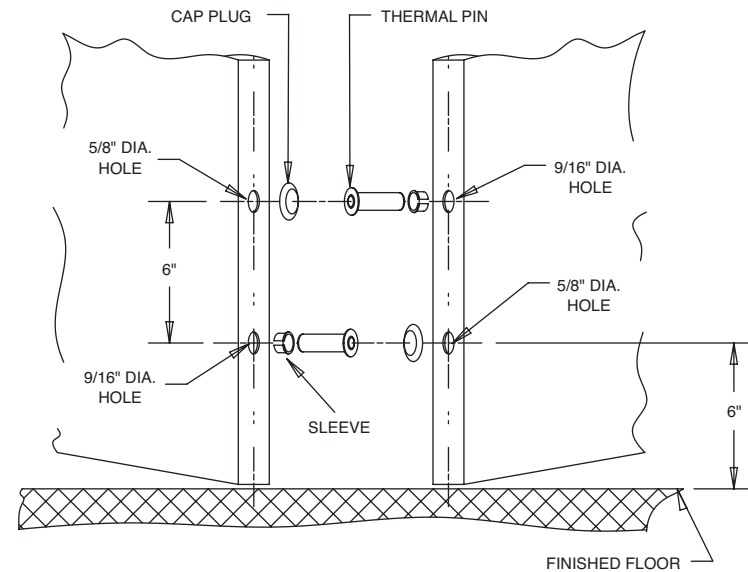
# INSTRUCTIONS FOR INSTALLING THERMAL PINS ON LISTED DOORS

For assistance, contact 800-727-5477

Patent pending and/or patent [www.assaabloydss.com/patents](http://www.assaabloydss.com/patents)

## INSTALLATION STEPS

1. CONSULT DOOR MANUFACTURER FOR PROPER THERMAL PIN ORIENTATION
2. MARK LOCATION OF HOLES FOR THERMAL PINS AS SHOWN ON TEMPLATE 4617
3. DRILL HOLES
4. POSITION SLEEVE IN 9/16" HOLE, INSERT THERMAL PIN INTO SLEEVE AND USING A WOOD BLOCK AS A SPACER, TAP THE THERMAL PIN AND SLEEVE INTO THE HOLE WITH A HAMMER
5. INSTALL CAP PLUG



## NOTE:

1. CONSULT DOOR MANUFACTURER FOR PROPER THERMAL PIN ORIENTATION
2. THERMAL PIN TO BE CENTERED IN DOOR THICKNESS
3. GAP BETWEEN THERMAL PIN AND RECEIVING HOLE 1/2" MAX
4. 20 MINUTE LISTED DOORS DO NOT REQUIRE THERMAL PINS
5. HANG DOORS AND HARDWARE PER THE MANUFACTURER'S INSTRUCTIONS. THE DOORS SHOULD BE SQUARE AND PLUMB AND HAVE THE CORRECT GAPS BETWEEN THE DOORS AND FINISHED FLOOR.

