

Experience a safer
and more open world



PIVOTS AND PIVOT SETS

Architectural Solutions for Durable
and Efficient Hanging of Doors

Application

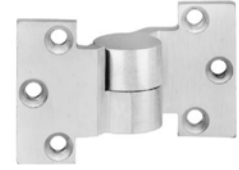
- Full Mortise
- Handed

Product Description & Features

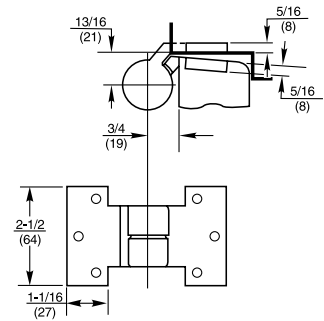
- Not load-bearing
- Maintains door alignment
- Available 3/4" (19mm) offset only
- Door edges must be beveled in 1/8" in 2"
- Used with 117, 117-1/4, 195 pivot sets and 127 and 427 floor closers
- Non-ferrous base material
- Doors 60" (1524mm) to 90" (2286mm) in height should use one intermediate pivot. Each additional 30" (762mm) of door height warrants another intermediate pivot
- Furnished with wood and machine screws

Compliance

- ANSI C07382



Technical Information



Application

- Half Surface
- Handed

Product Description & Features

- Flush door and frame applications only
- Optional intermediate pivot where door portion cannot be mortised
- Maintains door alignment
- 3/4" (19mm) offset only
- 1-3/4" (44mm) door only
- Door edges must be beveled in 1/8" in 2"
- Non-ferrous base material
- Doors up to 90" (2286mm) in height should use one intermediate pivot. Each additional 30" (762mm) warrants another intermediate pivot
- Furnished with wood and machine screws

Compliance

- ANSI C07331



Technical Information

