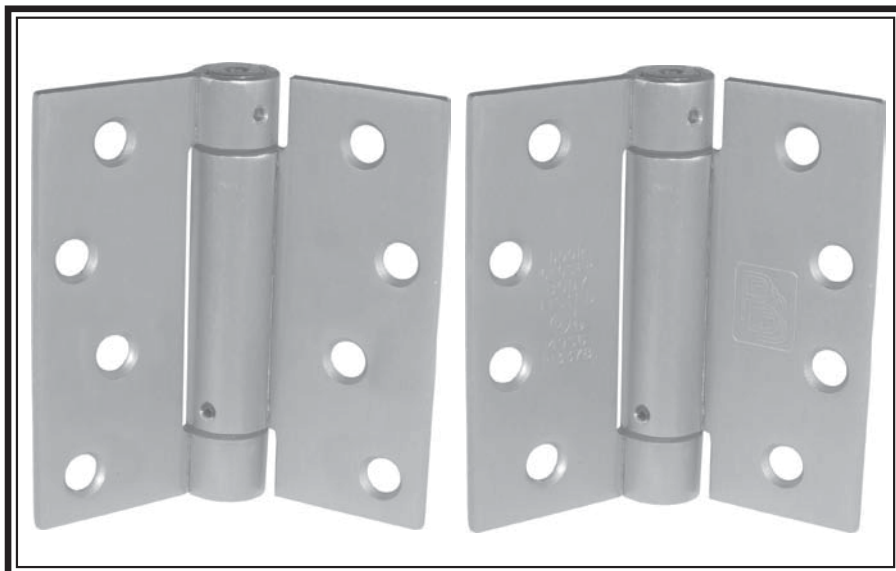




FULL MORTISE U.L. LISTED SPRING HINGE

STANDARD WEIGHT
4" x 4"

C3



SP81 (ANSI K8107)

Steel-Polished and Plated or Bonderized and Prime Coated for Painting.

SP51 (ANSI K5107)

Stainless Steel-Polished and Satin Finish

- Spring hinge door closer Model K8107 passed a 250,000 cycle UL test in accordance with Underwriters Laboratories for door closers, with or without integral smoke detectors.

- All hinges are ANSI template. 4" available in square and in 1/4" & 5/8" radius round corners.



GENERAL PRODUCT INFORMATION: PBB, Inc. template hinges are manufactured to close tolerances and meet all specifications and requirements set by the American National Standards Institute (ANSI).

OTHER SPECIFICATIONS:

Height of hinge: 4.00 + .000
- .015
Width: 4.00 ± .015

HINGE SWAGING: A standard swaging of our standard weight full mortise hinge when closed to parallel position provides a 1/16" clearance between leaves.

Maximum Door Size
For labeled doors 3' x 7' the maximum door size is based on the limits set forth by NFPA Standard #80. Labeled doors require Ball Bearing hinges.

| SERIES | SIZE | RECOMMENDED MAX DOOR WEIGHT (LBS.) | SPRING HINGE | BUTT HINGE |
|-------------------------------------|---------|------------------------------------|--------------|------------|
| FOR USE ON 1 3/4" DOOR, 1 3/8" DOOR | | | | |
| SP81 | 4" x 4" | 60 | 1 | 2 |
| | | 85 | 2 | 1 |
| | | 110 | 3 | - |

For non-labeled doors 4'0" wide 4" x 4" Spring hinges are not recommended. For non-labeled doors over 7'6" in height, use an additional hinge for each additional 30" of height or fraction thereof.

NOTES:

1. For complete warranty protection use all spring hinges or a combination of spring hinges and ball bearing hinges. Do not use plain bearing hinges as this voids all factory warranties.
2. Use of gasket for smoke or sound protection, wind condition or unbalanced air pressure may prevent door from latching. Additional closing power would be required. See installation instruction sheet.

MATERIAL GAUGE: .130 ± .005

| |
|------------------------|
| 4" STANDARD SCREW SIZE |
| FHMS - 12-24 x 1/2" |
| FHWS - 12 x 1-1/4" |

PACKAGING INFORMATION:

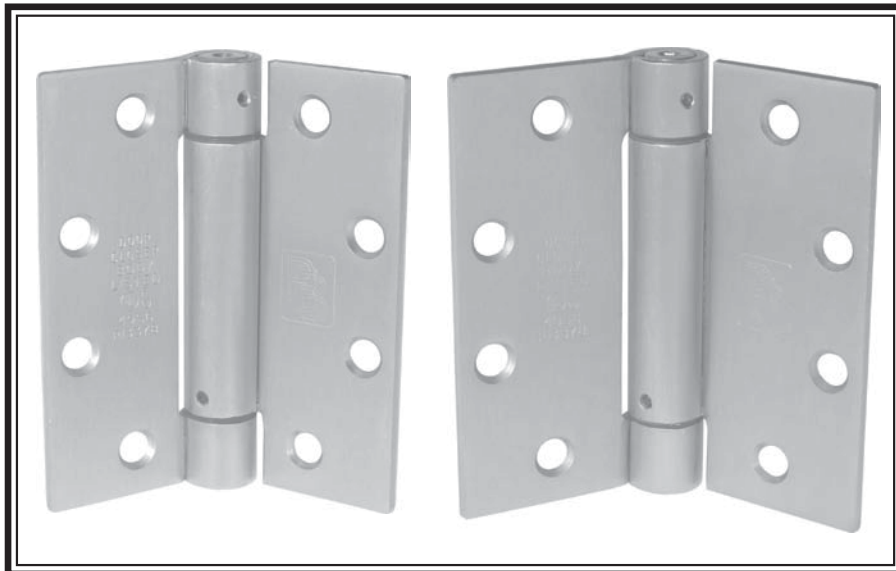
One hinge per plastic bag, 3 hinges and 1 screw pack per unit carton.
16 unit carton or 48 hinges per master shipping carton.
1 screw pack includes all machine screws (24), and 1/2 wood screws (12). ATMS & AWS also available.



FULL MORTISE U.L. LISTED SPRING HINGE

STANDARD WEIGHT
4 1/2" x 4" 4 1/2" x 4 1/2"

C4



SP81 (ANSI K8107)
Steel-Polished and Plated or Bonderized and Prime Coated for Painting.

SP51 (ANSI K5107)
Stainless Steel-Polished and Satin Finish

- Spring hinge door closer Model K8107/ K5107 passed a 1,000,000 cycle UL test in accordance with Underwriters Laboratories for door closers, with or without integral smoke detectors.

- Both models comply and meet ANSI/BHMA specifications for ANSI/BHMA A156.17 Grade 1 and bear U.L.'s listing mark.

- All hinges are ANSI template.



GENERAL PRODUCT INFORMATION: PBB, Inc. template hinges are manufactured to close tolerances and meet all specifications and requirements set by the American National Standards Institute (ANSI).

HINGE SWAGING: A standard swaging of our standard weight full mortise hinge when closed to parallel position provides a 1/16" clearance between leaves.

OTHER SPECIFICATIONS:

Height of hinge:
 4.50 + .000 for 4-1/2" x 4"
 - .015
 4.50 + .000 for 4-1/2" x 4-1/2"
 - .015
 Width:
 4.00 ± .015 for 4-1/2" x 4"
 4.50 ± .015 for 4-1/2" x 4-1/2"

| SERIES | SIZE | RECOMMENDED MAX DOOR WEIGHT (LBS.) | SPRING HINGE | BUTT HINGE |
|------------------------|----------------------------|------------------------------------|--------------|------------|
| FOR USE ON 1 3/4" DOOR | | | | |
| SP81 | 4 1/2"x4" 4 1/2"x4 1/2" | 70 | 1 | 2 |
| | | 100 | 2 | 1 |
| | | 150 | 3 | - |

Maximum Door Size
 For labeled doors 3' x 7' the maximum door size is based on the limits set forth by NFPA Standard #80. Labeled doors require Ball Bearing hinges.
 For non-labeled doors 4'0" wide 4" x 4" Spring hinges are not recommended. For non-labeled doors over 7'6" in height, use an additional hinge for each additional 30" of height or fraction thereof.

NOTES:
 1. For complete warranty protection use all spring hinges or a combination of spring hinges and ball bearing hinges. Do not use plain bearing hinges as this voids all factory warranties.
 2. Use of gasket for smoke or sound protection, wind condition or unbalanced air pressure may prevent door from latching. Additional closing power would be required. See installation instruction sheet.

MATERIAL GAUGE:
 .134 ± .005 for 4-1/2" x 4"
 .134 ± .005 for 4-1/2" x 4-1/2"

| |
|---|
| 4-1/2" STANDARD SCREW SIZE |
| FHMS - 12-24 x 1/2" FHWS - 12 x 1-1/4" |

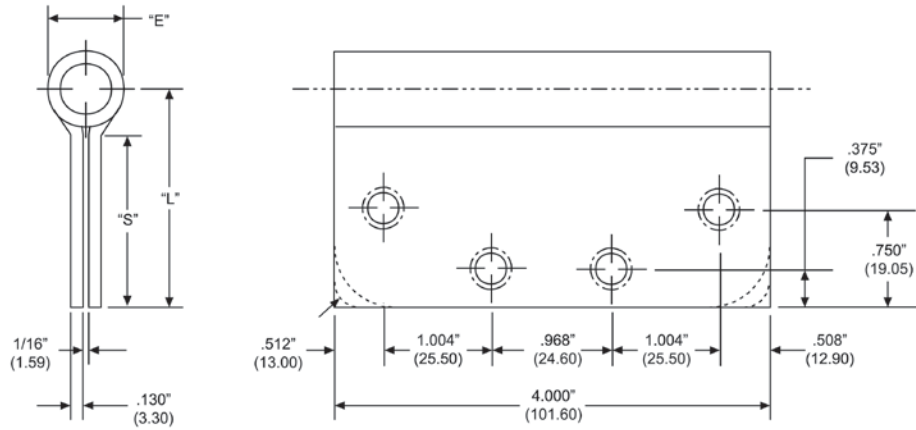
PACKAGING INFORMATION:
 One hinge per plastic bag, 3 hinges and 1 screw pack per unit carton.
 16 unit carton or 48 hinges per master shipping carton.
 1 screw pack includes all machine screws (24), and 1/2 wood screws (12). ATMS & AWS also available.



FULL MORTISE STEEL SPRING TEMPLATE

SP
4" x 4"

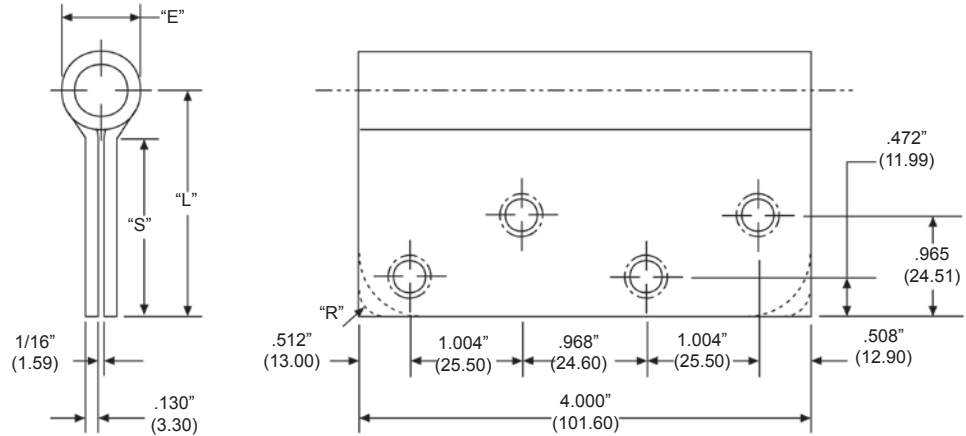
Template



L18

SPY40
4" x 4"

Non-Template



| Part Number | | | Gauge of Metal | "E" Outside Dia. | "L" Leaf Width | "S" Swage Line | "R" Corner Radius |
|-------------|-------|------------|----------------|------------------|----------------|----------------|--------------------|
| Steel | Brass | Stainless | | | | | |
| SP81/SPY81 | - | SP51/SPY51 | .130" | .780" | 2.00" | 1.54" | Square, 1/4", 5/8" |

NOTE:

- 1 screw pack includes (18) machine screws and (18) wood screws.
- Screw size: FHMS - 10-24 x 1/2"
FHWS - 10 x 1"
- All hinges are ANSI template.

PBB, Inc.
World Class Hinges
1311 E. Philadelphia Street • Ontario • CA 91761 • USA
PBB reserves the right to make changes without notice.

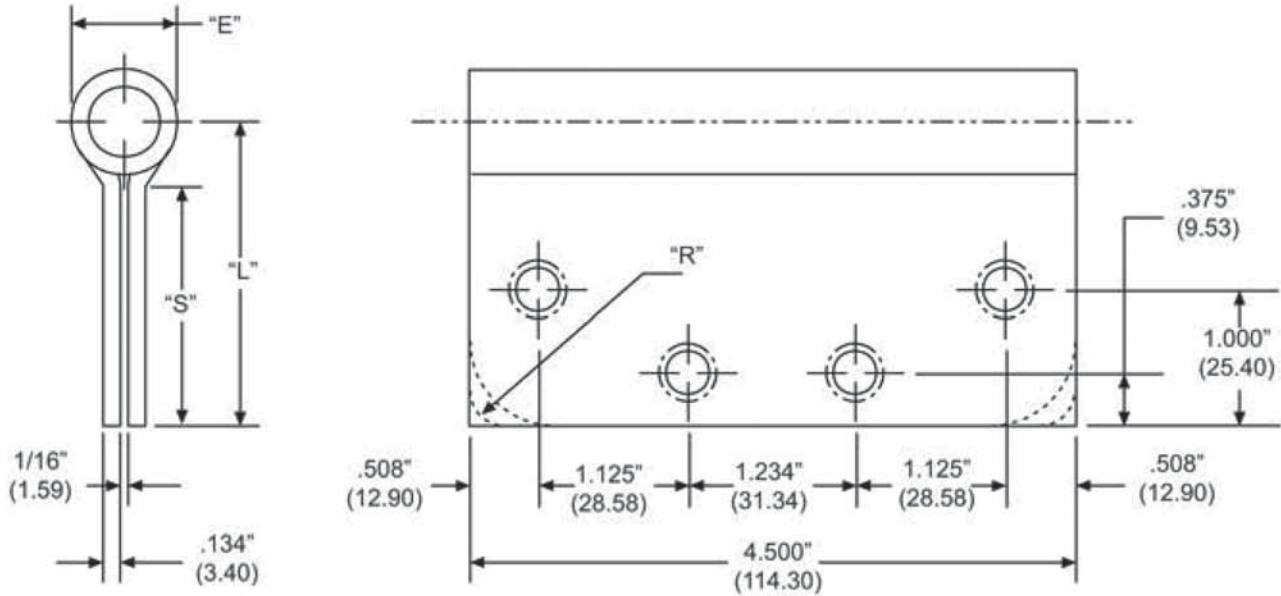
Template:SP40/SPY40



FULL MORTISE STEEL SPRING TEMPLATE

SP

4-1/2" x 4", 4-1/2" x 4-1/2"



L19



| Part Number | | | Gauge of Metal | "E" Outside Dia. | "L" Leaf Width | "S" Swage Line | "R" Corner Radius |
|-------------|-------|-----------|----------------|------------------|----------------|----------------|--------------------|
| Steel | Brass | Stainless | | | | | |
| SP81 | - | SP51 | .134" | .790" | 2.00" | 1.54" | Square, 1/4", 5/8" |
| SP81 | - | SP51 | .134" | .790" | 2.25" | 1.75" | Square, 1/4", 5/8" |

NOTE:

- 1 screw pack includes all machine screws (24), and 1/2 wood screws (12). ATMS & AWS also available.
- Screw size: FHMS - 12-24 x 1/2"
FHWS - 12 x 1-1/4"
- All hinges are ANSI template.

Template: SP45