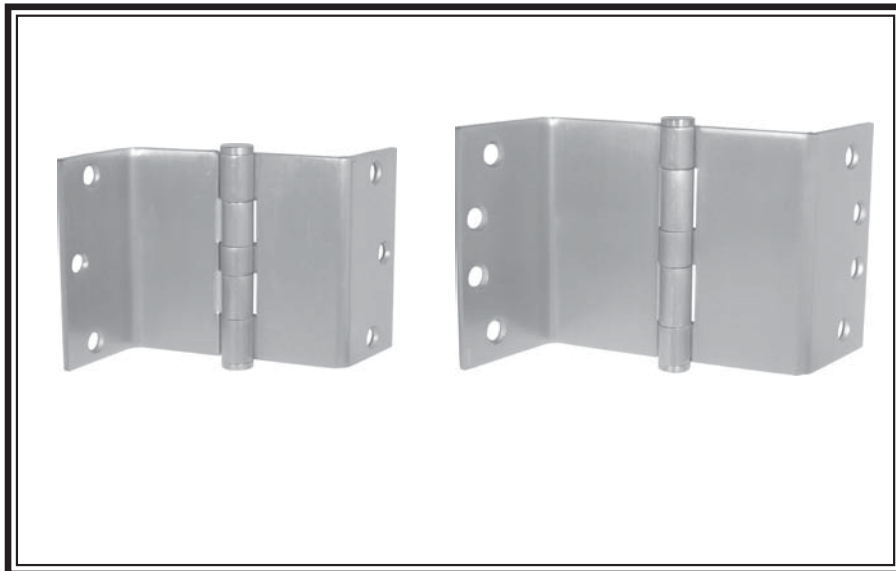




SWING CLEAR FULL MORTISE TEMPLATE PLAIN BEARING
STANDARD WEIGHT
3 1/2" - 4"



SCP81 (ANSI A8123)
Steel-Polished and Plated or Bonderized and Prime Coated for Painting.

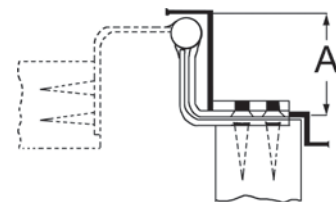
SCP51 (ANSI A5123)
Stainless Steel-Polished and Satin Finish

H1

- Designed to swing doors completely clear of the opening when door is opened 95° door projects 3/32" past stop of jamb.
- All swing clear hinges are made for reversible applications.
- For hospital type, add HT to suffix of part number.
- For use on medium weight doors requiring low frequency service.
- Recommended for 34" x 7'0" x 1-3/8" door not to exceed 80 lbs.
- All hinges are ANSI template.

GENERAL PRODUCT INFORMATION: PBB, Inc. template hinges are manufactured to close tolerances and meet all specifications and requirements set by the American National Standards Institute (ANSI).

For use in hospitals, institutional or commercial type buildings for barrier-free environment. Wherever doors are required to meet barrier-free codes (ADA) or are required to swing completely clear of the openings so that wide equipment can pass through without damaging doors, frames or equipment, reducing opening maintenance.



OTHER SPECIFICATIONS:

Height of hinge:	+ .000	
	3.50 - .015	for 3-1/2"
	+ .000	
	4.00 - .015	for 4"
Width:	3.50 ± .015	for 3-1/2"
	4.00 ± .015	for 4"

Minimum Clearance Required
 Dimension "A" (inches) 2-1/8" for 3-1/2"
 2-1/2" for 4"



MATERIAL GAUGE:

.123 ± .005 for 3-1/2"
 .130 ± .005 for 4"

3-1/2" STANDARD SCREW SIZE
FHMS - 10-24 x 1/2" FHWS - 10 x 1"

4" STANDARD SCREW SIZE
FHMS - 12-24 x 1/2" FHWS - 12 x 1-1/4"

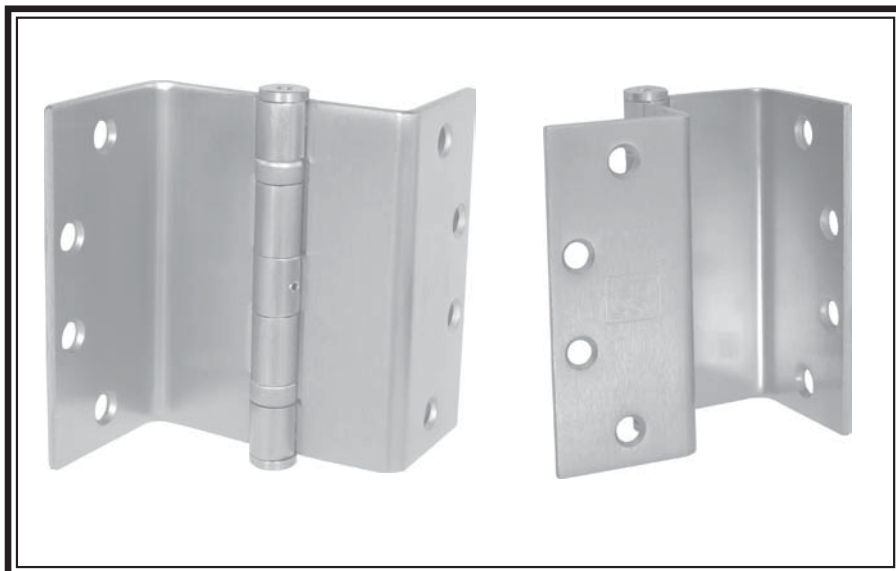
PACKAGING INFORMATION:

One hinge per plastic bag, 3 hinges and 1 screw pack per unit carton.
 12 unit carton or 36 hinges per master shipping carton.
 1 screw pack includes all machine screws (24), and 1/2 wood screws (12). ATMS & AWS also available.
 For 3-1/2 x 3-1/2, 1 screw pack includes (18) machine screws and (18) wood screws.



SWING CLEAR FULL MORTISE TEMPLATE BALL BEARING
STANDARD WEIGHT
4 1/2"

H2



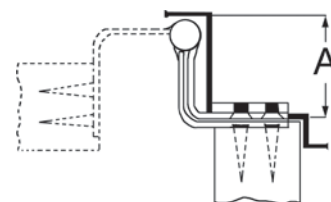
SCBB81 (ANSI A8122)
Steel-Polished and Plated or Bonderized and Prime Coated for Painting.

SCBB51 (ANSI A5122)
Stainless Steel-Polished and Satin Finish

- All swing clear hinges are made for reversible applications.
- Designed to swing doors completely clear of the opening when door is opened 95°.
- When opened 90° door projects 3/32" past stop of jamb.
- Recommended for 3'0" x 7'0" x 1-3/4" doors not to exceed 150 lbs.
- For medium weight doors receiving average frequency service.
- For hospital type, add HT to suffix of part number.
- All hinges are ANSI template.

GENERAL PRODUCT INFORMATION: PBB, Inc. template hinges are manufactured to close tolerances and meet all specifications and requirements set by the American National Standards Institute (ANSI).

For use in hospitals, institutional or commercial type buildings for barrier-free environment. Wherever doors are required to meet barrier-free codes (ADA) or are required to swing completely clear of the openings so that wide equipment can pass through without damaging doors, frames or equipment, reducing opening maintenance.



OTHER SPECIFICATIONS:

Height of hinge:
 4.50 + .000 for 4-1/2"
 - .015

Minimum Clearance Required
 Dimension "A" (inches) 2-1/8"

***NOTE: Specify square or beveled when ordering product.**

MATERIAL GAUGE:

.134 ± .005 for 4-1/2"

4-1/2" STANDARD SCREW SIZE
FHMS - 12-24 x 1/2"
FHWS - 12 x 1-1/4"

PACKAGING INFORMATION:

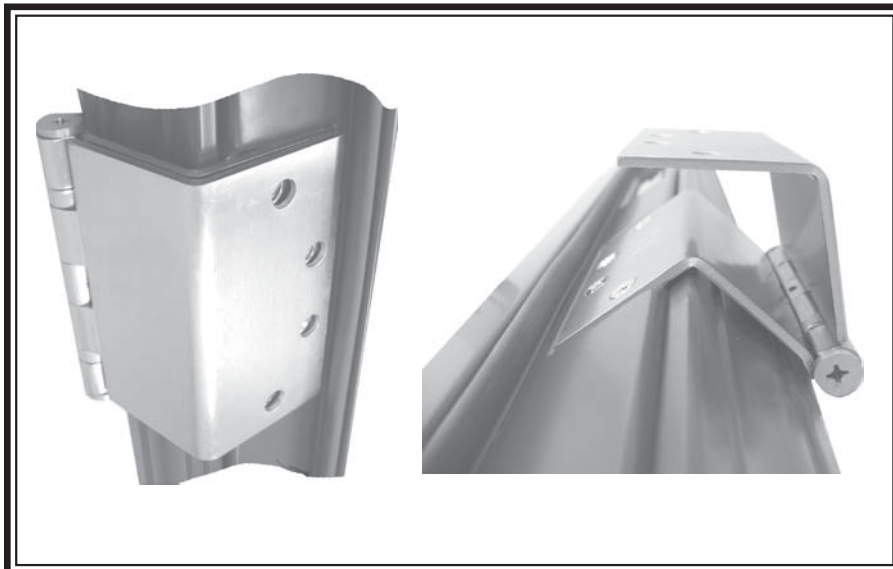
One hinge per plastic bag, 3 hinges and 1 screw pack per unit carton.
 12 unit carton or 36 hinges per master shipping carton.
 1 screw pack includes all machine screws (24), and 1/2 wood screws (12). ATMS & AWS also available.





FOR TIMELY/REDIFRAME INSTALLATIONS
SWING CLEAR FULL MORTISE TEMPLATE BALL BEARING

STANDARD WEIGHT
4 1/2"



SCBB81 (ANSI A8122)
Steel-Polished and Plated or Bonderized and Prime Coated for Painting.

SCBB51 (ANSI A5122)
Stainless Steel-Polished and Satin Finish

H3

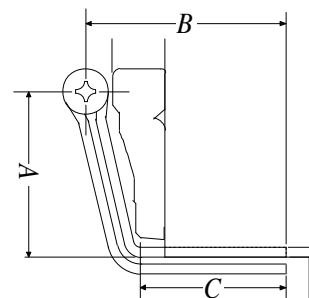
- All swing clear hinges are made for reversible applications.
- Designed to swing doors completely clear of the opening when door is opened 95°.
- When opened 90° door projects 3/32" past stop of jamb.
- Recommended for 3'0" x 7'0" x 1-3/4" doors not to exceed 150 lbs.
- For medium weight doors receiving average frequency service.
- For hospital type, add HT to suffix of part number.
- All hinges are ANSI template.

GENERAL PRODUCT INFORMATION: PBB, Inc. template hinges are manufactured to close tolerances and meet all specifications and requirements set by the American National Standards Institute (ANSI).

For use in hospitals, institutional or commercial type buildings for barrier-free environment. Wherever doors are required to meet barrier-free codes (ADA) or are required to swing completely clear of the openings so that wide equipment can pass through without damaging doors, frames or equipment, reducing opening maintenance.

THIS SPECIAL MODEL OF SWING CLEAR HINGE IS MADE TO SPECIFICALLY FIT TIMELY OR REDIFRAME TRIM CASING APPLICATIONS.

MATERIAL GAUGE:
 .134 ± .005 for 4-1/2"



OTHER SPECIFICATIONS:

Height of hinge: + .000
 4.50 - .015 for 4-1/2"

Minimum Clearance Required
 Dimension "A" (inches) 2-3/16"
 Dimension "B" (inches) 2-21/32"
 Dimension "C" (inches) 2-15/16"

4-1/2" STANDARD SCREW SIZE
FHMS - 12-24 x 1/2"
FHWS - 12 x 1-1/4"

PACKAGING INFORMATION:

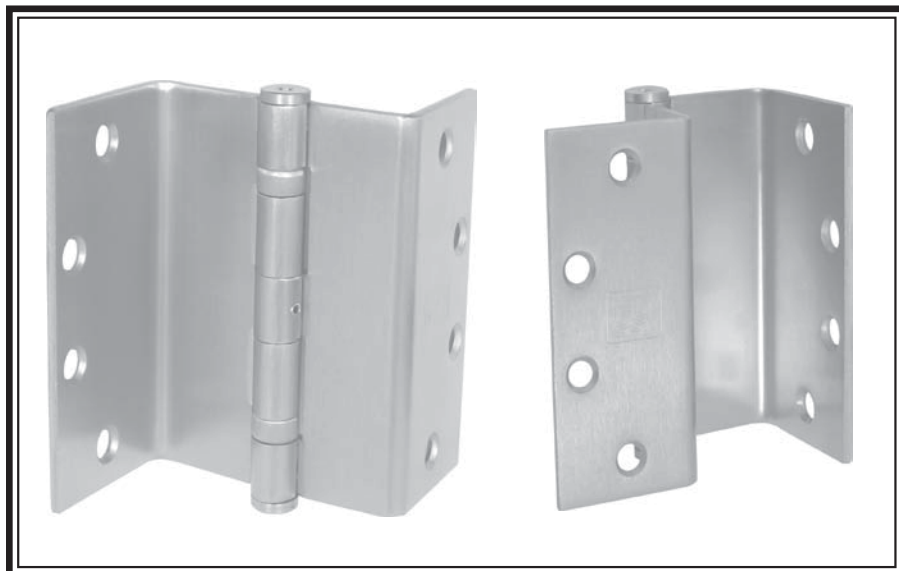
One hinge per plastic bag, 3 hinges and 1 screw pack per unit carton.
 12 unit carton or 36 hinges per master shipping carton.
 1 screw pack includes all machine screws (24), and 1/2 wood screws (12). ATMS & AWS also available.





SWING CLEAR FULL MORTISE TEMPLATE BALL BEARING
STANDARD WEIGHT
5"

H4



GENERAL PRODUCT INFORMATION: PBB, Inc. template hinges are manufactured to close tolerances and meet all specifications and requirements set by the American National Standards Institute (ANSI).

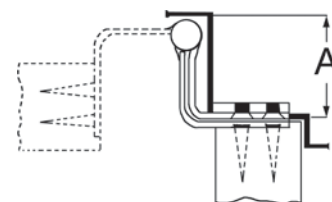
For use in hospitals, institutional or commercial type buildings for barrier-free environment. Wherever doors are required to meet barrier-free codes (ADA) or are required to swing completely clear of the openings so that wide equipment can pass through without damaging doors, frames or equipment, reducing opening maintenance.

MATERIAL GAUGE:
 .146 ± .005 for 5"

SCBB81 (ANSI A8122)
Steel-Polished and Plated or Bonderized and Prime Coated for Painting.

SCBB51 (ANSI A5122)
Stainless Steel-Polished and Satin Finish

- All swing clear hinges are made for reversible applications.
- Designed to swing doors completely clear of the opening when door is opened 95°.
- When opened 90° door projects 3/32" past stop of jamb.
- Recommended for 3'0" x 7'0" x 1-3/4" doors not to exceed 150 lbs.
- For medium weight doors receiving average frequency service.
- For hospital type, add HT to suffix of part number.
- All hinges are ANSI template.



OTHER SPECIFICATIONS:

Height of hinge:
 5" + .000 for 5"
 - .015

Minimum Clearance Required
 Dimension "A" (inches) 2-1/8"

***NOTE: Specify square or beveled when ordering product.**

5" STANDARD SCREW SIZE
FHMS - 12-24 x 1/2"
FHWS - 12 x 1-1/4"

PACKAGING INFORMATION:

One hinge per plastic bag, 3 hinges and 1 screw pack per unit carton.
 12 unit carton or 36 hinges per master shipping carton.
 1 screw pack includes all machine screws (24), and 1/2 wood screws (12). ATMS & AWS also available.

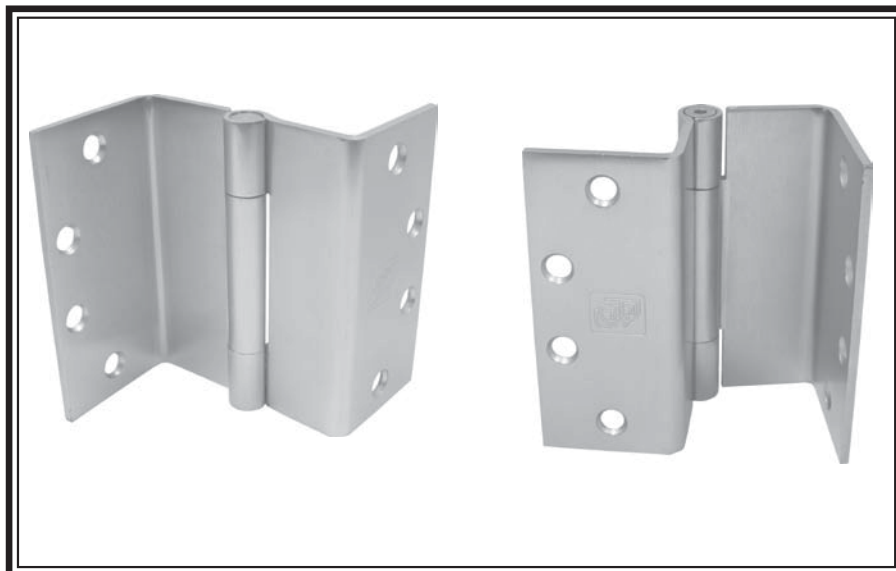




SWING CLEAR FULL MORTISE CONCEALED BEARING

STANDARD WEIGHT
4 1/2"

H10



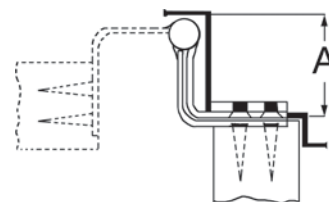
SCCB81 (ANSI A8122)
Steel-Polished and Plated or Bonderized and Prime Coated for Painting.

SCCB51 (ANSI A5122)
Stainless Steel-Polished and Satin Finish

- All swing clear hinges are made for reversible applications.
- Designed to swing doors completely clear of the opening when door is opened 95°.
- When opened 90° door projects 3/32" past stop of jamb.
- Recommended for 3'0" x 7'0" x 1-3/4" doors not to exceed 150 lbs.
- For medium weight doors receiving average frequency service.
- For hospital type, add HT to suffix of part number.
- Concealed bearing for trouble free long life application.
- All hinges are ANSI template.

GENERAL PRODUCT INFORMATION: PBB, Inc. template hinges are manufactured to close tolerances and meet all specifications and requirements set by the American National Standards Institute (ANSI).

For use in hospitals, institutional or commercial type buildings for barrier-free environment. Wherever doors are required to meet barrier-free codes (ADA) or are required to swing completely clear of the openings so that wide equipment can pass through without damaging doors, frames or equipment, reducing opening maintenance.



OTHER SPECIFICATIONS:

Height of hinge:
 4.50 + .000 for 4-1/2"
 - .015

MATERIAL GAUGE:

.134 ± .005 for 4-1/2"

Minimum Clearance Required
 Dimension "A" (inches) 2-1/8"

NOTE: Specify square or beveled when ordering product.

4-1/2" STANDARD SCREW SIZE
FHMS - 12-24 x 1/2"
FHWS - 12 x 1-1/4"



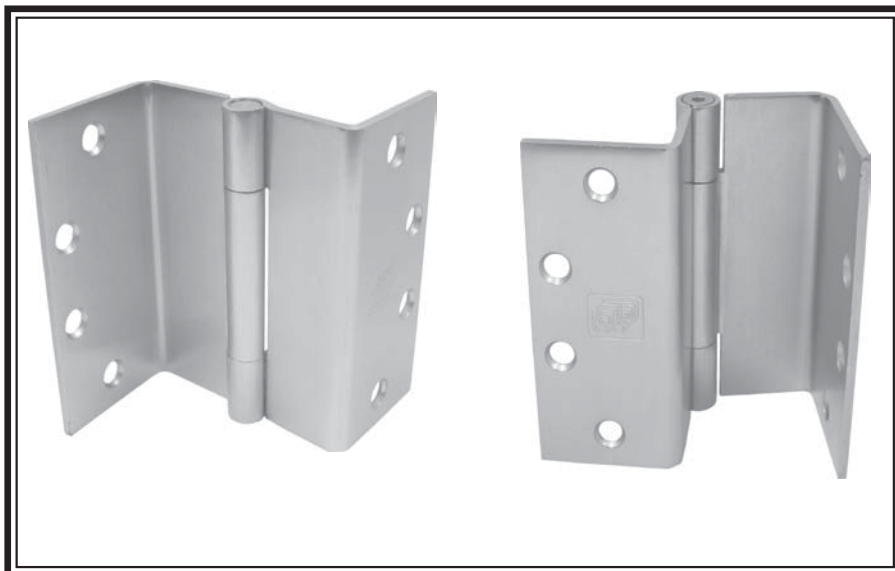
PACKAGING INFORMATION:

One hinge per plastic bag, 3 hinges and 1 screw pack per unit carton.
 12 unit carton or 36 hinges per master shipping carton.

1 screw pack includes all machine screws (24), and 1/2 wood screws (12). ATMS & AWS also available.



SWING CLEAR FULL MORTISE CONCEALED BEARING
STANDARD WEIGHT
5"



GENERAL PRODUCT INFORMATION: PBB, Inc. template hinges are manufactured to close tolerances and meet all specifications and requirements set by the American National Standards Institute (ANSI).

For use in hospitals, institutional or commercial type buildings for barrier-free environment. Wherever doors are required to meet barrier-free codes (ADA) or are required to swing completely clear of the openings so that wide equipment can pass through without damaging doors, frames or equipment, reducing opening maintenance.

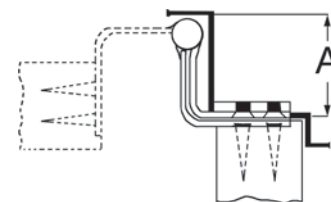
MATERIAL GAUGE:
 .146 ± .005 for 5"

SCCB81 (ANSI A8122)
Steel-Polished and Plated or Bonderized and Prime Coated for Painting.

SCCB51 (ANSI A5122)
Stainless Steel-Polished and Satin Finish

H11

- All swing clear hinges are made for reversible applications.
- Designed to swing doors completely clear of the opening when door is opened 95°.
- When opened 90° door projects 3/32" past stop of jamb.
- Recommended for 3'0" x 7'0" x 1-3/4" doors not to exceed 150 lbs.
- For medium weight doors receiving average frequency service.
- For hospital type, add HT to suffix of part number.
- Concealed bearing for trouble free long life application.
- All hinges are ANSI template.



OTHER SPECIFICATIONS:

Height of hinge:
 5" + .000 for 5"
 - .015

Minimum Clearance Required
 Dimension "A" (inches) 2-1/8"

NOTE: Specify square or beveled when ordering product.

4-1/2" STANDARD SCREW SIZE
FHMS - 12-24 x 1/2"
FHWS - 12 x 1-1/4"

PACKAGING INFORMATION:

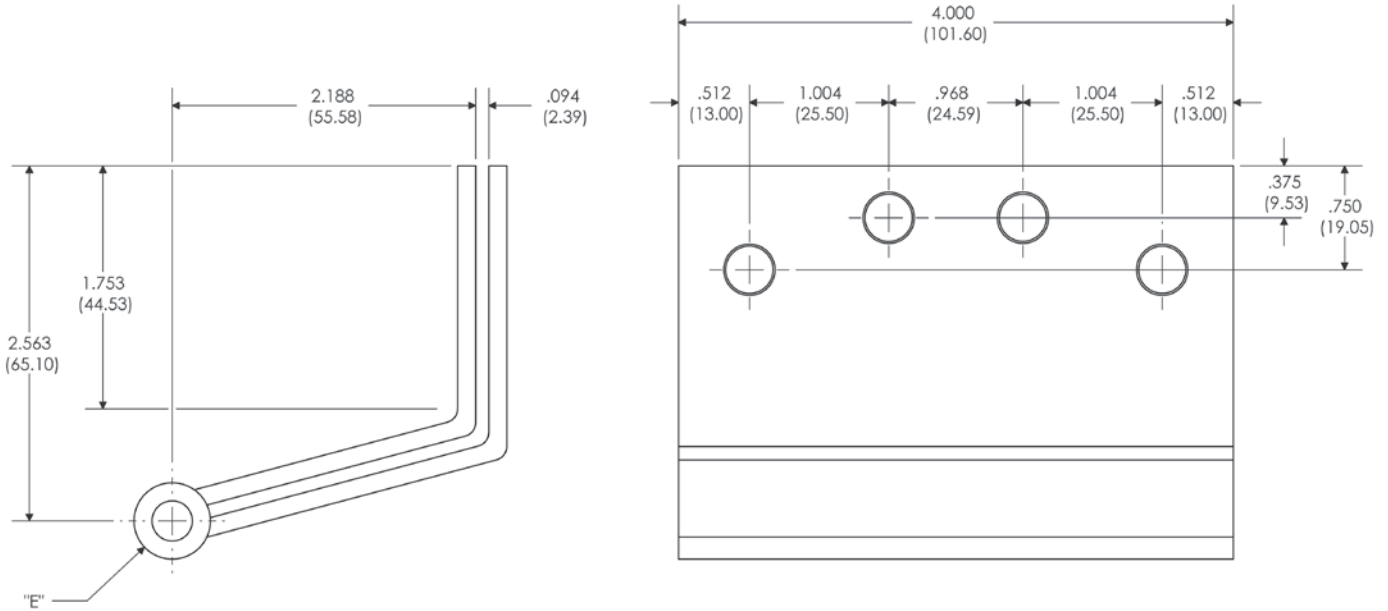
One hinge per plastic bag, 3 hinges and 1 screw pack per unit carton.
 12 unit carton or 36 hinges per master shipping carton.
 1 screw pack includes all machine screws (24), and 1/2 wood screws (12). ATMS & AWS also available.





SWING CLEAR FULL MORTISE TEMPLATE PLAIN BEARING

SCPB
4"



L52

Part Number			Gauge of Metal	"E" Outside Dia.
Steel	Brass	Stainless		
SCPB81	-	SCPB51	.130"	.550"

NOTE:

- 1 screw pack includes (18) machine screws and (18) wood screws.
- Screw size: FHMS - 12-24 x 1/2"
FHWS - 12 x 1-1/4"
- All hinges are ANSI template.

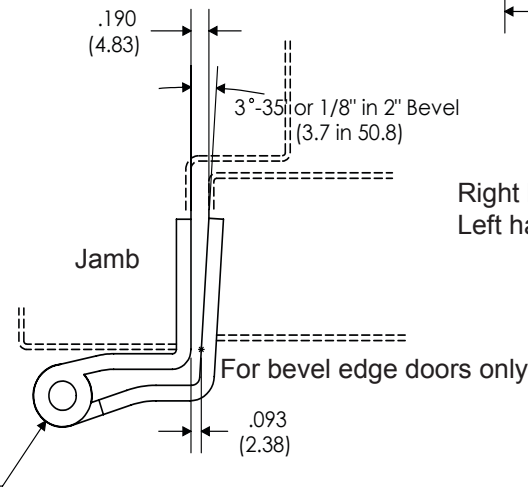
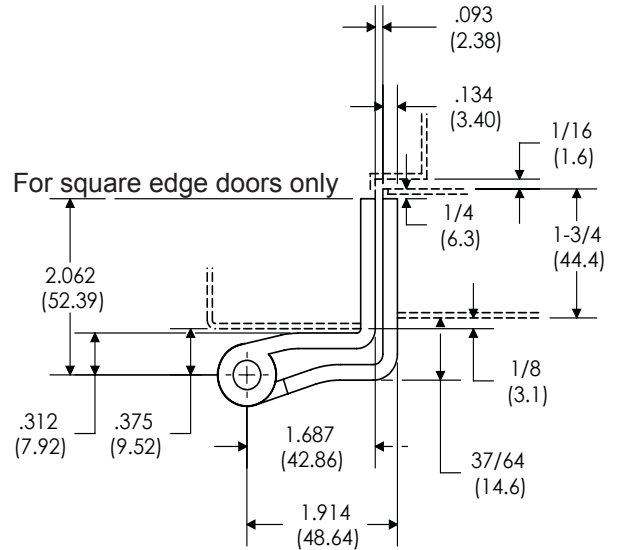
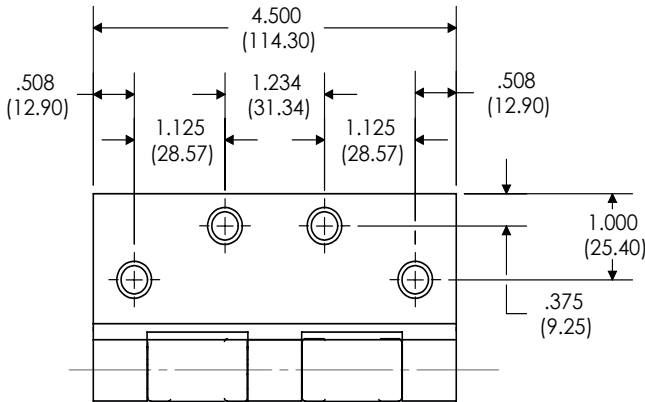
Template: SCBB8140



SWING CLEAR FULL MORTISE TEMPLATE BALL BEARING

SCFB-SCBB-SCCB

4-1/2"



Right hand hinge shown
Left hand opposite

NOTE: This hinge alters the normal pivot point of door. For door closers, friction or overhead door holders, to be used in conjunction with this hinge, consult manufacturer for the device to be used for application details.

Part Number			Gauge of Metal	"E" Outside Dia.
Steel	Brass	Stainless		
SCBB81/ SCBB81B	-	SCBB51/ SCBB51B	.134"	.603"
SCCB81/ SCCB81B	-	SCCB51/ SCCB51B	.134"	.603"

NOTE:

- 1 screw pack includes all machine screws (24), and 1/2 wood screws (12). ATMS & AWS also available.
- Screw size: FHMS - 12-24 x 1/2"
FHWS - 12 x 1-1/4"
- All swing clear hinges are made for reversible applications.
- All hinges are ANSI template.

Template: SCBB8145

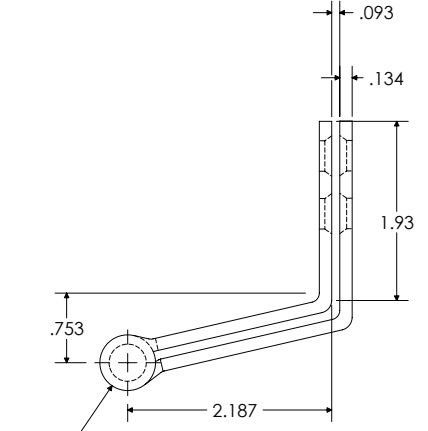
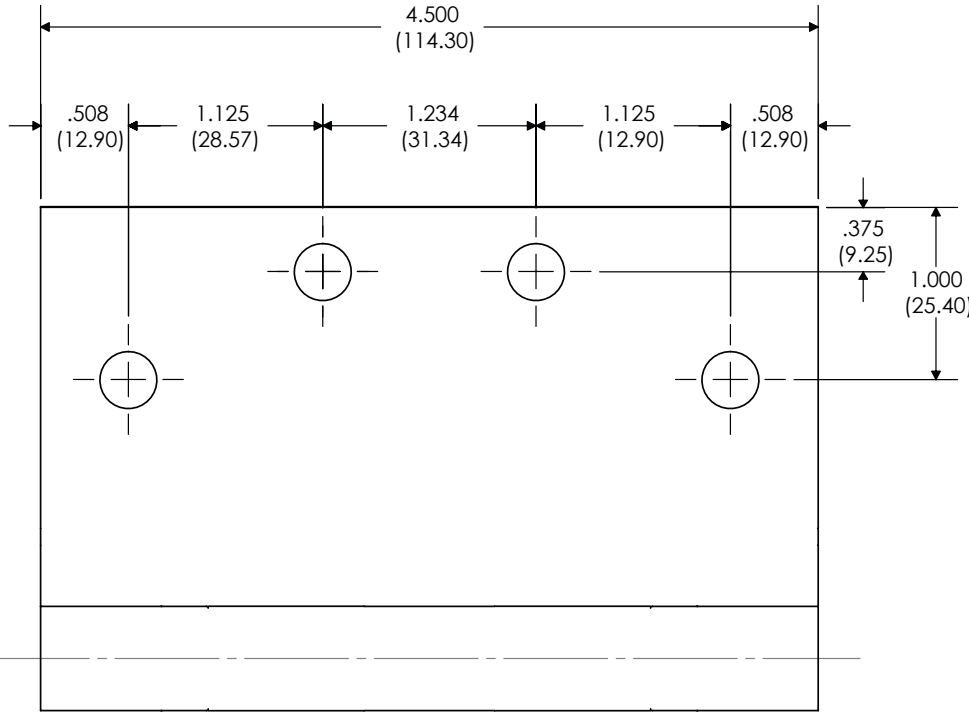
L53



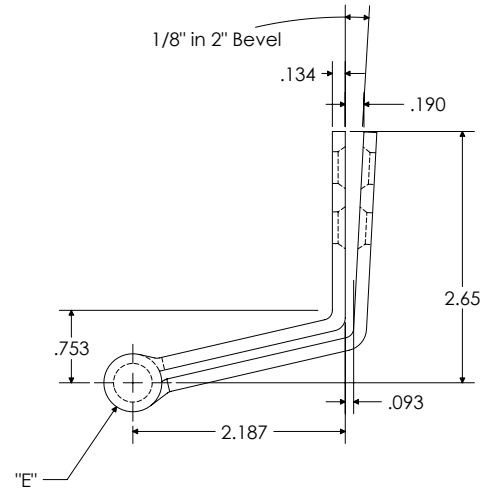
SWING CLEAR FULL MORTISE TEMPLATE BALL BEARING

SCBB
4-1/2"

FOR REDIFRAME



L54



Part Number			Gauge of Metal	"E" Outside Dia.
Steel	Brass	Stainless		
SCBB81	-	SCBB51	.134"	.603"

NOTE:

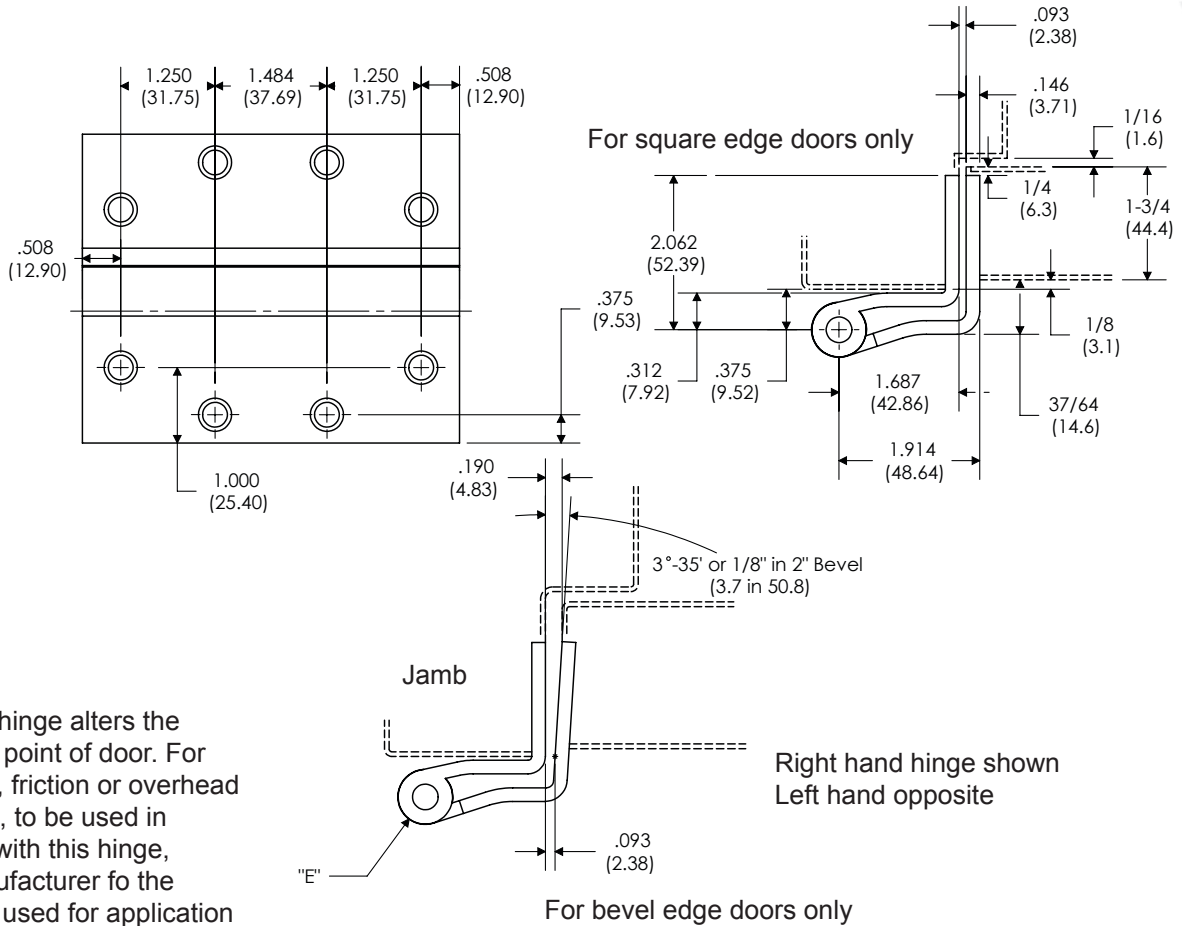
- 1 screw pack includes all machine screws (24), and 1/2 wood screws (12). ATMS & AWS also available.
- Screw size: FHMS - 12-24 x 1/2"
FHWS - 12 x 1-1/4"
- This special model of swing clear hinge is made to specifically fit timely or rediframe trim casing applications.
- All hinges are ANSI template.

Template: SCBB8145T



SWING CLEAR FULL MORTISE TEMPLATE BALL BEARING

SCBB - SCCB
5"



NOTE: This hinge alters the normal pivot point of door. For door closers, friction or overhead door holders, to be used in conjunction with this hinge, consult manufacturer for the device to be used for application details.

Part Number			Gauge of Metal	"E" Outside Dia.
Steel	Brass	Stainless		
SCBB81/ SCBB81B	-	SCBB51/ SCBB51B	.146"	.624"
SCCB81/ SCCB81B	-	SCCB51/ SCCB51B	.146"	.624"

NOTE:

- 1 screw pack includes all machine screws (24), and 1/2 wood screws (12). ATMS & AWS also available.
- Screw size: FHMS - 12-24 x 1/2"
FHWS - 12 x 1-1/4"
- All swing clear hinges are made for reversible applications.
- All hinges are ANSI template.

Template: SCBB8150