

PARTS



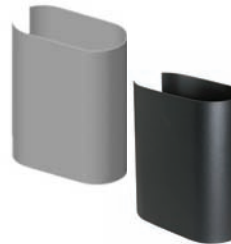
ADA1015P
Kit: transformer, armored door cord, end links 50' of low voltage cable, power port cnt.



ADA1007P
Battery assembly



ADA1001
Door arm assembly



ADA1002
Operator cover – black
ADA1004
Operator cover – aluminum



ADA1010P*
Operator body - ADAEZ PRO
ADA1010NY*
Operator body - NYC TRD
ADA1010E*
Operator body - Europe

* battery not included



ADA1028W
Wireless Interface Module



ADA1005WP
Electronic control kit for Pro setup and PC board (white board)
ADA1005WN
Electronic controlkit for NYCTRD setup and PC board (white board)



ADA1022
Kit to convert SPDT switch to DPDT switch

Part #	Description
ADA1009	Mounting hardware (includes rivetnut installation toolkit)
ADA1006	Operator mounting bracket with covers
ADA1023	External battery charger kit
ADA1025	Multi-purpose timer
ADA1026	Bottom cover with screws
ADA1031	Hand held remote control
ADA1031E	Hand held remote control (Europe)
ADA1021	Kit to convert to pull side
ADA1024	Kit to convert to push side
ADA1008	Wireless push button transmitter (circuit board only)
ADA1029	Occupancy sensor (models 5839, 5819 only)
ADA1015C	Door cord WIM
ADA102SP	24VDC power supply, WIM, and mounted sensor