



427E

Saddle Threshold

PRODUCT CUT SHEET

PROJECT:
SUBMITTED BY:
DATE:
NOTES:

Material and Features

Aluminum Alloy 6063, T5 Temper

- ▶ 7" Wide x 1/2" Tall
- ▶ Fluted Top
- ▶ BHMA Certified to ANSI/BHMA A156.21 1,000 Lb. Load Test
- ▶ Typical Wall Thickness: .109"
- ▶ Weight: 1.08 Lbs./Ft.
- ▶ #10 x 1 1/2" FH Zinc Plated Wood Screws Included

Finishes

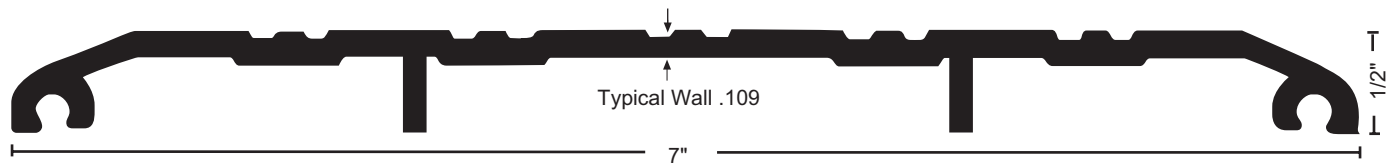
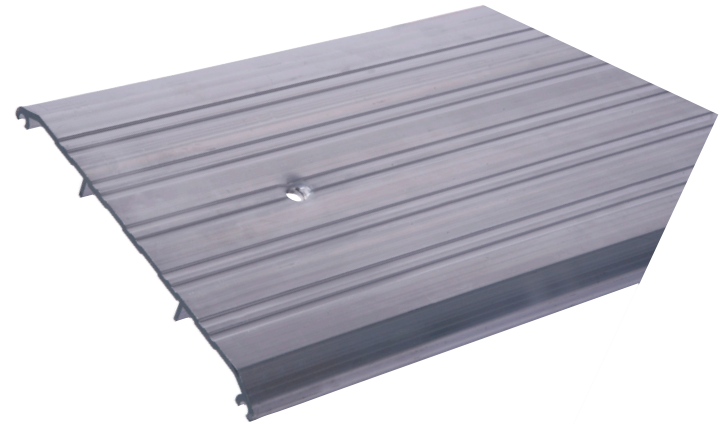
Mill Finish

DKB - Dark Bronze Finish

Options

 *Optional Vinyl Foot Seal
Used Instead of Caulking to Increase the
Weather Resistance of the Threshold*

 *Optional Slip Resistant
SIA Finish*



NGP-THR-427E-PCS-0321-A