

# 9530 Series



The 9530 Senior Swing by LCN is an ADA door operator that is a two-in-one swing door operator. Senior Swing operator when activated, opens doors automatically for wheelchair access, yet allows for manual operation for regular pedestrian traffic.

## Features

<b>Certifications</b>	Grade 1 - ANSI A156.19, UL325/228, UL1998, ADA, 100 Hour Salt Spray, Meets BAA - Buy American Act
<b>Fluid</b>	All Weather Fluid
<b>Handing</b>	Handed
<b>Door width</b>	<ul style="list-style-type: none"> <li>Minimum 33" - 48"</li> <li>Single door - width per leaf 33" minimum to 48" maximum</li> </ul>
<b>Warranty</b>	2 years

<b>Fasteners</b>	Machine Screws (MS)
<b>Mounting</b>	Single door, surface mount, offset pivot, butt hinge, pull side
<b>Arms</b>	Standard arm (3077T)
<b>Finishes/colors/powder coat</b>	<ul style="list-style-type: none"> <li>628 Aluminum, Anodized</li> <li>710 Dark Brown, Anodized</li> </ul>

**Special templates** | Customized installation templates or products may be available to solve non-standard applications. Contact LCN Product Support for assistance.

Mounting	Handing	Finish	Cover	Arm function
Surface mount single door	Handed	Standard anodized	Standard (single lever)	Offset pivot arm
Surface mount simultaneous pair	Non-handed	Metal	Regular (double lever)	Center pivot arm
Surface mount independent pair			Double egress (push/pull)	
Concealed single door				
Concealed simultaneous pair				
Concealed independent pair				

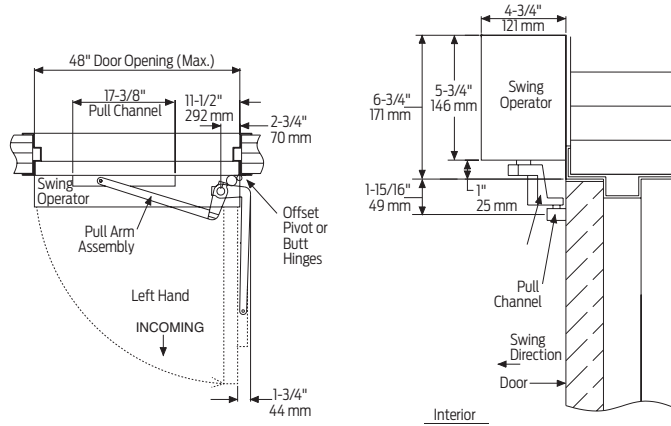
■ Available  
■ Not available

## Mounting details

### Top jamb single door mounting

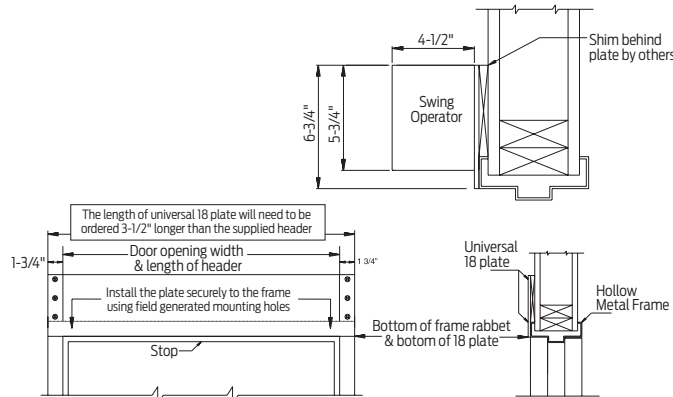
#### Offset pivot/butt hinge, center pivot, pull

Note: Cannot be used with swing clear hinges, pocket pivots or balanced doors.



#### Hollow metal frame

The 18 plate is 1/4" thick and will need to be ordered 3 1/2" longer than the header to allow for mounting the angle brackets to the vertical side jambs. See illustration below.



Note: Suggested installation.

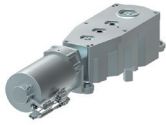
Butt hinges	Should not exceed 5" (127 mm) in width
Reveal	Should not exceed 4" (102 mm)
Top rail	Minimum 2 3/4" (70 mm)
Head frame	Minimum 1 3/4" (44 mm); face frame 6 3/4" (171 mm) total operator clearance
Opening and closing time	<ul style="list-style-type: none"> <li>Variable by adjustments to the electronic control box</li> <li>Maximum hold open time adjustable up to approximately 32 seconds</li> </ul>
System diagram	See page 45 for typical system wiring and page 44 for electrical data
Maximum opening	Template allows 90 degree power opening and 90 degree manual opening

Notes:

- Push 'N Go permits non-switch activation with a power boost providing additional latching force
- Electromechanical unit with microprocessor control
- Digital keypad for easy setup
- 36" header length is standard. Specify 33" - 48" max
- Double Door Header available up to 98", specify other length 49"- 98" max
- Consult factory regarding this option
- Adjustable hold open period of 2 - 32 seconds in automatic or manual mode
- Actuators available separately, see pages 100-117

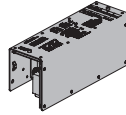
# Accessories

## Motor gearbox



- 9530-3454**  
**Standard Motor Gearbox (MGB)**
- Senior Swing
  - Handed
  - Driving mechanism for operator
  - Provides maximum 15 lbs opening force

## Control box



- 9530-3462**  
**Standard Controller (CTRL)**
- Electronic controlling device for Senior Swing

## Arm



- 9530-3077PLCM**  
**Standard Arm Assembly with Track Roller (STDTRKARM2)**
- Handed
  - Track roller included (includes 3038, 3077T, 3034 and 73)



- 9530-3077T**  
**Standard Arm (STDTRKARM)**
- Handed
  - Track roller not included

## Track



- 9530-3038**  
**Track**
- Non-handed
  - Includes 3034 and 73



- 9530-73**  
**Track End Cap**
- Black plastic end caps

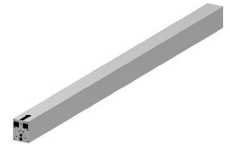


- 9530-3034**  
**Roller**
- Quiet low friction roller assembly

## Header



- 9530-3572HL**  
**Standard Mounting Header (HDR)**
- Standard
  - Single door, single operator
  - Specify length 33" to 48" maximum



- 9530-3572DD**  
**Double Door Header (HDR2)**
- Standard
  - Double door, single operator
  - Specify length 49" to 48" maximum

## Brackets



- 9530-275**  
**Mounting Bracket**
- Motor gearbox mounting bracket for 2 3/4" offset pivot or butt hinge installations
  - Front bracket

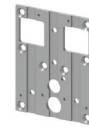


- 9530-3018**  
**Rear Mounting Bracket**
- Motor gearbox mounting bracket
  - Rear bracket



- 9530-334-1**  
**Angle Brackets (HLB)**
- Mounting bracket for surface applications (includes 2 mounting brackets)

## End cap



- 9530-334**  
**Header End Caps**
- With openings for wiring



- 9530-334-2**  
**Dress plates (HLD)**
- Metal finish end cap

## Installation accessories



- 9530-11A**  
**Spindle Plate**
- Hides bottom of motor gearbox
  - Completes header box
  - Cutout allows for motor gearbox shaft
  - For 2 3/4" offset pivot or butt hinge installations



- 9530-12**  
**Filler**
- Plate blank
  - Completes length of header box (specify length)



- 9530-18**  
**Mounting Plate**
- Optional mounting plate for standard hollow metal door frames
  - Specify length 36 1/2" to 101 1/2" maximum, when angle brackets
  - Specify length 33" to 98" maximum when using dress plates

NOTE: The length of a universal 18 plate will need to be ordered 3-1/2" longer than the supplied header when using angle brackets

Introduction  
 Product selection guide  
 Pneumatic systems  
 Auto equalizers  
 2610/4810/4820/4840/7900 Series  
 Electrohydraulic systems  
 Auto equalizers  
 6400/4630/4640 Series  
 Electromechanical systems  
 Benchmark  
 9130/9140/9150 Series  
 Electromechanical systems  
 Senior Swing  
 2810/2850/2860/9530/9540/9550/9560 Series  
 Actuators and accessories

## Ordering information

### How-to-order 9530 Series operators

#### 1. Specify hand

- Right hand (RH)
- Left hand (LH)

#### 2. Specify header/length

- Standard Mounting Header (HDR)  
(Specify length 33" to 48")
- Double Door Header (HDR2)  
(Specify length 49" to 98")

#### 3. Select finish

- Standard anodized finish \_\_\_\_\_  
Aluminum, Clear Anodized (628)  
or Dark Bronze, Anodized (710)

### Operator will be shipped with:

- Standard motor gearbox (1 LH and 1 RH)
- Standard control box (2 ea)
- Header (at specified length, 36" standard)
- Standard Arm (3077T)
- Standard track with track roller
- Machine screws  
(unless options listed below are selected)

### Operator options

#### Mounting plate

- Plate, \_\_\_ (Specify Length 33" to 101 1/2")

### Table of sizes

#### Door width



Indicates recommended range of door width for operator.

Note: For all Senior Swing Series. Single Door - Width per leaf 33" minimum, 48" maximum.

# 9540 Series



The 9540 Senior Swing by LCN is an ADA door operator that is a two-in-one swing door operator. Senior Swing operator when activated, opens doors automatically for wheelchair access, yet allows for manual operation for regular pedestrian traffic.

## Features

<b>Certifications</b>	Grade 1 - ANSI A156.19, UL325/228, UL1998, ADA, 100 Hour Salt Spray, Meets BAA - Buy American Act
<b>Fluid</b>	All Weather Fluid
<b>Handing</b>	Handed
<b>Door width</b>	<ul style="list-style-type: none"> <li>Combined width min 33" - 48"</li> <li>Single door - width per leaf 33" minimum to 48" maximum</li> </ul>
<b>Warranty</b>	2 years

<b>Fasteners</b>	Machine Screws (MS)
<b>Mounting</b>	Single door, surface mount, offset pivot, butt hinge, push side
<b>Arms</b>	Regular Arm (3077)
<b>Finishes/colors/powder coat</b>	<ul style="list-style-type: none"> <li>628 Aluminum, Anodized</li> <li>710 Dark Brown, Anodized</li> </ul>

**Special templates** | Customized installation templates or products may be available to solve non-standard applications. Contact LCN Product Support for assistance.

Mounting	Handing	Finish	Cover	Arm function
Surface mount single door	Handed	Standard anodized	Standard (single lever)	Regular (push/pull)
Surface mount simultaneous pair	Non-handed	Metal	Regular (double lever)	Offset egress (push/pull)
Surface mount independent pair			Offset pivot arm	Center pivot arm
Concealed single door				
Concealed simultaneous pair				
Concealed independent pair				

■ Available  
■ Not available

Introduction  
 Product selection guide  
 Pneumatic systems / Auto equalizers / 2610/4810/4820/4840/7900 Series  
 Electrohydraulic systems / Auto equalizers / 6400/4630/4640 Series  
 Electromechanical systems / Benchmark / 9130/9140/9150 Series  
 Electromechanical systems / Senior Swing / 2810/2850/2860/9530/9540/9550/9560 Series  
 Actuators and accessories