

4810 Series



The 4810 Auto Equalizer™ is LCN's pneumatically powered multi-door solution. This low-energy automatic operator provides easy access for people with disabilities, or the elderly. Designed primarily for manual opening applications that occasionally require automatic opening.

Features

Certifications	ADA, 100 Hour Salt Spray, Meets BAA - Buy American Act	Cover	Metal Cover (MC)
Body construction	<ul style="list-style-type: none"> Cast iron body Full complement bearing 1 1/2" diameter piston 3/4" diameter double heat treated pinion journal 	Fasteners	Wood and Machine Screws (WMS)
Fluid	All weather fluid	Mounting	Top jamb (pull side)
Handing	Non-handed	Arms	Single lever arm with standard track
Size	Adjustable spring size 1-4	Finishes/colors/ powder coat	<ul style="list-style-type: none"> 689 Aluminum 690 Statuary Bronze 691 Light Bronze 693 Black 695 Dark Bronze 696 Brass Custom colors optional Optional SRI primer - powder coat only Optional plated finishes
Warranty	2 years		

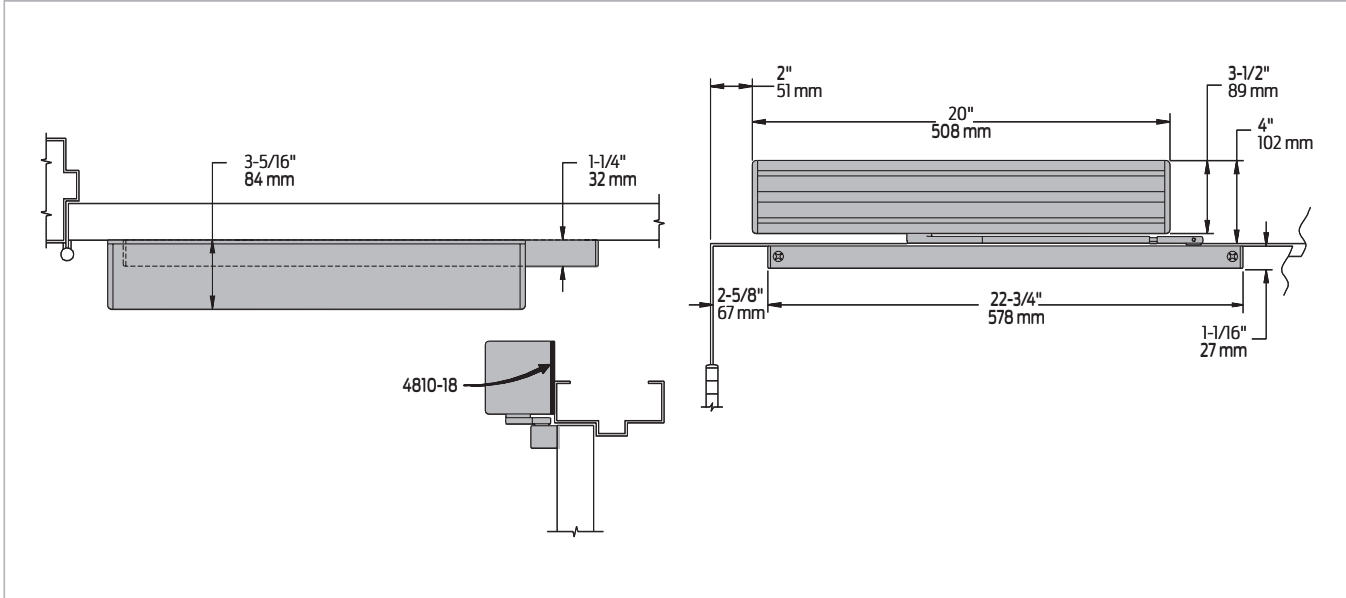
Special templates

Customized installation templates or products may be available to solve non-standard applications. Contact LCN Product Support for assistance.

Mounting	Finish	Cover	Cylinder	Arm function*
Top jamb (pull) side Top jamb (push) side Parallel arm Concealed	Powder coat Plated Plastic Metal	Non-handed Non-sized Accessibility Automatic operator Hold open DPS	90° Standard (single) Regular (double) EDA CUSH SCUSH	
■ Available ■ Not available	■ Available ■ Not available	■ Available ■ Not available ♿ Meets ADA requirements (power mode). * See individual series for maximum manual opening.		

Mounting details

Top jamb (pull side) mounting



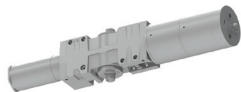
Butt hinges	Should not exceed 5" (127 mm) in width
Auxiliary stop	Recommended
Reveal	Should not exceed 1/8" (3 mm)
Top rail	Minimum 1 1/8" (29 mm)
Head frame	Minimum 2" (51 mm)
System diagram	See pages 9-10 for typical system wiring, and pages 28-29 for electrical and pneumatic data for control boxes
Maximum opening	<ul style="list-style-type: none"> ▪ Templating allows 90° power opening and 170° manual opening ▪ Please note that many track style door closers are capable of allowing 180° of door swing ▪ Track style closers are at their weakest closing force at 180° ▪ Consult factory for applications where exterior or large/heavy door must swing 180°

Notes:

- Requires control box with integral compressor or control box using auxiliary air supply
- See control box pages 28-29 and actuators and accessories, pages 100-117
- Guard rails/safety mats not required

Accessories

Cylinders



4811-3971
Cast Iron Cylinder Assembly (CYL)

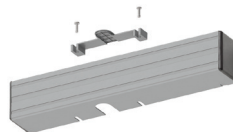
- Non-handed
- Standard



4811-3071
Cast Iron Cylinder Assembly (CYL)

- Non-handed
- Mounting plate
- Standard

Covers



4810-72MC
Metal Cover (MC)

- Non-handed
- With black end caps
- Standard

Arms



4810-3077T
Standard Arm (STDTRKARM)

- Non-handed
- Track roller not included with arm

Tracks



4810-3038
Standard Track (STDTRK)

- Non-handed
- Standard

Installation accessories



4810-3034
Track roller

- Quiet low friction roller assembly
- Shoulder dimension "X" = 1/8" (3mm)

Ordering information

How-to-order 4810 Series operators

1. Select finish

- Standard powder coat _____
Aluminum (689), Dark Bronze (695),
Statuary Bronze (690), Light Bronze
(691), Black (693), Brass (696)

Operator will be shipped with:

- Standard cylinder
- Metal cover
- Standard arm
- Track roller
- Standard track
- Wood and machine screws
(unless options listed below are selected)

Operator options

Finish

- Custom powder coat (RAL) _____
- Plated finish _____ (cover only)

Screw packs

- Through Bolt¹ Wood and Machine Screws
(TBWMS)

Special template

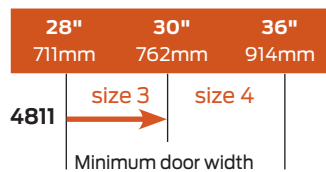
- ST- _____

1. Specify door thickness if other than 1 3/4".

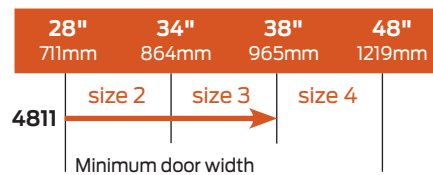
Table of sizes

- Non-sized 4810 Series cylinder is adjustable from size 1 through size 4 and is shipped set to size 3
- Closing power of 4810 Series closers may be increased 50%

Exterior (and vestibule) door width



Interior door width



→ Indicates recommended range of door width for operator.
Note: Minimum door width 28" (711 mm).