

4640 Series

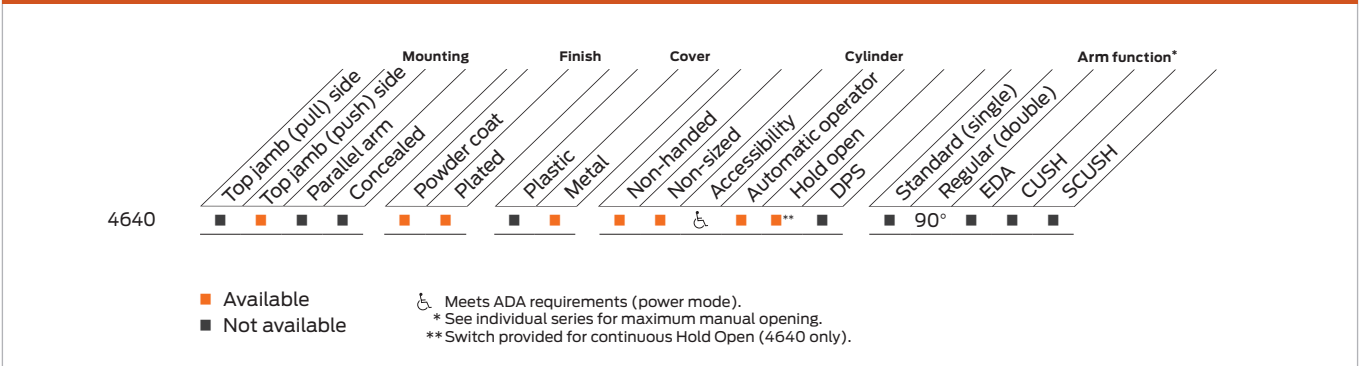


The 4640 auto equalizer is LCN's smart and reliable electrically powered low-energy automatic operator. It provides easy access for people with disabilities, or the elderly. Designed primarily for manual opening applications that occasionally required automatic opening.

Features

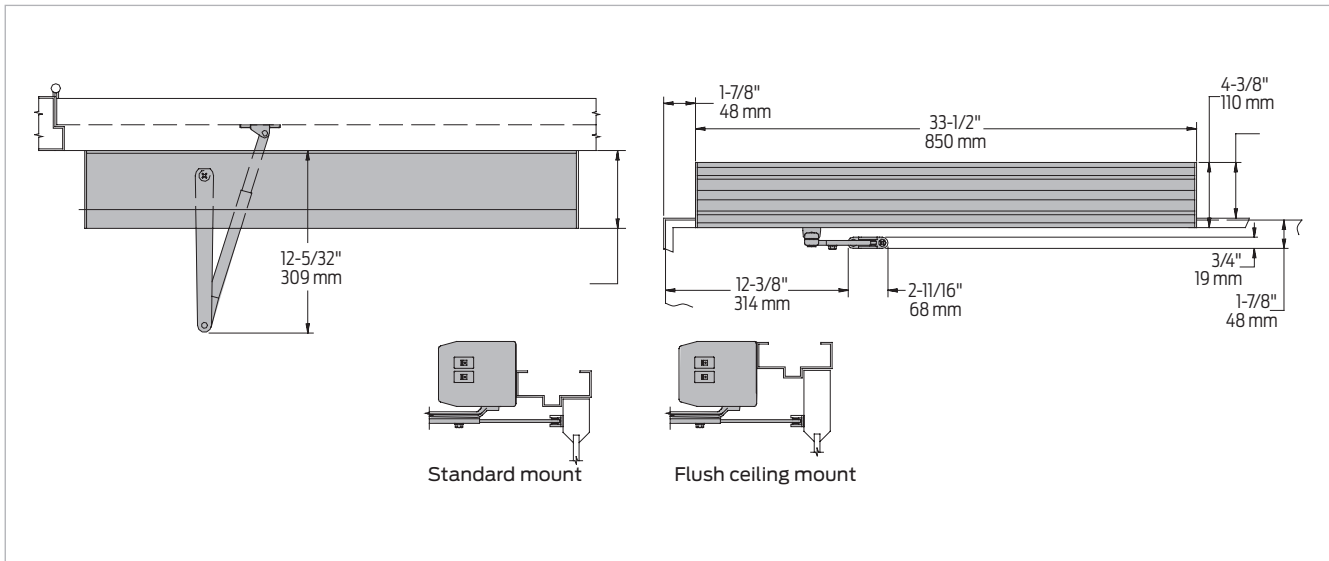
Certifications	Grade 1 - ANSI A117.1, A156.19, UL 10C, ADA, 100 Hour Salt Spray, Meets BAA - Buy American Act	Cover	Metal Cover (MC)
Body construction	<ul style="list-style-type: none"> Cast iron body Full complement bearing 1 1/2" diameter piston 3/4" diameter double heat treated pinion journal 	Fasteners	Wood and Machine Screws (WMS)
Fluid	All weather fluid	Mounting	Top jamb (push side)
Handing	Non-handed	Arms	<ul style="list-style-type: none"> Regular Arm (REGARM), standard Long Arm (LONG), optional
Size	Adjustable spring size 2-5	Finishes/colors/ powder coat	<ul style="list-style-type: none"> 689 Aluminum 690 Statuary Bronze 691 Light Bronze 693 Black 695 Dark Bronze 696 Brass Custom colors optional Optional SRI primer - powder coat only Optional plated finishes*
Warranty	2 years		*End caps are black

Special templates | Customized installation templates or products may be available to solve non-standard applications. Contact LCN Product Support for assistance.



Mounting details

Top jamb (push side) mounting



Butt hinges	Should not exceed 5" (127 mm) in width
Auxiliary stop	Recommended
Reveal	<ul style="list-style-type: none"> 4 1/2" (114 mm) allows up to 90° power opening and 100° manual opening 8" (203 mm) allows up to 90° power opening and 100° manual opening with long arm where standard rod and shoe is replaced with optional long rod and shoe, 4640-79LR
Top rail	<ul style="list-style-type: none"> Minimum 1 3/4" (44 mm) Flush ceiling installation requires 3 3/4" (95 mm) minimum
Head frame	Minimum 1 3/4" (44 mm) (the standard mounting plate is also used to meet flush ceiling conditions)
Opening time and force	<ul style="list-style-type: none"> Variable by adjustments to the electronic control module located on the operator assembly Maximum hold open time adjustable up to approximately five minutes
System diagram	See page 33 for typical system wiring and pages 34-35 for electrical data
Maximum opening	<ul style="list-style-type: none"> Templating allows 90° power opening and 100° manual opening Consult factory for all pivot mounted installations

Notes:

- Actuators are sold separately, see pages 100-117
- Comes with a digital control box utilizing a 4040XP heavy duty door closer with on-board diagnostics and power supply
- Has a factory default memory that include "No Destruct" drive system
- Guard rails or safety mats not required
- 4640 has easily accessible switches to provide on/off and continuous hold open functions
- CS options provides concealed on/off power switch
- Control module provides timing and sequential door functions, electric strike controls and adjustments for opening speed and force

Accessories

Cylinders



**4642-3971
Cast Iron Cylinder
Assembly (CYL)**

- Non-handed
- Standard



**4642-3071
Cast Iron Cylinder
Assembly (CYL)**

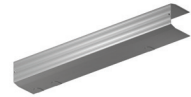
- Non-handed
- Mounting plate
- Includes; 4640-3454 Motor Clutch, 4640-3180 I/O Board Assembly and 4640-3462 Controller
- Standard



**4642-3071CS
Cast Iron Cylinder Assembly (CYL)**

- Non-handed
- Mounting plate
- Includes; 4640-3454 Motor Clutch, 4640-3180 I/O Board Assembly and 4640-3462 Controller
- Same as a 4640-3071 assembly except on/ off switch is concealed in endcap and no hold open switch is included (Separate key switches suggested)
- Optional

Covers



**4640-72MC
Metal Cover (MC)**

- Non-handed
- Standard

Arm



**4640-3077
Regular Arm (REGARM)**

- Non-handed



**4640-3077L
Long Arm (LONG)**

- Includes long rod and shoe, 4640-79LR for deep reveals



**4640-79
Rod and Shoe**

- For use with regular arm



**4640-79LR
Long Rod and Shoe**

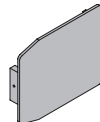
- Used for long arm with deep reveals

Installation accessories



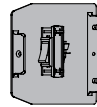
**4640-334
Switch End Cap**

- End cap (black powder finish coat only) with cut outs for installing on/off and hold open switches



**4640-334-2
Blank End Cap**

- Black powder coat only



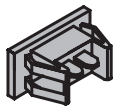
**4640-334CS
Switch End Cap**

- End cap and switch (black powder coat only) for concealed switch option



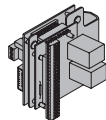
**4640-3179-1
On/Off Switch Assembly**

- Black rocker switch
- Plugs into high voltage PC board



**4640-3179-2
Hold Open Switch Assembly**

- Black rocker switch
- Field wired to low voltage PC board



**4640-3180
PC Board Assembly**

- High and low voltage PC boards connected to mounting bracket



**4640-3454
Motor/Clutch Assembly**

- A geared assembly in an LCN automatic operator that incorporates a "no destruct" feature



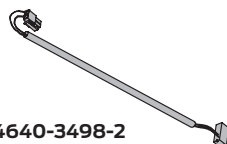
**4640-3462
Control Box Assembly**

- Digital controller with built-in 12/24 VDC power supply
- Programming and timing functions are adjusted on controller



**4640-3498-1
Ribbon Cable Connector**

- 16 wire ribbon cable connecting PC board assembly to controller



**4640-3498-2
AC Power Cable**

- 2 wire cable to connect 120 VAC from PC board assembly to controller

Introduction
 Product selection guide
 Pneumatic systems / Auto equalizers / 2610/4810/4820/4840/7900 Series
 Electrohydraulic systems / Auto equalizers / 6400/4630/4640 Series
 Electromechanical systems / Benchmark / 9130/9140/9150 Series
 Electromechanical systems / Senior Swing / 2810/2850/2860/9530/9540/9550/9560 Series
 Actuators and accessories

Ordering information

How-to-order 4640 Series operators

1. Select finish

- Standard powder coat _____
Aluminum (689), Dark Bronze (695),
Statuary Bronze (690), Light Bronze
(691), Black (693), Brass (696).

Operator will be shipped with:

- Standard cylinder
- Metal cover
- Regular arm
- Wood and machine screws
(unless options listed below are selected)

Operator options

Cylinder assembly

- Cast Iron Cylinder Assembly (CYL)
(concealed on/off switch)
(separate key switches suggested)

Finish

- Custom Powder Coat (RAL) _____
- Plated finish _____

Screw packs

- Through Bolt¹ Wood and Machine Screws (TBWMS)
- Torx Machine Screws (TORX)
- Through Bolt¹ and Torx Machine Screw (TBTRX)

Special template

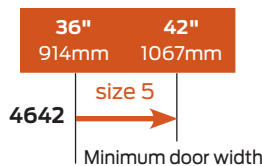
- ST- _____

1. Specify door thickness if other than 1 3/4".

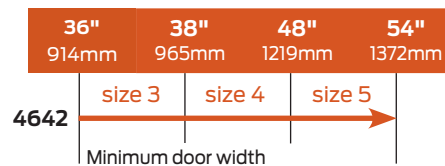
Table of sizes

- Non-sized 4640 series cylinder is adjustable from size 2 through size 5 and is shipped set to size 3
- Closing power of 4640 Series closers may be increased 50%

Exterior (and vestibule) door width



Interior door width



➔ Indicates recommended range of door width for operator.
Note: Minimum door width 36" (914mm).