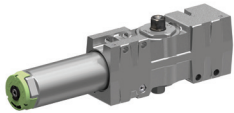
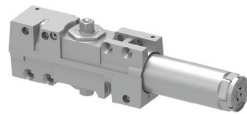


## Accessories

### Cylinders

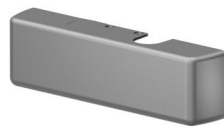


- 4040XP-3071  
Cast iron cylinder  
assembly (CYL)**
- Non-handed
  - Heavy duty

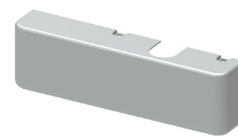


- 4041-3071 DEL  
Delay Action Cylinder  
(CYLDEL)**
- Used for delayed action closing
  - Non-handed
  - Heavy duty

### Covers



- 4040XP-72  
Plastic Cover (PC)**
- Non-handed
  - Includes 4040XP-54 snap-on cover clip



- 4040XP-72MC  
Metal Cover (MC)**
- Handed
  - Required for plated finishes and custom powder coat finishes
  - Optional

### Arms



- 4040XP-3077  
Regular Arm (REGARM)**
- Non-handed
  - Mounts pull side or top jamb with shallow reveal P4041 closer includes PA shoe, 4040XP-62PA required for parallel arm mounting



- 4040XP-3077L  
Long Arm (LONG)**
- Non-handed
  - Includes long rod and shoe, 4040XP-79LR for top jamb mount
  - Optional



- 4040XP-3077ELR  
Extra Long Arm (XLONG)**
- Non-handed
  - Includes extra long rod and shoe, 4040XP-79ELR for top jamb mount with deep reveal
  - Optional



- 4040XP-3049  
Hold Open Arm (H)**
- Non-handed
  - Mounts pull side or top jamb with shallow reveal, hold open adjustable shoe
  - 4040XP closer includes 4040XP-62PA shoe required for parallel arm mounting
  - Optional



- 4040XP-3049L  
Hold Open Long Arm (HLONG)**
- Non-handed
  - Includes long head and tube, 4040XP-3048L for top jamb mount
  - Optional



- 4040XP-3077EDA  
Extra Duty Arm (EDA)**
- Non-handed
  - Features forged, solid steel main and forearm for potentially abusive installations
  - Optional



- 4040XP-3049EDA  
Hold Open Extra Duty Arm (HEDA)**
- Handed
  - Parallel arm features forged, solid steel main and forearm for potentially abusive installations
  - Hold open function is adjusted at the shoe
  - Optional



- 4040XP-3077EDA/62G  
Extra Duty Arm with 62G Thick  
Hub Shoe (EDAW62G)**
- Non-handed
  - Features forged, solid steel main and forearm for potentially abusive installations
  - 62G shoe provides additional blade stop clearance
  - Optional



- 4040XP-3049EDA/62G  
Hold Open Extra Duty arm with 62G  
Thick Hub Shoe (HEDA62G)**
- Handed
  - Features forged, solid steel main and forearm for potentially abusive installations
  - 62G shoe provides additional blade stop clearance; hold open function is adjusted at the shoe
  - Optional



- 4040XP-3077CNS  
Cush-n-Stop Arm (CUSH)**
- Non-handed
  - Features solid forged steel main arm and forearm with stop in soffit shoe.
  - Optional



- 4040XP-3049CNS  
Hold Open Cush-n-Stop Arm  
(HCUSH)**
- Non-handed
  - Hold open function with templated stop/hold open points
  - Handle controls hold open function
  - Optional