

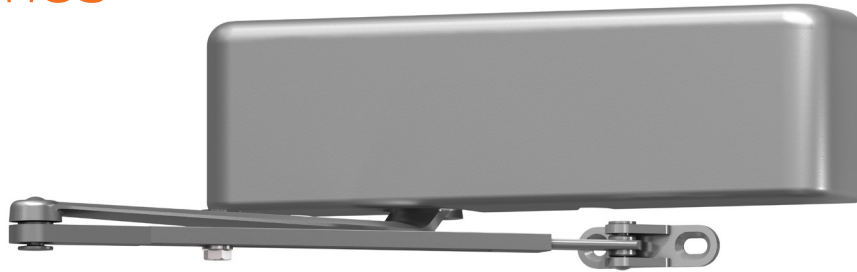
LCN®

4000 Series

Surface mounted closers



4020 Series



The 4020 is a heavy duty closer with adjustable spring power using the LCN Green Dial. This creates a custom fit to meet the specific demands of high traffic use and brings reliable performance.

Features

Certifications	Grade 1 - ANSI A156.4, UL 10C, ADA, 100 hour salt spray, meets BAA - Buy American Act	Cover	<ul style="list-style-type: none"> Plastic Cover (PC), standard Metal Cover (MC), optional
Body construction	<ul style="list-style-type: none"> Cast iron body Full complement bearing 1 1/2" diameter piston 1 1/16" diameter double heat treated pinion journal 	Fasteners	Self Reaming and Tapping Screws (SRT)
Fluid	All weather fluid	Mounting	Top jamb (Pull side)
Handing	Handed	Arms	Regular arm
Templating	Peel-n-Stick templates - 2 1/2" x 6" mounting hole pattern	Finishes/colors/ powder coat	<ul style="list-style-type: none"> 689 Aluminum 690 Statuary bronze 691 Light bronze 693 Black 695 Dark bronze 696 Brass Custom colors optional
Size	Adjustable 1-5 or sized 6		<ul style="list-style-type: none"> Optional SRI primer - powder coat only Optional plated finishes
Warranty	30 years		

Special templates | Customized installation templates or products may be available to solve non-standard applications. Contact LCN Product Support for assistance.

Mounting	Finish	Cover	Cylinder	Arm function*
Hinge (pull) side Top jamb (pull) Top jamb (push) Parallel arm Stop face	Powder coat Plated Plastic Metal	Non-handed Non-sized Accessibility Delay Action*** CYLAVB**	180° 140° 140°	Regular (double) Standard (single) Hold Open Fusible Link EDA/HEDA CUSH/HCLUSH SCUSH/SHCLUSH Double Egress
■ Available ■ Not available	■ Available ■ Not available	■ Available ■ Not available ♿ Closer available with less than 5.0 lbs. opening force on 36" door.	■ Available ■ Not available	■ Available ■ Not available

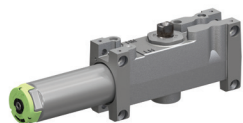
* Maximum opening/hold open point with standard template.
 ** Advanced Variable Back Check.
 *** Delay action for 4040XP incorporates standard 4041 cylinder.

Introduction
 Product selection guide
 4010/4010T Series
 4020/4020T Series
 4030/4030T Series
 4040XP/4040XPT Series
 4050A/4050AT Series
 4110/4110T Series
 4000T Series

4020/4020T Series

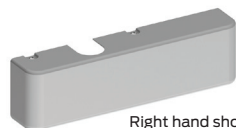
Accessories

Cylinders



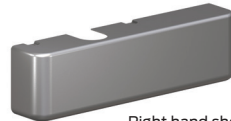
- 4021(6)-3071
Cast iron cylinder assembly (CYL)**
- Handed
 - Standard

Covers



Right hand shown

- 4020-72
Plastic Cover (PC)**
- Handed
 - Standard



Right hand shown

- 4020-72MC
Metal Cover (MC)**
- Handed
 - Required for plated finishes and custom powder coat finishes
 - Optional

Arms



- 4020-3077
Regular Arm (REGARM)**
- Non-handed



- 4020-3077L
Long Arm (LONG)**
- Non-handed
 - Includes 4020-79LR for deep reveals
 - Optional



- 4020-3049
Hold Open Arm (H)**
- Handed
 - Provides hold open function, adjustable at elbow
 - 5 3/4" (146 mm) maximum reveal, 140° hold open
 - Optional



- 4020-3049FL
Fusible Link Arm (FL)**
- Handed
 - Releases hold open function, adjustable at shoe, when exposed to temperatures above 165° F
 - 3 7/8" (98 mm) maximum reveal
 - Optional

Note: Check local codes before specifying FL arms. NOT A life safety product!

Installation accessories



- 4020-18
Plate**
- Required where head frame is less than 3 7/16" (87 mm)
 - Requires minimum 1 3/4" (44 mm) minimum head frame and 2" (51 mm) top rail 3 7/8" (98 mm) maximum reveal



- 4020-18G
Plate**
- For flush ceiling condition
 - Requires minimum 1 3/4" (44 mm) minimum head frame and 2 3/4" (70 mm) top rail

Ordering information

How-to-order 4020 Series closers

1. **Select cylinder size**
 - 4021 (adjustable from size 1 to 5)
 - 4026 (CYLDEL not available)
2. **Specify hand**
 - Right Hand (RH)
 - Left Hand (LH)
3. **Select finish**
 - Standard powder coat _____
 - Aluminum (689), Dark Bronze (695), Statuary Bronze (690), Light Bronze (691), Black (693), or Brass (696)

Closer will be shipped with:

- Standard cylinder
- Standard cover
- Regular arm
- Self reaming and tapping screws (unless options listed below are selected)

Closer options

Cylinder

- Delay Action Cylinder (CYLDEL)

Cover

- Metal Cover (MC)

Arm

- Hold Open Arm (H)
- Fusible Link Arm, 165°F (FL)

Finish

- Custom powder coat (RAL) _____ (handed metal cover required)
- Plated finish _____ (handed metal cover required)
- SRI primer (use with powder coat finishes only)

Screw pack

- Through Bolt¹ Self Reaming and Tapping Screws (TBSRT)
- Wood and Machine Screws (WMS)
- Through Bolt¹ Wood and Machine Screws (TBWMS)
- Torx Machine Screws (TORX)
- Through Bolt¹ and Torx Machine Screws (TBTRX)

Installation accessories

- Plate, 4020-18
- Plate, 4020-18G

Special template

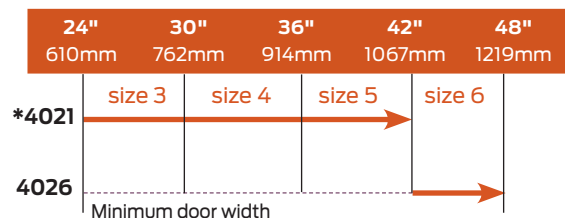
- ST- _____

1. Specify door thickness if other than 1 3/4".

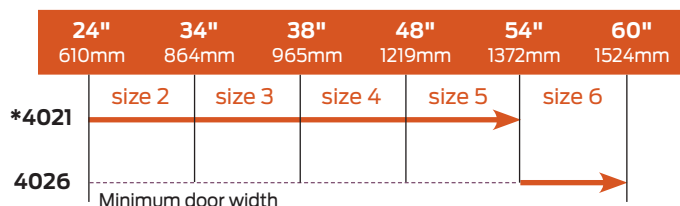
Table of sizes

- Select closer based on width of door
- The spring power of non-sized 4021 cylinder is adjustable from size 1 through size 5 and is shipped set to size 3
- Sized 4020 Series cylinders available in size 6
- Delay action not available with 4026 cylinder

Exterior (and vestibule) door width



Interior door width




➔ Indicates recommended range of door width for closer size.
* Adjustable Size 1 thru 5.

Reduced opening force 4020 Series closers

CAUTION! Any manual door closer, including those certified by BHMA to conform to ANSI Standard A156.4, that is selected, installed and adjusted based on ADA or other reduced opening force requirements may not provide sufficient power to reliably close and latch a door.

Refer to Automatic Operators catalog for information on systems that meet reduced opening force requirements without effecting closing power.

	Door width	36"	42"	48"
	8.5* lbs.	4021	4021	4021
	5.0* lbs.	4021	4021	4021

* Maximum opening force.

4020T Series



The 4020T is a cast iron, heavy duty closer designed for interior, high traffic conditions. This Grade 1 device comes in various finishes and colors to match your interior look.

Features

Certifications	Grade 1 - ANSI A156.4, UL 10C, ADA, 100 hour salt spray, meets BAA - Buy American Act	Cover	<ul style="list-style-type: none"> Plastic Cover (PC), standard Metal Cover (MC), optional
Body construction	<ul style="list-style-type: none"> Cast iron body Full complement bearing 1 1/2" diameter piston 1/16" diameter double heat treated pinion journal 	Fasteners	Self Reaming and Tapping Screws (SRT)
Fluid	All weather fluid	Mounting	Top jamb (Pull side)
Handing	Handed	Arms	Standard arm, track with roller
Templating	Peel-n-Stick templates - 2 1/2" x 6" mounting hole pattern	Finishes/colors/ powder coat	<ul style="list-style-type: none"> 689 Aluminum 690 Statuary bronze 691 Light bronze 693 Black 695 Dark bronze 696 Brass Custom colors optional
Size	Sized 1, 3 or 4		<ul style="list-style-type: none"> Optional SRI primer - powder coat only Optional plated finishes
Warranty	30 years		

Special templates

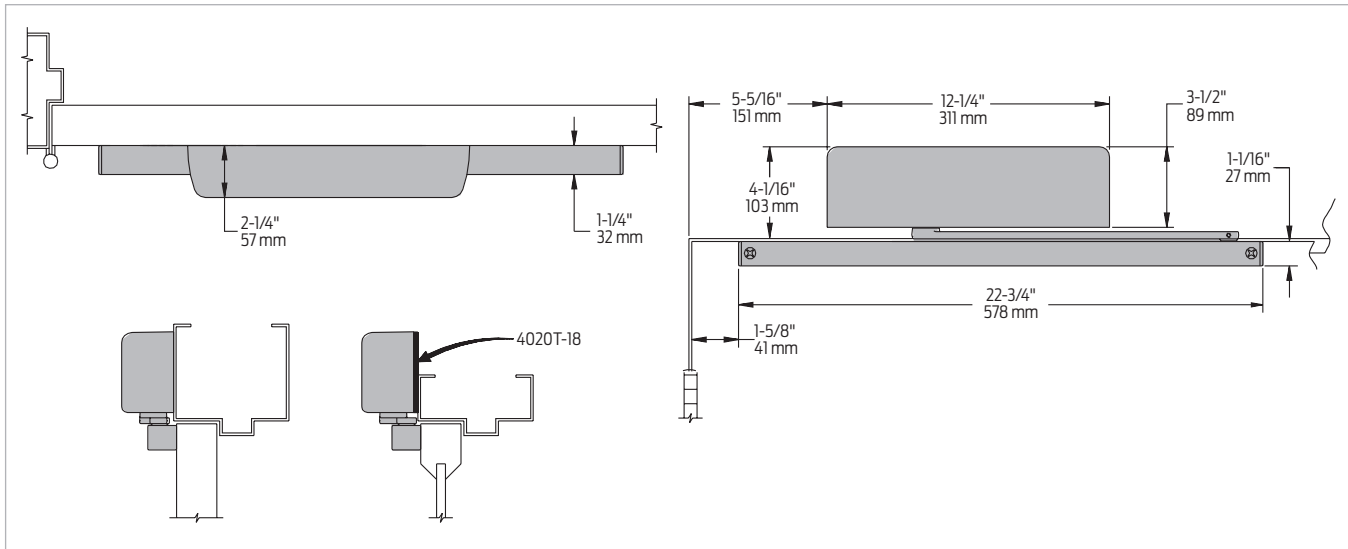
Customized installation templates or products may be available to solve non-standard applications. Contact LCN Product Support for assistance.

Mounting	Finish	Cover	Cylinder	Arm function*
<ul style="list-style-type: none"> Hinge (pull) side Top jamb (pull) Top jamb (push) Parallel arm Stop face 	<ul style="list-style-type: none"> Powder coat Plated Plastic Metal 	<ul style="list-style-type: none"> Non-handed Non-sized Accessibility Delay Action*** CYLAVB** 	<ul style="list-style-type: none"> Regular (double) Standard (single) Hold Open Fusible Link EDA/HEDA CUSH/HCUSH SCUSH/SHCUSH Double Egress 	<ul style="list-style-type: none"> 180° 100°
<ul style="list-style-type: none"> Available Not available 	<ul style="list-style-type: none"> ♿ Closer available with less than 5.0 lbs. opening force on 36" door. * Maximum opening/hold open point with standard template. ** Advanced Variable Back Check. *** Delay action for 4040XP incorporates standard 4041 cylinder. 			

Introduction
 Product selection guide
 4010/4010T Series
4020/4020T Series
 4030/4030T Series
 4040XP/4040XPT Series
 4050A/4050AT Series
 4110/4110T Series
 4000T Series

Mounting details

Top jamb (pull) side mounting

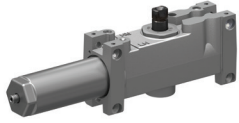


Butt hinges	Should not exceed 5" (127 mm) in width
Auxiliary stop	Recommended at hold open point or where a door cannot swing 180°
Reveal	Should not exceed 1/8" (3 mm)
Head frame	Less than 3 7/8" (98 mm), requires plate, 4020T-18. Plate requires 1 3/4" (44 mm) minimum.
Clearance	1 1/2" (38 mm) behind door required for 90° or 180° installation
Maximum opening	<ul style="list-style-type: none"> ▪ Templating allows 180° with standard track arm, limited to 100° with optional bumper installed ▪ Consult factory if door will be held open at 180° ▪ Variable hold open angles with infinite options

Note: Optional track bumper assembly assists back check in cushioning the opening swing of the door. It is not intended to replace an auxiliary stop.

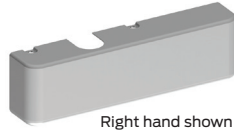
Accessories

Cylinders

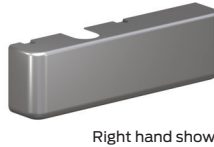


- 4021T(3)(4)-3071
Cast iron cylinder assembly (CYL)**
- Handed
 - Standard

Covers



- 4020T-72
Plastic Cover (PC)**
- Handed
 - Standard



- 4020T-72MC
Metal Cover (MC)**
- Handed
 - Required for plated finishes and custom powder coat finishes
 - Optional

Arms



- 4020T-3077T
Standard Arm (STDTRKARM)**
- Handed
 - Roller not included with arm

Tracks



- 4020T-3038
Standard Track (STDTRK)**
- Non-handed
 - Non hold open
 - Will accept hold open clip and/or bumper assembly
 - Standard



- 4020T-3038B
Track with Bumper (BUMP)**
- Non-handed
 - Non hold open
 - With bumper assembly installed
 - Will accept hold open clip
 - Optional



- 4020T-3038H
Hold Open Track (H)**
- Non-handed
 - With hold open clip installed
 - Will accept bumper assembly
 - Optional

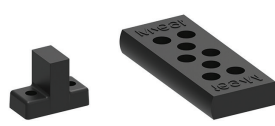


- 4020T-3038HB
Hold Open Track with Bumper (HBMP)**
- Non-handed
 - With hold open clip and bumper assembly installed
 - Optional

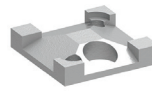
Installation accessories



- 4020T-18
Plate**
- Required where head frame is less than 3 7/8" (98 mm)
 - Requires minimum 1 3/4" (44 mm) frame face



- 4020T-169
Track bumper**
- Mounts in track to assist back check, does not replace auxiliary stop
 - Limits maximum opening
 - Consists of bumper, bumper post, and mounting screw



- 4020T-3054
Hold open clip**
- Mounts in track to provide hold open function
 - Hold open point controlled by clip location
 - Consists of clip and mounting screws
 - Requires 4020T-3034H Track Roller



- 4020T-3034
Track roller**
- Quiet, low friction roller assembly
 - Shoulder dimension "X" = 1/16" (2mm)



- 4020T-3034H
Track roller**
- Quiet, low friction roller assembly
 - Shoulder dimension "X" = 1/16" (2mm)
 - Spring-loaded hold-open mechanism

Introduction
Product selection guide
4010/4010T Series
4020/4020T Series
4030/4030T Series
4040XP/4040XPT Series
4050A/4050AT Series
4110/4110T Series
4000T Series

Ordering information

How-to-order 4020T Series closers

1. Select cylinder size

- 4021T (ADA)
- 4023T
- 4024T

2. Specify hand

- Right Hand (RH)
- Left Hand (LH)

3. Select finish

- Standard powder coat _____
Aluminum (689), Dark Bronze (695), Statuary Bronze (690), Light Bronze (691), Black (693), or Brass (696)

Closer will be shipped with:

- Standard cylinder
- Standard cover
- Standard arm
- Track roller
- Standard track
- Self-reaming and tapping screws (unless options listed below are selected)

Closer options

Cover

- Metal Cover (MC)

Track

- Track with Bumper (BUMP)
- Hold Open Track (H)
- Hold Open Track with Bumper (HBMP)

Finish

- Custom powder coat (RAL) _____
(handed metal cover required)
- Plated finish _____
(handed metal cover required)
- SRI primer (use with powder coat finishes only)

Screw pack

- Through Bolt¹ and Self Reaming and Tapping Screws (TBSRT)
- Wood and Machine Screws (WMS)
- Through Bolt¹ Wood and Machine Screws (TBWMS)
- Torx Machine Screws (TORX)
- Through Bolt¹ and Torx Machine Screws (TBTRX)

Installation accessories

- Plate, 4010T-18

Special template

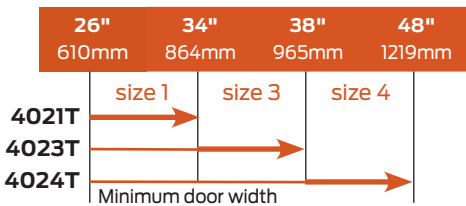
- ST- _____

1. Specify door thickness if other than 1 3/4".

Table of sizes

- Select closer based on width of door
- Sized 4020T Series cylinders available in size 1, 3 or 4
- Specify next higher size closer where strong drafts exist

Interior door width



➔ Indicates recommended range of door width for closer size.