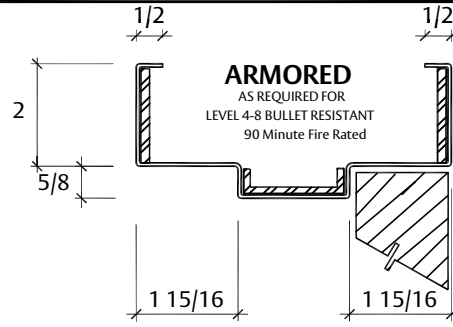
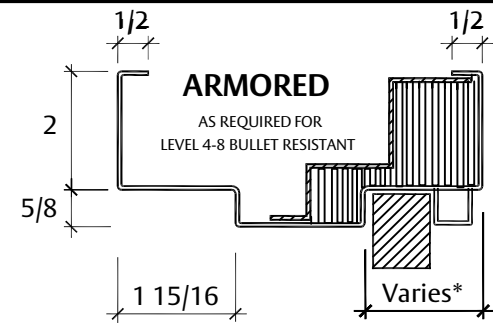


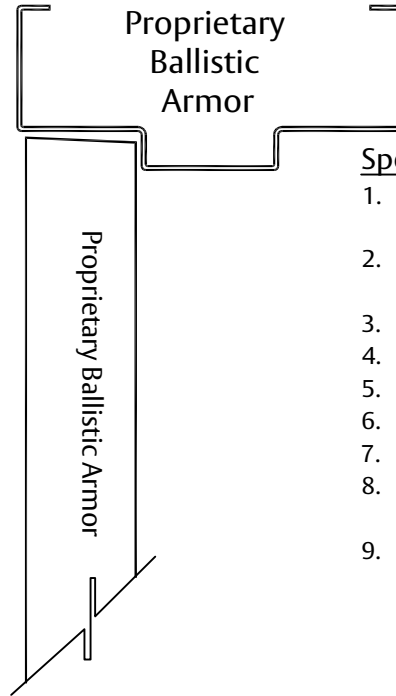
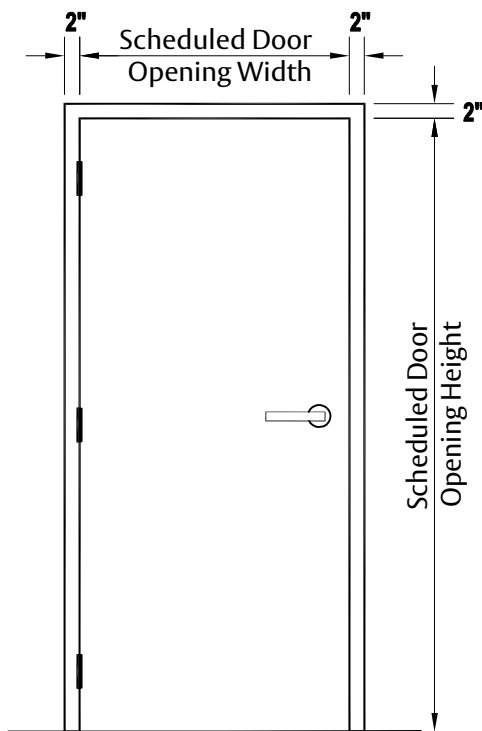
BULLET LEVEL 4-8 FRAME PROFILE



BULLET LEVEL 4-8 FRAME PROFILE (FIRE RATED)



BULLET LEVEL 4-8 LITE PROFILE

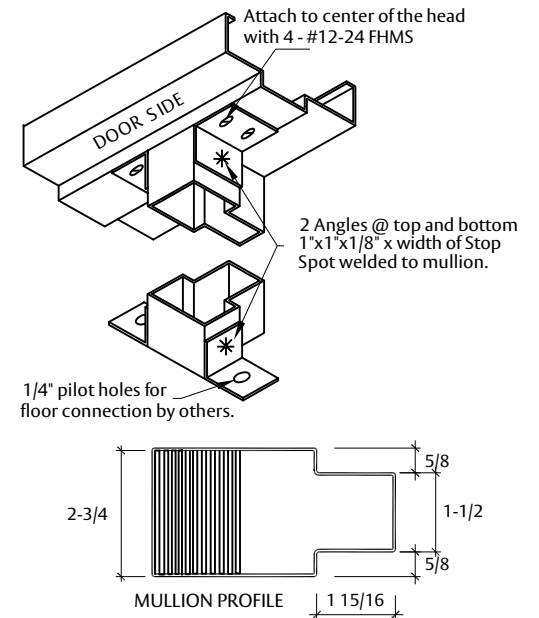


Specifications:

1. All exposed surfaces of door and frame to receive one coat of rust inhibitive prime paint.
2. Assembly is equipped with hollow metal door, frame, and created for shipment.
3. Nominal door thickness is 1 3/4".
4. Door weight is 26.75 pounds per square foot.
5. Doors are 14 gauge steel face sheets.
6. Frames are 14 gauge steel.
7. Special frame profile and anchor types are required.
8. Door edges are to be continuously welded and finished smooth.
9. Visions available up to full glass. Vision kits vary between Levels 4-8.
 - 9.1. minimum top rail 8.5"
 - 9.2. minimum bottom rail 12"
 - 9.3. minimum hinge and lock stile 8.5"
10. Available in conjunction with sound, stainless steel, blast, and lead lined options.
11. Available up to 90 minutes fire rating for flush assemblies only.

Recommended Hardware preparation

Lock = Mortise lock with ANSI 4 7/8" strike.
Hinge = Stainless Steel FM3500 Continuous Hinge or Pivot Hinge.
Heavy duty door closer's recommended.
For additional hardware consult with manufacturer.

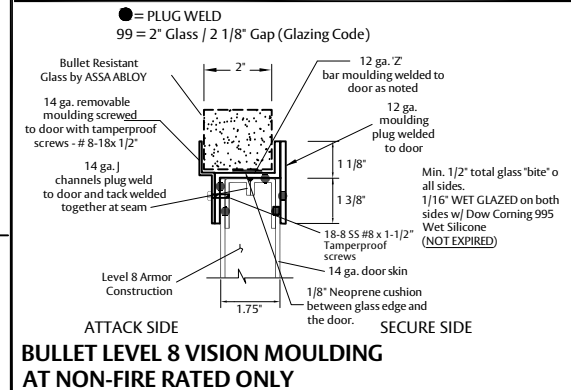


BULLET LEVEL 4-8 REMOVABLE CENTER MULLION

Tech Data

Experience a safer and more open world

Rating	Ammunition	Grain	(G)	Velocity (FPS)	Velocity (MPS)	No. of Shots
UL Level 4	.30 Caliber Rifle Lead Core Soft Point	180	11.70	2540	774	1
UL Level 5	7.62mm Rifle Lead Core FMJ Military Ball	150	9.70	2750	838	1
UL Level 6	9mm FMJ with Lead Core	124	8	1400	427	5
UL Level 7	5.56 Rifle Lead Core FMJ	55	3.56	3080	939	5
UL Level 8	7.62mm Rifle Lead Core FMJ Military Ball	150	9.70	2750	838	5



BULLET LEVEL 8 VISION MOULDING AT NON-FIRE RATED ONLY