



425HD

Heavy Duty Threshold

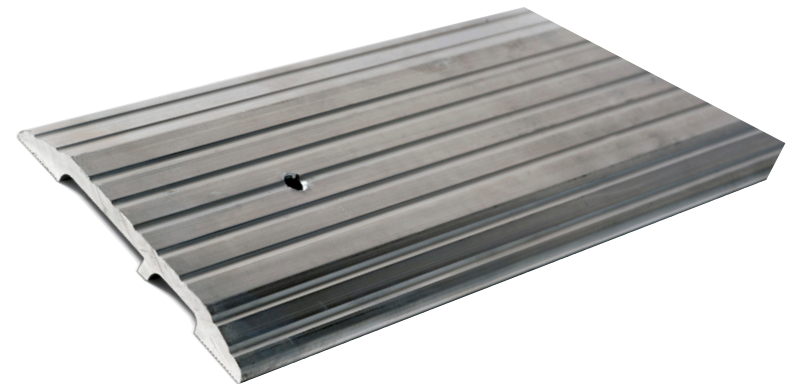
PRODUCT CUT SHEET

| |
|---------------|
| PROJECT: |
| SUBMITTED BY: |
| DATE: |
| NOTES: |

Material and Features

Aluminum Alloy 6063, T5 Temper

- ▶ 5" Wide x 1/2" Tall
- ▶ Fluted Top
- ▶ BHMA Certified to ANSI A156.21 Heavy Duty 10,000 lb. Load Test
- ▶ Recommended for Delivery/Storage Doorways Where Heavier Loads Travel
- ▶ For Use Where Forklift or Vehicular Traffic Occurs
- ▶ Typical Wall Thickness: .244"
- ▶ Weight: 1.6 Lbs./Ft.
- ▶ #10 x 1 1/2" FH Zinc Plated Wood Screws Included. Dark Bronze Supplied With DKB Thresholds



Finishes

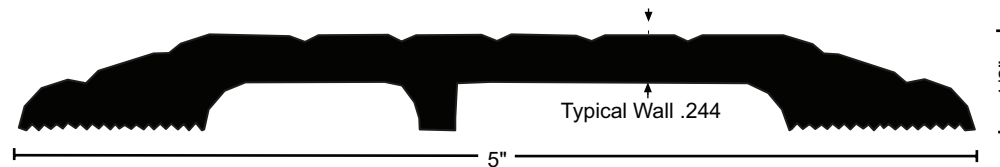
Mill Finish

DKB - Dark Bronze Finish

Options



Optional Slip Resistant
SIA Finish



NGP-THR-425HD-PCS-0722-A