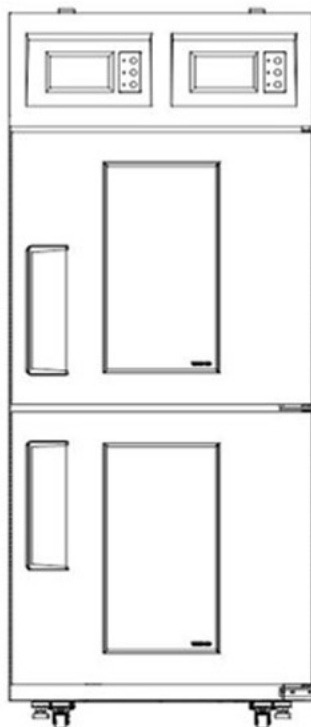




# DOUGH Retarder - Proofer Installation and Operation Manual

Please read this manual completely before attempting to install or operate this equipment.



**MODEL :**  
**TDC - 30D - 2R**

**WARNING :** This product can expose you to chemicals including Bisphenol A(BPA) and Di(2-ethylhexyl)phthalate(DEHP) and Cobalt sulfate heptahydrate, which are known to the State of California to cause cancer and birth defects or other reproductive harm. For more information go to [www.P65Warnings.ca.gov](http://www.P65Warnings.ca.gov)

**AVERTISSEMENT :**  
Cancer ET Troubles de l'appareil reproducteur - [www.P65Warnings.ca.gov](http://www.P65Warnings.ca.gov)

## CONTENT

	Page
NOTICE .....	3
FOR HYDROCARBON REFRIGERATION UNITS .....	4
IMPORTANT SAFETY INFORMATION .....	6
- SAFETY PRECAUTIONS .....	6
- INSTALLATION & USAGE .....	7
- CAUTION .....	7
- PROPER DISPOSAL OF OLD APPLIANCE .....	9
- BEFORE YOU CALL FOR SERVICE .....	9
SPECIFICATIONS .....	10
SERIAL NUMBER .....	10
INSTALLATION GUIDELINES .....	11
CLEANING .....	13
OPERATION METHOD .....	16
TROUBLESHOOTING .....	26
WARRANTY INFORMATION .....	27
WARRANTY REGISTRATION & CLAIM INSTRUCTION .....	31

## NOTICE

- This equipment is not intended for use by persons (including children) with reduced physical, sensory or mental capabilities, or lack of experience and knowledge unless they have been given supervision or instructions concerning the use of this equipment and the hazards involved by a person responsible for their safety.
- The special instructions for those persons (including children) with reduced physical, sensory or mental capabilities, or lack of experience and knowledge, are not included in this manual and are not required to be included.
- Children shall not play with the appliance.
- Cleaning and user maintenance shall not be made by children without supervision.

This manual uses the following safety symbols. These safety symbols with the words of **DANGER**, **WARNING** or **CAUTION** alert users of the potential hazards that could cause injury or even death.



Indicates hazards of death or serious injury, if the instructions are not followed.



Indicates dangers of death or serious injury, if the instructions are not followed.









Indicates risks of personal injury or material damage, if the instructions are not followed.

## FOR HYDROCARBON REFRIGERATION UNITS

### **WARNING**

This unit uses R-290 (propane), or R-600a (isobutane) as a refrigerant. These hydrocarbon refrigerants are highly environmentally compatible but also are flammable and combustible. Please read this manual thoroughly before installing and operating the unit. Please take cautious measures to avoid risk of fire or explosion.

**PLEASE REFER TO THE LABEL INSIDE THE CABINET TO CHECK REFRIGERATION TYPE AND VOLUME.**

	<b>DANGER</b> - Risk of fire or explosion. Flammable refrigerant used. Do not use mechanical devices to defrost refrigerator. Do not puncture refrigerant tubing.
	<b>DANGER</b> - Risk of fire or explosion. Flammable refrigerant used. To be repaired only by trained service personnel. Do not puncture refrigerant tubing.
	<b>CAUTION</b> - Risk of fire or explosion. Dispose of properly in accordance with federal or local regulations. Flammable refrigerant used.
	<b>CAUTION</b> - Risk of fire or explosion. Flammable refrigerant used. Consult repair manual/owner's guide before attempting to service this product. All safety precautions must be followed
	<b>CAUTION</b> - Risk of fire or explosion due to puncture of refrigerant tubing; follow handling instructions carefully. Flammable refrigerant used.
	<b>WARNING</b> <ul style="list-style-type: none"> <li>- Keep ventilation openings, in the appliance enclosure or in the built-in structure, clear of obstruction.</li> <li>- Do not use mechanical devices or other means to accelerate the defrosting process, other than those recommended by the manufacturer.</li> <li>- Do not damage the refrigerant circuit.</li> <li>- Do not use electrical appliances inside the food storage compartments of the appliance unless they are of a type recommended by the manufacturer.</li> </ul>

## FOR HYDROCARBON REFRIGERATION UNITS

### WARNING

- Handle the unit with care in order to avoid any serious damage to the refrigeration system.
- The refrigerant tubing, condenser, and evaporator coils are easily prone to damage while handling, moving, installing, and cleaning the unit, which may lead to fire or even explosion.
- Refrigerant squirting out of the pipes could ignite or cause an eye injury. If a leak is detected, avoid any naked flames or potential sources of ignition and air the room in which the appliance is standing for several minutes.
- In order to avoid the creation of a flammable gas-air mixture in case of a leak in the refrigerating circuit, the size of the room in which the appliance is placed depends on the amount of refrigerant used. The room must be 35.31  $ft^3$  (1  $m^3$ ) in size for every 0.28oz (8g) of R-600a refrigerant inside the appliance. The amount of refrigerant in your particular appliance is shown on the label inside the cabinet.



This appliance contains a small amount of propane (R-290) or isobutane (R-600a) refrigerant, a natural gas with high environmental compatibility, but it is also combustible. When transporting and installing the appliance, care should be taken to ensure that no part of the refrigerating circuit is damaged.

- Never start up an appliance showing any signs of damage. If in doubt, contact a qualified service professional.
- In case of any hazardous activities such as fire or explosion, move the unit away from any source of ignition to a well ventilated area.
- Further service and repair must be done by a qualified technician who is familiar with the safety standards, and also has thorough understanding and knowledge of the flammable refrigerants.
- Any and all technicians handling these units must be equipped with proper personal protection and equipment and follow applicable safety measures and precautions to avoid risk of fire or explosion.

## IMPORTANT SAFETY INFORMATION

### **SAFETY PRECAUTIONS**

To avoid any risk of fire, explosion, electric shock, personal injury, material damage or incorrect use of the appliance, be sure to observe the following safety precautions. (After reading these owner's manual instructions, please keep the manual booklet in a safe place for reference. Remember to hand it over to any subsequent owners)

### **WARNING**

- The unit must be installed and located in accordance with the manufacturer's installation instructions.
- Installation work must be performed in accordance with the National Electric Code by qualified and authorized personnel only.
- Repairs and replacement work must be performed by a qualified and authorized service professional only using genuine replacement parts. (Component parts shall be replaced with like components.)
- Do not use an extension cord or an adapter plug. Because of the potential safety hazards under certain conditions, we strongly recommend against any use of an extension cord or an adapter plug.
- Do not, under any circumstances, cut or remove the ground prong from the power cord. For personal safety, this appliance must be properly grounded.
- Do not store volatile and flammable substances in the refrigerator. The storage of benzene, thinner, alcohol, ether, LP gas, or other explosive substances may cause an explosion.
- Do not store or use gasoline or other flammable vapors and liquids in the vicinity of this appliance as well as any other appliances.
- The appliance is not intended for use by children without supervision.
- Do not allow children to climb, stand, or hang on the refrigerator doors or shelves in the refrigerators. They could damage the refrigerator and seriously injure themselves.
- To prevent suffocation and entrapment hazards to children, remove the doors and seals from the refrigerator before disposing of it or discontinuing its use.

## IMPORTANT SAFETY INFORMATION

### INSTALLATION & USAGE

#### **WARNING**

- Do not install the unit in a damp place where it could be splashed with water. Incorrect insulation of the electrical parts may cause fire or electric shock.
- Do not plug several appliances into the same sockets. This could cause overheating and risk start of a fire.
- Keep the power plug away from the rear of the cabinet. A damaged power plug may cause fire due to overheating.
- Do not spray water directly to the interior or exterior of the appliance. There is a risk of fire or electric shock.
- Do not place any containers filled with water on top of the appliance. If the water spills onto any electrical parts, it may lead to fire or electric shock.
- Do not attempt to repair, disassemble or alter the appliance. It may cause fire or abnormal operations which may lead to injury.
- Unplug the refrigerator before making repairs, replacing a light bulb, or cleaning.
- Plug into a grounded 3-prong outlet. Do not remove the ground prong.



#### **CAUTION**

- Do not disconnect the power cord by pulling on it. This may disconnect a wire and cause a short circuit.
- This unit has two power supply cords. Unplug both cords before moving or servicing this appliance.
- This product has two power supply cords.
  - Risk of Electric Shock -
- This equipment has two power supply cords.
- Unplug all cords before moving or servicing this equipment.

## IMPORTANT SAFETY INFORMATION

### INSTALLATION & USAGE

#### CAUTION

- There is a risk of death from suffocation if a child puts the packing materials on his or her head.
- Do not store any articles on top of the appliance. Articles may fall while opening or closing the door, and could cause personal injury or material damage.
- Do not store pharmaceutical products, scientific materials or other temperature-sensitive products in the refrigerator. Products that require strict temperature controls must not be stored in the refrigerator.
- Do not let children hang on the door.
- Do not touch any cold surfaces or food containers in the freezer with damp or wet hands. Skin may stick to these extremely cold surfaces and may cause frostbite.
- Remove any foreign matter from the power plug pins. Otherwise, there is a risk of fire.
- Do not insert your hand into the bottom area of appliance. Any sharp edges may cause personal injury.
- After unplugging the appliance, wait at least five minutes before plugging it back in. Abnormal operation of the freezer may cause material damage.
- If the appliance is not used for a long period of time, unplug it from the power supply. Any deterioration in the insulation may cause fire.
- Do not let children touch or play with the control panel on the front of the appliance.
  - Do not allow children to play with this appliance.
  - Do not stand or lean on the base panel, pull-out parts, or doors.
  - Repairs and maintenance of the appliance should only be performed by a qualified technician. Incorrect repairs done by an unqualified person may be a potential source of danger that could have critical consequences for the user of the appliance.
  - Never put ice cubes or ice pops straight from the freezer into your mouth. The low temperature may cause cold burns.



## IMPORTANT SAFETY INFORMATION

### **PROPER DISPOSAL OF OLD APPLIANCE**

For environmental purposes, refrigeration appliances must be disposed of properly. This applies to your old appliance, and at the end of its service life, for your new appliance as well.

#### **WARNING**

Before disposing of old appliances, make them inoperable. Remove plug from mains, sever the power cable, and remove or destroy any snap or latch closures.

This eliminates the danger of any children locking themselves into the appliance (danger of suffocation) or placing themselves into other life-threatening situations.

- The appliance may not be disposed of with domestic waste or bulky refuse.
- The refrigerant circuit, especially the heat exchanger at the back of the appliance, may not be damaged.
- Information concerning collection schedules or locations can be obtained from the local disposal authorities.

#### **CAUTION**

The refrigeration used in refrigerator/freezer and the gases in the insulation material require special disposal procedures. Ensure that none of the pipes on the back of the appliance are damaged prior to disposal.

### **BEFORE YOU CALL FOR SERVICE**

Before contacting our Service Department, review the detailed troubleshooting tips in the Owner's manual.

1. Try to remedy the problem. Please read the "Troubleshooting Guide" section first and you may not need to call for service.
2. Restart the appliance to check whether the fault repeats. If the malfunction persists, switch off the appliance and try again after an hour.
3. If the malfunction still persists, then contact our Customer Service, specifying:
  - The nature of the problem,
  - The appliance model number and serial number
  - Your full address, telephone number and area code.

## SPECIFICATIONS

**RATED VOLTAGE : (110 - 120) V ~**

**REFRIGERANT TYPE : R-290**

**CHARGE : 2.82 oz (80 g)**

**RATED FREQUENCY : 60 Hz**

**RATED LAMP INPUT : 2.28 W**

**TOTAL RATED INPUT :**

COOLING : 13.5 A / 1 290 W

THAWING : 13.0 A / 1 335 W (COMP ON)

9.5 A / 1 045 W (HEATER ON)

FERMENTATION : 12.5 A / 1 305 W (COMP ON)

8.5 A / 1 015 W (HEATER ON)

DEFROSTING : 5.1 A / 610 W

**UPPER / LOWER COMPARTMENT RATED INPUT :**

COOLING : 6.3 A / 660 W

THAWING : 6.3 A / 650 W (COMP ON)

4.8 A / 580 W (HEATER ON)

FERMENTATION : 6.3 A / 650 W (COMP ON)

4.3 A / 510 W (HEATER ON)

DEFROSTING : 2.6 A / 310 W

## SERIAL NUMBER

The serial number is located on the rating label which is on interior left side wall. Please retain the unit's serial number for service purposes.

## NOTICE TO CUSTOMER

Loss or spoilage of products in your refrigerator/freezer is not covered by warranty. In addition to following recommended installation procedures, you must run the refrigerator/ freezer 24 hours prior to usage.



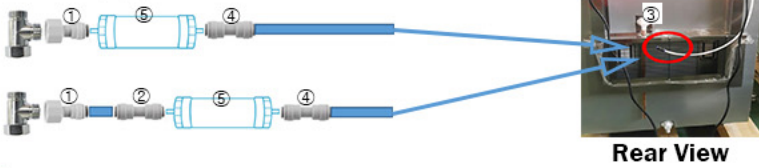
## INSTALLATION

- 1. LOCATION** - Allow adequate space and install the refrigerator on a firm and level floor. If the appliance is not level, there may be unusual noises and poor cooling performance.
- 2. GOOD AIR CIRCULATION** - Be sure to avoid any partition and object which may stop the air flow and that air space is allowed to flow to the rear and/or sides of the unit between the refrigerator and the back wall. Insufficient space causes vibration noise, inefficient refrigeration, damage to the refrigeration system, and the waste of electricity. (Turbo Air recommends that the rear of the unit should be no less than 5 inches from the wall)
- 3. PLACE ON STRONG FLOOR** - Be sure that the floor on which the unit is to be installed is strong enough to support the total weight of the cabinet and any other contents, before starting the installation.
- 4. DO NOT PLACE NEAR HEAT** - Be sure to avoid hot corners and other locations such as near stoves. High ambient temperature will result in much lower cooling efficiency.
- 5. INDOOR USAGE ONLY** - Be sure to install this unit indoors only, to prevent getting wet from the rain. Do not install the refrigerator in locations where the temperature is over 110°F (43°C) or below 50°F (10°C).
- 6. STABILIZING** - Make sure the unit is installed in a stable condition with the front wheels locked while in use.
- 7. LEVELING** - Be sure that the unit levels from the front to the back and side to side.
- 8. UNIT SHOULD BE ON DEDICATED OUTLET** - Plug the refrigerator into a wall socket exclusively for this appliance. Do not run on extension cord.
- 9. THE ELECTRICAL PLUG MUST BE ACCESSIBLE WITHOUT MOVING THE UNIT.**

# INSTALLATION GUIDE

## Water Supply, Drainage and Guide Bun-Pan installation guide.

### 1. Water Supply Installaion Guide



#### Main Parts



### 2. Drainage Installation Guide

This product is easy to install by preparing materials with a pipe size of 1/2" when installing a drain.

#### Main Parts



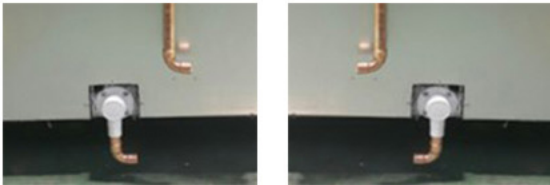
1/2" Elbow - 2EA



1/2" Length 1.8" - 1EA

#### Installation Guide

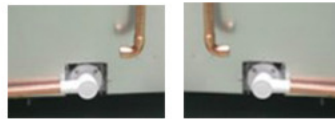
1) Example of installation only as a supply component



2) In case the drainage system is inconvenient due to the low height of the lower room.



After disassembling, it can be assembled by rotating the degree of freedom 90 degrees. Be sure to apply silicone before assembling the screw.



### 3. Guide Bun-Pan Installation Guide



Fit into the front groove.



Fit it to the rear groove.



Pull it all the way to the front.

## CLEANING

Before cleaning, unplug the unit and disconnect the power.  
Wipe and clean the inside and outside of appliance with a damp cloth.

### 1. CLEANING THE INTERIOR AND EXTERIOR

- The interior and exterior of the unit can be cleaned using warm water with soap
- Do not use an abrasive cleaner because it will scratch the surface.

### 2. CLEANING THE CONDENSER COIL

- To maintain proper refrigeration performance, the Condenser coil must be free of dust, dirt, and grease. This will require periodic cleaning. Condenser coil should be cleaned at least every three months (90 days ) or as needed.
- To clean the condenser, unplug the power cord. Condenser can be cleaned with vacuum, brush, or CO2 (high pressure air).

**NOTE :** For a self-cleaning condenser equipped model, condenser cleaning is not required.  
However, it is recommended to blow the condenser coil out with Nitrogen once or twice a year. Note that the condenser cleaner may not remove grease.

### 3. CLEAN THE DRAIN PAN

- Periodically, empty the drain pan which is located under the unit.
- When reinstalling the Drain Pan, make sure the drain hose is placed back into the pan.

### 4. CHECK AFTER CLEANING

- 1) Check the unit again for safety.
- 2) Plug unit back in and turn on power switch.
- 3) Check that the unit is operating properly.

### 5. DECOMPOSITION FOR CLEANING

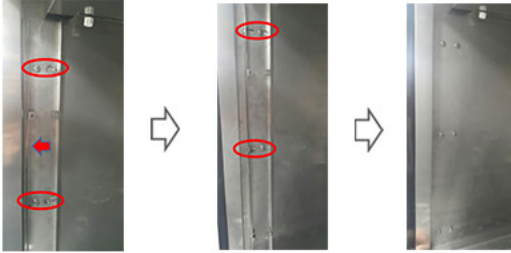
5-1 Decomposition method for internal cleaning.

- 1) Unscrew each of the three Special Bolts of the four Fixture Pan and pull the Fixture Pan forward to remove it.



## CLEANING

2) Pull the four Fixture Pan forward to separate it.



3) Unscrew the two Special Bolts on the upper front.



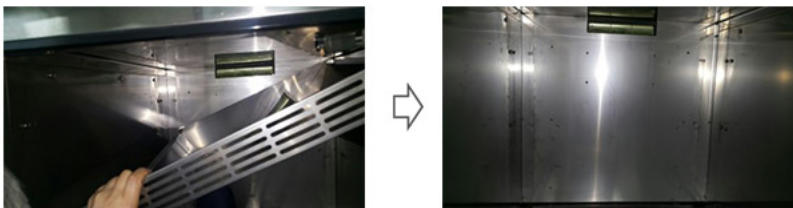
4) Lift the backside.



5) Pull the Guide Panel Bracket forward.

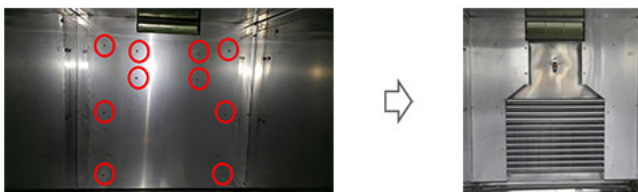


6) Separate the Guide Panel.



### 5-2 Disassembly Method for Humidity Hot Air Balloon and Cooler Coil Clinic.

1) Remove the panel by loosening the 10 screws with a cross screwdriver.

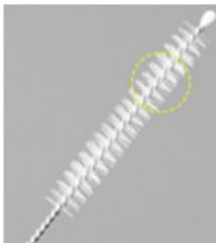
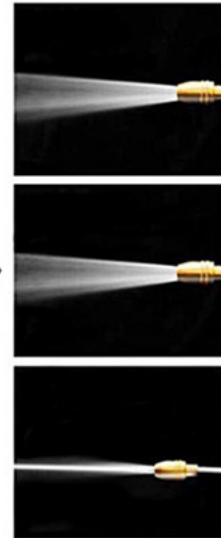
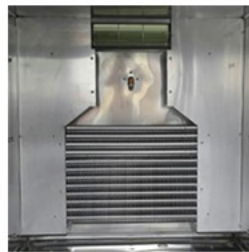


# CLEANING

## 5-3 Cleaning Method



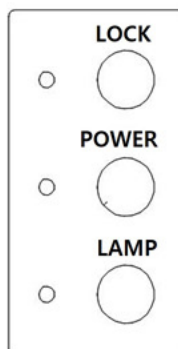
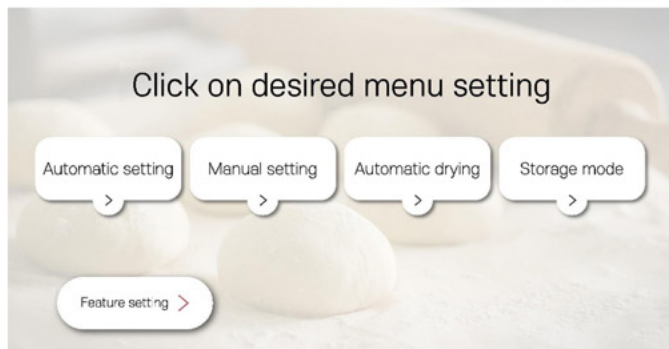
Detergent Discharge Container



- 1) Buy a water sprayer that controls water pressure on the market and spray it directly on the coil to remove foreign substances.
- 2) If you cannot remove foreign substances by spraying water, remove foreign substances with a cleaning brush.
- 3) Be sure to use a harmless detergent.

# OPERATION METHOD

Current Time 2019 . 01 . 26 13:56



**LOCK** : Disables the screen even when touched

**POWER** : Product ON/OFF

**LAMP** : Internal lamp ON/OFF

## 1. Automatic setting :

- The whole process is automatically completed on desired date and time
- When the whole process is completed in the order of “ Freeze → Thaw → Low temperature fermentation → High temperature fermentation ”, the [Time Over] alarm will be active for 30 minutes. If there is no [Stop], the “ Low temperature fermentation” mode will be on automatically after 30 minutes

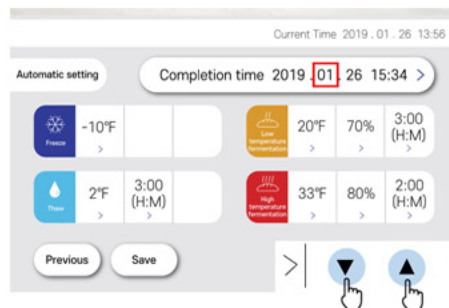
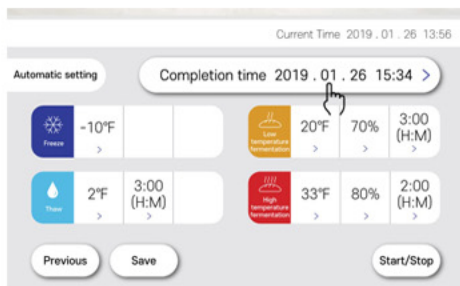
### 1) Setting Range

MODE	Temperature	Humidity
Freeze	5~32°F	—
Thaw	32~73 °F	—
Low temperature fermentation	59~104 °F	0~100 %
High temperature fermentation	59~104 °F	0~100 %

### 2) Setting Method

Touch “Time, Temperature, Humidity” in the applicable area at [Completion time], [Freeze], [Thaw], [Low temperature fermentation], and [High temperature fermentation].

The completion time shall be longer than the sum of the processing time.

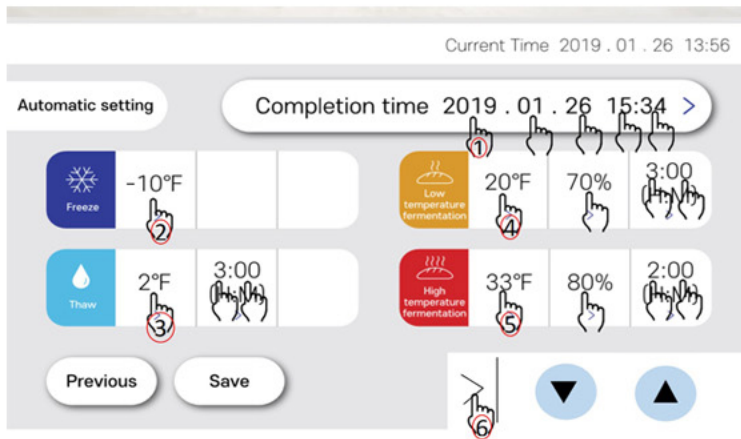


- The completion time shall be longer than the sum of the processing time.
- The freezing time is maintained with the remaining time after subtracting the times for [Thaw], [Low temperature fermentation], and [High temperature fermentation] at the mode setting at the completion setting.



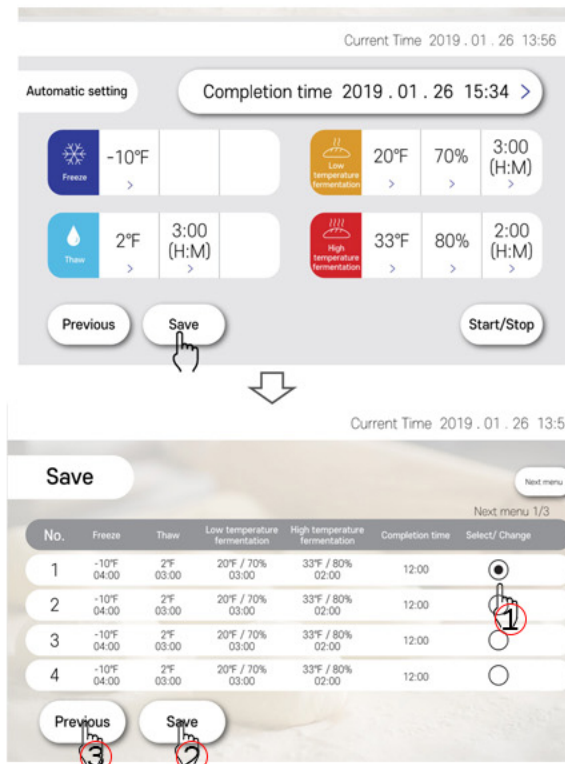
# OPERATION METHOD

## 3) Setting Order



⏏ : You may change the setting at this section.  
 The default setting order is ①=>②=>③=>④=>⑤, but you can start from anywhere you When all settings are complete, click on 6, ⏏ and the [Start/Stop] image will appear for operation.

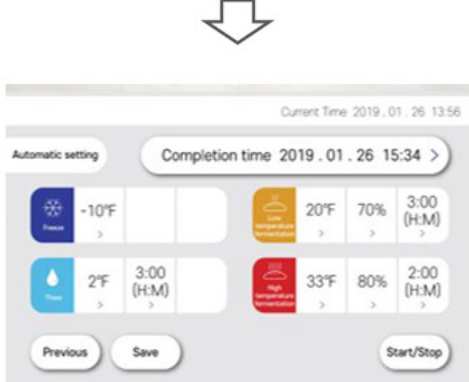
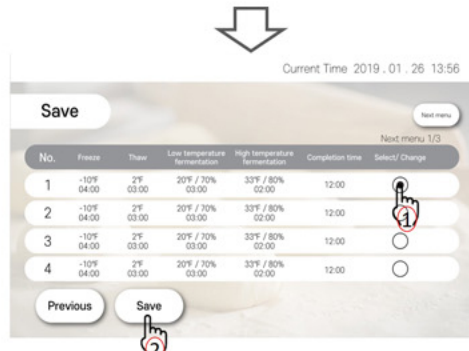
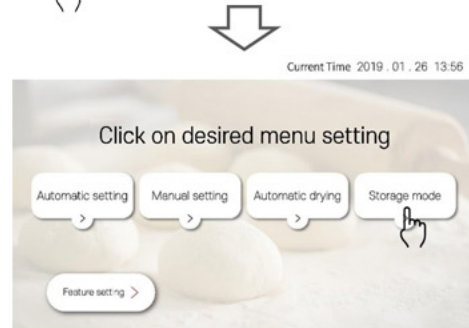
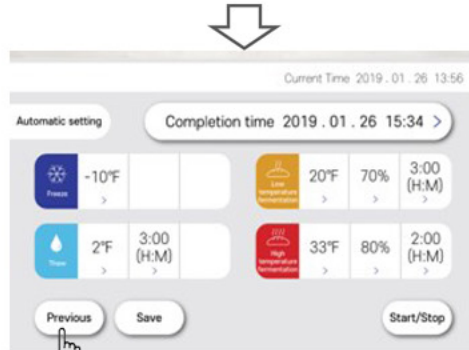
## 4) Save



After completing all time settings, you may press [Start/Stop] at the bottom, but you can also [Save] to load the current mode later.

Save Page 1~3, No.1~12 at the desired Page No. to load the automatic setting at the storage mode later without additional setting.

# OPERATION METHOD



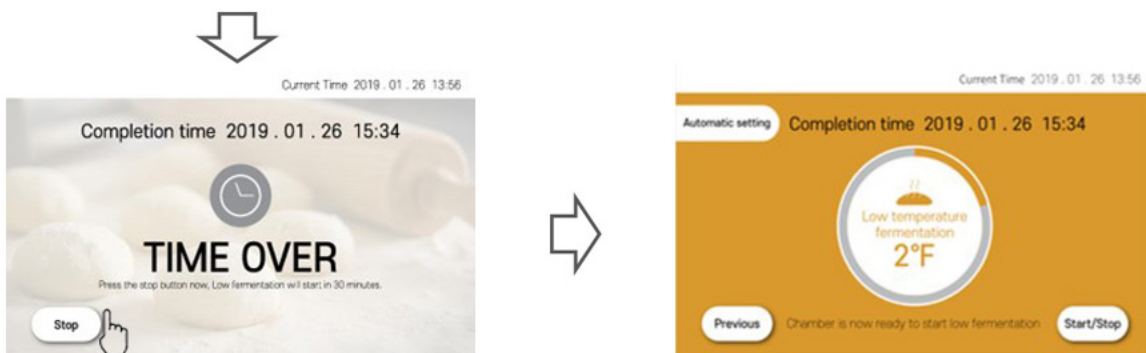
# OPERATION METHOD

## 5) Start / Stop



Run in the order of Freeze → Thaw → Low temperature fermentation → High temperature fermentation to complete on the completion date and time.

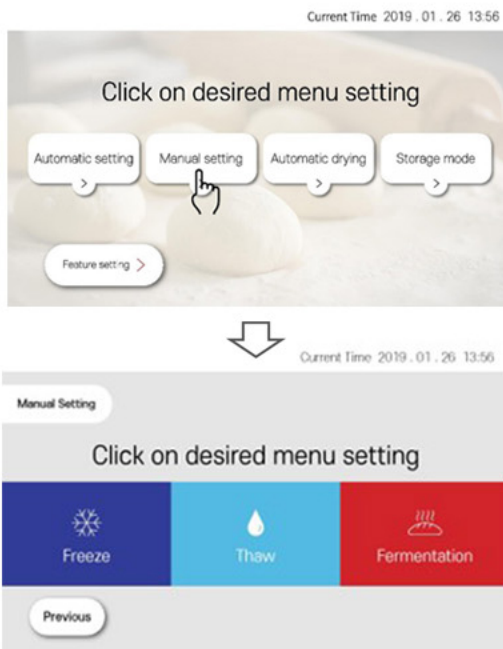
Freezing time = {Completion date and time - (Thaw + Low temperature fermentation + High temperature)}



When all processes are completed, the screen changes to [TIME OVER] and buzzer will be activated for 30 minutes. If [Stop] is untouched, the [Low temperature fermentation] mode is automatically switched on after 30 minutes.

# OPERATION METHOD

## 2. Manual Setting :



### 1. Freeze

- Setting range  
Temperature : 5 ~ 32 °F

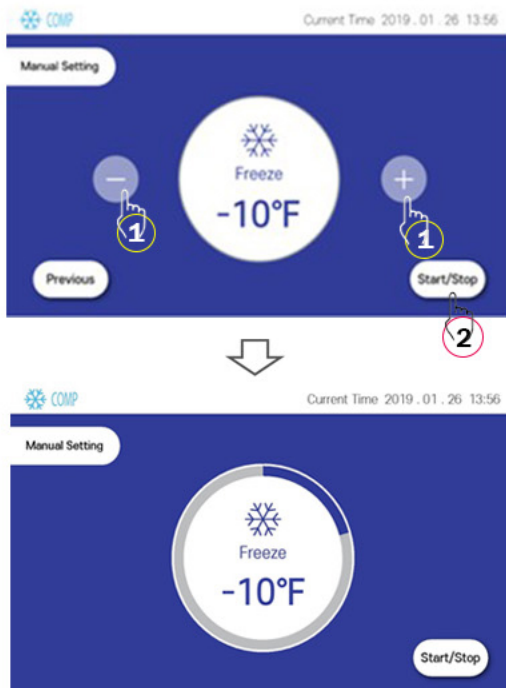
### 2. Thaw

- Setting range  
Temperature : 32 ~ 73 °F

### 3. Fermentation

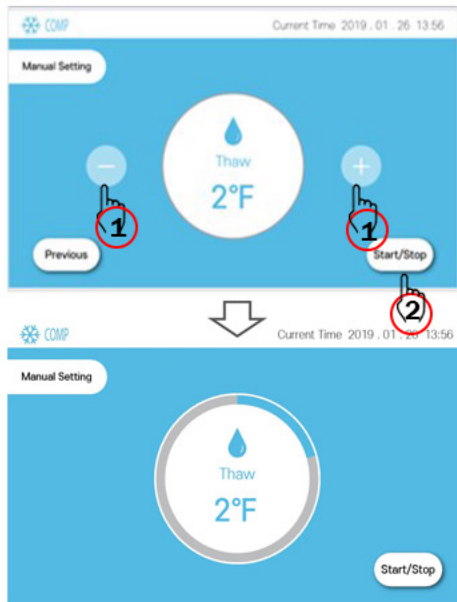
- Setting range  
1) Temperature : 59 ~ 104 °F  
2) Humidity : 0 ~ 100 %

### 1) Freeze



# OPERATION METHOD

## 2) Thaw

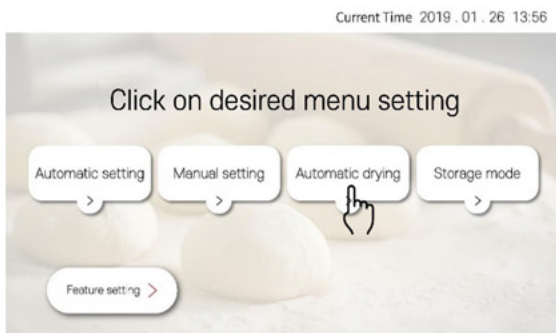


## 3) Fermentation



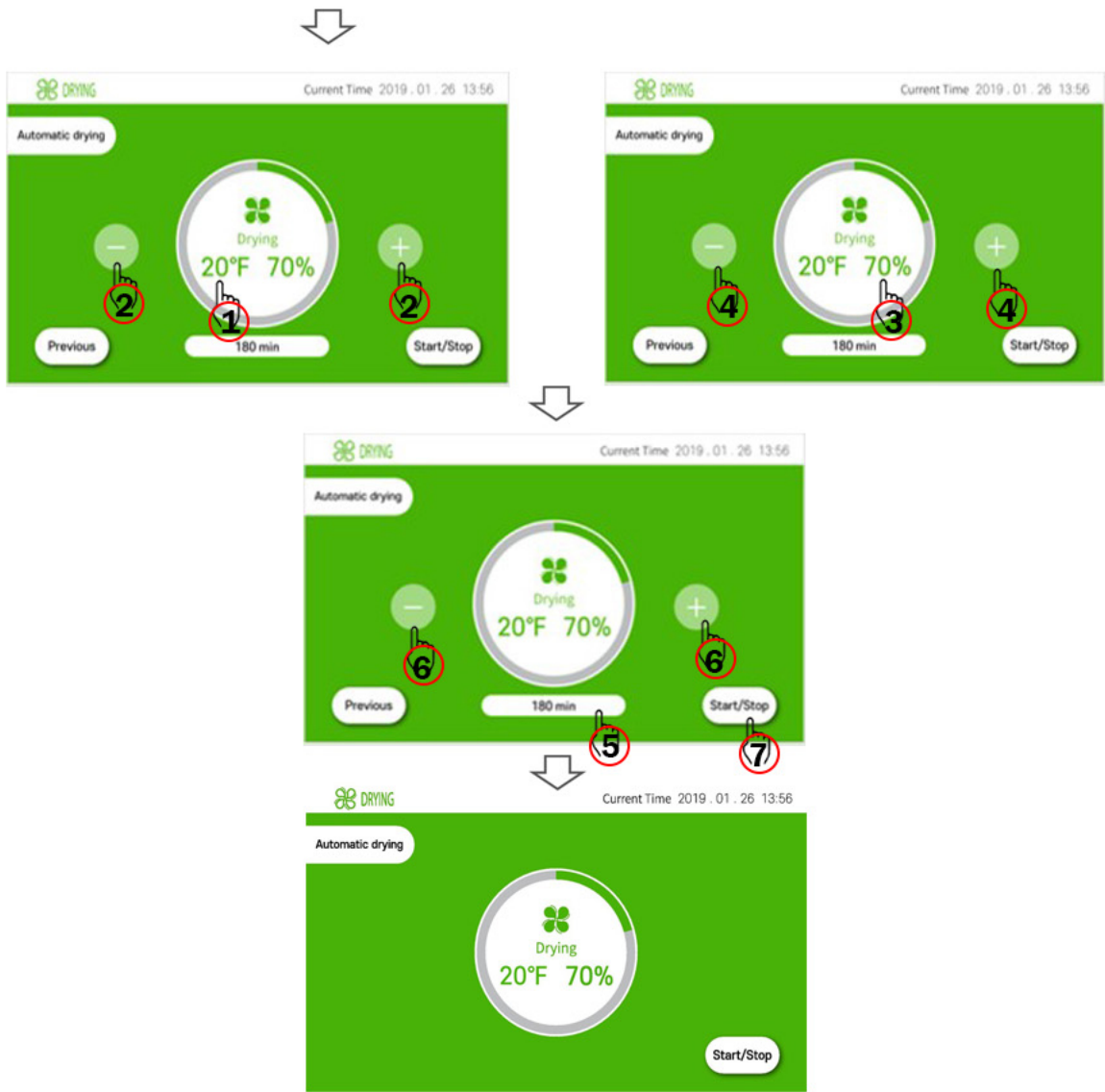
# OPERATION METHOD

## 3. Automatic Drying



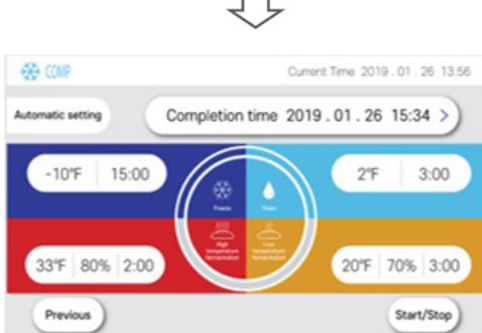
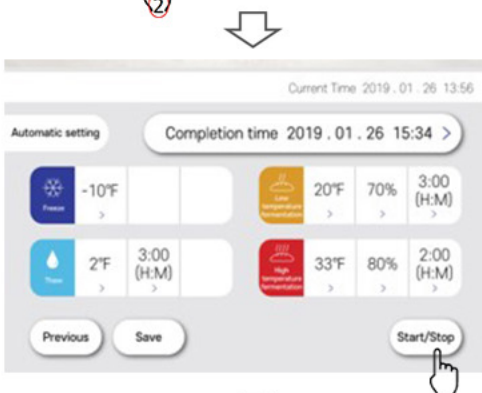
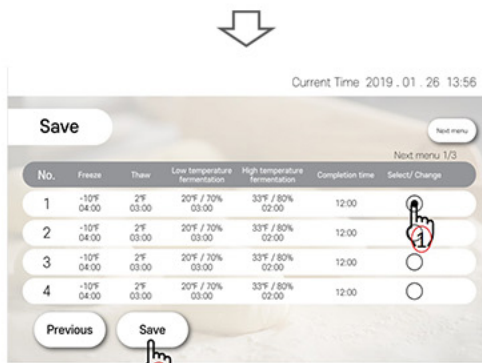
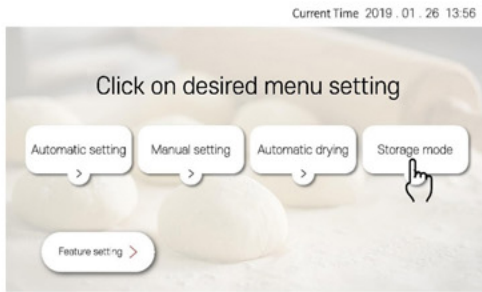
### Automatic drying :

- Corrosion and damage prevention mode to remove internal humidity
- Setting range
  - 1) Temperature : 95 ~ 113 °F
  - 2) Humidity : 20 ~ 30 %



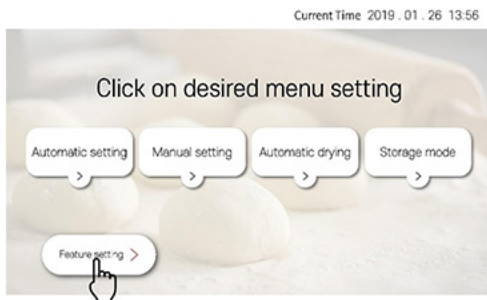
# OPERATION METHOD

## 4. Storage Mode

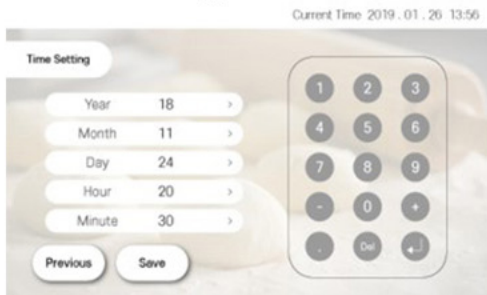


# OPERATION METHOD

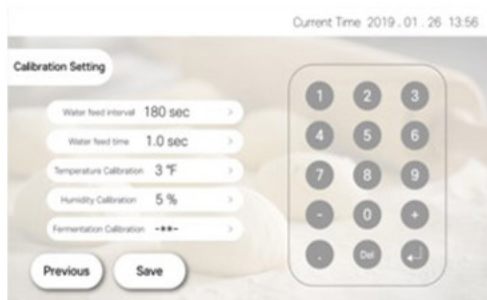
## 5. Feature Setting



### 5-1. Time Setting



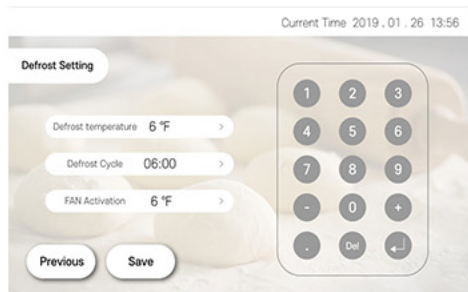
### 5-2. Calibration Setting



#### Calibration Setting :

- The default settings are Water feed interval 180 sec, Water feed time 1.0 sec
- Water feed control and temperature and humidity calibration setting for fermentation. If the water feed for fermentation is low, you can adjust the water feed interval and time to increase the feed interval.

### 5-3. Defrost Setting



#### Defrost setting :

- ⚠ Arbitrary setting change may significantly impact the mechanical functions. Please consult a technician.



# OPERATION METHOD

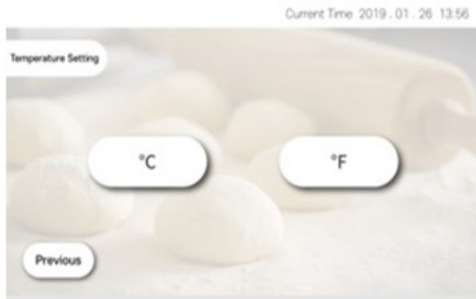
## 5-4. Language Setting



### Language Setting :

Click on [Korea], [English], or [Chinese] to change the language.

## 5-4. °C / °F



### °C / °F :

Click on [°C] or [°F] to change the temperature unit.

## 5-5. History

Current Time 2019. 01. 26 13:56

No.	Time	Start	Low temperature Temperature	High temperature Temperature	Start time	Completion time
1	-10°F 10 04:00	2°F 03:00	30°F / 70%	33°F / 80%	1/25 12:00	1/27 12:00
2	-10°F 04:00	2°F 03:00	30°F / 70%	33°F / 80%	1/25 12:00	1/27 12:00
3		2°F 03:00	30°F / 70%	33°F / 80%	1/27 12:00	1/29 12:00
4	-10°F 04:00	2°F 03:00	30°F / 70%	33°F / 80%	1/28 12:00	1/29 12:00
5	-10°F 04:00	2°F 03:00	30°F / 70%	33°F / 80%	1/29 12:00	1/30 12:00

### History :

- Settings will be automatically saved only when the automatic setting mode is completed.
- Up to 5 automatic completions will be saved. The sixth completion will be saved at the first place, with the fifth place erased.

## 5-6. Troubleshooting



### Troubleshooting :

- You can check any breakdown. Click on a device to run it individually.
- You may need professional help for the risk of damage caused by forceful operation.

## TROUBLESHOOTING

SYMPTOMS	CAUSES	SOLUTIONS
<b>The unit does not refrigerate at all.</b>	<ul style="list-style-type: none"> <li>• There is a power connection failure problem.</li> </ul>	<ul style="list-style-type: none"> <li>• Check the power cord and plug in correctly.</li> </ul>
<b>The unit does not refrigerate well.</b>	<ul style="list-style-type: none"> <li>• The unit is in sunlight or near a heating device.</li> <li>• The unit contains hot food or too much food.</li> <li>• The unit door is opened too frequently or left open too long.</li> <li>• The temp. dial is not on the correct position.</li> <li>• The condenser is clogged.</li> </ul>	<ul style="list-style-type: none"> <li>• Check the installation place.</li> <li>• Check the condition of stored food.</li> <li>• Check the position of the temp control dial.</li> </ul>
<b>There is a loud noise.</b>	<ul style="list-style-type: none"> <li>• The floor is too weak or the leveling feet are set incorrectly.</li> <li>• The back-side of the unit is too close to the wall.</li> </ul>	<ul style="list-style-type: none"> <li>• Check the installation.</li> </ul>
<b>There are dew-drops on the unit exterior.</b>	<ul style="list-style-type: none"> <li>• High-moisture air can produce dewdrops during rainy season.</li> </ul>	<ul style="list-style-type: none"> <li>• Wipe with a dry cloth.</li> </ul>
<b>There are dew-drops on the unit interior.</b>	<ul style="list-style-type: none"> <li>• The door is opened too frequently or left open too long.</li> <li>• Damp food is stored.</li> </ul>	<ul style="list-style-type: none"> <li>• Keep the door closed to remove dewdrops.</li> </ul>
<b>The door does not close tightly.</b>	<ul style="list-style-type: none"> <li>• The door is bent.</li> <li>• The unit is not levelled correctly.</li> <li>• The door gasket has come out.</li> </ul>	<ul style="list-style-type: none"> <li>• Level the unit again.</li> <li>• Reposition the gasket.</li> </ul>

### The following points are not malfunctions:

- A water-flowing sound can be heard when the compressor stops. This is the sound of REFRIGERANT flowing.
- The compressor does not run during the defrost cycle.

Note: Formation of condensation on and around the edge of the door and the front side of the cabinet is normal. Gurgling noises inside the refrigerating circuit are normal.

### **ONE (1) YEAR WARRANTY**

#### ***Warranty Claims...***

All claims for parts or labor must be made directly through Radiance. All claims should include: model number of the unit, the serial number of the cabinet, proof of purchase, date of installation, and all pertinent information supporting the alleged defect. In case of compressor replacement under warranty, either compressor or compressor tag must be returned to Radiance along with above listed information. Failure to comply with warranty policies will result in voiding claims.

#### ***One (1) Year Parts & Labor Warranty...***

Radiance warrants all new refrigerated components, the cabinet and all parts, to be free from defects in materials or workmanship, under normal and proper use and maintenance service as specified by Radiance and upon proper installation\* (indoor building only) and start-up in accordance with the instruction packet supplied with each Radiance unit. Radiance's obligation under this warranty is limited to a period of One (1) years from the date of original installation or fifteen (15) months after shipment date from Radiance, whichever occurs first. Any part, covered under this warranty, that is by Radiance to have been found defective within One (1) years of original installation or fifteen (15) months after shipment date from manufacturer, whichever occurs first, is limited to the repair or replacement, including labor charges only and reasonable travel time, as determined by Radiance. (\*Installation in unstable, mobile, and enclosed area may not be considered as proper installation. )

#### ***R-290/R-600a Hydrocarbon Compressor Warranty...***

The compressor warranty will be void if the following procedure is not carefully adhered to :

1. This system may contain R290 refrigerant and polyol ester lubricant.  
The polyol ester lubricant has rapid moisture absorbing qualities. If long exposure to the ambient conditions occur, the lubricant must be removed and replaced with new.
2. Drier replacement is very important and must be changed when a system is opened for servicing.  
Drier with XH-7 molecular sieve or better must be used.
3. Micron level vacuums must be achieved to ensure low moisture levels in the system. 500 microns or lower must be maintained.
4. Compressor must be obtained through Radiance, unless otherwise specified in writing, through Radiance's warranty department.

## WARRANTY INFORMATION

### ***What is Not Covered by This Warranty...***

Radiance's sole obligation under this warranty is limited to either repair or replacement of parts, subject to the additional limitations below. This warranty neither assumes nor authorizes any person to assume obligations other than those expressly covered by this warranty.

NO CONSEQUENTIAL DAMAGES. RADIANCE IS NOT RESPONSIBLE FOR ECONOMIC LOSS; PROFIT LOSS; OR SPECIAL, INDIRECT, OR CONSEQUENTIAL DAMAGES, INCLUDING WITHOUT LIMITATION, LOSSES, OR DAMAGES ARISING FROM FOOD OR PRODUCT SPOILAGE REGARDLESS OF WHETHER OR NOT THEY RESULT FROM REFRIGERATION FAILURE.

WARRANTY IS NOT TRANSFERABLE. This warranty is not assignable and applies only in favor of the original purchaser/user to whom delivered. ANY SUCH ASSIGNMENT OR TRANSFER SHALL VOID THE WARRANTIES HEREIN AND SHALL VOID ALL WARRANTIES, EXPRESS OR IMPLIED, INCLUDING ANY WARRANTY OF MERCHANTABILITY OR LABOR COVERAGE FOR COMPONENT FAILURE OR OTHER THE WARRANTY PACKET PROVIDED WITH THE UNIT.

Radiance will not be held responsible for the following external factors: ALTERATION, NEGLIGENCE, ABUSE, MISUSE, ACCIDENT, DAMAGE DURING TRANSIT OR INSTALLATION, FIRE, FLOOD, ACTS OF GOD, OR IMPROPER ELECTRICAL CONNECTIONS.

RADIANCE IS NOT RESPONSIBLE FOR THE REPAIR OR REPLACEMENT OF FAILED OR DAMAGED COMPONENTS RESULTING FROM ELECTRICAL POWER FAILURE, THE USE OF EXTENSION CORDS, LOW VOLTAGE, OR VOLTAGE DROPS TO THE UNIT.

Use of NON-OEM parts without manufacturer's approval may void cabinet warranty.

NO IMPLIED WARRANTY OF MERCHANTABILITY OR FITNESS FOR A PARTICULAR PURPOSE; THE FOREGOING WARRANTIES ARE EXCLUSIVE AND EXPRESSLY GIVEN IN LIEU OF ALL OTHER WARRANTIES, EXPRESSED, IMPLIED OR STATUTORY.

THERE ARE NO WARRANTIES, WHICH EXTEND BEYOND THE DESCRIPTION ON THE FACE HEREOF.

Warranty information card must be submitted via post mail or electronically on our website at [www.turboairinc.com/registration](http://www.turboairinc.com/registration) within 7 days from the purchase date. Failure to comply may result in your warranty being voided.

All coverage provided within this warranty is applicable only to the United States, including Alaska and Hawaii, and Canada, excluding U.S. Territories; limited parts only warranty in U.S. Territories. Radiance is not responsible for any warranty claims made on products sold or used outside the fifty states of the United States.

The extended warranty period specific to each Radiance product applies to all units sold by Radiance starting December 1, 2016.





## Warranty Registration & Claim Instruction

1. Please visit the website below.

<https://www.turboairinc.com/gkradiance/warrantyclaim/>

2. Click 'Warranty'

3. Click 'Warranty Registration' and fill out the 'Serial Number' and 'Email Address', and then click 'Verify'.

4. Fill out the required section.

5. After the registration, click 'Warranty Claim'. And then, fill out the 'Serial Number' and 'Email Address', and then click 'Verify'.

6. Fill out the required section.

The screenshot displays the Turbo Air website's warranty section. The navigation menu includes 'Products', 'Parts', 'Warranty', 'Sales Network', 'Order Status Check', 'Resource Center', and 'Why German Kufel?'. The 'Warranty' menu item is circled in red and labeled '1.'. Below the navigation, there are four links: 'Warranty Status Check', 'Warranty Claim', 'Warranty Statement', and 'Warranty Registration'. The 'Warranty Registration' link is circled in red and labeled '2.'. The 'Warranty Claim' link is circled in red and labeled '3.'. The 'Warranty Registration' page is titled 'Warranty Registration' and features a 'Warranty Registration Check' form with two required fields: 'Serial Number \*' and 'Email Address \*'. Below the form is a purple 'VERIFY' button. A note at the bottom of the form states: '\* You may be asked to present a proof of purchase for any reason.'



 **RADIANCE**

**GERMAN KNIFE** German Knife Inc.

4184 E. Conant St., Long Beach, CA 90808

Toll free : 1-800-500-3519

Fax : 562-429-7061

Email : [gkrsvc@turboairinc.com](mailto:gkrsvc@turboairinc.com)

[www.turboairinc.com](http://www.turboairinc.com)