

Steering Knuckle Modifications - Paragon Tesla Model 3 365mm Front Rotors

The parting lines / flash on certain parts of the OEM steering knuckle may interfere with the mounting brackets, and need to be slightly grinded down before installation for proper fitment

Step 1: Locate and place the bracket onto the mounting points of the steering knuckle (Fig. 1)

Step 2: Inspect and determine the parting lines / flash that need to be removed on the 2 mounting points of each steering knuckle (Fig. 2)

Step 3: Using a file, Dremel, or a die grinder, remove the parting lines / flash that interfere with the mounting brackets

WARNING: Eye protection required while operating power tools

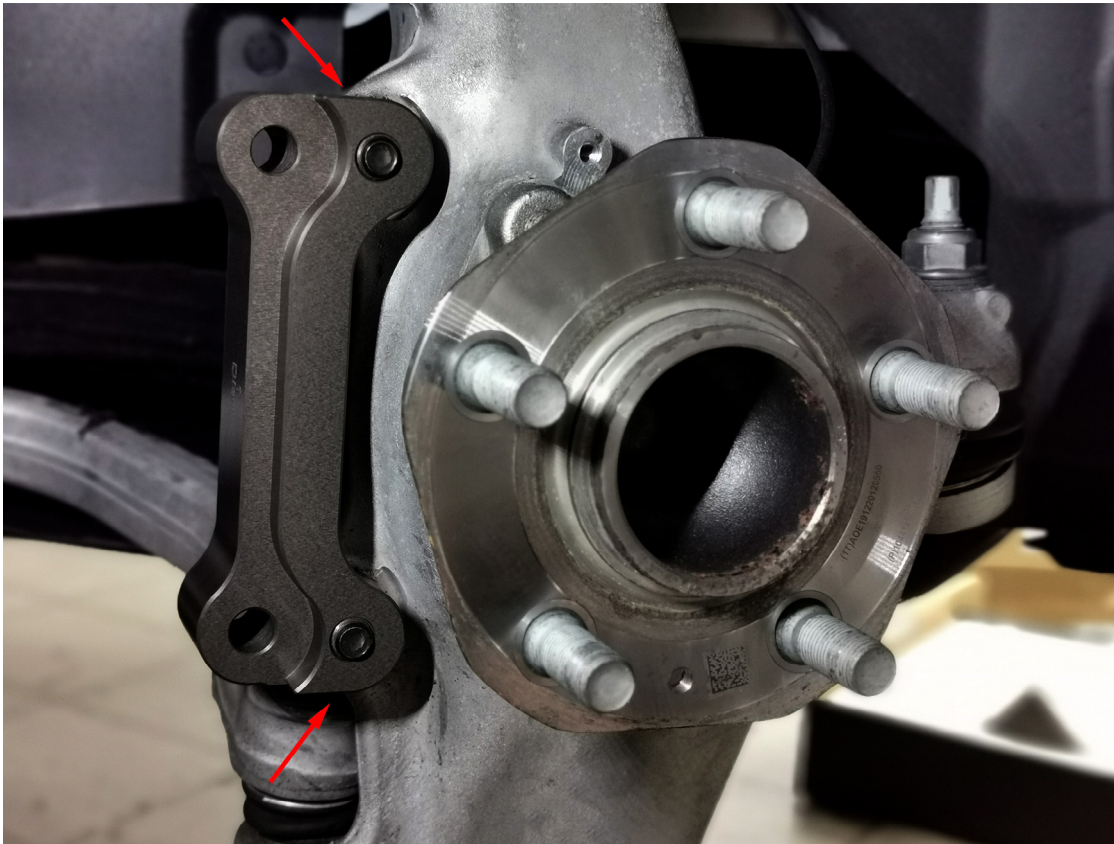


Fig. 1

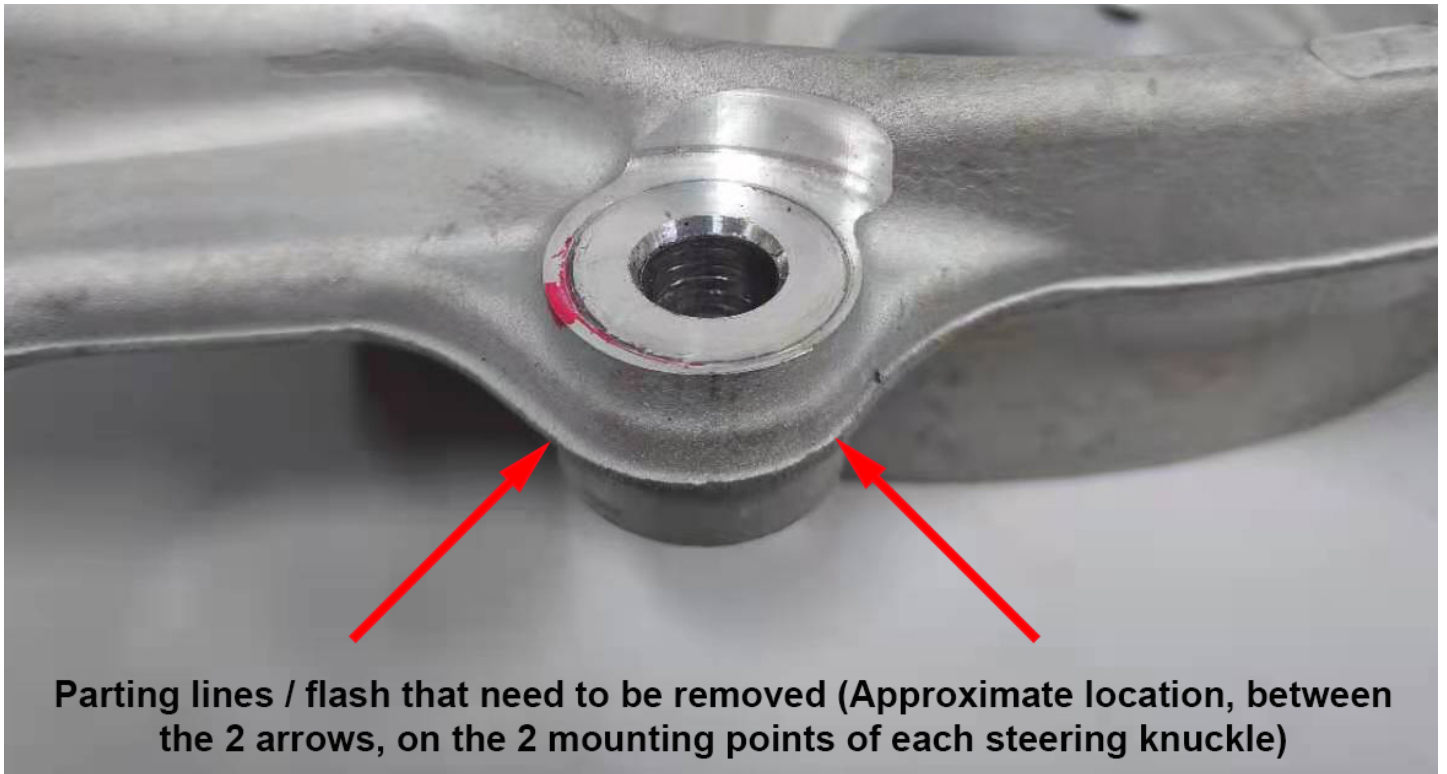


Fig. 2

**If you need any assistance, please contact
technical support at tech@paragonbrakes.com**

Paragon Performance Products Inc.

<https://www.paragonbrakes.com>