

**DAVIMAC**



# 25-35T CHASER BINS

SIMPLE | ROBUST | RELIABLE





## **BIN THERE, DONE THAT..** SINCE 1982

Davimac machines are known for their quality, longevity and ease of use. They are built tough, minimising maintenance with bolt-on user-replaceable parts, as well as featuring wide, high-speed augers that unload fast, and simple and robust undercarriages designed to get you between headers and field bins without the fuss. Our industry-leading designs have delivered efficiency and less worries for over 40 years.

With a range packed full of standard features and inclusions, as well as a wide selection of optional attachments and accessories, our chaser bins are easily customisable to your specific needs.

We have partnered with trusted and experienced dealers all over Australia, with all states and territories represented. We also offer comprehensive customer service, support, and spare parts - all backed by our Davimac warranty.

Our chaser bins are fully Australian made, being designed and built in regional NSW. They have been engineered from the ground up to make your harvest run as efficiently and profitably as possible.

With bold design and tough construction, Davimac Chaser Bins are built for your farm and the harshest of Australian conditions.

TOP FEATURES .....	5	BUILT TO LAST .....	12
STANDARD FEATURES.....	7	OPTIONS AND ACCESSORIES .....	14
AUGER FEATURES.....	9	THE DAVIMAC DIFFERENCE .....	17
STANDARD INCLUSIONS.....	11	SPECIFICATIONS.....	18

**DISCLAIMER:**  
All care has been taken to ensure the information presented in this booklet is correct at the time of printing. However, features and specifications may change without notice.



## TOP FEATURES

BUILT TOUGH



### LOW-LOAD BIN HEIGHT

One of the lowest bin heights on the market, at only 3.31 m improves ride and reduces the risk of heasder auger collisions.

### STRONG CURVED SIDES

The buckle-resistant curved sides will withstand the stress of a full, heavy load. Steep bin sides ensure smooth grain flow to the horizontal auger.

### 20" DISCHARGE AUGER

Hydraulic, single-fold auger with thick 10 mm flights, unloading up to 12 tonnes per minute.

### CUSHIONED A-FRAME

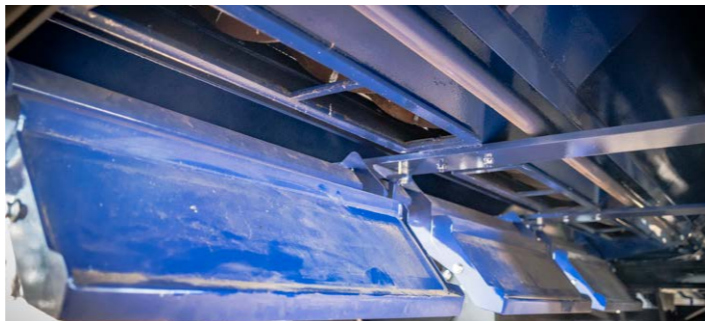
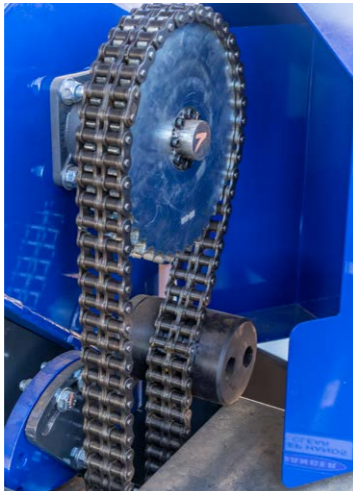
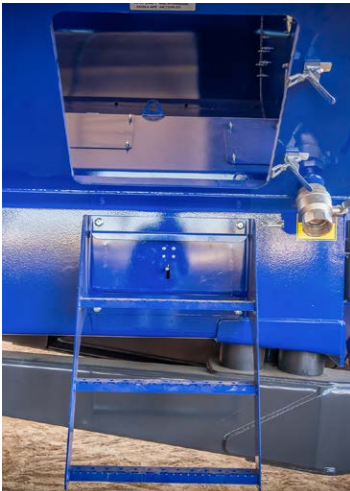
The rubber-cushioned, floating drawbar absorbs bumps in terrain, reducing wear and tear on the chassis and tractor.

### ROBUST UNDERCARRIAGE

Designed to be simple, robust, and dependable by eliminating potential points of failure. Australian engineered Harvest tyres are attached via a 12-stud hub axle.

### FULLY AUSTRALIAN-MADE

Designed and built in Australia for Australian farmers.



## STANDARD FEATURES

BUILT WITH THE FARMER IN MIND

### EASY INTERNAL ACCESS

Access ladder and door for maintenance and cleaning. Welded foot supports enable safe and convenient passage.

### RELIABLE GEARBOX

Reduced maintenance needs and extended operational lifespan with the large gearbox and rugged and simple chain drive.

### ADJUSTABLE SWIVEL BALL HITCH

Better match smaller tractor pins with our custom-designed swivel tow eye ball hitch with changeable ball size.

### SIMPLE CLEANOUT

Easily open or close all six cleanout doors with a single easy to access lever at the rear of the bin.

### FLOATING WALKING BEAM

Tandem-axle models have a central floating pivot to allow smooth navigation of uneven terrain and reduce the effects of compaction on your soil.

### PLUS:

- ✓ NO TRANSPORT ESCORT REQUIRED
- ✓ BOLT-ON REPLACEABLE PARTS





## AUGER FEATURES

ROBUST & EFFICIENT

### QUICK UNLOAD

The 20" single-fold discharge auger maximises harvest efficiency with an unload speed of up to 12 tonnes per minute, or **1 tonne every 5 seconds**. Choose from standard 1,000 RPM PTO high-speed drive or optional hydraulic drive, as well as right or left-hand side discharge.

### STRONG CONSTRUCTION

The dual-auger design has been built to be rugged and reliable. The 508 mm (20") diameter vertical auger has fully-balanced, thick 10 mm flights, welded around 150 mm centre pipe. The horizontal cross auger has a 405 mm (16") diameter with 6 mm flights.

### CONTROL THE FLOW

Hydraulically operate the spout with rubber chute to focus and adjust the flow of grain with complete accuracy and control. The auger's discharge angle and height is also fully adjustable. A shut-off door at the base of the vertical auger controls flow-rate.

### ULTRA-BRIGHT AUGER LIGHTS

All bins come with twin, 48W 16 LED 3,000 lumens lamps, mounted to the auger spout as standard.



## STANDARD INCLUSIONS ON EVERY DAVIMAC

### GRAIN SAMPLING

Easily collect real-time samples to conduct grain quality tests.

### GATE INDICATOR & WINDOWS

Easy visual verification of the gate status from the cab. See into the bin through two large 6mm perspex windows, with an additional window at the base of the auger.

### CTF ADJUSTABLE WHEEL CENTRES

The wheel centres are user-adjustable from 2.56 m to 3 m for Controlled Traffic Farming (CTF) operations.

### HEAVY-DUTY TARP

900GSM PVC reinforced polyester roll tarp.

### ROAD TRANSPORT KIT

Tow your bin on public roads with the weather-resistant 'Oversized' sign, high-viz flags, light beacon, and LED tail lights.

### PLUS:

- ✓ SAFETY CHAIN
- ✓ TOOLBOX
- ✓ ADJUSTABLE JACK STAND
- ✓ DAVIMAC WARRANTY



# BUILT TO LAST

OVER-ENGINEERED TO BE TOUGH AND RELIABLE

- ▶ The vertical auger flights are constructed with 10 mm steel, instead of the industry-standard 6 mm steel. This helps avoid them becoming unbalanced due to bowing.
- ▶ The undercarriage on the bogey-axle models is rated to over double its carrying capacity, at 80 tonne.
- ▶ The front, back and underside of the superstructure is made from heavy 6.4 mm steel plate, offering extra strength and durability.
- ▶ The heavy-duty chassis is constructed with strong 10 mm and 16 mm plate for superior strength and performance.
- ▶ The bin is finished with 2-pack paint for resistance to weathering, scratching and chipping.



## OPTIONS AND ACCESSORIES

TO SUIT YOUR FARM

### A LOAD CELLS (SCALES)

Fitted weigh scales with 10 kg increment weigh accuracy and in-cab readout indicator.

### B LIBRA CART HARVEST MANAGEMENT SYSTEM

Wireless transmitter for connection to Libra Cart Software on your smartphone or tablet. (requires load cells)

### C AUGER HOPPER CHUTE

Distribute feed with an adjustable-height auger hopper chute.

### D LONG-REACH AUGER

Add 500 mm to the length of the auger for a total length of over 6.0 metres whilst maintaining single-fold functionality.

ALSO AVAILABLE:

### HYDRAULIC DRIVE

500 RPM hydraulic drive motor to maximise compatibility with older tractors without PTO.

### REAR TOW & LUG

Combined tow hitch and heavy-duty lug with recovery point.

### E CUSTOM COLOURS

Match your tractor or header with an alternate 2-pack paint finish; available in custom red, or green with yellow wheels.

### F FIRE-FIGHTING

9 L fire extinguisher (air/water mix), OR forward-mounted fire fighting unit with 250 L tank, pump, and 36 m hose.

### G RIGHT-HAND DISCHARGE

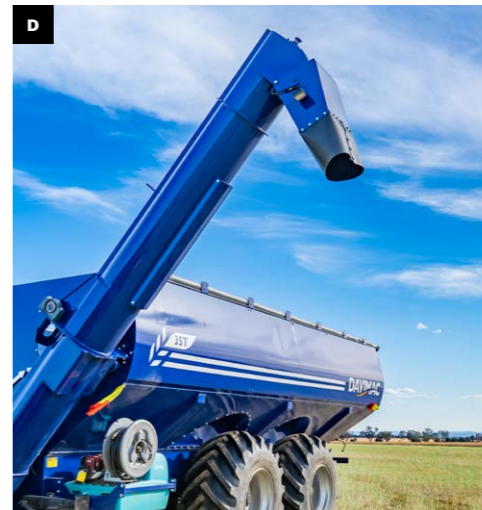
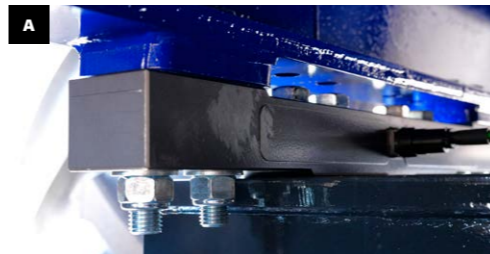
Optional factory-fitted right-hand auger discharge.

### H CAMERA KIT

Three cameras with 9" monitor. Pre-wired and placed at the rear of the bin, a view into the bin, and top of the auger.

### HIGH-FLOTATION TYRES

Lower soil displacement under heavy loads and at all speeds with optional Trojan R3 800/65 R32 high-flotation tyres. Designed for both flotation and traction without the soil compaction.







# DAVIMAC



🔍 [davimac.com.au](https://davimac.com.au)

## BUILD A BIN

- ✓ PRODUCT CONFIGURATOR

## HELP & SUPPORT

- ✓ OWNERS AND PARTS MANUALS
- ✓ VIDEOS AND SUPPORT ARTICLES
- ✓ WARRANTY ASSISTANCE

## SPARE PARTS STORE

- ✓ DELIVERY TO YOU OR YOUR DEALER
- ✓ SEARCH BY PART NAME OR SKU



## THE DAVIMAC DIFFERENCE

UNBEATABLE SERVICE & GENUINE SPARE PARTS

At Davimac, we know how important it is that your machine is as well-supported ten years from now as it is today. Backed by our Davimac Warranty and nationwide dealer network, we go above and beyond to deliver the best in product and after sales service.

Our dedicated warehouse team makes sure your Davimac machine is always ready to go and our online spare parts store and manual library is available day and night. We offer spare parts and accessories for current and legacy Davimac machines.

MODEL	SINGLE-AXLE		DUAL-AXLE	
	25T	30T	30T	35T
<b>CONSTRUCTION</b>				
Level capacity (volume)	31.3 m <sup>3</sup>	37.7 m <sup>3</sup>	37.4 m <sup>3</sup>	43.6 m <sup>3</sup>
Wheat capacity (0.8 kg/l)	25 tonne	30 tonne	30 tonne	35 tonne
Empty weight	8,700 kg	10,000 kg	13,000 kg	14,300 kg
Overall length	9,240 mm	10,409 mm	10,444 mm	11,603 mm
Bin length	6,225 mm	7,430 mm	7,430 mm	8,580 mm
Transport width	3,480 mm (for 2.56 m centers)			
Max. overall height	3,693 mm			
Bin side / filling height	3,310 mm			
Bin side angle	50°			
Underside plate thickness	6.4 mm			
Front and back plate thickness	6.4 mm			
Side plate thickness	3 mm			
Chassis and axles	10 & 16 mm plate	10 & 16 mm plate, 300 x 300 x 16 mm RHS		
<b>UNDERCARRIAGE</b>				
Axles	Single-axle	Tandem-axle with floating walking beam and centre pivot		
Total axle load capacity	40 tonne	80 tonne		

MODEL	SINGLE-AXLE		DUAL-AXLE		
	25T	30T	30T	35T	
Studs per wheel	12				
Tyres	Standard	800/65 R32	900/60 R32	30.5x32 18 ply	30.5x32 18 ply
	Alternative	900/60 R32	-	900/60 R32	900/60 R32
	Option	Flotation tyres - Harvest Trojan R3 (800/65 R32)			
Wheel centers	2.56 m, adjustable to 3 m				
<b>AUGER</b>					
Vertical auger diameter	508 mm (20")				
Vertical auger construction	10 mm thick flights welded around 150 mm circular pipe				
Vertical auger length	5562 mm				
Vertical auger discharge reach	2,380 mm (2.6 m centers), 2,180 mm (3.0 m centers)				
Horizontal auger diameter	405 mm (16")				
Horizontal auger construction	6 mm flights				
Vertical-horizontal auger coupling drive	Direct drive				
Adjustable auger discharge height range	800/65 R32	4406 to 4662 mm	-	-	-
	900/60 R32	4456 to 4712 mm	4447 to 4704 mm	4447 to 4704 mm	4447 to 4704 mm
	30.5x32 18 ply	-	-	4430 to 4686 mm	4430 to 4686 mm
Unload speed	Up to 12 tonnes / minute (PTO drive)				
Gearbox & drive	130 HP long shaft gearbox, chain drive				

MODEL	SINGLE-AXLE		DUAL-AXLE	
	25T	30T	30T	35T
<b>STANDARD INCLUSIONS</b>				
Standard features	Rubber cushioned drawbar, grain sampling valve, adjustable swivel ball hitch, clean out doors (6) with single lever operation, safety chain, toolbox, jack stand, auger protection guard			
Internal bin access	Side access hatch and ladder, internal foot platforms			
Roll tarp	900 GSM Panama-woven 1100 dtex PVC coated polyester with high tenacity yarn. UV stabilised and FR treated with heat-welding for waterproofing and reinforced load webbing			
Road kit	Pair of 12v halogen orange pole-mounted hazard lights			
Oversize signage	1200 x 400 mm aluminium "Oversize" sign			
Tail lights	Pair of water-resistant IP67-rated LED tail lights			
Auger lights	2x 48W 16 LED 3000 lumens (6000 lumens total)			
Bin windows	Two in the front of the bin, 6 mm perspex			
Auger windows	One in the base of the auger			
<b>RECOMMENDED TRACTOR REQUIREMENTS</b>				
Recommended tractor HP	Check tractor tow capacity			
Required hydraulic remotes	3 (Hydraulic drive option requires additional highflow remotes)			

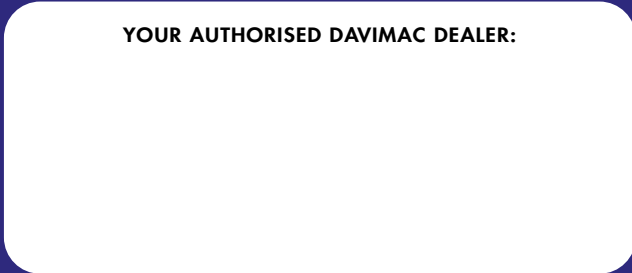
**DISCLAIMER:** All effort has been made to ensure the information and specifications presented in this document are correct at the time of publication however, they may change without notice. Weights, dimensions and specifications are an estimate for standard configurations only and may change slightly during the manufacturing process. Certain options and accessories may be mutually exclusive.

MODEL	SINGLE-AXLE		DUAL-AXLE	
	25T	30T	30T	35T
<b>MACHINE OPTIONS</b>				
Rear lug & towbar	25 tonne capacity lug with recovery points, 3.5 tonne capacity towbar and ball			
Firefighting unit	Rapid Spray 250 L Fire Marshal Plus – SF0200ALZH4 Honda GX25 motor (120 L/min, 75 psi pump), 250L UV-stabilised poly tank, manual hose reel, mounting bracket			
Fire extinguisher	9L air-water mix fire extinguisher, front mounting bracket			
Auger discharge side	Left-hand side (standard), or optional right-hand side (factory built)			
Long-reach auger extension	Adds 500 mm to height of vertical auger (total length 6,062 mm)			
Long-reach auger discharge height	Extends auger discharge height to 5,095 mm			
Auger hopper/feed-out chute	1.47 m or 2.05 m discharge height			
Weigh scales/load cells	25T - 35T scales Topcon/Digi-Star GT 400 indicator and cabling			
Libra Cart transmitter	Battery powered Bluetooth transmitter for scales. Enables wireless connection to Agrimatics Libra Cart Harvest Management System. (iOS / Android app downloaded separately, phone or tablet not included, requires load cell option as prerequisite)			
Hydraulic drive	Hydraulics International MV 400C; 500 rpm (note: will dramatically reduce unload speed)			
Custom 2-pack paint	Green (with yellow wheels) / Red			
Camera kit	1x Farmscan 9" 720p HD Quad Monitor (v3) with brackets 3x Farmscan 3101HD (720p) cameras: (1/3" CMOS with 6mm lens, 92 degree viewing angle) Includes cabling and power			

# DAVIMAC



**YOUR AUTHORISED DAVIMAC DEALER:**



**DAVIMAC HEAD OFFICE**

55 Wellington Street  
Molong NSW 2866

02 6366 8584

[www.davimac.com.au](http://www.davimac.com.au)

[contact@davimac.com.au](mailto:contact@davimac.com.au)

