

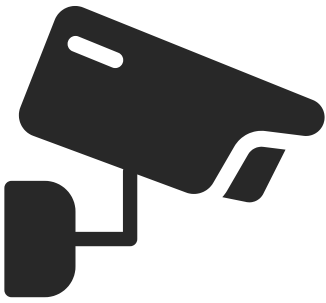
USER GUIDE

Welcome! Let's set up your 4G camera.

Contents:

- 2** What's in the box?
- 3** The beginning
- 4-7** Get to know your camera
- 8-11** Connecting to the App

What's in the box?



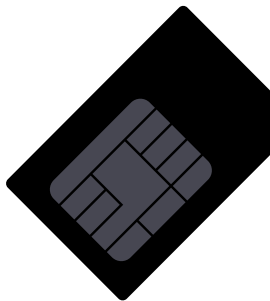
Bullet Camera



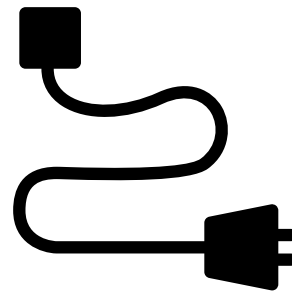
x4 fixing screws



x4 wall plugs



Giffgaff PAYG SIM Card



12v power supply

THE BEGINNING



1. Setting up your SMARTY SIM card

All our camera's are sent out with a SMARTY pay as you go SIM card that can be activated here:

<https://giffgaff.com/activate>

We recommend Giffgaff as its a fair priced SIM provider, but the camera is unlocked to any network.

2. Download the app

The app can be installed via the Google Play Store or the Apple App Store by seraching CamHipro.

You can install the app on as many devices as you wish.



[CamHipro App Store](#)



[CamHipro Play Store](#)



GET TO KNOW YOUR CAMERA

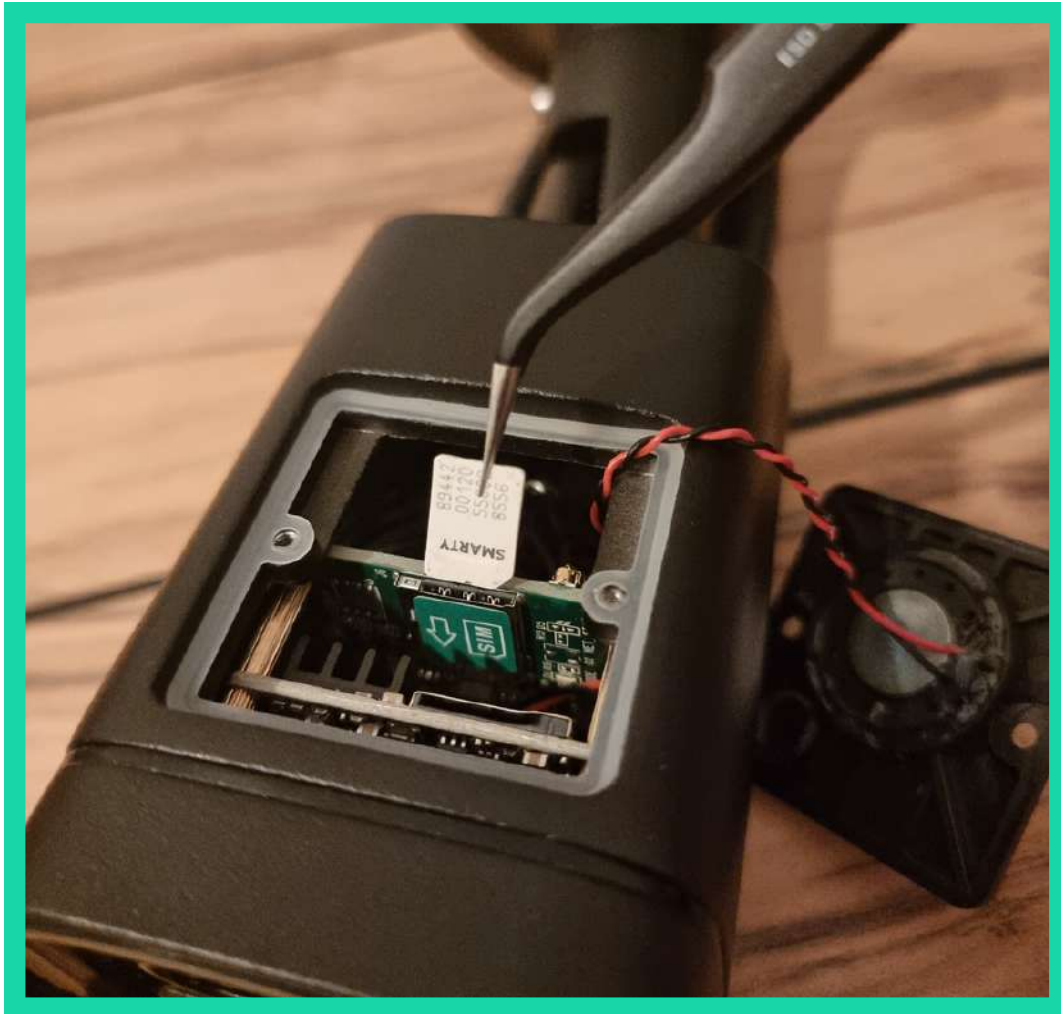
Accessing SD and SIM card slot:



Unscrew screws to access camera.

GET TO KNOW YOUR CAMERA

Inserting your 4G SIM card:



You'll find the 4G interface inside the camera. You'll need to insert your SIM card as shown into the green SIM slot.

GET TO KNOW YOUR CAMERA

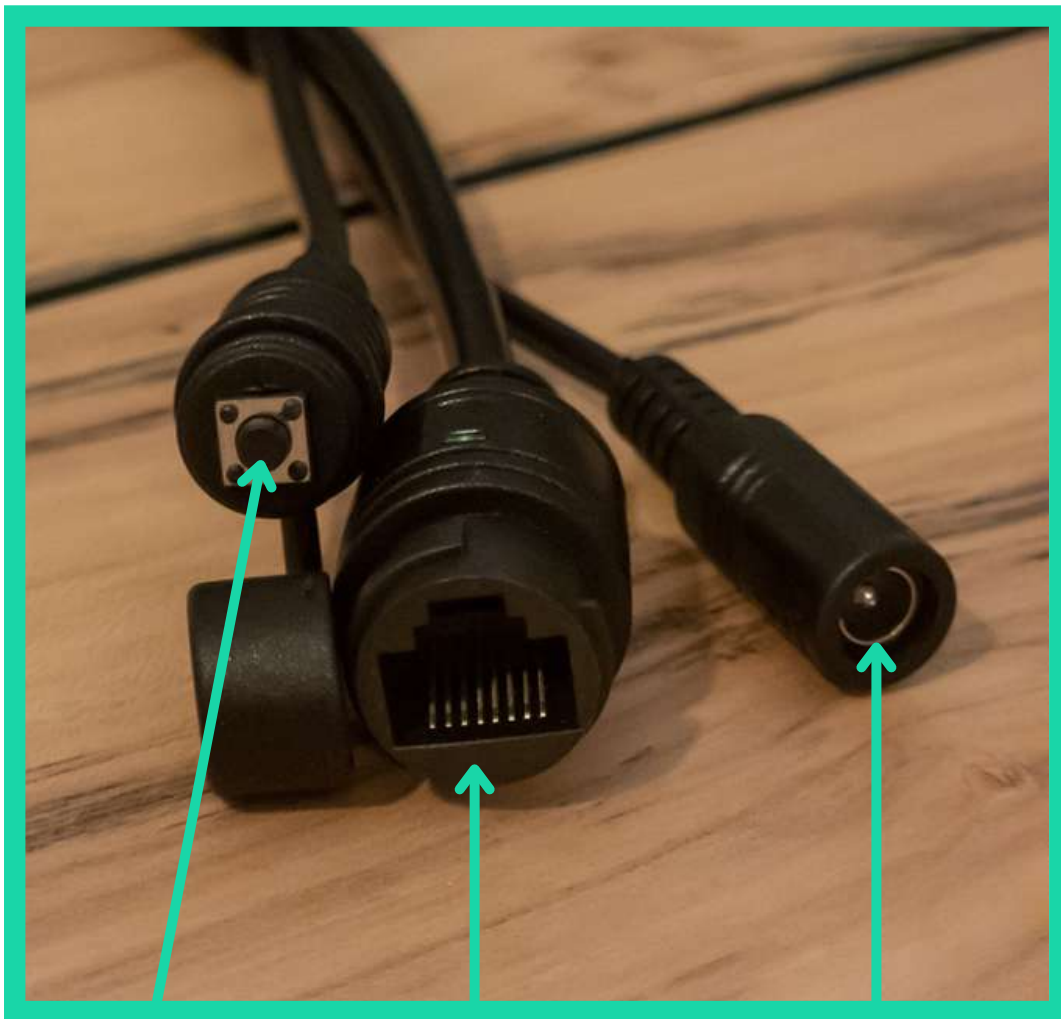
Inserting your SD card:



You will see the slot for your SD card closer to the lens of the camera. Insert SD card as shown in picture above.

GET TO KNOW YOUR CAMERA

Cabling:

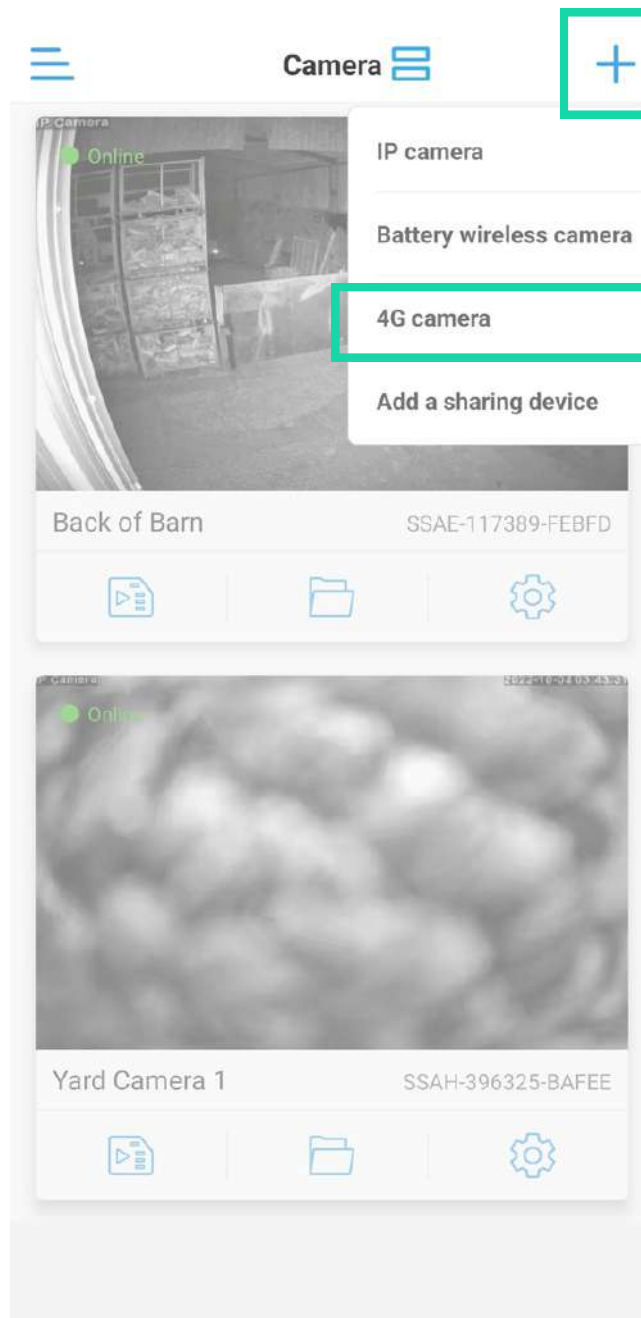


Reset button. Press and hold to reset your camera.

RG45 ethernet cable port. Only works on WiFi version.

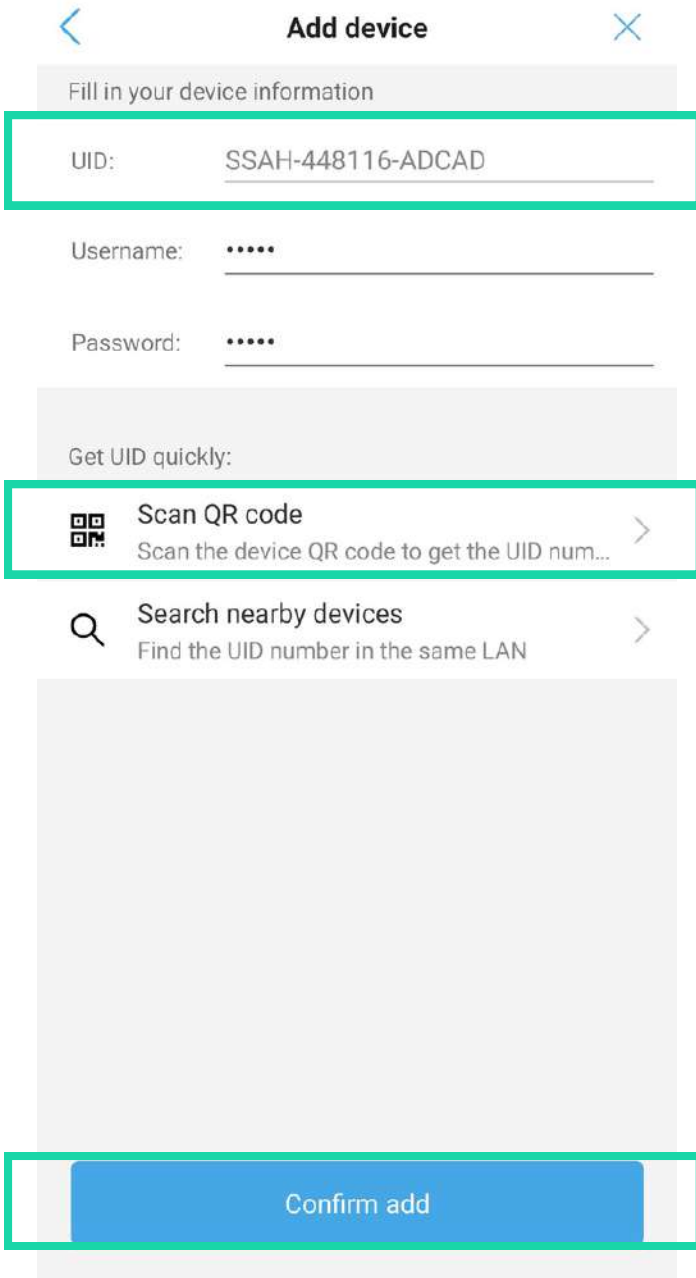
12V DC power input.

CONNECTING TO THE APP



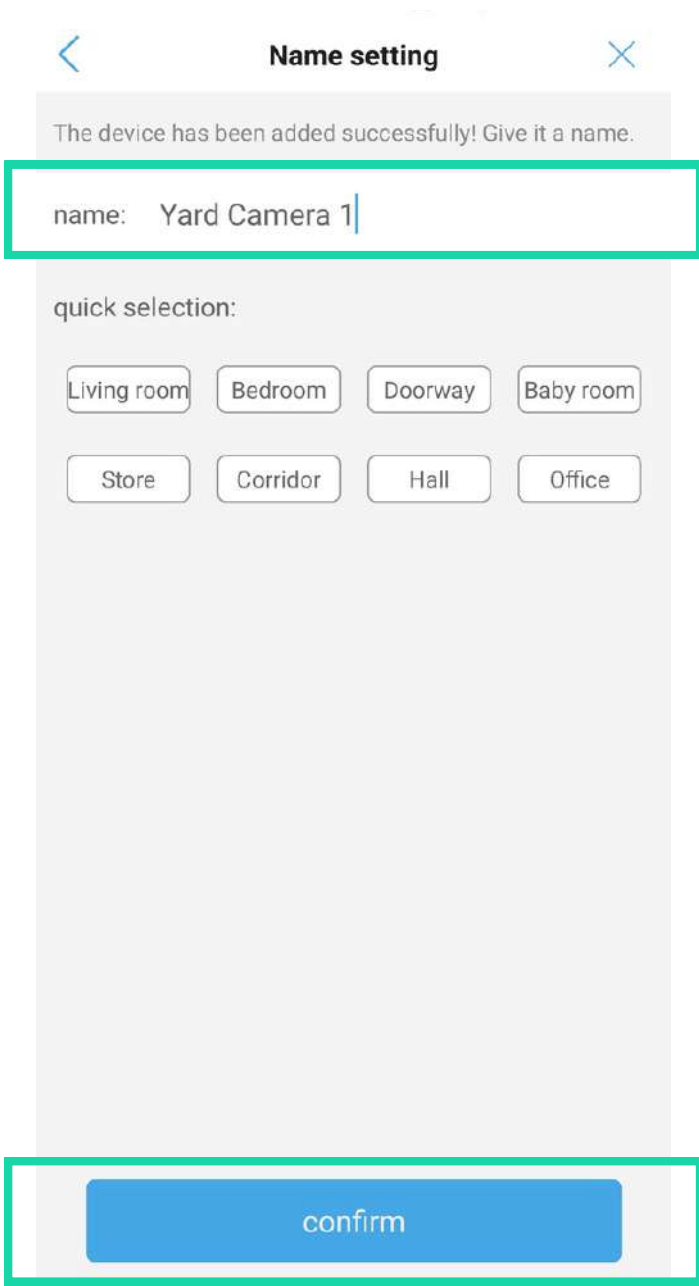
Click + top right of the apps home screen and select 4G camera.

CONNECTING TO THE APP

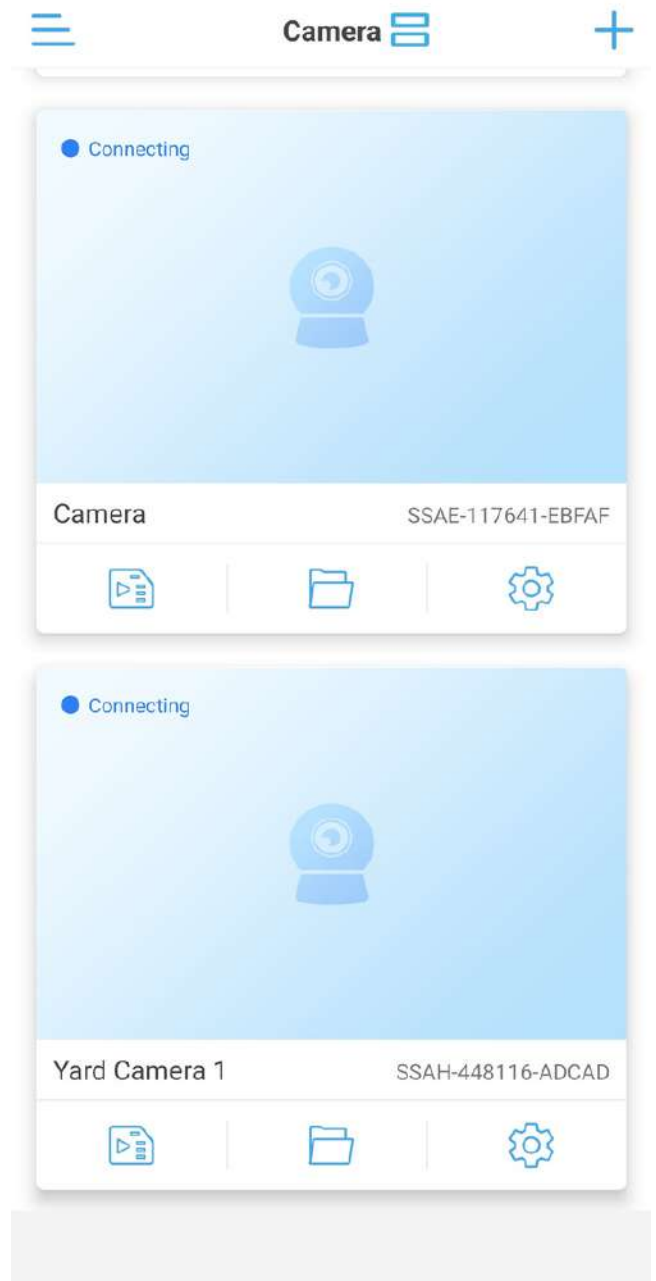


You will need to enter the UID of your camera. This can be found on the underside of the mounting arm. Or you can scan the QR code. Then click 'Confirm add'.

CONNECTING TO THE APP



You will then need to name your camera.



You should now see your camera on the home screen.

The camera may take 15-60 seconds to connect.

CONNECTING TO THE APP

< **Change password**

Old Passw... ..

New Passw... ..

Confirm Pas... ..

The password must contain more than 8 uppercase and lowercase letters and numbers

show password

Apply

When you select you camera, you will be prompted to enter a password. Ensure you remember this as you will need it to add the camera to other devices. Username will always stay as admin.

The camera may take 15-60 seconds to connect.