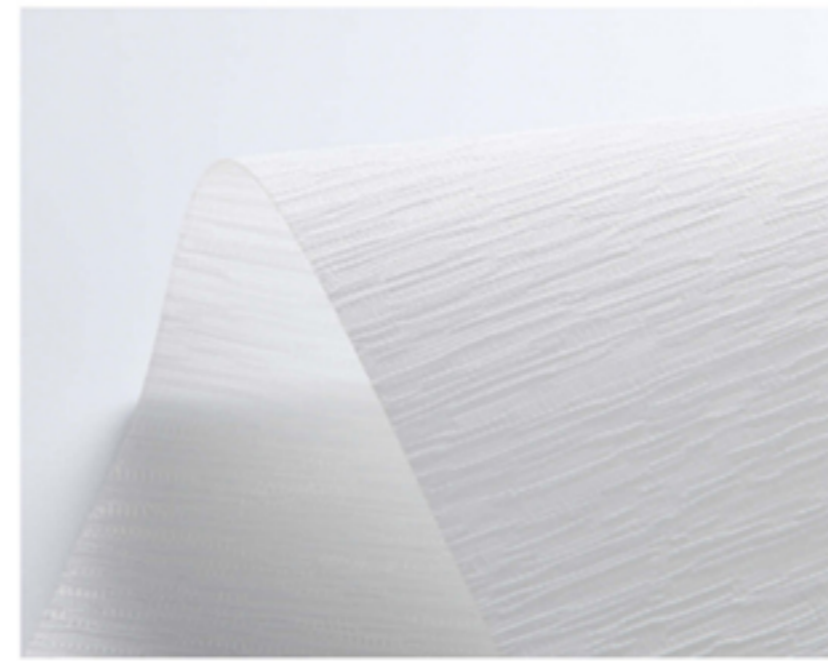




Roller Blinds Collection

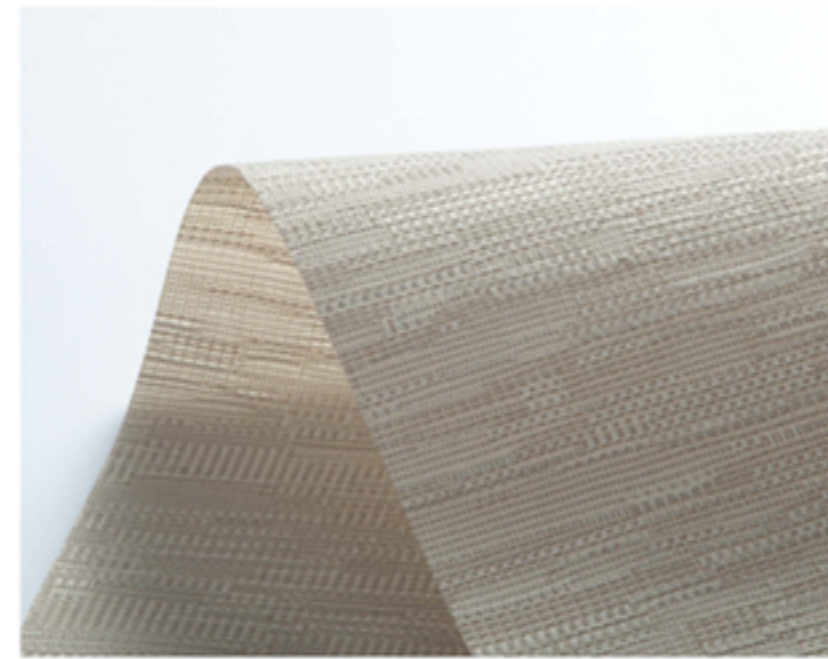
All color for reference only, please refer to the sample fabric book for actual color and texture



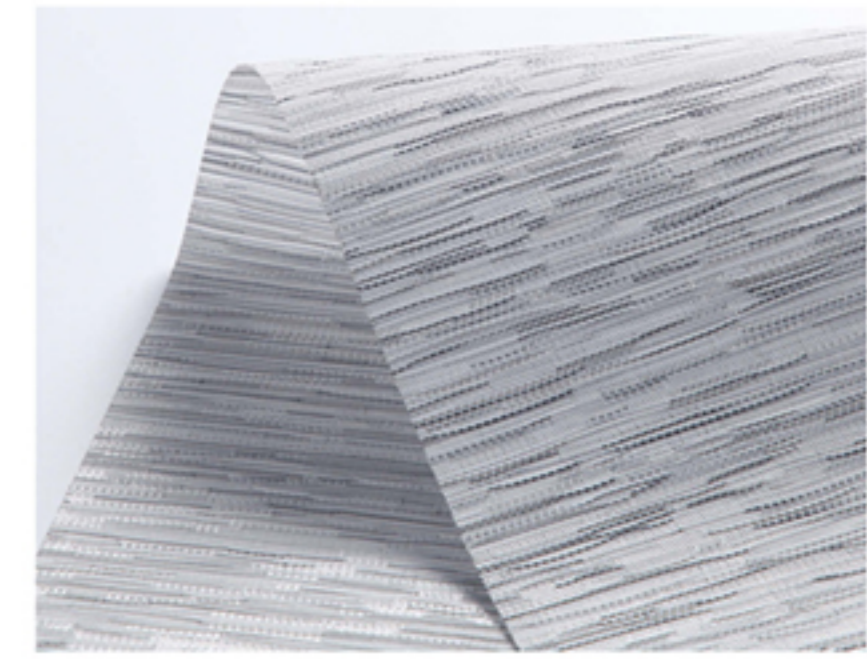
☀ 82082A



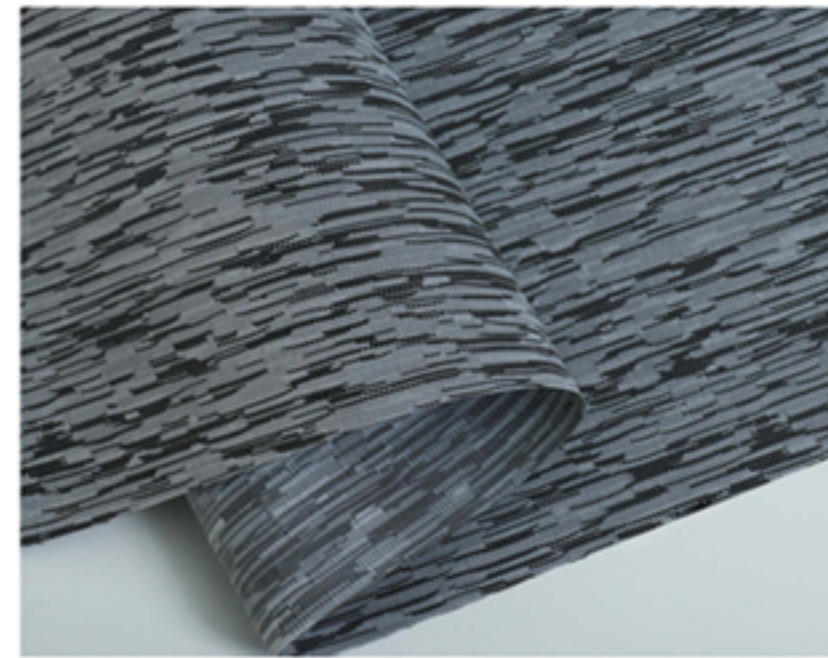
☀ 82082B



☀ 82082C 180g/m²±3%

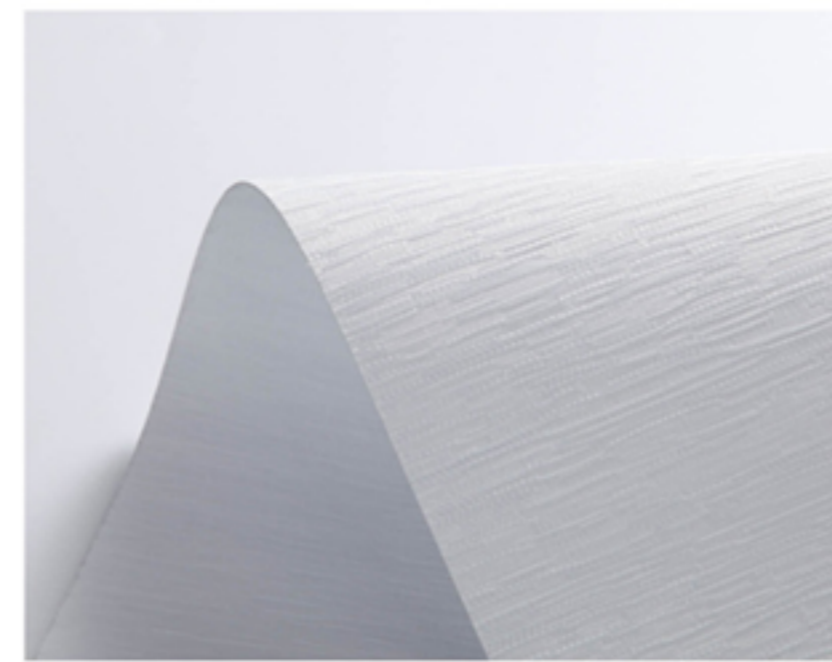


☀ 82082D

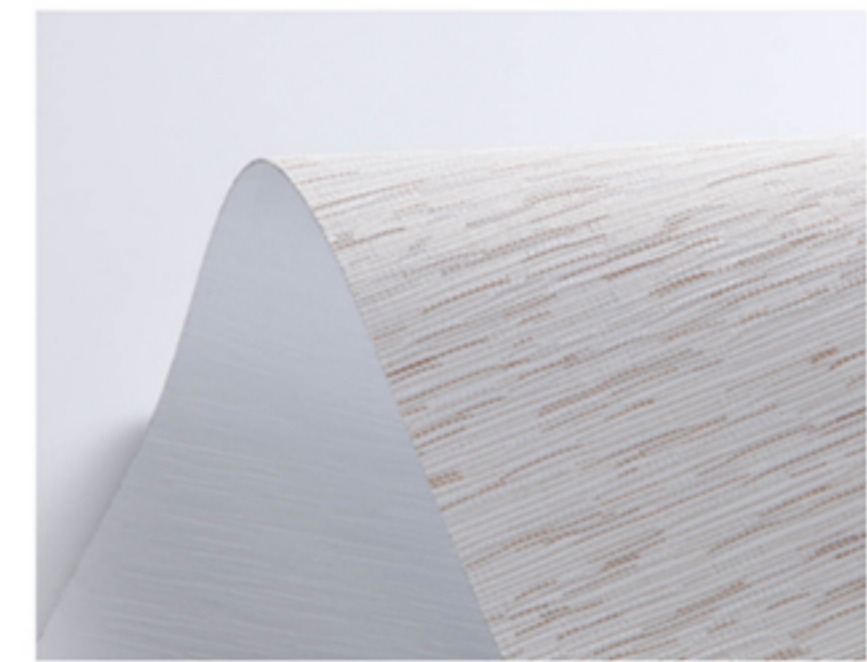


☀ 82082E

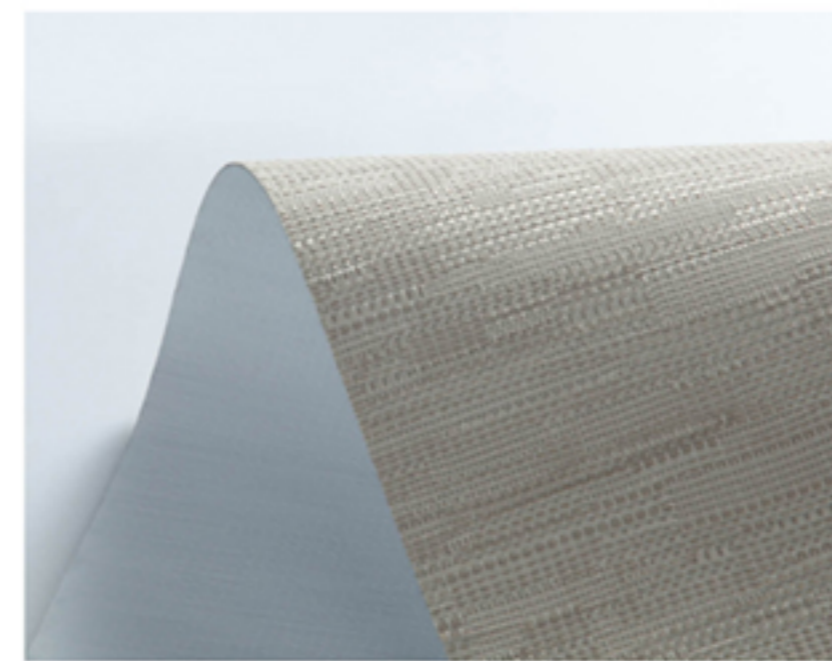
Number	Composition	Max Width	Thickness	Weight	Black Out Rate
82082A	100% Polyester	300cm	0.45mm±0.05%	240g/m ² ±5%	semi blackout



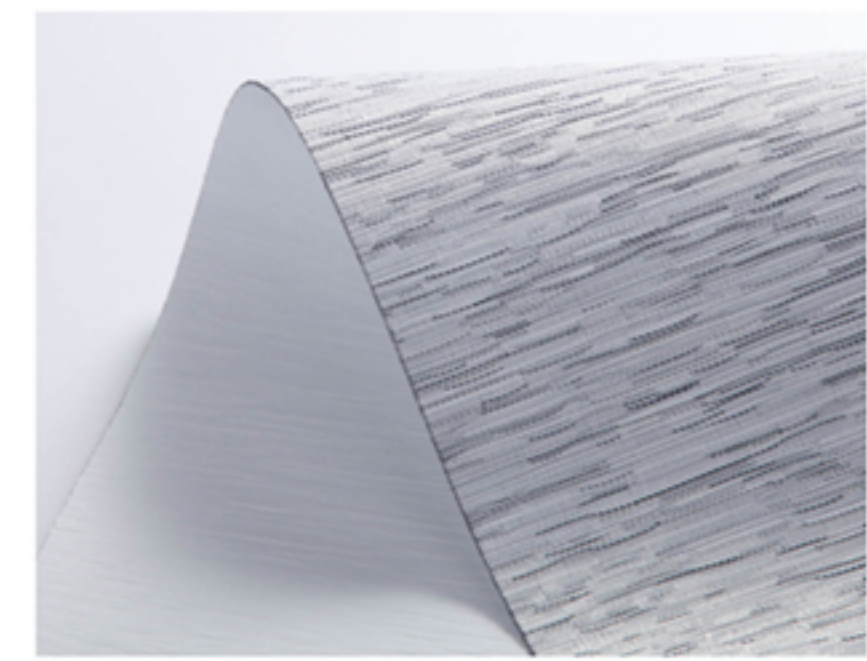
☀️ 82083A



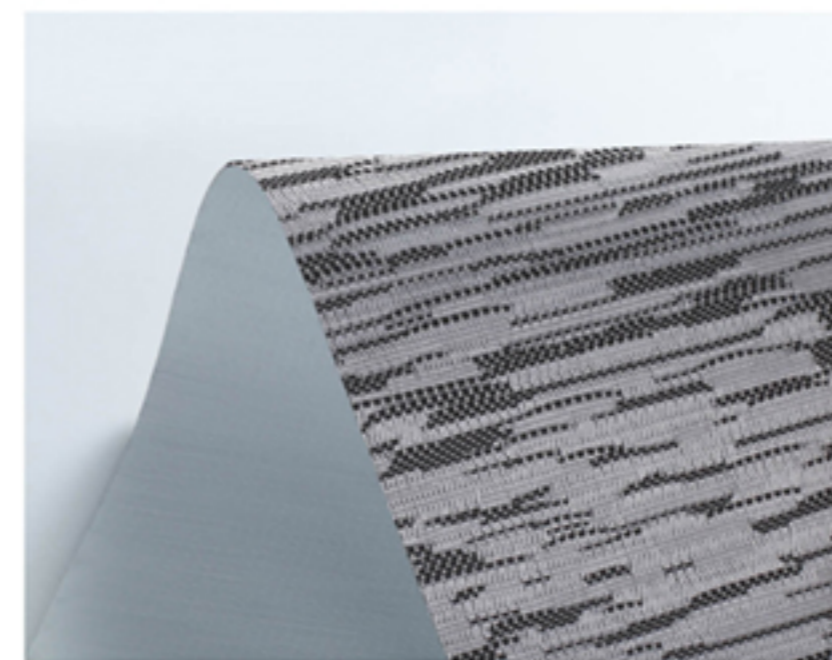
☀️ 82083B



366g/m²±15% ☀️ 82083C



☀️ 82083D

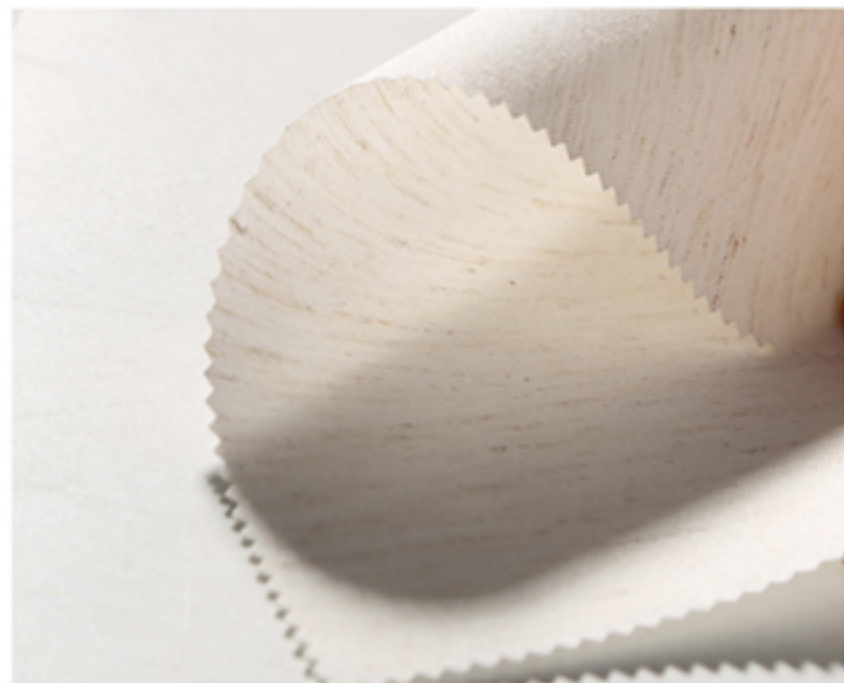


☀️ 82083E

Number	Composition	Max Width	Thickness	Weight	Black Out Rate
82083	100% Polyester	300cm	0.45mm±0.05%	425g/m ² ±15%	blackout



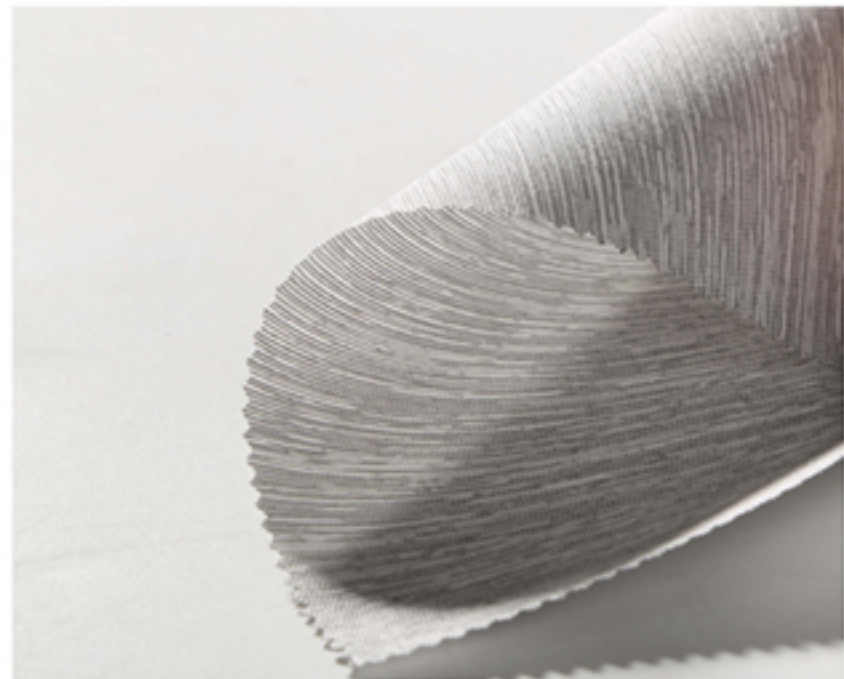
☀ 82067M



☀ 82067N



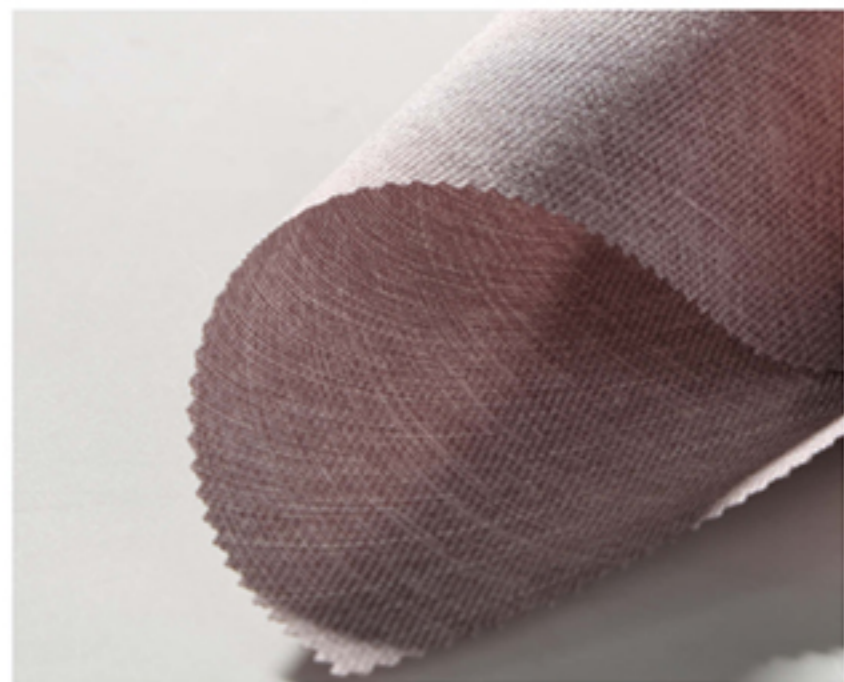
☀ 82067G



☀ 82067H

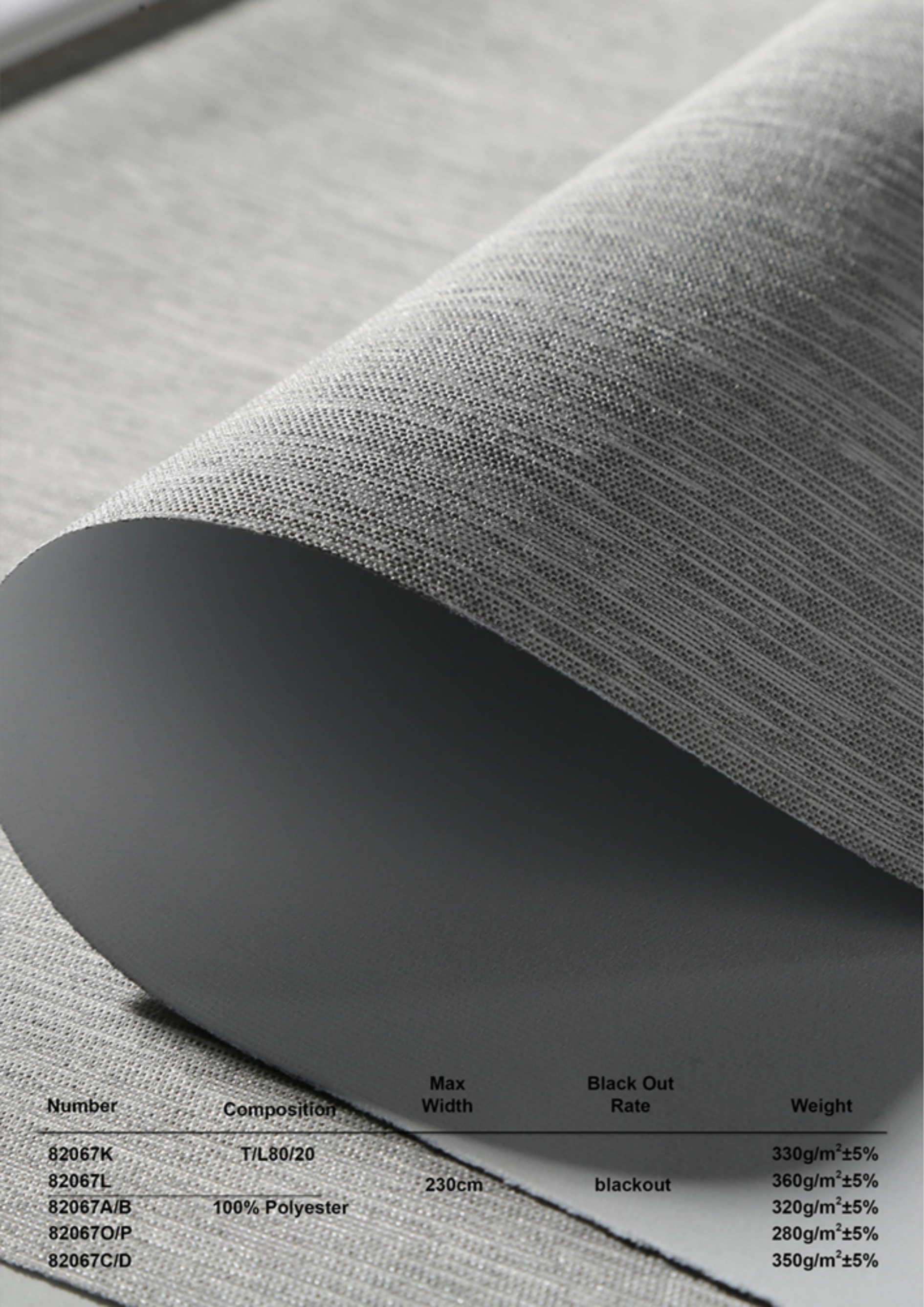


☀ 82067I



☀ 82067J

Number	Composition	Max Width	Thickness	Weight	Black Out Rate
82067M				195g/m ² ±5%	
82067N	T/L80/20	230cm	0.45mm±0.05%	175g/m ² ±5%	semi blackout
82082G/H	100%Polyester			160g/m ² ±3%	
82067I/J				205g/m ² ±5%	



☀ 82067K



☀ 82067L



☀ 82067A



☀ 82067B



☀ 82067C



☀ 82067D

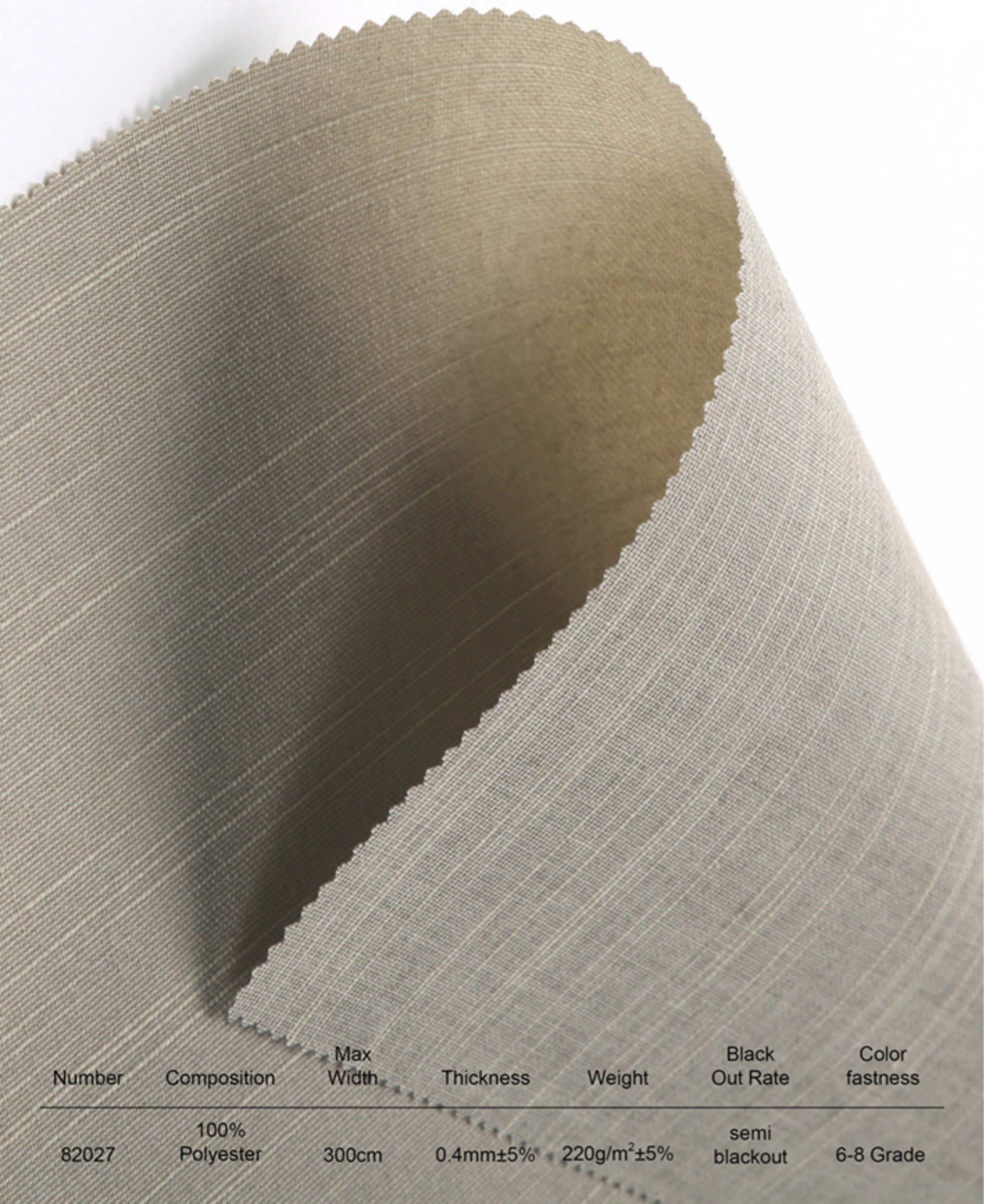


☀ 82067O

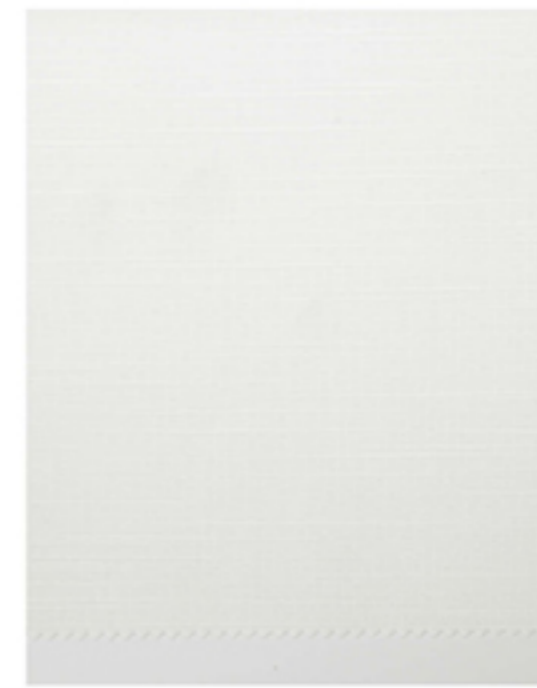


☀ 82067P

Number	Composition	Max Width	Black Out Rate	Weight
82067K	T/L80/20	230cm	blackout	330g/m ² ±5%
82067L				360g/m ² ±5%
82067A/B	100% Polyester			320g/m ² ±5%
82067O/P				280g/m ² ±5%
82067C/D				350g/m ² ±5%



☀ 82027F



☀ 82027G



☀ 82027A



☀ 82027B



☀ 82027C



☀ 82027E



☀ 82027H

Number	Composition	Max Width	Thickness	Weight	Black Out Rate	Color fastness
82027	100% Polyester	300cm	0.4mm±5%	220g/m ² ±5%	semi blackout	6-8 Grade



☀ 82028F



☀ 82028G



☀ 82028H



☀ 82028A



☀ 82028B

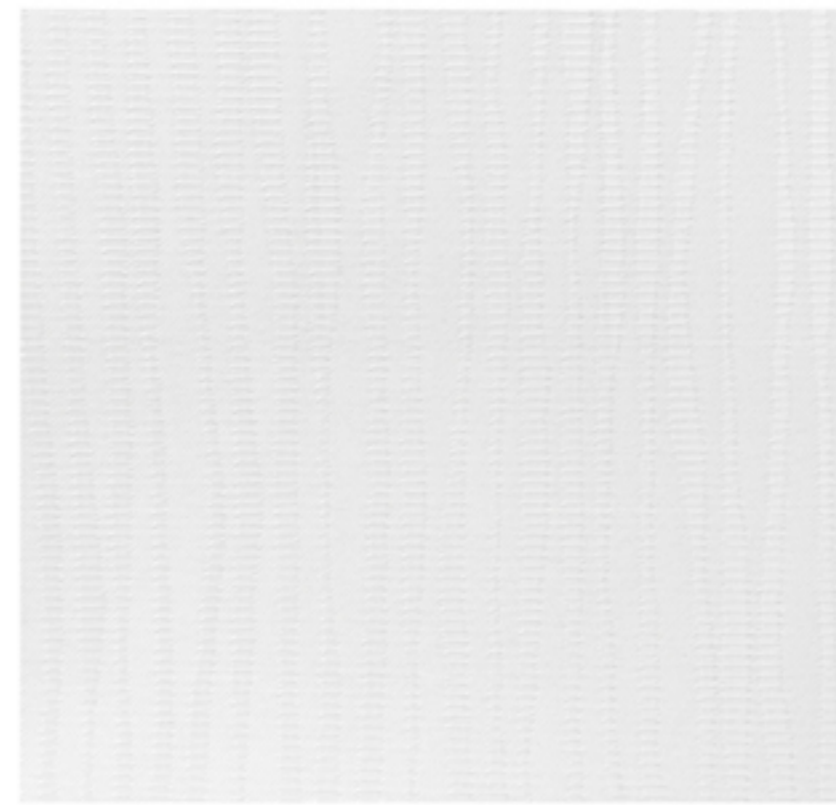
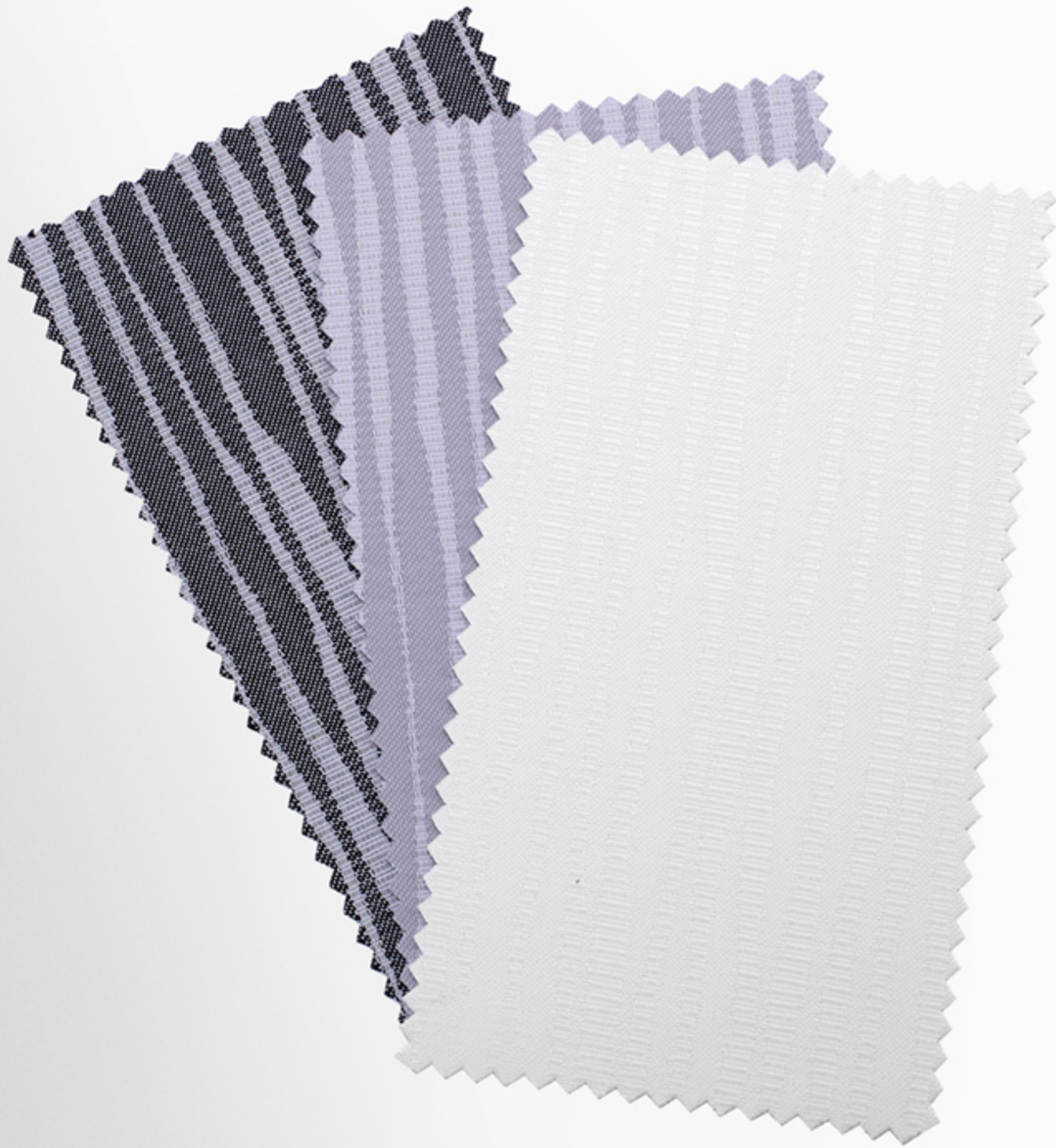


☀ 82028C

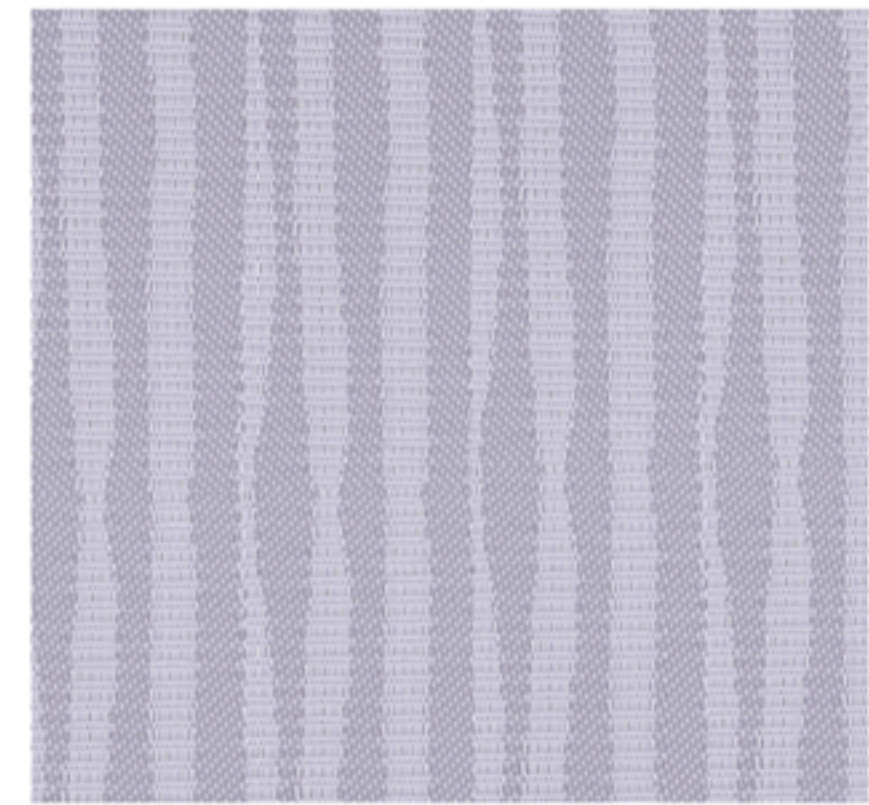


☀ 82028E

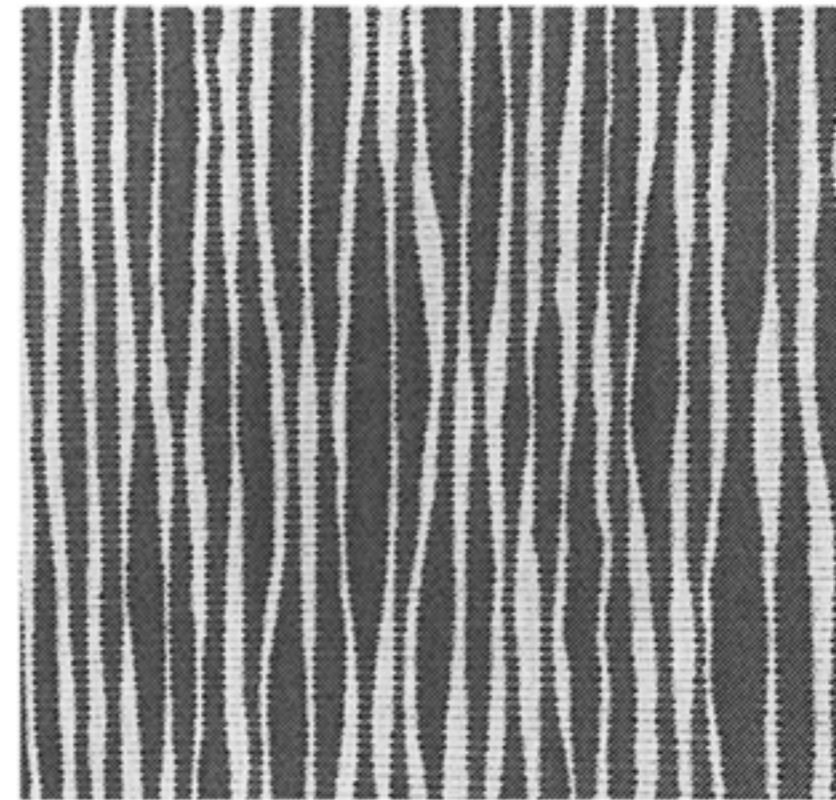
Number	Composition	Max Width	Thickness	Weight	Black Out Rate	Color fastness
82028	100% Polyester	300cm	0.5mm±5%	330g/m ² ±5%	blackout	6-8 Grade



☀️ 82029F



☀️ 82029G

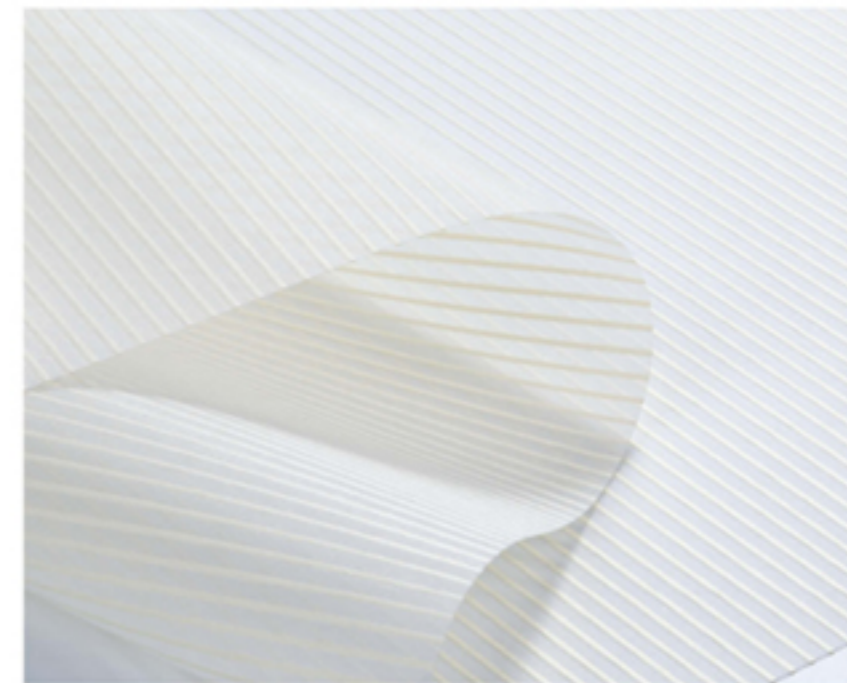


☀️ 82029H

Number	Composition	Max Width	Thickness	Weight	Black Out Rate	Color fastness
82029	100% Polyester	300cm	0.5mm±5%	320g/m ² ±5%	blackout	6-8 Grade



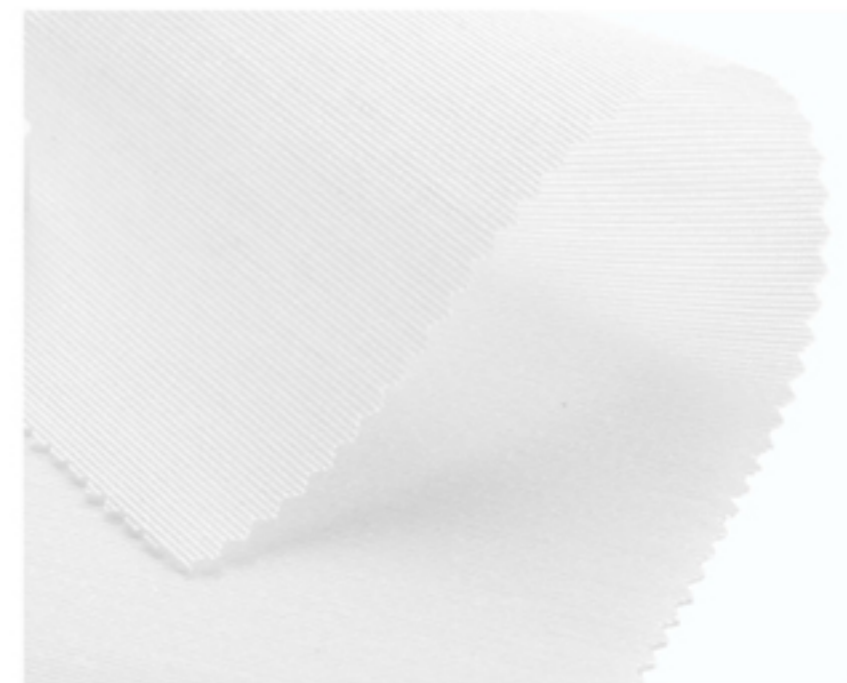
☀ 82072C



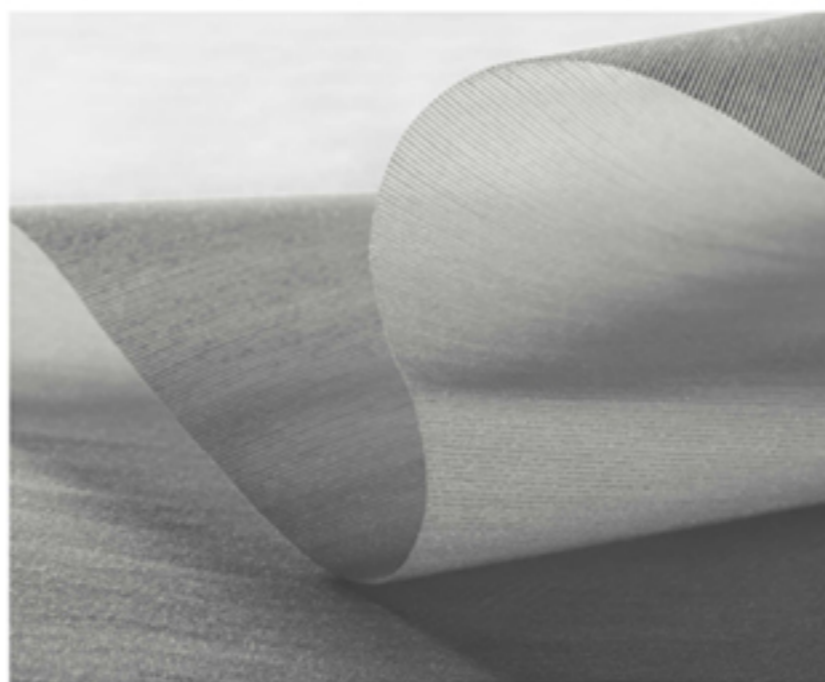
☀ 82072D



☀ 82072E



☀ 82067E

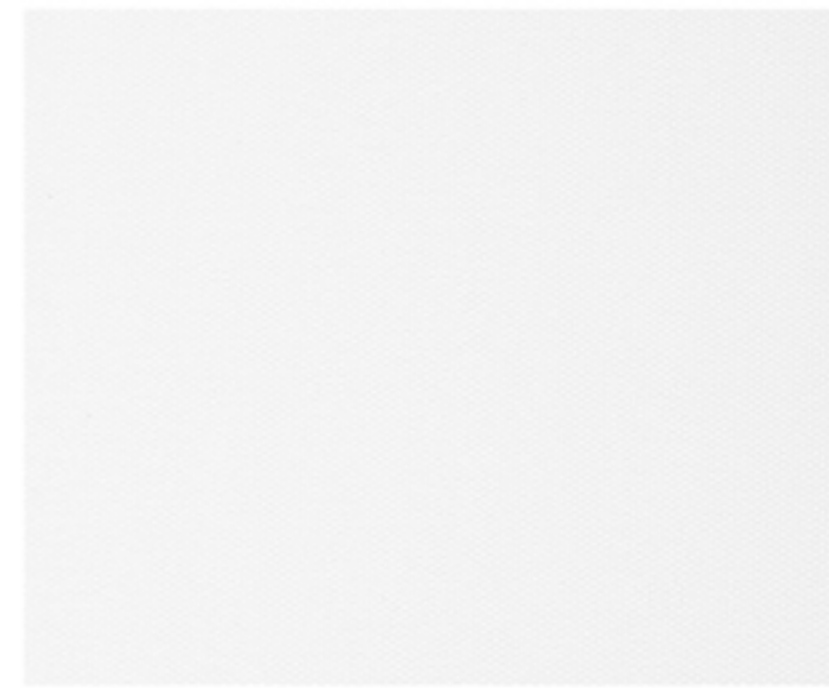


☀ 82067F

Number	Max Width	Composition	Thickness	Weight	Black Out Rate
82072C/D				120g/m ² ±5%	
82067E/F	300cm	100% Polyester	0.5mm±5%	300g/m ² ±5%	semi blackout
82072E	230cm	T/L70/30		230g/m ² ±5%	

Semi-Blackout

Number	Composition	Max Width	Weight	Black Out Rate
82086	100%Polyester	230cm	190g/m ² ±5%	semi blackout



 82086W

 82086F



 82086B

 82086G

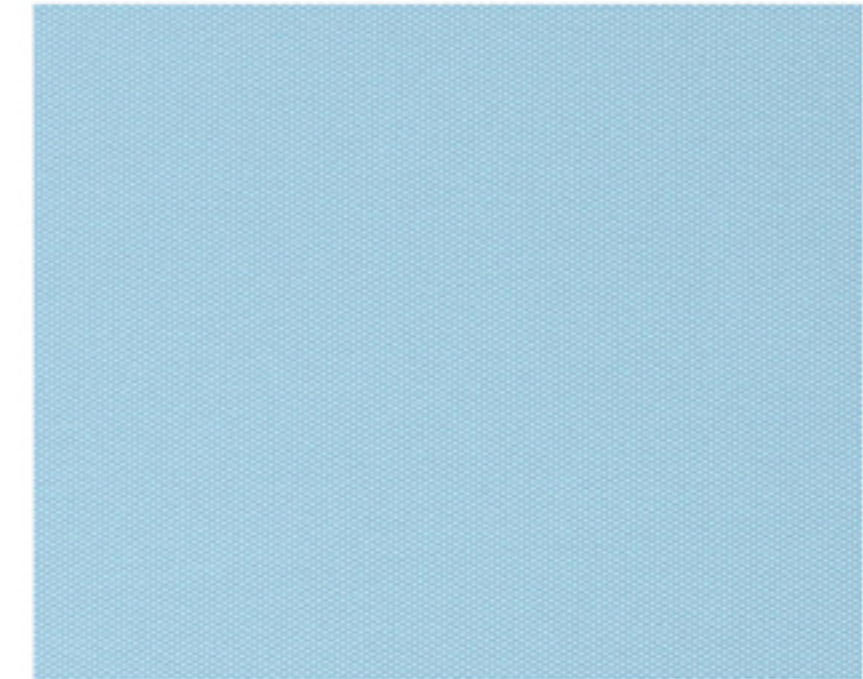
Blackout

Number	Composition	Max Width	Weight	Black Out Rate
82086	100%Polyester	230cm	330g/m ² ±15%	blackout



 82086C

 82086H



 82086D

 82086I



 82086E

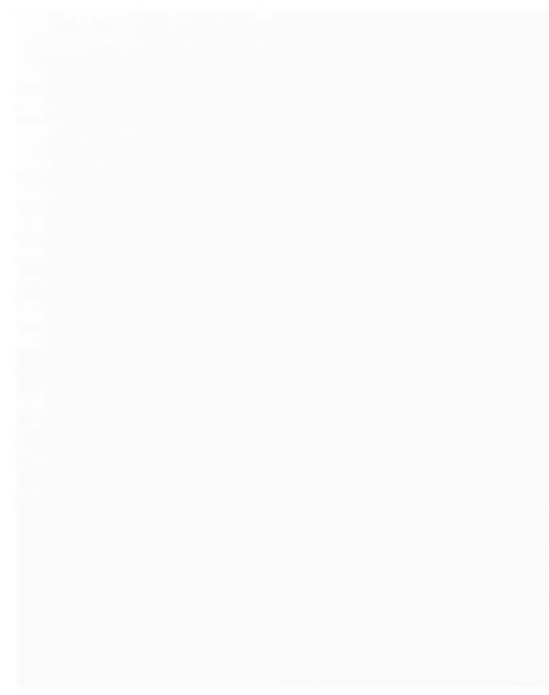
 82086J



☀ 82010J



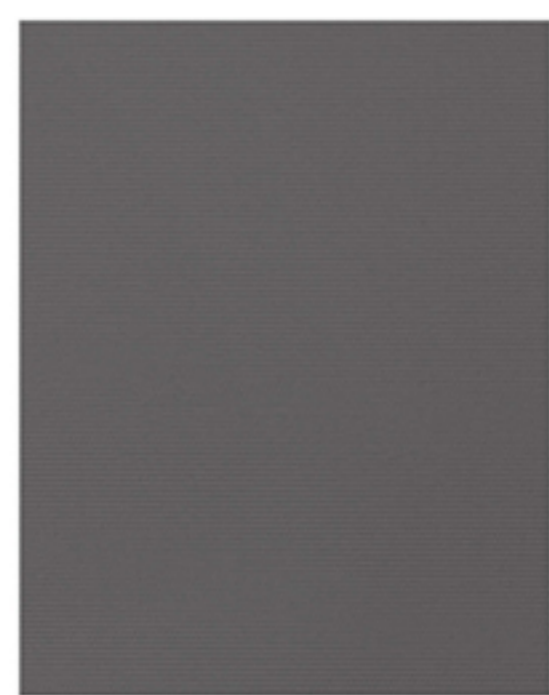
☀ 82010T



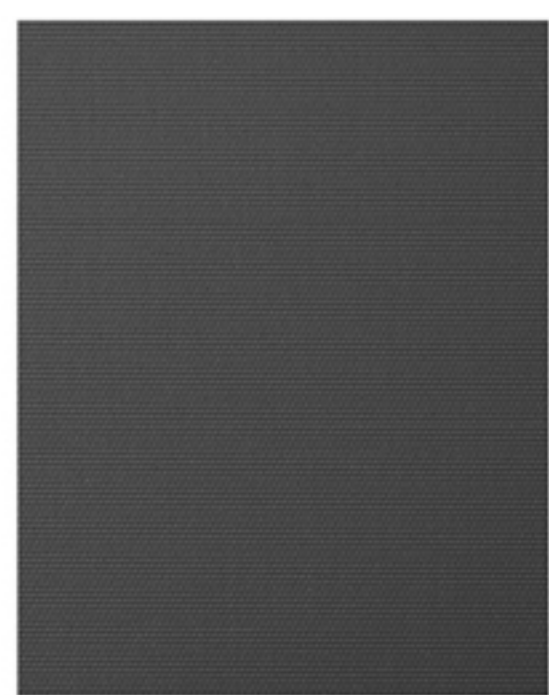
☀ 82010G



☀ 82010L



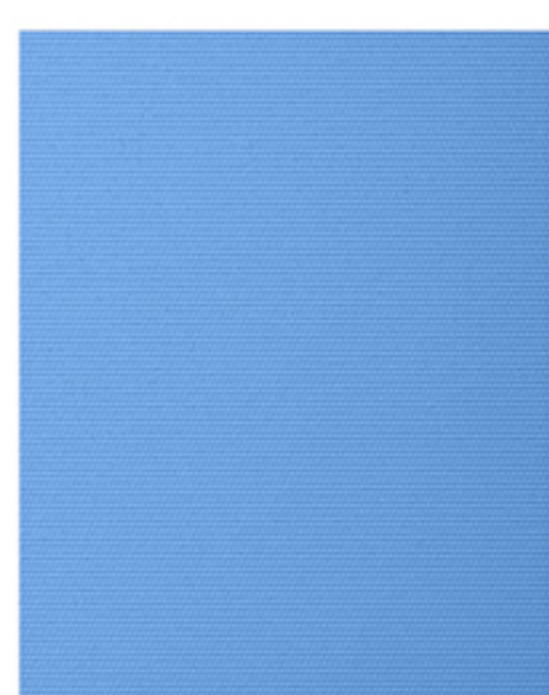
☀ 82010I



☀ 82010M

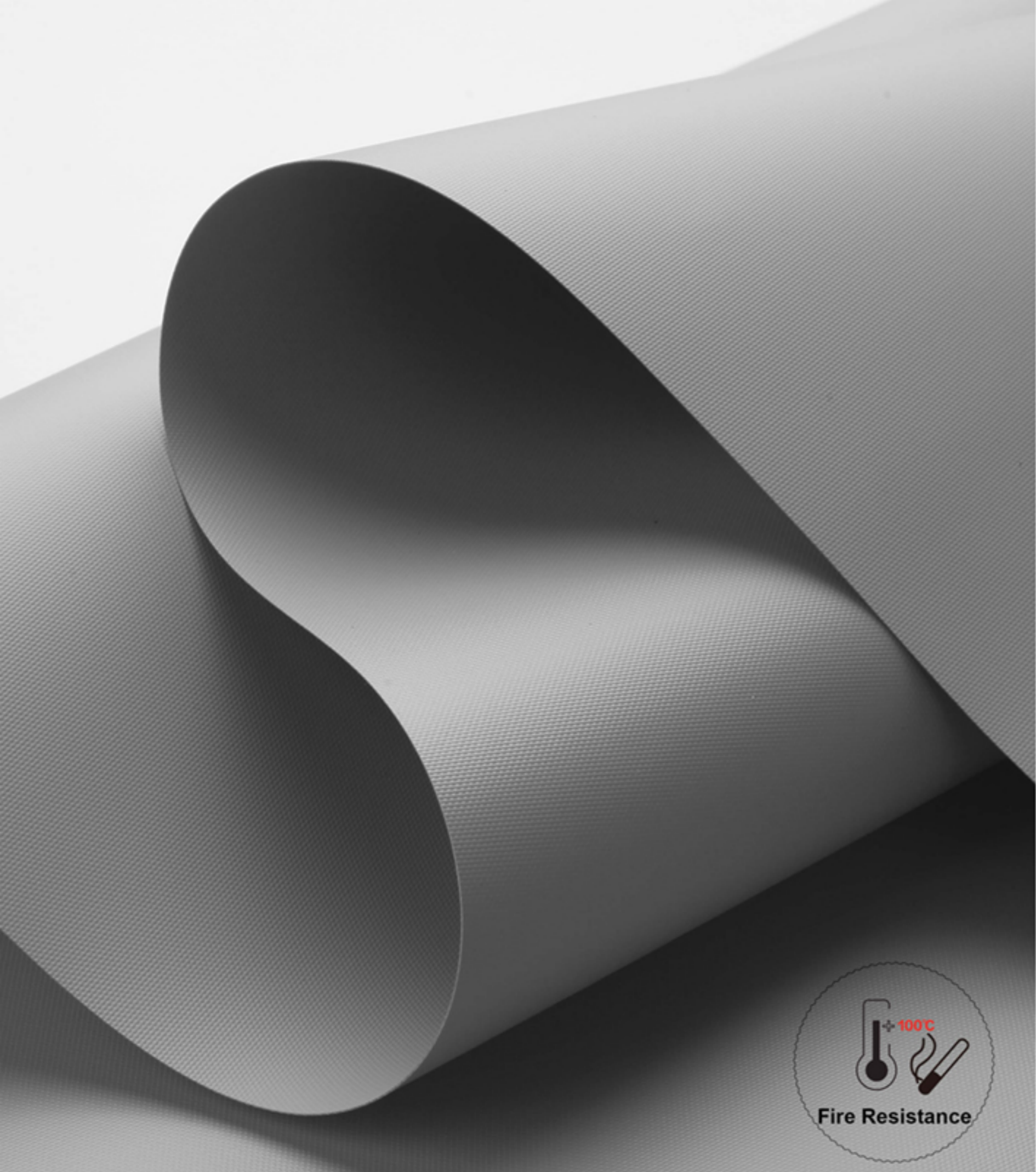


☀ 82010S



☀ 82010W

Number	Composition	Max Width	Thickness	Weight	Black Out Rate
82010	100% Polyester	300cm	0.3mm±0.05%	310g/m ² ±10%	blackout



Number	Composition	Max Width	Thickness	Weight	Black Out Rate	Color fastness
82026	40% Fiberglass + 60% PVC	200/250/300cm	0.38mm±5%	480g/m ² ±5%	blackout	6-8 Grade



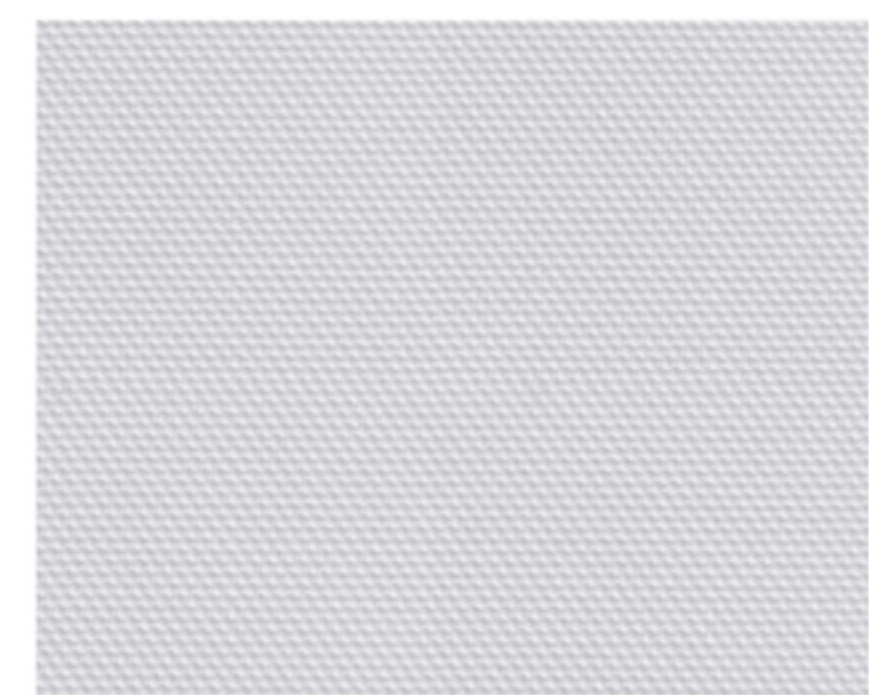
☀ 82026A



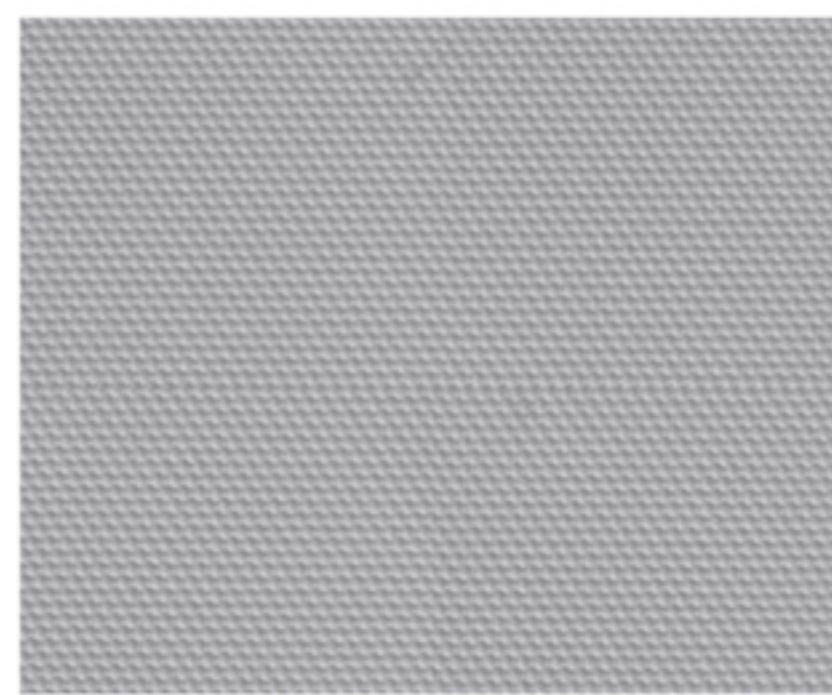
☀ 82026B



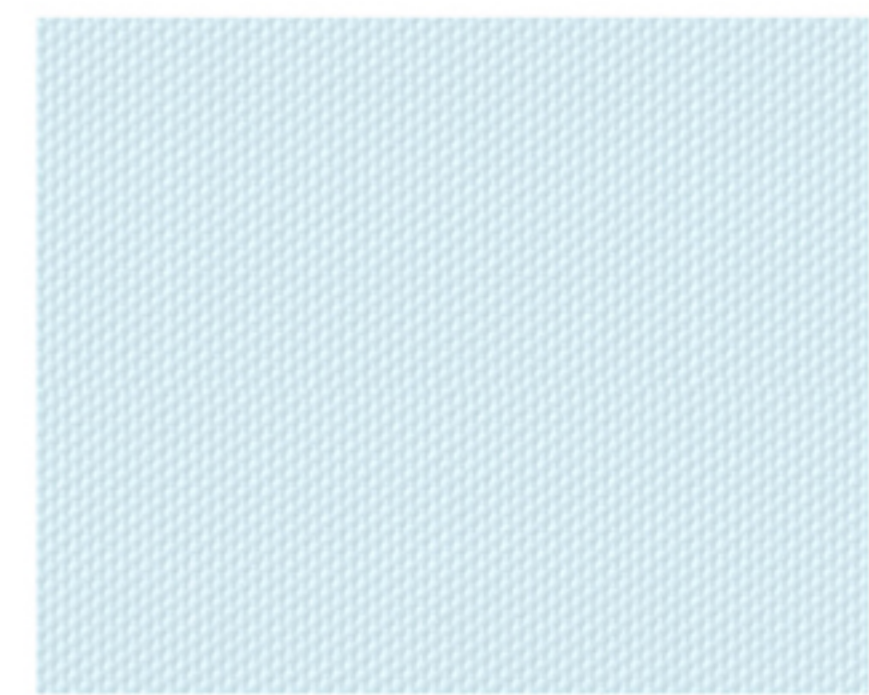
☀ 82026C



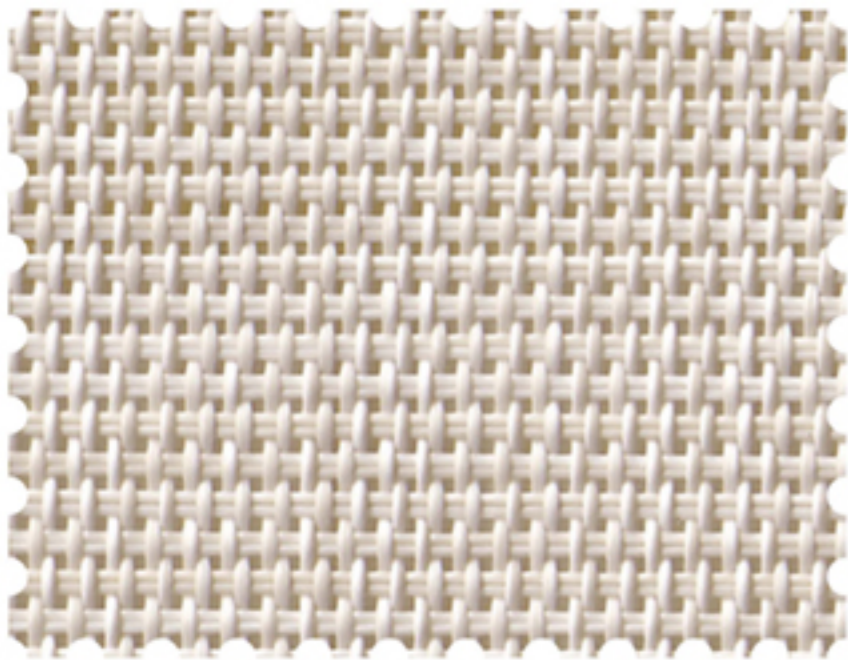
☀ 82026E



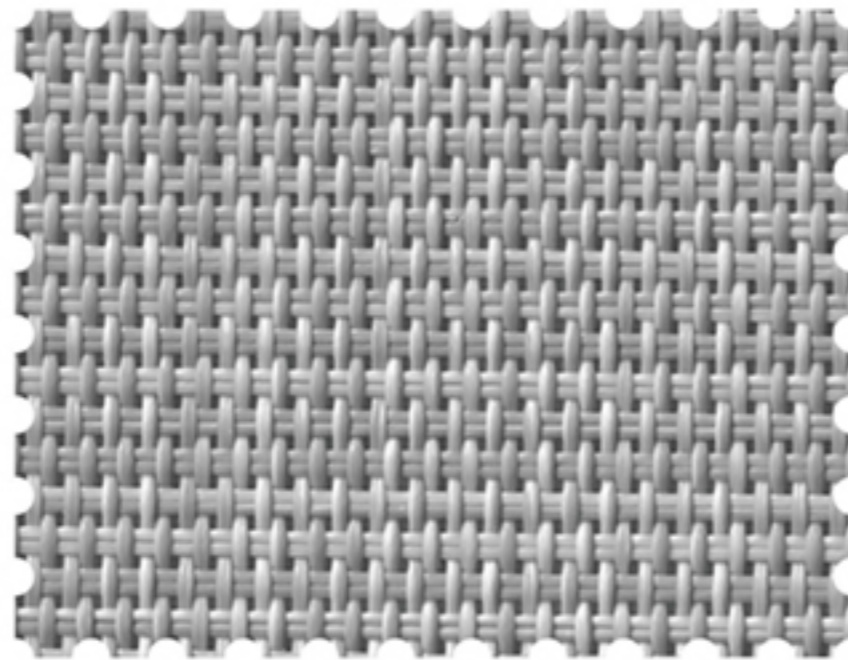
☀ 82026F



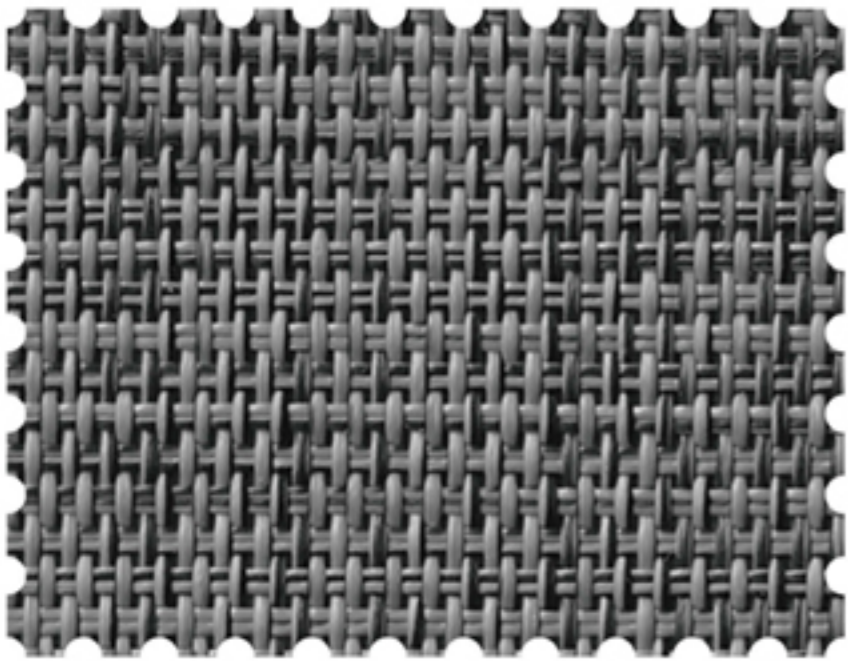
☀ 82026G



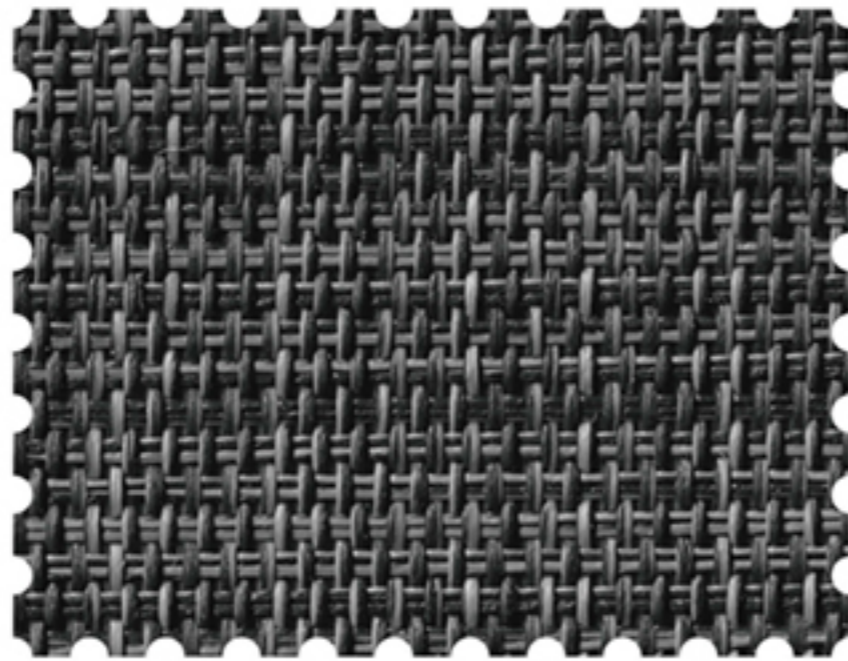
82088F



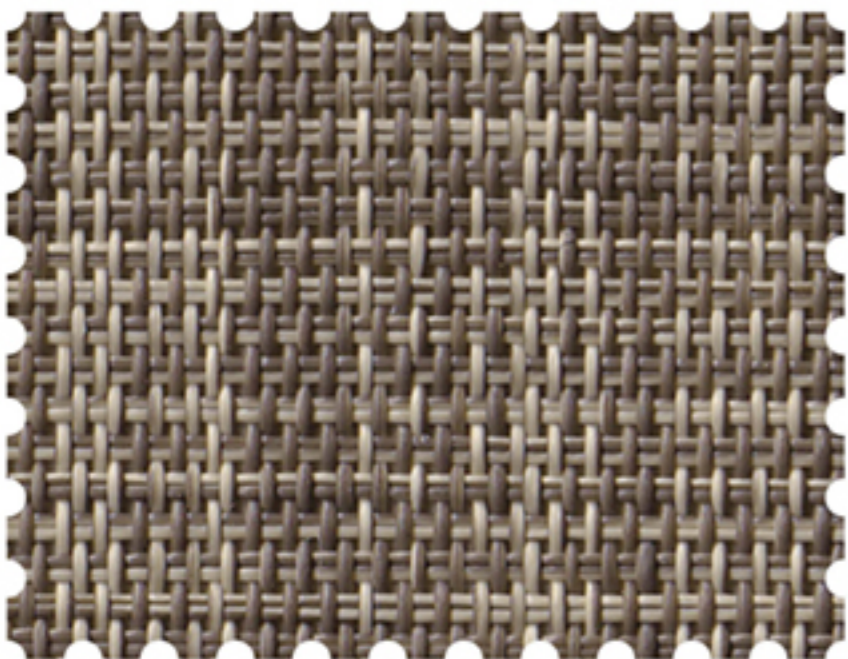
82088G



82088H



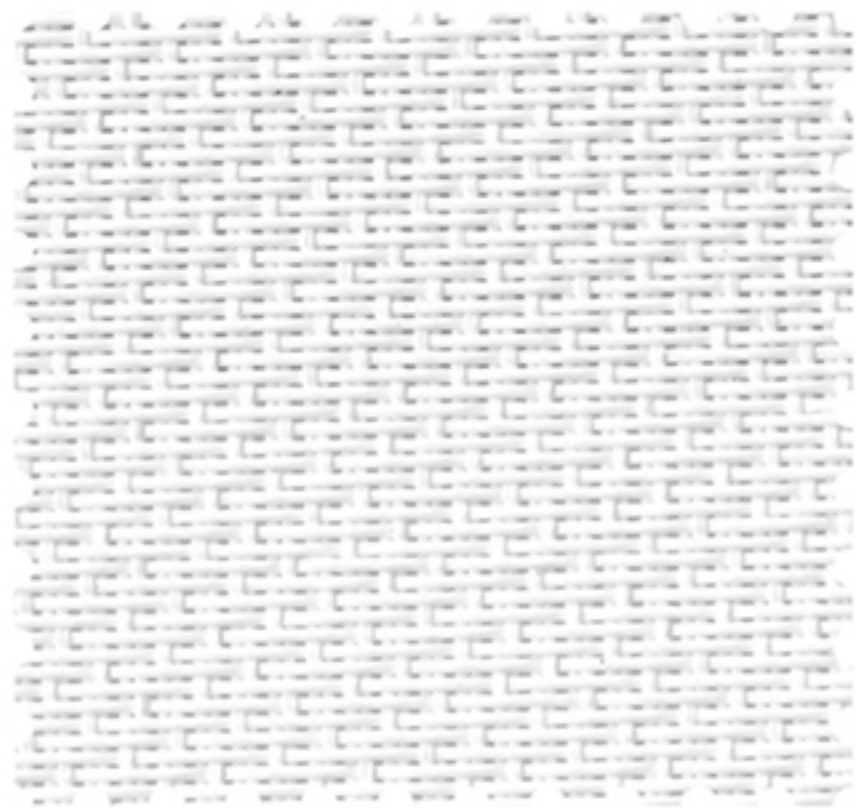
82088I



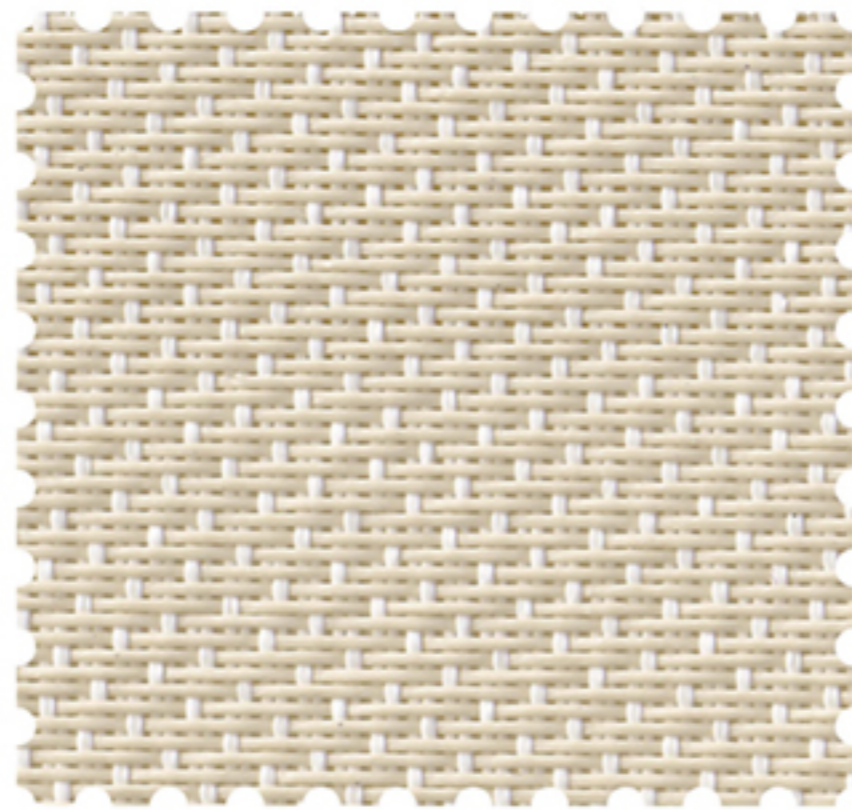
82088J



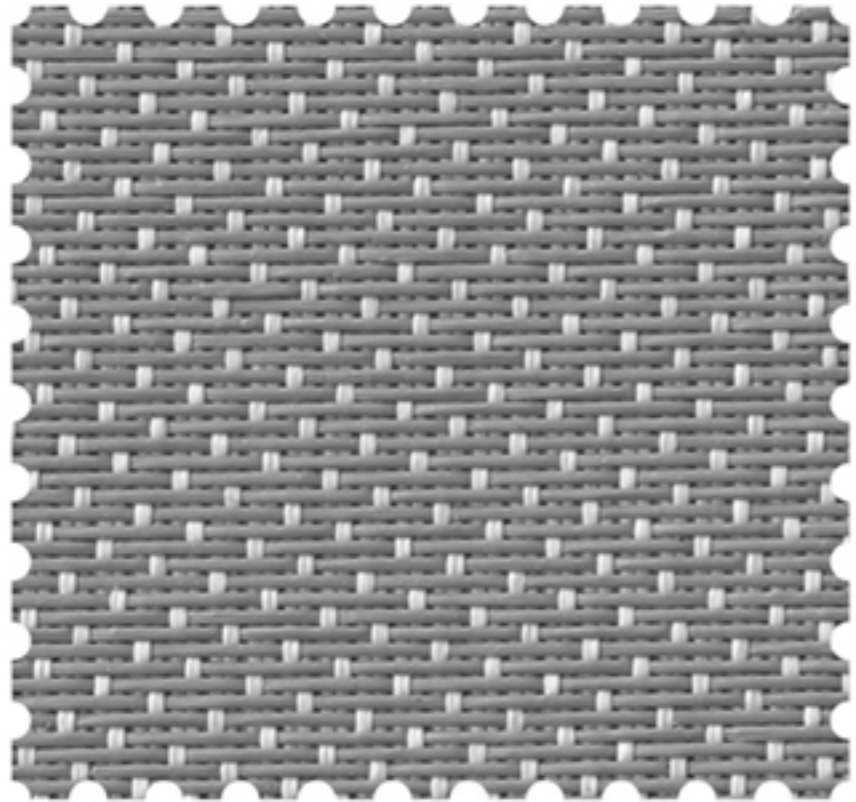
Number	Composition	Max Width	Thickness	Weight	5% openness factor
82088	30% Polyester + 70% PVC	300 cm	0.73mm ± 5%	428g/m ² ± 5%	



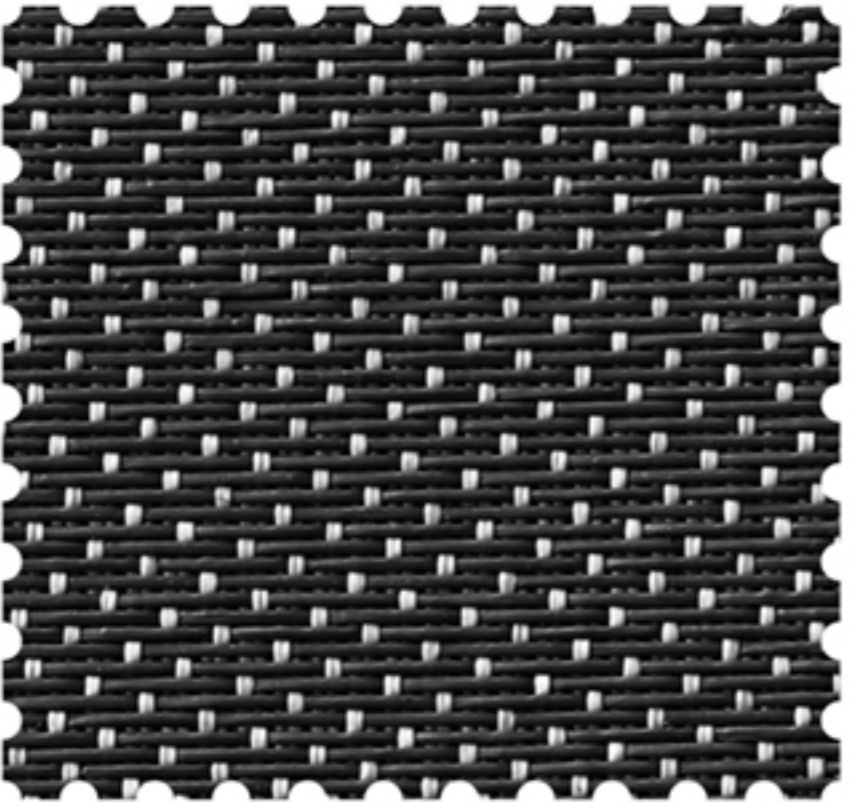
82025A



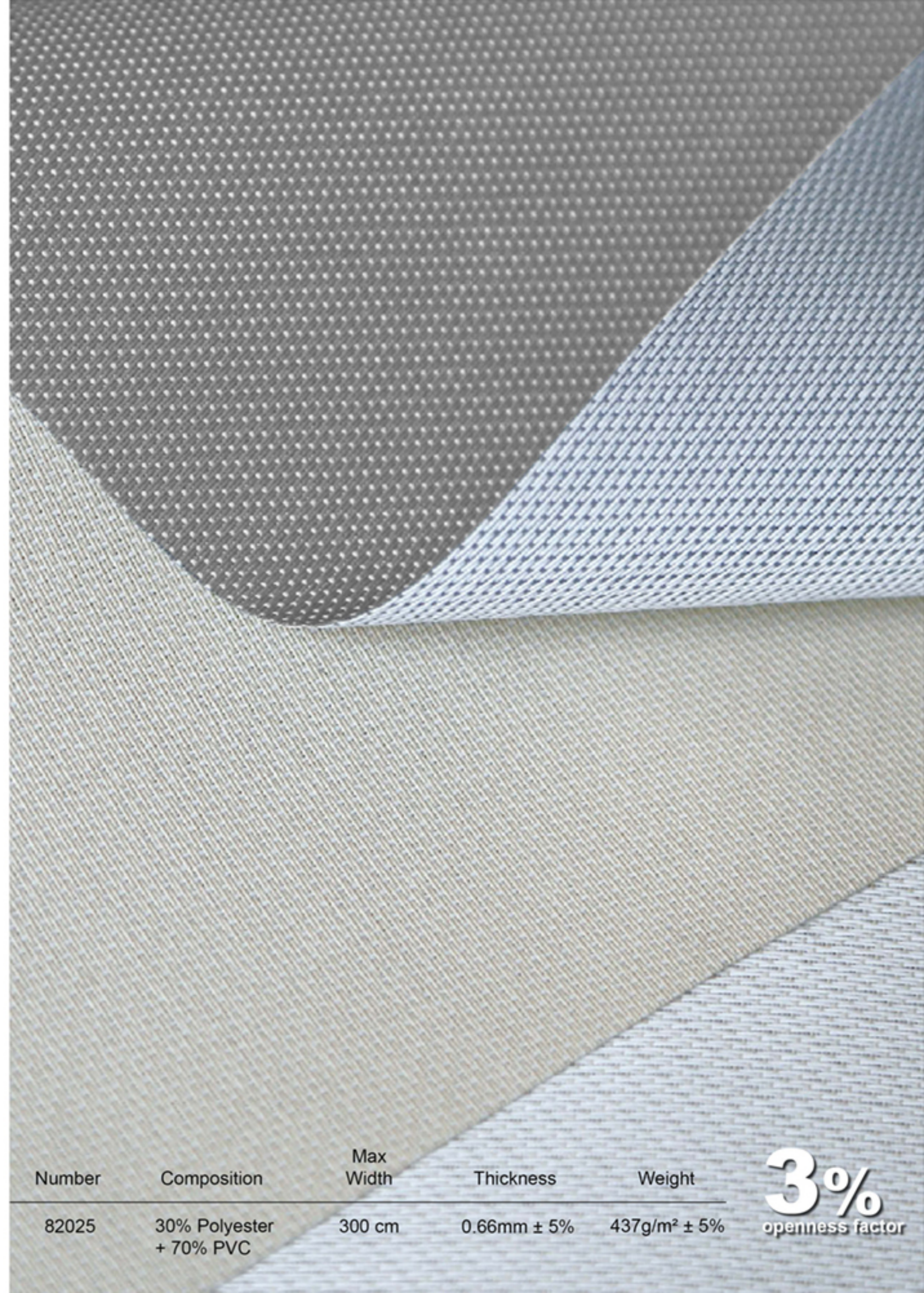
82025B



82025C

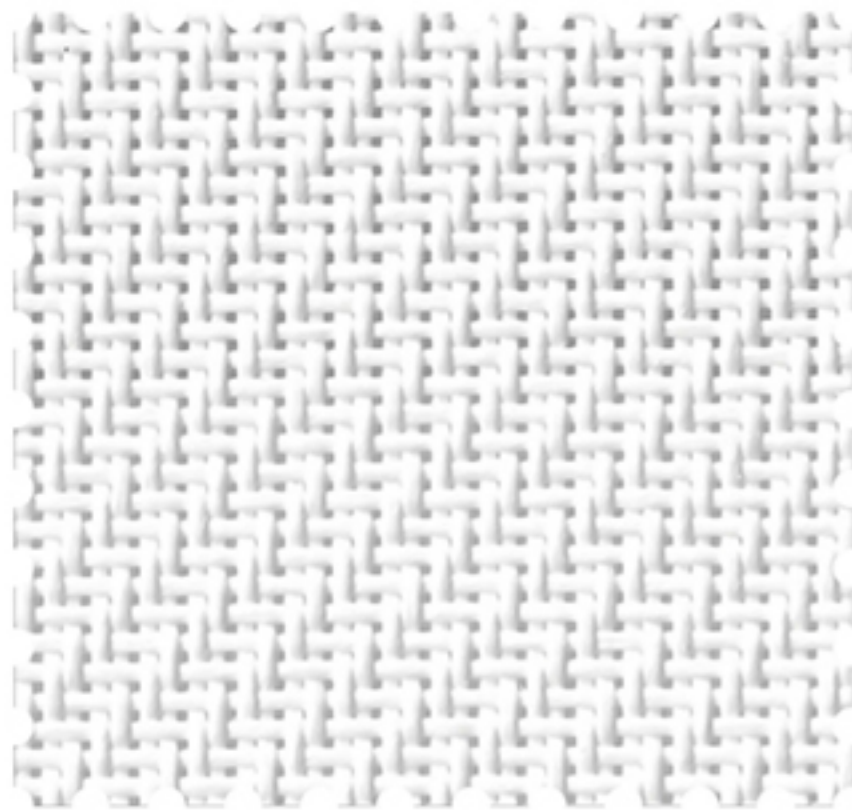


82025E

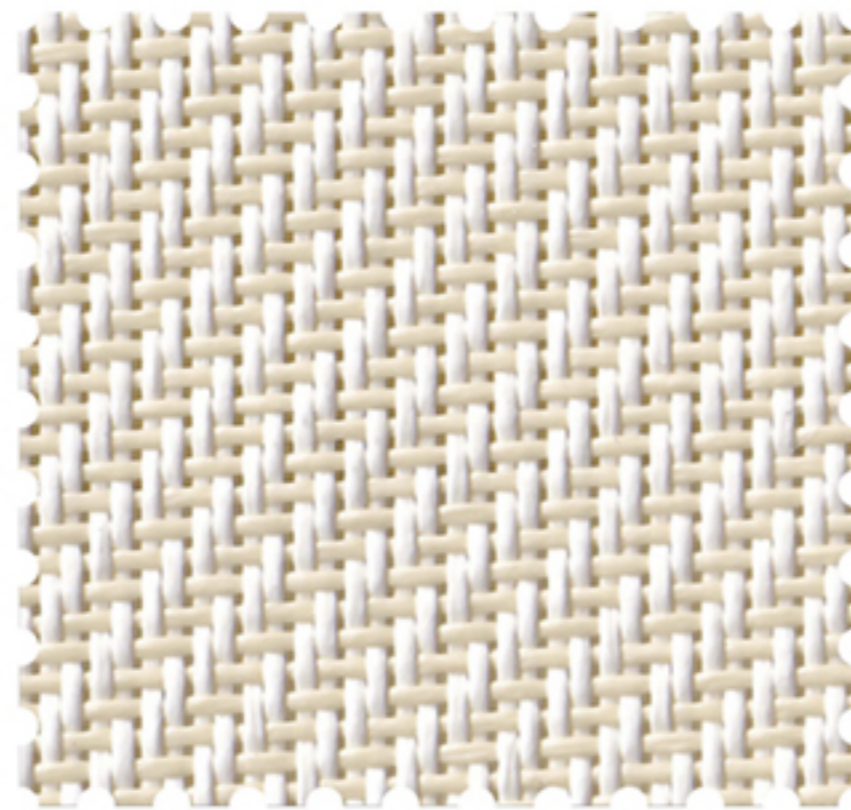


Number	Composition	Max Width	Thickness	Weight
82025	30% Polyester + 70% PVC	300 cm	0.66mm ± 5%	437g/m ² ± 5%

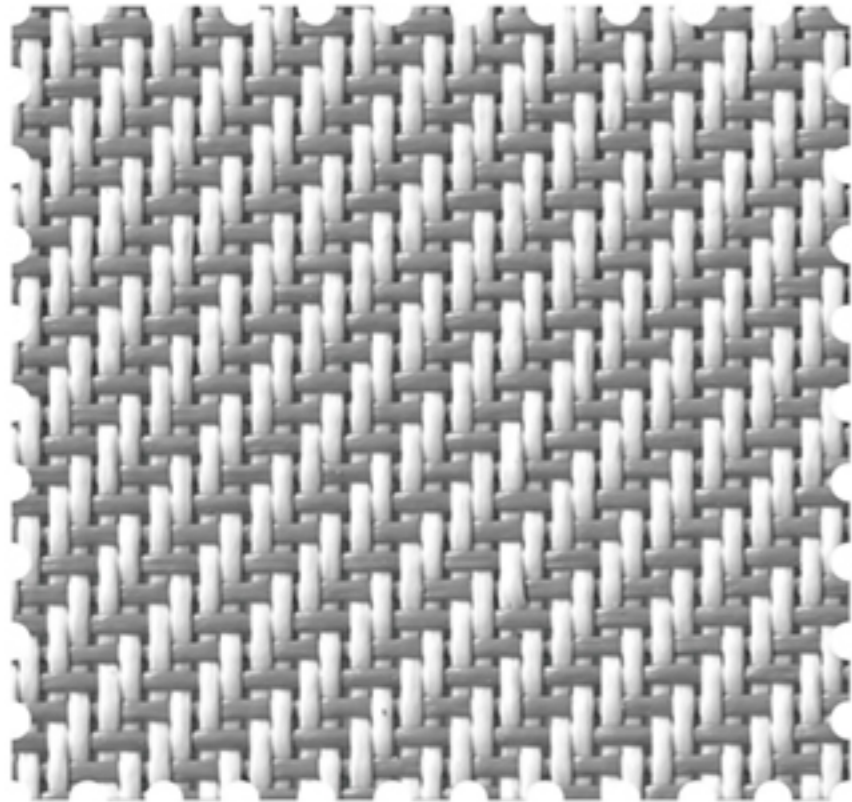
3%
openness factor



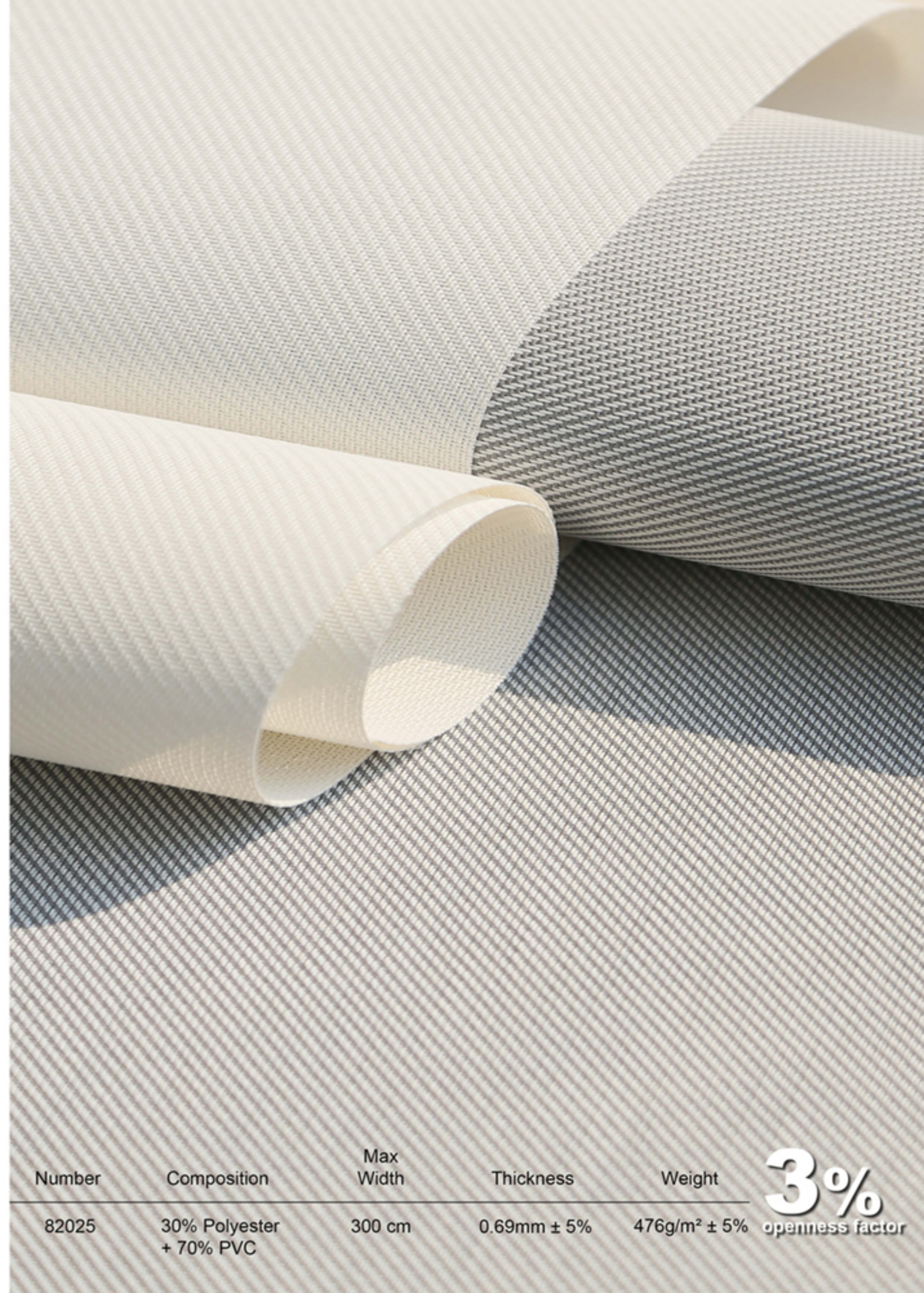
82025F



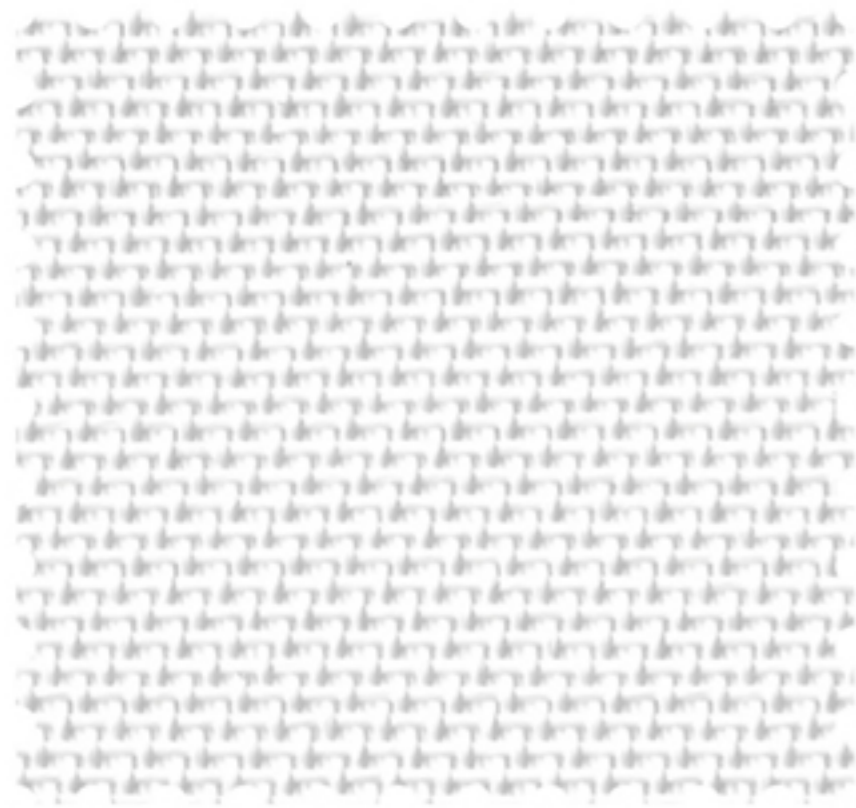
82025G



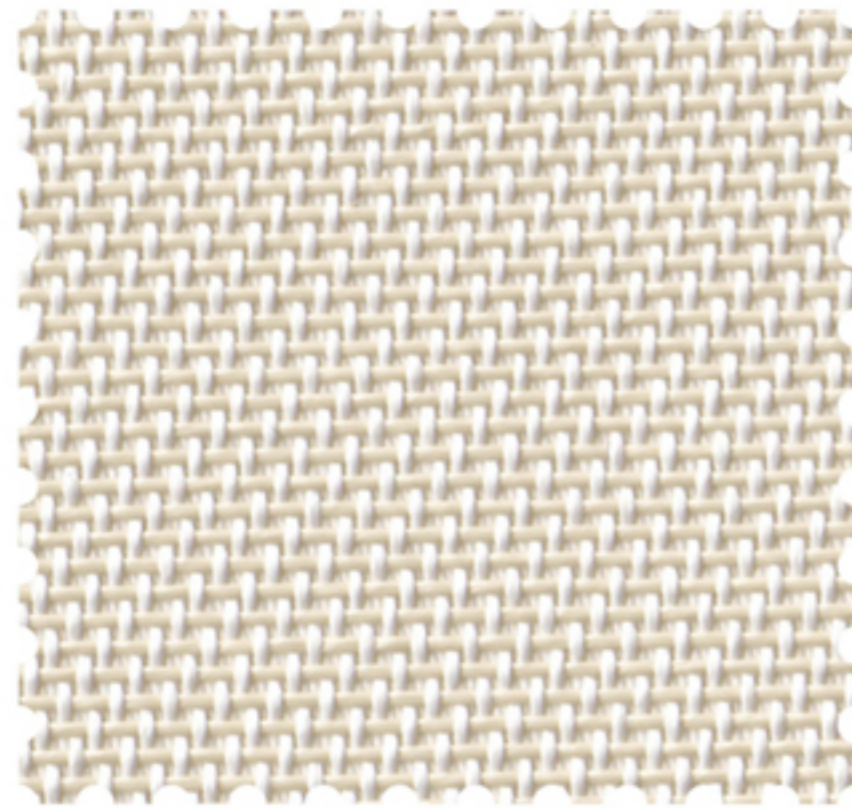
82025H



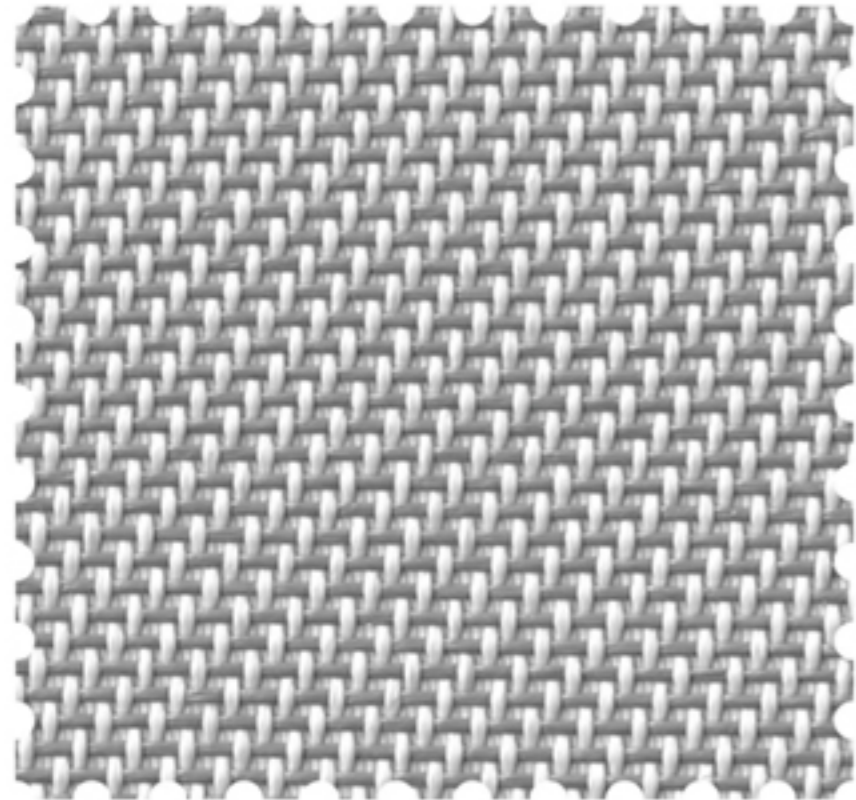
Number	Composition	Max Width	Thickness	Weight	3% openness factor
82025	30% Polyester + 70% PVC	300 cm	0.69mm ± 5%	476g/m ² ± 5%	



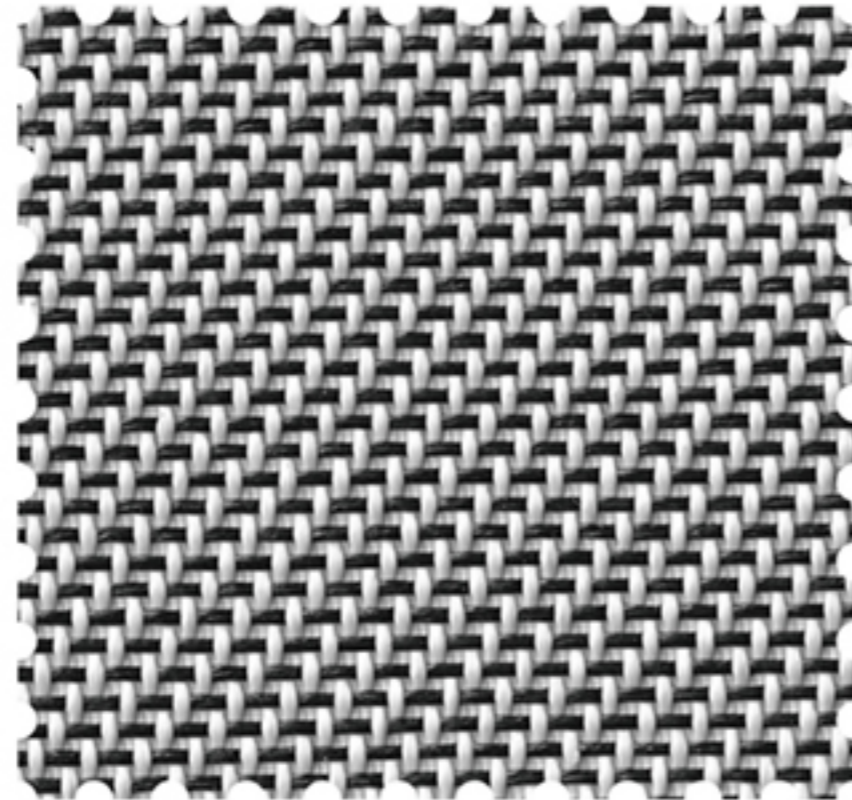
82024A



82024B



82024C

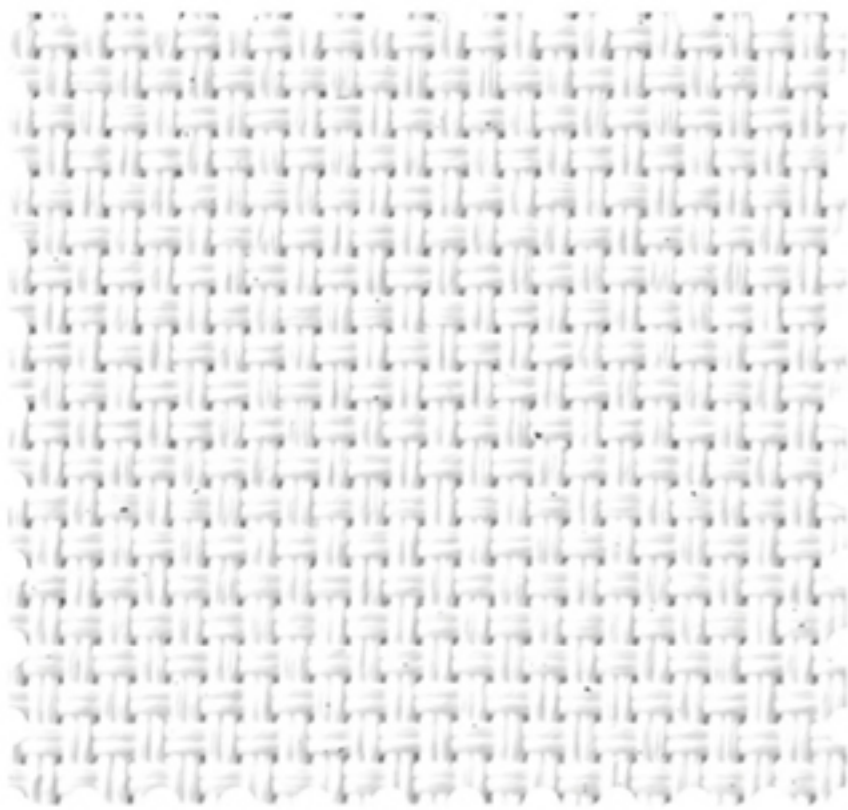


82024E

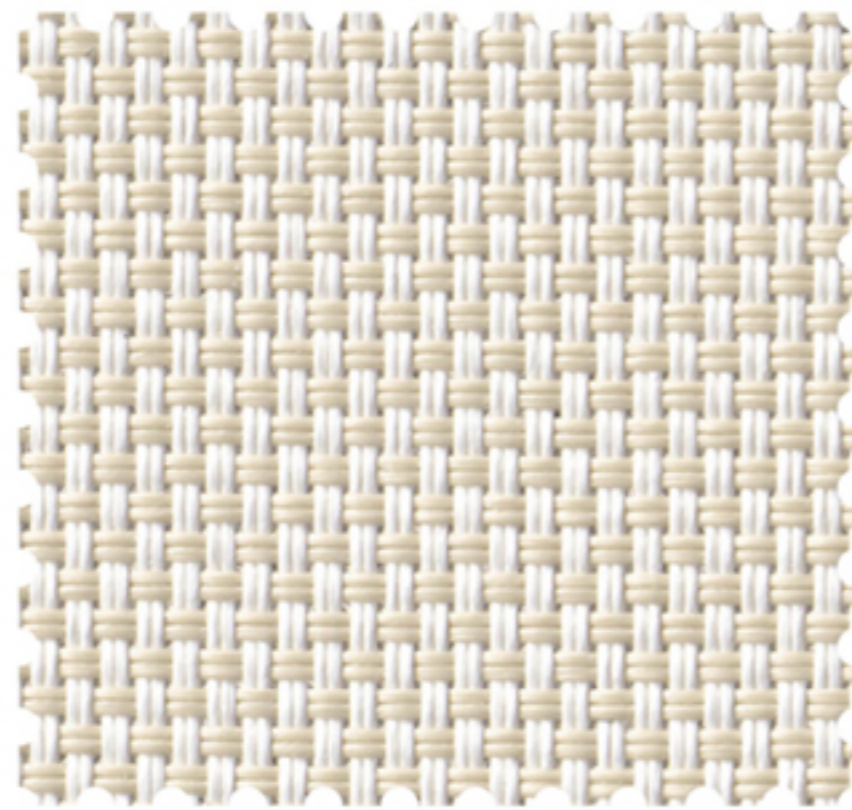


Number	Composition	Max Width	Thickness	Weight
82024	30% Polyester + 70% PVC	300 cm	0.73mm ± 5%	525g/m ² ± 5%

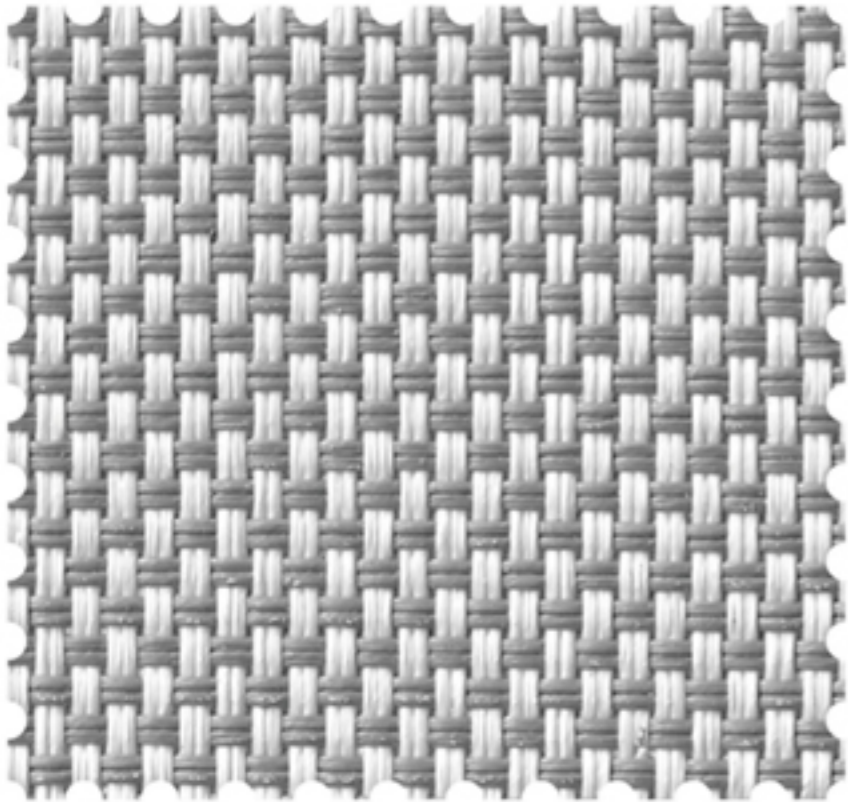
1%
openness factor



82006G



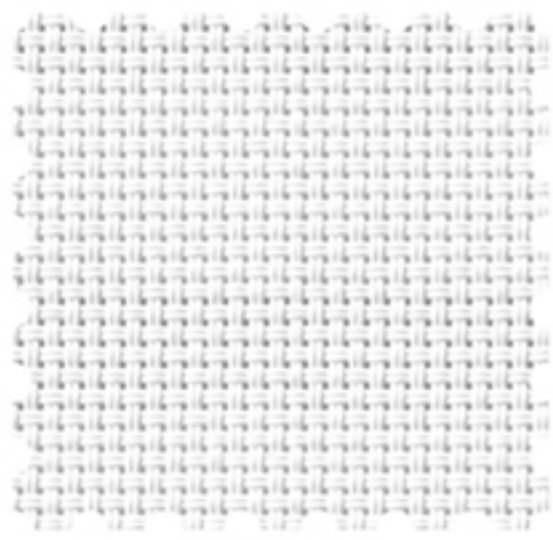
82006D



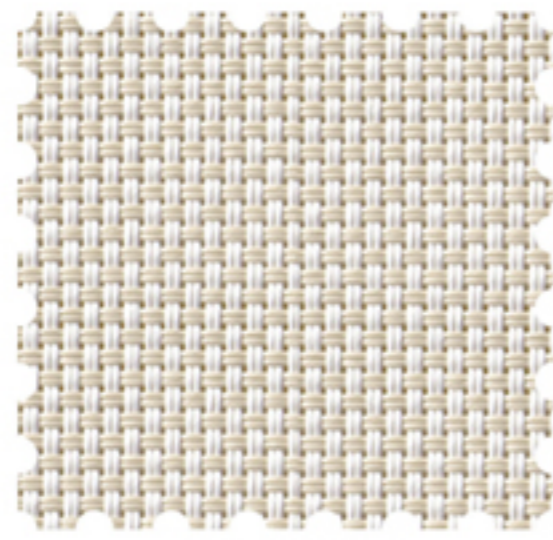
82006E



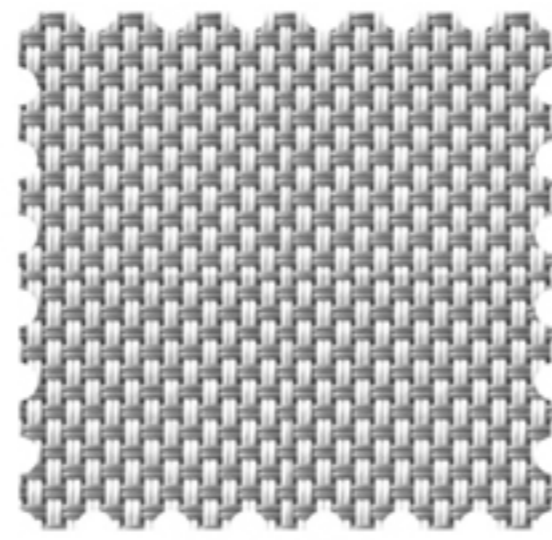
Number	Composition	Max Width	Thickness	Weight	Black Out Rate	0% openness factor
82006	30% Polyester + 70% PVC	300 cm	0.84mm ± 5%	663g/m ² ± 5%	blackout	



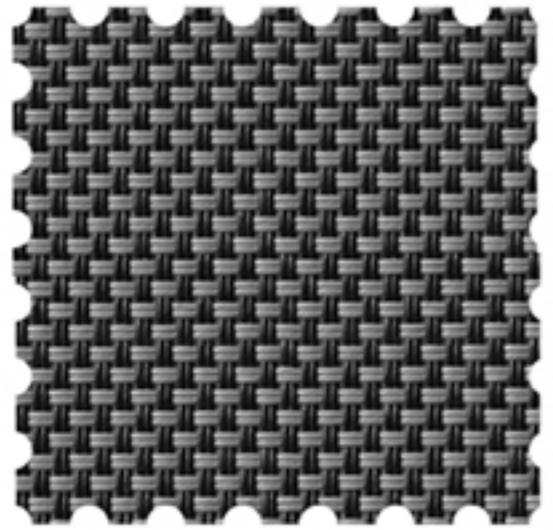
82006A



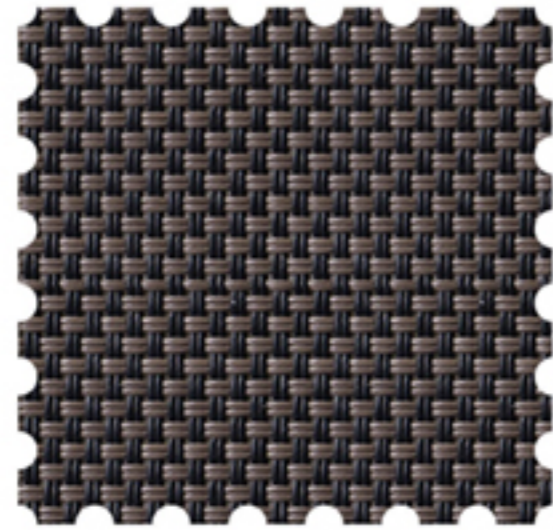
82006B



82006C



82006L



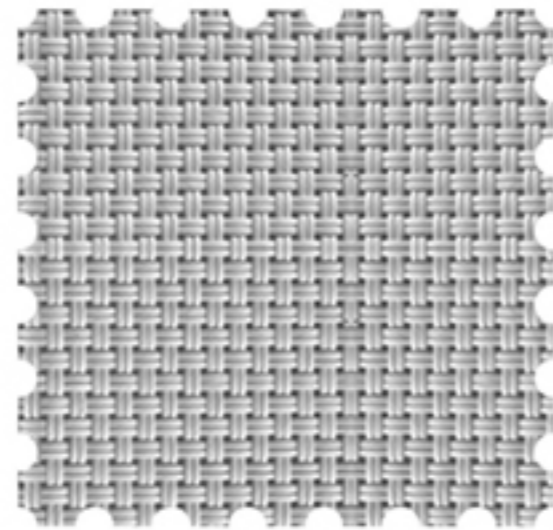
82006M



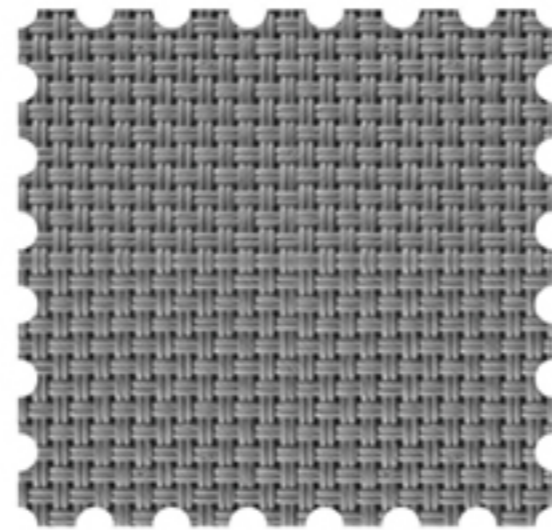
82006N



82006O



82006Q



82006R



Number	Composition	Max Width	Thickness	Weight
82006	30% Polyester + 70% PVC	300 cm	0.75mm ± 5%	520g/m ² ± 5%

5%
openness factor