

# **MOTORIZED SHADES INSTALLATION MANUAL**



# Contents

Product view .....	4
Tools needed .....	4
Installation by steps .....	5-6
Motor and remote .....	7-8
Programming .....	9-11
FAQ .....	12

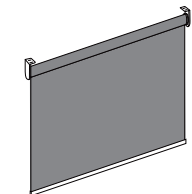
Thank you very much for choosing our motorized shades. Before installing the shades, please read through this manual carefully.

This manual is applicable to the electric roller shades with standard roll, electric roller shades with valance and electric zebra blinds.

Should you have any doubts during the installation or your daily use, please contact us and our professional customer service team is standing by to support.

## Product view

### Shades with standard roll

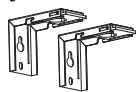
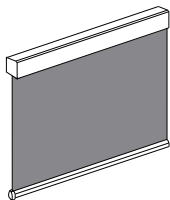


brackets



screws

### Shades with valance



brackets



screws

## Tools needed



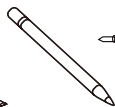
screw driver



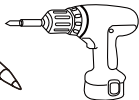
level vials



tape measure



pencil

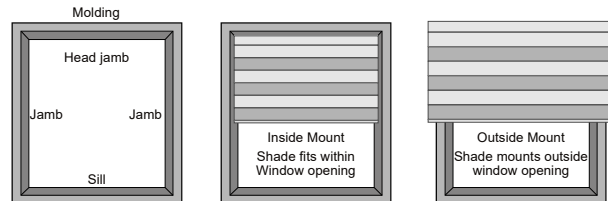


power drill

## Installation by steps

### Step 1 Install the brackets

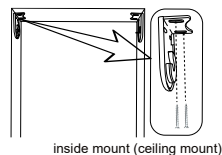
If the brackets are mounted correctly, the rest of the installation process will follow easily. To prepare for this important first step, review the mounting types and basic window terminologies illustrated below.



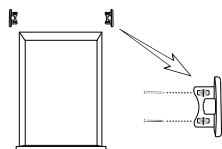
### Warning

Use the level Vial to check if the surface where the brackets will be installed is horizontal. Fill the gap between the wall and the brackets if necessary. (washers are not provided).

### Shades with standard roll

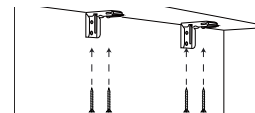


inside mount (ceiling mount)

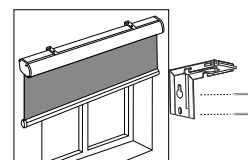


outside mount (wall mount)

### Shades with valance



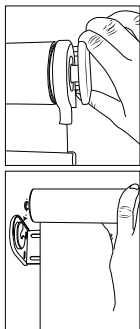
inside mount (ceiling mount)



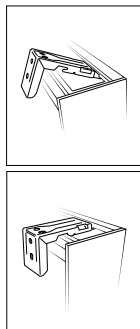
outside mount (wall mount)

## Step 2 Install the Shades

### Shades with standard roll

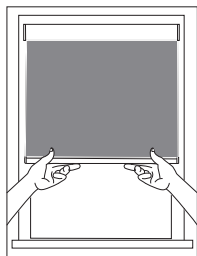


### Shades with valance

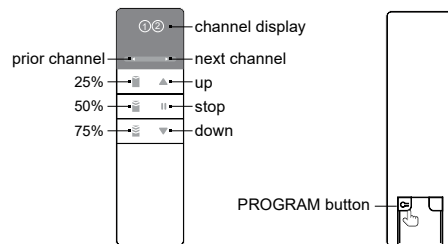


## Step 3 Installation check

- Check if the fabric is centered
- Make sure the shades is horizontal



## Basic functions of the motor and remote



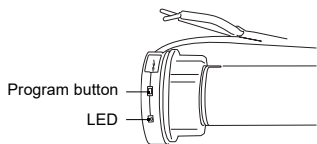
\* Open the back cover and load the cell button battery (CR2032) before use.

### Warning

Safety Instructions for Motorized Shades

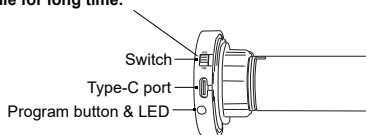
- Do not expose the motor or remote to moisture or extreme temperatures.
- Do not allow children to play with this device.

## AC power motor



Product model	A25~1.1/22E	Rated voltage	100~240VAC
Rated current	0.1A	Rated power	22W
Rated torque	1.1Nm	Rated speed	30rpm
Max limit	non-stop	Noise	<38dB

Switch on the motor for the first time use.  
Switch it off if leaving it idle for long time.



## Battery motor

Product model	L25~0.8/35E	Rated voltage	7.4VDC
Battery capacity	2200mAh	Rated power	10W
Rated torque	0.8Nm	Rated speed	30rpm
Max limit	non-stop	Noise	<38dB

### Warning

#### IMPORTANT

In some cases, at the customers' request, the Upper & Lower limit positions (full UP & DOWN positions) have been pre-set before shipping. – also, a Channel Number has been assigned to each shades - therefore, it is NOT necessary to perform Steps Pairing, Set the Upper limit & Set the Lower limit below – however, we recommend that you read these to familiarize yourself with the basics of programming the motor and remote control and to fully understand the function of your motorized shades.

### Pairing :

- Press the motor PROGRAM button till the shades jogs and the LED turns ON, this puts the motor in program mode.
- Select the channel for the shades, press the remote PROGRAM button on the back of the remote (see drawing) – the shades jogs again.
- Press the motor program button – the shades jogs again (please do this before the LED goes OFF).

The motor and remote are now paired.



### Set the Upper limit:

- Press the remote PROGRAM button on the back of the remote and the UP button at the same time till the motor jogs.
- Press the UP button and let the shades go to the desired UP position.
- Press the remote program button again – the motor will jog and the upper limit is now set.

### Warning

For shades with valance, setting the upper limits is extremely necessary to avoid the lower bar going over the top and damaging the valance brackets.

## Set the lower limit:

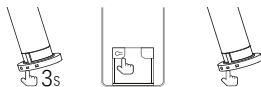
- Press the remote PROGRAM button on the back of the remote and the DOWN button at the same time till the motor jogs.
- Press the DOWN button and let the shades go to the desired DOWN position.
- Press the remote program button again – the motor will jog and the lower limit is now set.



## Controlling multiple shades simultaneously

- Please make sure each shades has been set the Upper and Lower limits.
- Select a channel that you would like to control all the shades ( a spare channel is recommended).
- Press the motor PROGRAM button till the motor jogs, and press the REMOTE program button , motor jogs.

- Press the motor program button, motor jogs again.now the shades has been assigned to the selected channel. Simply choose the same channel and repeat the operations above. In this way, all shades are assinged to the same channel and can be controlled in a synchronized way.

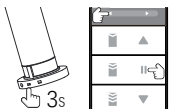


## Switching Direction(For standard roll only)

The shades will move in the opposite direction due to improper operation or the motor is moved to the other end.To change the shades to the right direction, please follow the steps below.

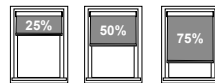
1. Lower the shades till the tube (in the valance) is visible.
2. Press the motor PROGRAM button for 3 seconds till the motor jogs.

3. Press the channel selection button and STOP button at the same time till the shades jogs.now the shades will not move in the opposite direction.



## Convenient touch

You can easily control your shades move to certain position by following the steps below:



Press 25% button till the shades moves, and release your hand, the shades will move to 25% of the programed limit. 50% and 75% button works with the same step.

Note-This works only after the Upper and Lower limits are set.

## Deleting memory

Press the remote PROGRAM button and the STOP button at the same time for 4 seconds, motor will jog.

All memory for the limits setting is now erased.



## Motor reset

1. Press the motor PROGRAM button for 3 seconds till the motor jogs.
2. Release and then press the motor PROGRAM button for 10 seconds till the motor jogs. Now the motor has been reset to factory setting.

## Unload the blind with valance

Hold the valance tight, and then push the valance forward to release the shades from the brackets and lower the valance and take the shades off from the brackets.



## Cleaning

Always clean with a low suction, hand-held vacuum or dust with a soft, clean cloth or feather duster. For dirt and stains, we suggest use a cloth, sponge or soft brush and a mild detergent.

## Q&A

**Q : What's the difference between 2-channel remote and 6-channel remote?**

A : 2-channel remote can control 2 blinds independently while

---

**Q : How do I know when I shall charge the motor?  
(for rechargeable battery motor)**

A : When the motor battery is low, the LED on the motor blinks. Please charge it before the battery is fully drained away.

---

**Q : Why my blind doesn't respond to the remote anymore?**

A : 1. Please check if the battery inside the remote is low power. Change the battery and try again.

2. Please try to pair the motor with the remote again. (sometimes the pairing is lost due to some unknown RF interference)

---

**Q : Why I don't see the charging cable for each blinds?**

A : The charging cable can be shared among the blinds. By default, in the package, two blinds share one cable.

---

**Q : When I click the remote button, why does the blind move only a few centimeters?**

A : You need to first pre-set the upper and lower limits. After the setting, with only one click, it can go to 25%, 50%, 75% automatically. with a long press of 25% 50% 75% button.

---

**Q : Can I use the blinds outdoors?**

A : The motor is not water-proof. It's NOT suitable for outdoor use.



Please scan the QR code for video tutorials on Youtube