

Healthy Choice[®]

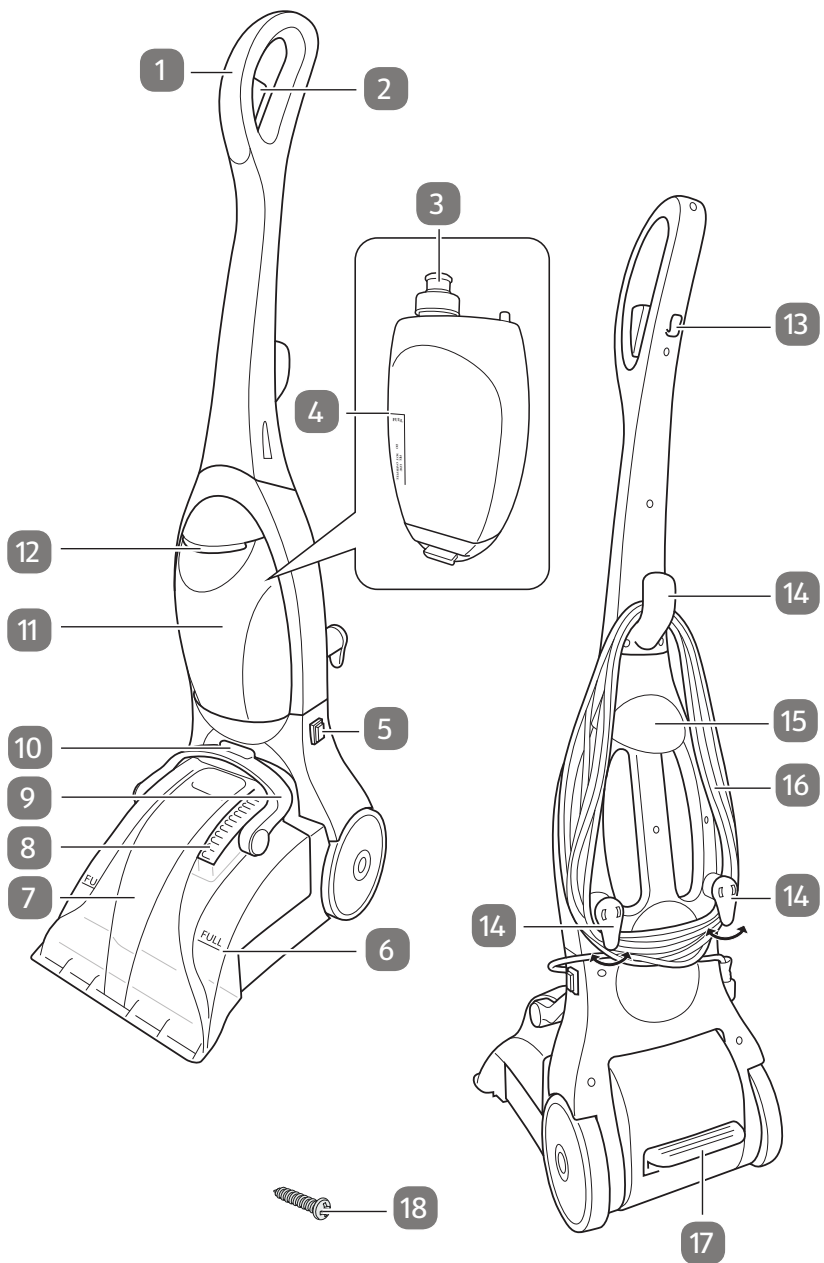
CARPET WASHER



Model: CW602 | Batch: PR4745

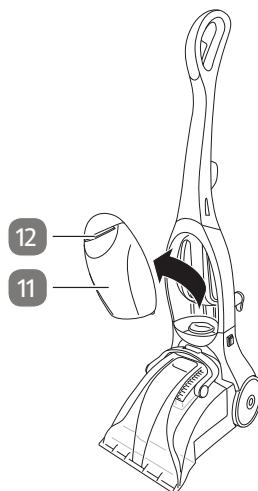
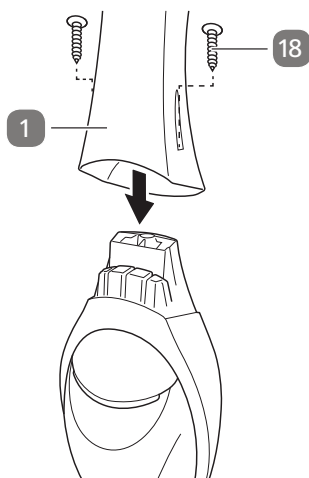
HOUSEHOLD USE ONLY

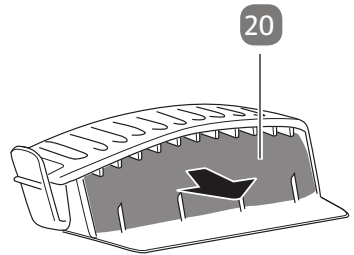
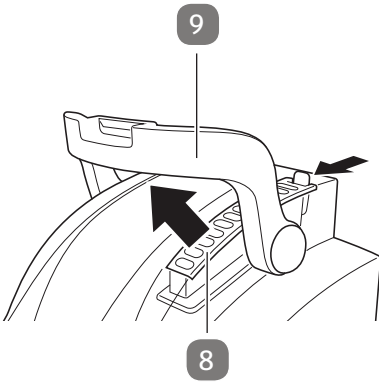
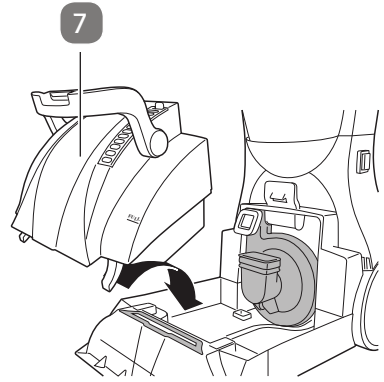
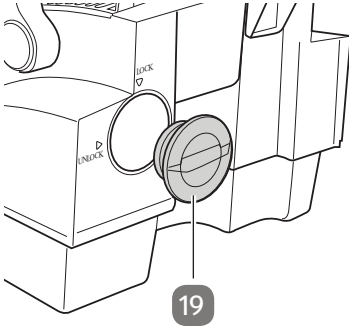
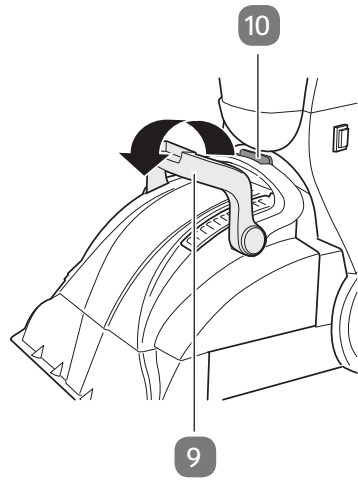
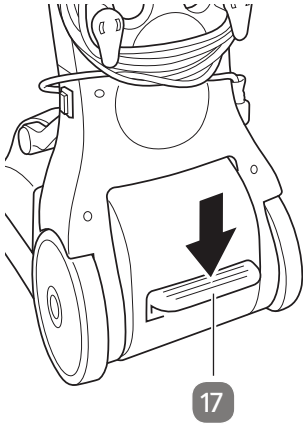
Carefully read all instructions before use and save for future reference.

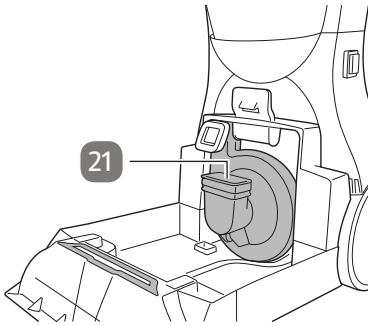


COMPONENTS

1. Handle
2. Solution release trigger
3. Water solution tank cap
4. Maximum filling line
5. On/Off switch
6. Full line
7. Dirty water tank
8. Exhaust filter housing
9. Dirty water tank handle
10. Dirty water tank locking latch
11. Water solution tank
12. Water solution tank release lever
13. Cord clip
14. Cord hooks
15. Carrying handle
16. Cord
17. Handle release pedal
18. Screw x2







- 19. Dirty water tank cap
- 20. Filter
- 21. Motor filter

IMPORTANT SAFEGUARDS

PLEASE READ AND SAVE THIS INSTRUCTION MANUAL
FOR FUTURE REFERENCE

When using the appliance, basic safety precautions should be followed, including:

1. Read all instructions.
2. This product is designed for cleaning carpets and rugs. It is only intended for private use and not suitable for commercial purposes.
3. Only use the product as described in this user manual. Any other use is considered improper and may result in damage to property or persons.
4. The manufacturer or vendor cannot be held liable for damages or injury incurred through improper or incorrect use.
5. **WARNING!** Risk of electric shock! A faulty electrical installation, excessive line voltage, or incorrect operation may result in an electric shock. Only connect the product if the line voltage of the socket corresponds to the data on the rating plate. Only connect the product to an easily accessible socket so that you can quickly disconnect it from the mains supply in the event of a problem.

6. Do not use the product if it is damaged or if the mains cord or plug is defective. If the mains cord is damaged, it must be replaced by the manufacturer, its service agent or similarly qualified persons in order to avoid a hazard.
7. Do not open the housing; instead, have a qualified professional perform repairs.
8. Only parts that comply with the original device data may be used for repairs. This product contains electrical and mechanical parts which are essential for providing protection against sources of danger.
9. Do not use the product with an external timer or separate remote control system.
10. Do not immerse the product or the cord in water or other liquids.
11. Never touch the mains plug with wet or damp hands.
12. Do not pull the mains plug out of the socket by the cord; instead, always pull it out by the plug itself.
13. Never move, pull, or carry the product by its cord.
14. Keep the product and mains cord away from open flames and hot surfaces.
15. Lay the mains cord so that it does not pose a tripping hazard.
16. Do not kink the mains cord and do not lay it over sharp edges.
17. Only use the product indoors. Do not use the product in damp rooms or in the rain.
18. Never reach to retrieve an electrical device if it has fallen into water. In such a case, immediately disconnect the mains plug.
19. Never insert any objects into the housing.
20. Always switch the product off and unplug it when you are not using it, when you intend to clean it, or in the event of a malfunction.
21. This product is not intended for use by persons (including children) with reduced physical, sensory or mental capabilities, or lack of experience and knowledge, unless they have been given supervision or instruction concerning the use of the product by a person responsible for their safety.
22. Children should be supervised to ensure that they do not play with the product.

23. Cleaning and user maintenance should not be made by children without supervision.

24. Keep children away from the product and mains cord.

25. Do not leave the product unattended while in use.

26. Improper handling of the product may result in damage to the product.

- Never expose the product to high temperatures (heaters etc.) or to the effects of the weather (rain etc.).

- Stop using the product if any of the parts are cracked, broken, or deformed. Only replace damaged parts with corresponding original spare parts.

27. Do not use the product to suck up any liquid other than the cleaning solution dispensed from it.

- Do not use the product to suck up wet or damp materials such as mud, tile grout, plaster filler, or caulking.

- Do not use the product without the tanks in place.

- Make sure all openings and outlets are free and clear of any blockage that may reduce airflow.

- Keep hair, loose clothing, fingers and other body parts away from the openings and moving parts.

- Do not use the product to suck up flammable or toxic liquids such as petrol, chlorine bleach or drain cleaner, or use it in areas where they may be present.

- Do not suck up anything that is burning or smoking, such as cigarettes, matches, or hot ashes.

ASSEMBLY

Improper handling of the product may cause injury.
Do not connect the product to a mains socket until it is fully assembled. Do not operate the product without the handle being firmly screwed into place.

1. Set the product in an upright position.
2. Place the handle **1** firmly onto the main body of the product. Make sure that the cord clip **13** is on the same side as the cord hooks **14**.
3. Using a crosshead screwdriver, drive one screw **18** into each side of the handle and fasten them securely. Do not overtighten the screws, as this could strip the screw holes.

CARPET PREPARATION

Risk of damage! Using the product as a dry vacuum will damage it. Only use the product with an appropriate carpet cleaning solution.

1. Remove as much furniture from the room as possible. Place a plastic or other protective covering under and around any furniture left in the room.
2. Thoroughly vacuum the carpet to be cleaned with a regular vacuum cleaner.
3. Test: Dampen a white cloth with the carpet cleaning solution you are going to use with the product. Rub the cloth gently over a small test area on the carpet and check for any colour bleeding. If the cloth remains clean, it should be safe to clean the carpet.

OPERATION

FILLING THE WATER SOLUTION TANK

Risk of injury! Improper handling of the product may cause injury. Always unplug the product before filling the water solution tank. Avoid prolonged skin contact with cleaning solutions. Keep carpet cleaning solution out of the reach of children. In case of contact with eyes, rinse immediately with plenty of water and seek medical advice.

Risk of damage! Using the product without the water solution tank in place or with a wrong solution may damage the product. Always make sure that the water solution tank is properly in place before using the product. Do not use any solvents, cleaners with strong acidic or strong alkali formulas, or any type of cleaning solution not specifically for use in carpet cleaning machines.

- Only use suitable (low-foaming) carpet cleaning solution. Using incorrect solutions may cause excess foaming, which will prevent the product from working effectively.
- Carpet cleaning solution is NOT included. Most commercially available low foaming carpet cleaning solutions may be used. Always read the manufacturer's instructions before use.

1. Unplug the product.
2. Lift up the water solution tank release lever **12** and then remove the water solution tank **11** from the product.
3. Unscrew and then remove the water solution tank cap **3** from the water solution tank.
4. Following the instructions on the bottle, add the cleaning solution and then fill the water solution tank with warm tap water (max. 40°C). Do not fill over the maximum filling line (FULL) **4**.

5. Replace the water solution tank cap.

6. Place the water solution tank back into position by pushing it down until it clicks into place.

Repeat the steps above (except step 4) to empty the water solution tank after use and before storage.

CLEANING A CARPET

Before cleaning, determine where to start and stop, making sure you will not walk over previously cleaned areas.

- Do not oversaturate the carpet with cleaning solution.
- For heavily soiled areas, additional applications may be necessary.

1. Plug the mains cord **16** into a mains socket and turn the product on by setting the on/off switch **5** to the ON position.

2. Step on the handle release pedal **17** to lower the handle **1** into the cleaning position.

3. While pressing the solution release trigger **2**, pull the product in a backwards direction towards you.

4. Release the solution release trigger and push the product forwards in the same path to remove the dirty cleaning solution from the carpet.

5. Repeat steps 3–4 to clean other parts of the carpet or heavily soiled areas.

6. When cleaning is done, turn the product off by setting the on/off switch to the OFF position.

7. Push the handle forwards until it is positioned upright and locked into place.

8. Unplug the product and wrap the mains cord around the cord hooks.

TIPS FOR CARPET CLEANING

- Use the carrying handle **15** to lift up the product and move it to the desired cleaning location.
- Do not run the product over the mains cord **16** by holding any excess cord in your free hand while cleaning.
- Use a steady, moderate, forwards and backwards motion. Always work from back to front across a room to avoid stepping on wet carpet.
- Do not make the carpet too wet. Use no more than two sets of forwards and backwards strokes while releasing carpet cleaning solution. Always follow with dry strokes; the more dry strokes the better.
- Wipe any cleaning solution from woodwork and furniture to prevent any damage.
- Allow plenty of time for the carpet to dry and avoid walking on it until it is dry. Increased air circulation (open doors, fans, etc.) or the use of a dehumidifier will help the carpet dry thoroughly and prevent the growth of mold or mildew.
- Vacuum the carpet thoroughly before cleaning it and after it has dried.

EMPTYING THE DIRTY WATER TANK

Risk of injury! Improper handling of the product may cause injury. Always unplug the product before emptying the dirty water tank.

An automatic shut-off device prevents the product from picking up more dirty water than the dirty water tank can hold. You will know the dirty water tank needs to be emptied when:

- the motor sound rises in pitch,
- the dirty solution has reached the FULL line **6** in the dirty water tank.

1. Unplug the product.

2. Unlock the dirty water tank **7** by pressing the dirty water tank locking latch **10** and lifting up the dirty water tank handle **9** at the same time. Remove the dirty water tank from the product.

3. Open the dirty water tank cap **19** by turning it anticlockwise, so the grip points to the word "unlock".

4. Empty the dirty water tank, replace the dirty water tank cap and turn it to the “lock” position. Then place the dirty water tank back into the product.

5. Push the dirty water tank handle down until the dirty water tank locking latch clicks into place.

CLEANING AND MAINTENANCE

Risk of injury! Improper handling of the product may cause injury. Always unplug the product when not in use, refilling the tanks, cleaning it, or performing maintenance.

Risk of damage! Improper handling of the product may result in damage. Do not use any aggressive cleaners, brushes with metal or nylon bristles, or sharp or metallic cleaning utensils such as knives, hard scrapers and the like. They could damage the surfaces. Never immerse the motor unit in water or any other liquids and do not rinse it under the tap or with a hose.

CLEANING THE FILTERS

Risk of damage! Improper handling of the product may result in damage. Do not clean the filters with any chemicals as this will destroy them.

1. Remove the dirty water tank **7** as described in the section “Emptying the dirty water tank”.

2. Remove the exhaust filter housing **8** from the dirty water tank.

3. Pull out the filter **20** from the exhaust filter housing.

4. Rinse the filter with warm water (max. 40°C). Allow the filter to dry thoroughly.

5. Replace the filter and put the exhaust filter housing back into the dirty water tank.
6. With the dirty water tank still removed, pull out the motor filter **21**.
7. Rinse the motor filter with warm water. Allow the motor filter to dry thoroughly.
8. Replace the motor filter and put the dirty water tank back into the product as described in the section “Emptying the dirty water tank”.

CLEANING THE PRODUCT

1. Unplug the product.
2. Make sure the water solution tank **11** and the dirty water tank **7** are empty (see sections “Filling the water solution tank” and “Emptying the dirty water tank”).
3. Use a soft damp cloth to wipe off the product and accessories. Then let all parts dry completely.

STORAGE

Risk of damage! Mineral deposits and mildew can form when cleaning solution and/or water is left in the tanks, affecting the performance of the product.

Do not store the product with cleaning solution left in the water solution tank or dirty water left in the dirty water tank.

All parts must be completely dry before being stored.

- Always store the product in a dry area.
- Protect the product from direct sunlight.
- Store the product so that it is not accessible to children.

Technical Parameters

Product Name	Carpet Washer
Model No.	CW602
Rated Voltage	220V-240V~
Rated Frequency	50Hz/60Hz
Power	600W
Water solution tank capacity	1.3L to FULL line (max 2.3L)
Dirty water tank capacity	1.7L to FULL line (max 2.5L)

TROUBLESHOOTING

Some problems may be caused by minor faults that you can fix yourself. To do so, follow the instructions in the following table. If it is still not possible to resolve the problem, contact customer service. Do not repair the product yourself.

Problem	Solution
The product will not operate.	<ul style="list-style-type: none">- Make sure the product is plugged in.- Make sure that the main socket is not defective.
Not enough suction during cleaning.	<ul style="list-style-type: none">- Empty the dirty water tank 7; it may be full and the automatic shut-off engaged.- Make sure the dirty water tank is properly installed.
Cleaning solution will not dispense.	<ul style="list-style-type: none">- Make sure the water solution tank 11 is fully inserted and securely in place.- Refill the water tank if it is empty.

LENOXX®

www.lenoxx.com.au



1300 666 848



LenoxxElectronics



LenoxxElectronics



@LenoxxAustralia