



AGES 3+

ELECTRONIC KEYBOARD

Instruction Manual



Model: 2038 & 2039 | Batch: PR4684

Carefully read all instructions before use and save for future reference.

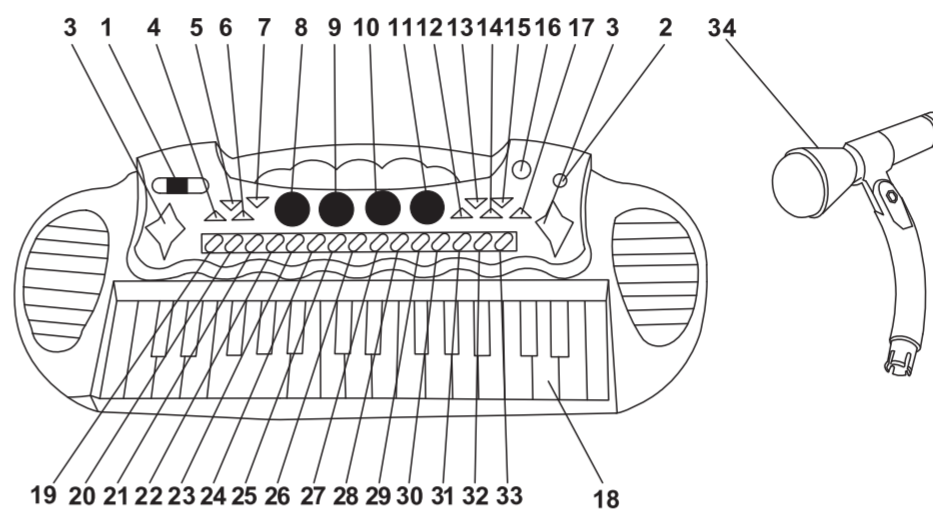
www.lenoxx.com.au

LENOXX

1300 666 848

FUNCTIONS INTRODUCTION

- 31 piano keys
- Detachable microphone
- 8 instruments
- 7 beats
- 4 drum types
- Adjustable volume and tempo
- Different modes of flashing lights
- Record & playback functions
- 22 demo songs



- | | | | |
|------------------------|-----------------|---------------|----------------|
| 1. Toggle switch | 10. Snare drum | 19. Violin | 28. Samba |
| 2. Microphone jack | 11. Bass drum | 20. Bell | 29. Rock |
| 3. Flashing light | 12. Drum change | 21. Mandolin | 30. Disco |
| 4. Tempo + (speed up) | 13. Record | 22. Organ | 31. March |
| 5. Tempo - (slow down) | 14. Demo | 23. Trumpet | 32. 16 Beat |
| 6. Volume up | 15. Play | 24. Guitar | 33. Twist |
| 7. Volume down | 16. Mic jack | 25. Piano | 34. Microphone |
| 8. Hi-hat cymbal | 17. Stop | 26. Music box | |
| 9. Cymbals | 18. Key | 27. Waltz | |

HOW TO USE?

Play the keyboard:

Toggle the switch to ON. A short melody will sound to let you know the keyboard is ready to play. Press any piano key to start playing.

Play demo songs:

Press the DEMO button (14). 22 built-in songs will start playing. Press again to skip to the next song. Press the STOP button to stop playing.

Choose the tone:

The default setting is the piano tone. To change to one of the other 7 tones, select the tone using buttons 19 – 26.

Record and playback:

Press REC (13). The keyboard will record the music you are playing. Press PLAY (15) and the keyboard will play your recording back. Press STOP to exit this function.

Microphone:

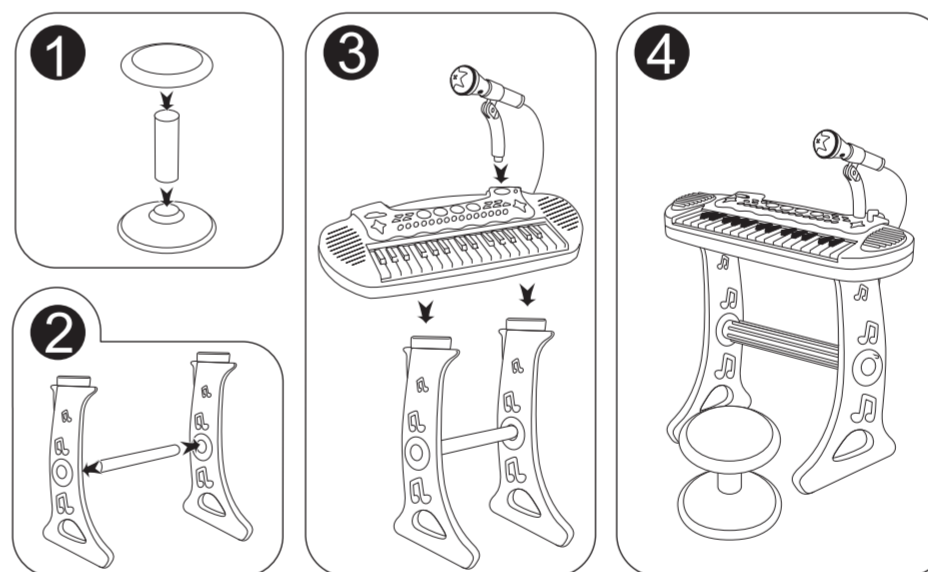
Plug in the microphone and toggle the switch ON. Your child can sing to the microphone while they are playing music on the keyboard.

Standby Mode:

If you don't press any keys for 3 minutes when the keyboard is powered on, it will play a short tune and automatically switch into standby mode. You can press any key to turn it back on.

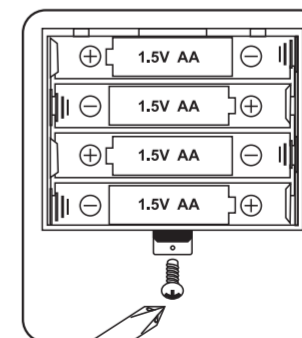
This toy is intended to be assembled by an adult.

ASSEMBLY INSTRUCTION



BATTERY INSTALLATION

The keyboard is powered by 4 x 1.5V AA batteries. To install batteries, turn the keyboard over and open the battery cover using a screwdriver. Place 4 batteries, making sure they are matching the + & - correctly, and close the cover.



Note:

1. Place the batteries in the correct way, as pictured on the diagram. Make sure they're not loose.
2. Don't use different types of batteries at the same time or use a mix of new and old ones.
3. Secure the battery cover with the screw, don't let children play with batteries.
4. If the toy is not being used for an extended period, please remove the batteries.