



ATLAS4 CAR BOOT HOIST GUIDE

The Atlas4 hoist is designed to fit a range of cars and has a lifting capacity of up to 40kg and under no circumstances should the hoist system be made to exceed this weight limit. Subjecting the lift system to the strain of lifting more than it is designed to may cause it to fail.

This guide is designed to provide advice for selecting the correct vehicle, wheelchair and scooter, assembly and fitting.

The Atlas4 is portable and easy to assemble which allow the user to take the Atlas4 away on holiday or use in multiple of cars.



A black Atlas4 hoist with a hook hanging from it. The hoist has a horizontal boom and a vertical post. The brand name 'ATLAS4' is visible on the boom.

ATLAS4 HOIST

- Maximum load capacity 40kg
- Automatic Up and Down
- Swinging boom
- Folding and removable boom
- Hoist can either be fixed or removed
- Multiple power options
- Remote Control option
- Parcel Shelf can be used
- Easy Vehicle transfer

KEY SAFETY POINTS

- **WARNING!** The Atlas4 must never be operated by a child or any person not deemed appropriate to operate the equipment.
- **WARNING!** The Atlas4 should always be fully secured before operating.
- **WARNING!** Never use a system that shows signs of damage.
- **WARNING!** Do not exceed maximum loading capacity.
- **WARNING!** Misuse of the Atlas4 may result in serious injury.

COMPONENT DESCRIPTION



BOOM ARM



HEIGHT LOCATING SLOTS



SECURING BAR



SUPPORTING BAR



RATCHET &
RATCHET LEVER



RELEASE &
SECURING CATCH



BOOM BASE



BOLTS & ALLEN
KEY



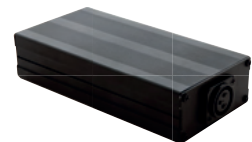
LIFTING STRAP &
HOOK



UP & DOWN
BUTTON



POWER CABLE



PORTABLE POWER PACK
ADDITIONAL EXTRA

ASSEMBLY

Lay all parts on the floor



Connect the Supporting bar
to the Securing bar

Place the boom base on top of the
securing bar ensuring that the bolt
holes are in line



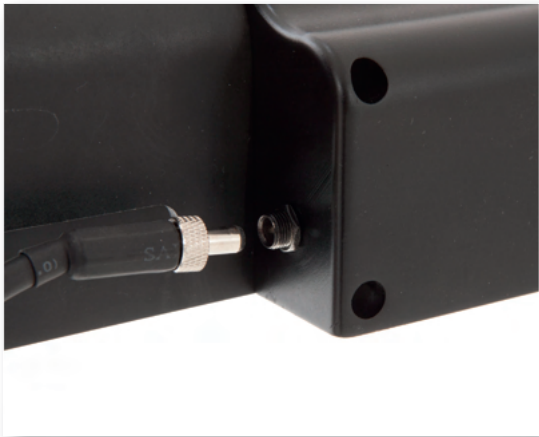
Using the 4 bolts supplied secure
the boom base to the securing bar with
the supplied Allen key

FITTING



- Place the frame into the boot with the boom base situated to the left of the boot lip and the Supporting bar is running left to right alongside the inside of the boot lip

- Using the ratchet lever, ratchet the hoist frame against the rear seat and boot lip until the frame is fully secured.
- Insert the boom arm into the boom base ensure that the securing catch is lifted, then released once the boom arm is secured firmly.



- Connect and secure power cable to the boom

- See Operation instructions

OPERATION

1. Swing the boom arm outwards to its outmost position.
2. Ensure the scooter is positioned in the correct position for lifting.
3. Press & hold the down button to lower the hoist
4. Connect the lifting hook securely to the scooter.
5. Press and hold the up button to raise the scooter above the boot lid, steadying the scooter to ensure it does not contact the vehicle.
6. Carefully swing the boom inwards into the boot.
7. Press & hold the down button to lower the hoist until the scooter is firmly placed on the vehicle floor.
8. Remove lifting hook from the scooter.
9. Press and hold the up button to retract the hoist lifting strap and hook.
10. Disconnect the power supply.
11. Lower the boom arm and remove from the boom base by lifting on the release and secure catch.
12. Stow away the boom arm securely and close the boot.

TROUBLESHOOTING

No power

Check that the power cable is securely connect to both the hoist and power supply.

Stops during lifting

Is the scooter caught on the vehicle?

Hoist is lifting very slow

Is the scooter too heavy for the hoist?
Is the power supply charged sufficiently?

