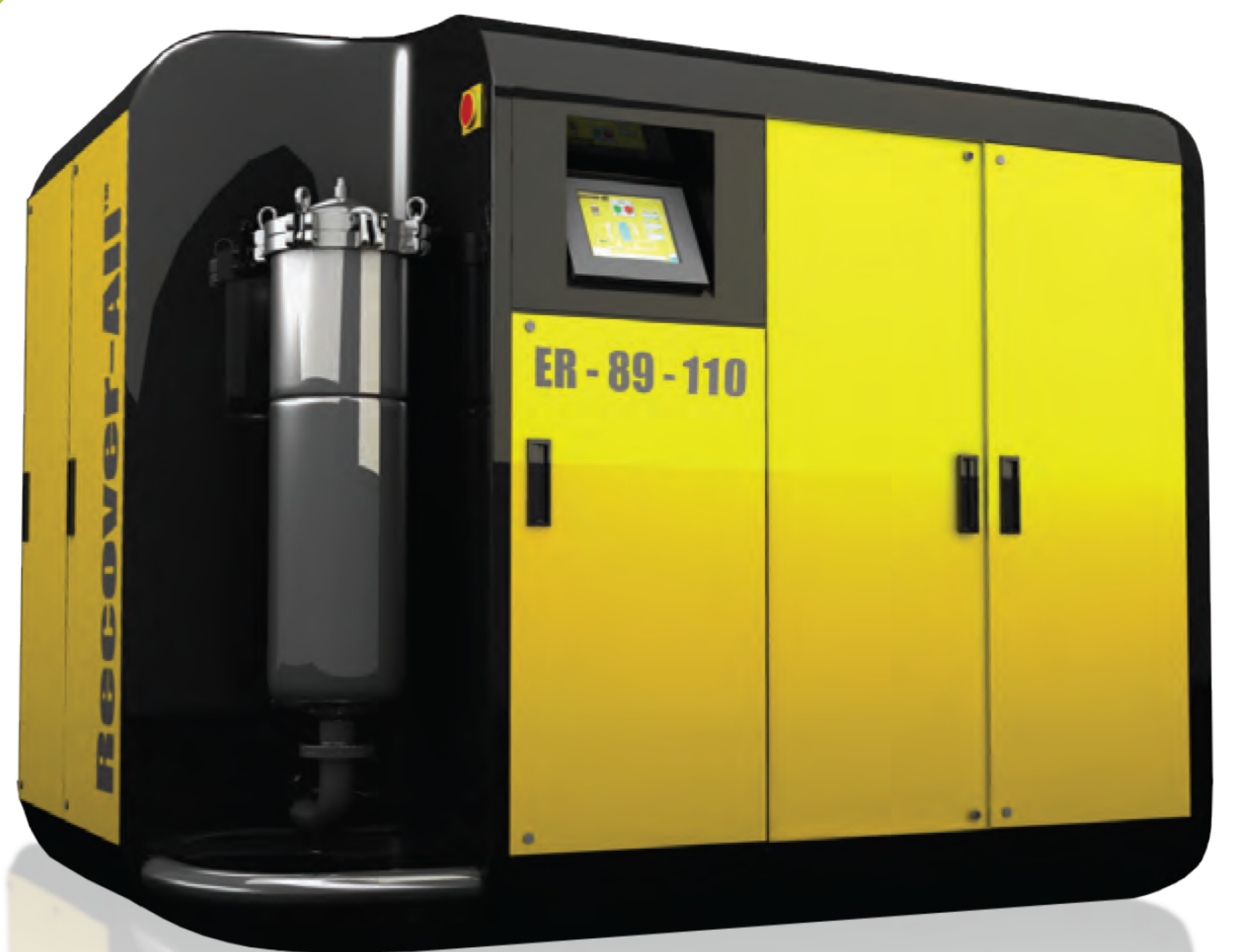




Recover-All™

OIL/WATER FILTRATION, SEPARATION
& TREATMENT SYSTEM



RECOVER-ALL™ : OIL/WATER FILTRATION, SEPARATION & TREATMENT SYSTEM

Regulations concerning what is going down the drain are getting tougher and stricter. Recover-All™ has all the means to help you maintain and stay ahead of any criteria* by treating wastewater and/or process water into a clean reusable or drainable effluent.

Recover-All™ is a compact treatment system used in many industries for filtering and removing sediments, separating oil from water and treating the water to regulated discharge levels before sending it to the drain.

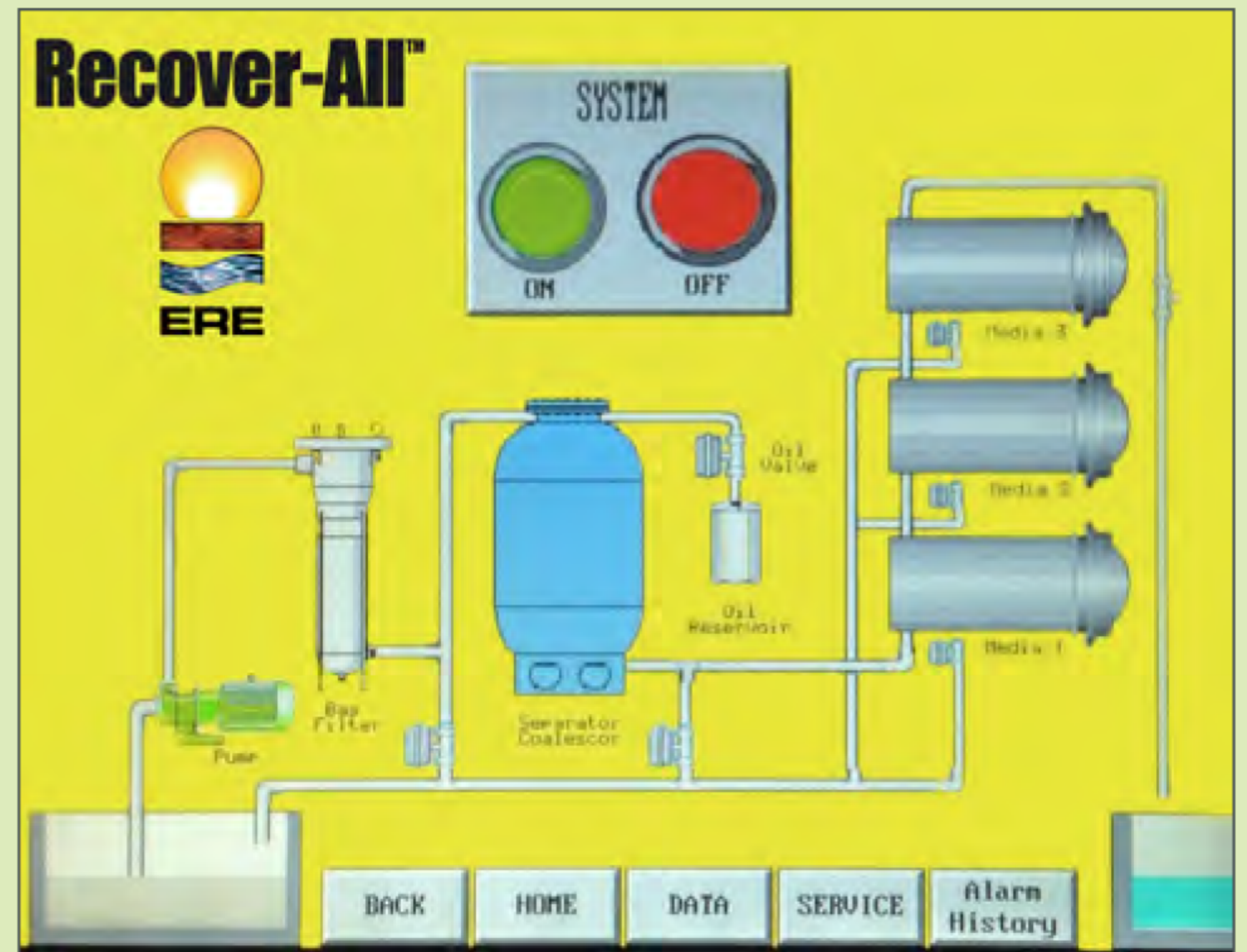
Recover-All™ is a standardized system designed as the perfect solution that will bring you peace of mind and make scheduled heavy maintenance a thing of the past. Recover-All™ is your solution with its award winning and ergonomic design. Fully automated features make the Recover-All™ your forefront environmental solution provider.

OPERATION

Specifically designed to separate oil from water and to treat water from dissolved phase hydrocarbons and MOG. The unit will filter particulates down to 1µm** in size followed by an integrated Coalescing Pack to aid small micelles into bigger droplets of oil for further enhancement of separation.

The oil/water separator then follows to separate the lighter oils from water, two fluids with different specific gravities (≈1 for water; 0.85 à 0.95 for oils). Oil is continuously monitored and removed by a combination of sensors, which activates the oil out actuator valve and stores the oil in a container. Contaminated water will then proceed into a series of ERE's special high capacity mineral oil & grease removal and polishing media filter cartridges. Recover-All™ systems are designed to treat effluents down to 5 mg/L & less of MOG.

Recover-All™ is a complete compact-cabinet-mounted unit with level controls, pump and touch screen user-friendly human interface for continuous and automatic treatment process.



Recover-All 5 GPM Touch Screen Snapshot

COMES WITH:

- > Quite Positive Displacement Pump
- > Particulate Filter Housing with Gauge
- > Automatic Oil Out System
- > High Pressure Switch for Filter Bag
- > High Alarm Switch for the Oil Recovery Tank
- > UltraSorber Plus Cartridge Canisters Media (3)
- > Touch Screen Control Console
- > Intake Screen & Tubing with 25' Attachment Hose
- > Level Float for Feed Tank/Pit

CARTRIDGES AVAILABLE:

ER-89-000-001-04 : MAGNUM UltraSorber™ Cartridge Canisters

- > Contains: UltraSorber™ Media for Low to High Molecular Weight Contaminants and Color Removal
- > Weight: 30 lbs

ER-89-000-001-05 : MAGNUM UltraSorber Plus™ Cartridge Canisters

- > Contains: UltraSorber Plus™ Media for Dissolved MOG Removal
- > Weight: 50 lbs



APPLICATIONS

- > Oil/Water Separation
- > Industrial Waste Water
- > Food Waste Water
- > Fuel Depots
- > Compressor Condensate
- > Vehicule Service Centers
- > Equipment Wash Down
- > Car Washes
- > Remediation Sites
- > And Many More!

Model	ER-89-105	ER-89-110	ER-89-120
Flow Max	5 GPM	10 GPM	20 GPM
Filtration**	1 µm	1 µm	1 µm
Separator	30" x 48"	30" x 48"	36" x 48"
# of Cartridges (# of Housings)	6 (3)	12 (6)	24 (12)
Power***	120 V, 60 Hz		
Media Weight****	180 to 300 lbs	360 to 600 lbs	720 to 1200 lbs
Dimensions	68"L x 63"W x 68"H	90"L x 63"W x 68"H	134"L x 63"W x 68"H
Weight	1900 lbs	2300 lbs	3100 lbs

* Contaminant list: BTEX, PAH, HMA, oil and grease, TCE, EBD, THM, chlorine, chloramine, organic chemicals, pesticides, detergents, odors, etc.

** Filtration size depends on choice of filter bag

*** Other voltage and frequency available

**** Final weight depends on cartridge

Environmental Remediation Equipment inc.

T: 514.326.8852 F: 514.326.8961 sales@ereinc.com
8605, Champ d'Eau. Montréal, Qc. H1P 3B8

ereinc.com | Toll free 1-888-287-3732

