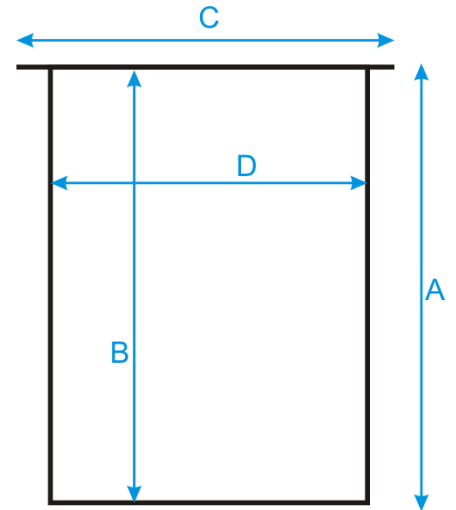


1. Part Number: A446-2

2. Photograph:



A = 175 mm
B = 170 mm
C = 160 mm
D = 130 mm

3. Product Information:

Description:	Mini-Drum 2L
Method of Construction:	Body welds ground and polished Patch plates for swing handle and lid handle are spot welded
Material of Construction:	316L Stainless Steel (body and lid)
Nominal Volume:	2L
Nominal Weight:	750g (body & lid)
Surface Finish:	Bright Polish (Ra < 0.5 microns)
Recommended Storage Conditions:	Dry and ambient temperature

4. Approval:

Signed:



Name: Kuldeep Flora
Position: Quality Manager
Date: 20-Nov-20